



Single Family



2450 SQFT



4 Beds



3 Baths



3 Car



0.28 Acre

PROPERTY DETAILS

This well maintained house backs to open space with views for days. Enter this much desired RANCH floorplan that is an open concept with vaulted ceilings in much of the home. A true 4bedroom home or use the first bedroom as an office/study as it currently is. Adorned with beautiful built-ins & French doors to the formal living room with lots of natural light. Real hardwood flooring is throughout main level except the bedrooms where nice carpeting awaits your toes on those chilly mornings. Both are in great condition. Don't miss the Plantation shutters that add a design element to the home. The family room features a gas fireplace that can be enjoyed from the dining, kitchen & the family room due to the open floorplan. The kitchen has a large eat-at island, which can seat guests or separate dining area as well. Enjoy matching GE appliances in the kitchen (all included). The primary bedroom is large with a vaulted ceiling. The ensuite bathroom is a 5-piece with access to the large Walk-in closet. The vanities are double but separated! The finished basement is done to the level of the main level. Another full bathroom & a large bedroom. Enjoy all the storage in the beautiful built-ins surrounding the closet. There is an ample sized linen closet in the bath as well as a good sized closet that houses the sump pump area. Even MORE storage is under the stairs. Storage abounds! You'll spend hours enjoying the outside. Professionally landscaped & low maintenance so you can just enjoy the



Gwen Hamm

720-530-5489

gwenhamm@kw.com

<https://gwenhamm.kw.com/>

Scan code
for more
property
details



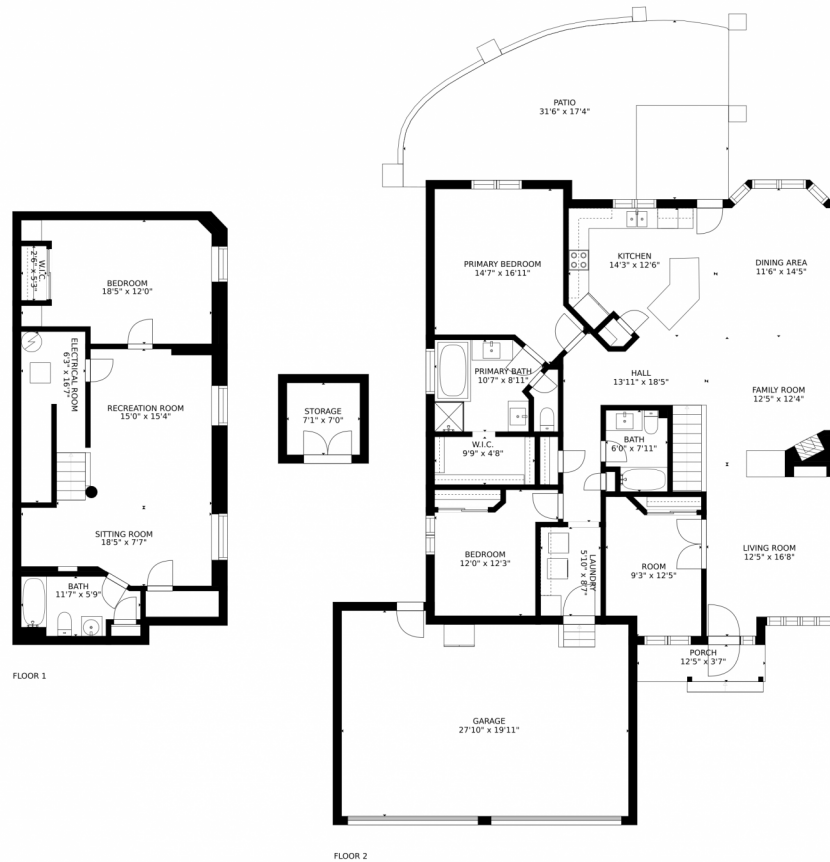
open space behind. Please note, only ONE adjoining neighbor here. The patio & curves are just calling for a BBQ gathering this summer. Welcome Home!



Gwen Hamm
720-530-5489
gwenhamm@kw.com
<https://gwenhamm.kw.com/>



1503 Rosedale Street, Castle Rock, CO 80104 – All Levels



Estimated areas

GLA FLOOR 1: 0 sq. ft, excluded 858 sq. ft
GLA FLOOR 2: 1732 sq. ft, excluded 1151 sq. ft
Total GLA 1732 sq. ft, total scanned area 3741 sq. ft

SIZES AND DIMENSIONS ARE APPROXIMATE, ACTUAL MAY VARY.

Disclaimer: Sizes and Dimensions are Approximate, Actual May Vary.



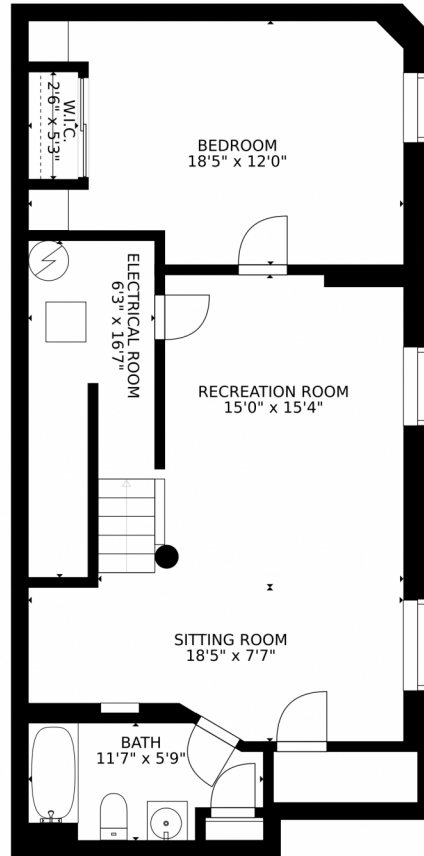
Gwen Hamm
720-530-5489
gwenhamm@kw.com
<https://gwenhamm.kw.com/>



Scan code
for more
property
details



1503 Rosedale Street, Castle Rock, CO 80104 – Lower Level



Estimated areas

GLA FLOOR 1: 0 sq. ft, excluded 858 sq. ft
GLA FLOOR 2: 1732 sq. ft, excluded 1151 sq. ft
Total GLA 1732 sq. ft, total scanned area 3741 sq. ft

SIZES AND DIMENSIONS ARE APPROXIMATE, ACTUAL MAY VARY.



Disclaimer: Sizes and Dimensions are Approximate, Actual May Vary.



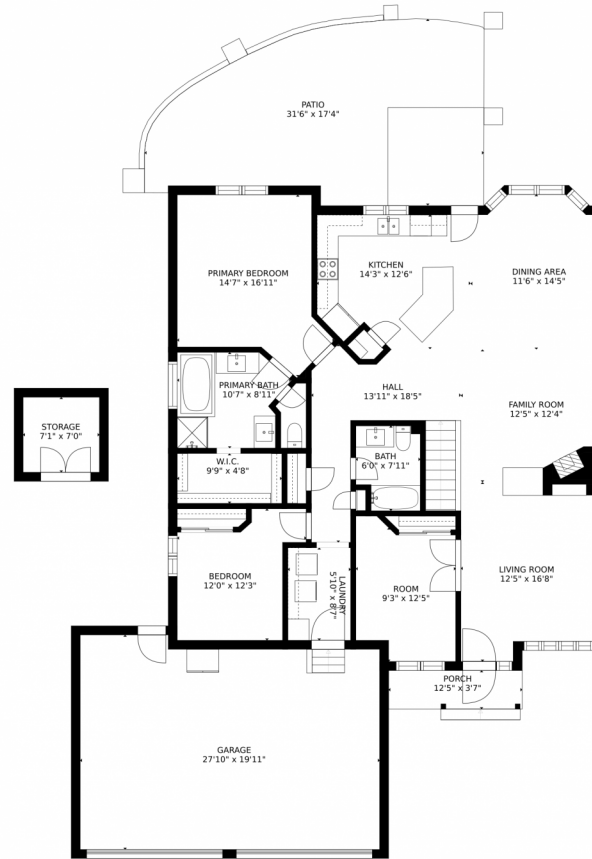
Gwen Hamm
720-530-5489
gwenhamm@kw.com
<https://gwenhamm.kw.com/>



Scan code
for more
property
details



1503 Rosedale Street, Castle Rock, CO 80104 – Main Level



Estimated areas

GLA FLOOR 1: 0 sq. ft, excluded 858 sq. ft
GLA FLOOR 2: 1732 sq. ft, excluded 1151 sq. ft
Total GLA 1732 sq. ft, total scanned area 3741 sq. ft

SIZES AND DIMENSIONS ARE APPROXIMATE, ACTUAL MAY VARY.



Disclaimer: Sizes and Dimensions are Approximate, Actual May Vary.



Gwen Hamm
720-530-5489
gwenhamm@kw.com
<https://gwenhamm.kw.com/>

