



7373 E Iowa Avenue
 Denver, CO 80231
 COMMUNITY: Indian Creek

MLS # 4322865
 PRICE \$400,000



Multi Family



1698 SQFT



2 Beds



2 Baths



1 Car



0.04 Acre

PROPERTY DETAILS

Welcome Home to the Landmark Townhomes of the Indian Creek community of Southeast Denver! This sparkling end unit has so many brand new updates, it will knock your socks off! Brand new water heater! Brand new wood look laminate flooring and carpet! Nearly all of the interior paint is also brand new! Many new lighting fixtures! Both bathrooms have been refreshed with brand new countertops and remastered cabinetry! The fully remastered kitchen is the heart of the home where you can enjoy passing down your favorite family recipes with all newly remastered brilliant cabinetry, new fixtures, and the cherry on top is all brand new stainless steel appliances. You will love the functionality of this phenomenal floor plan offering a sprawling main level comprised of the open concept living space flawlessly transitioning you from the living room into the dining space and kitchen. Quietly nestled in the corner of the main level is a rare first floor bedroom with the full bathroom adjacent making it easily accessible day or night. Next venture upstairs where the complete owner's suite awaits you. You're greeted to the upper level by a sunny and generously sized loft space offering endless possibilities, currently serving as a secondary lounge this space would also be wonderful for a home office. The primary bedroom and private full bathroom await featuring tons of space for many furniture design options along with the full bathroom complete with a dual sink vanity and so much storage



Tatyana Sturm
 720-350-5909
 tatyana@exitrealtydtc.com
 https://thestorckteam.com



Scan code
 for more
 property
 details



space including the large walk-in closet. As if it could get any better, this Denver beauty also offers a rare attached one car garage which is oversized for additional storage along with a nearly 500 square foot basement awaiting your finishing touch. The Indian Creek community is just off of Parker Rd connecting you to anywhere in the Denver Metro area making your commute a breeze along with the Highline Canal and Cherry Creek Trail literally in your "backyard". Don't wait, this will be gone fast!



Tatyana Sturm

720-350-5909

tatyana@exitrealtydtc.com

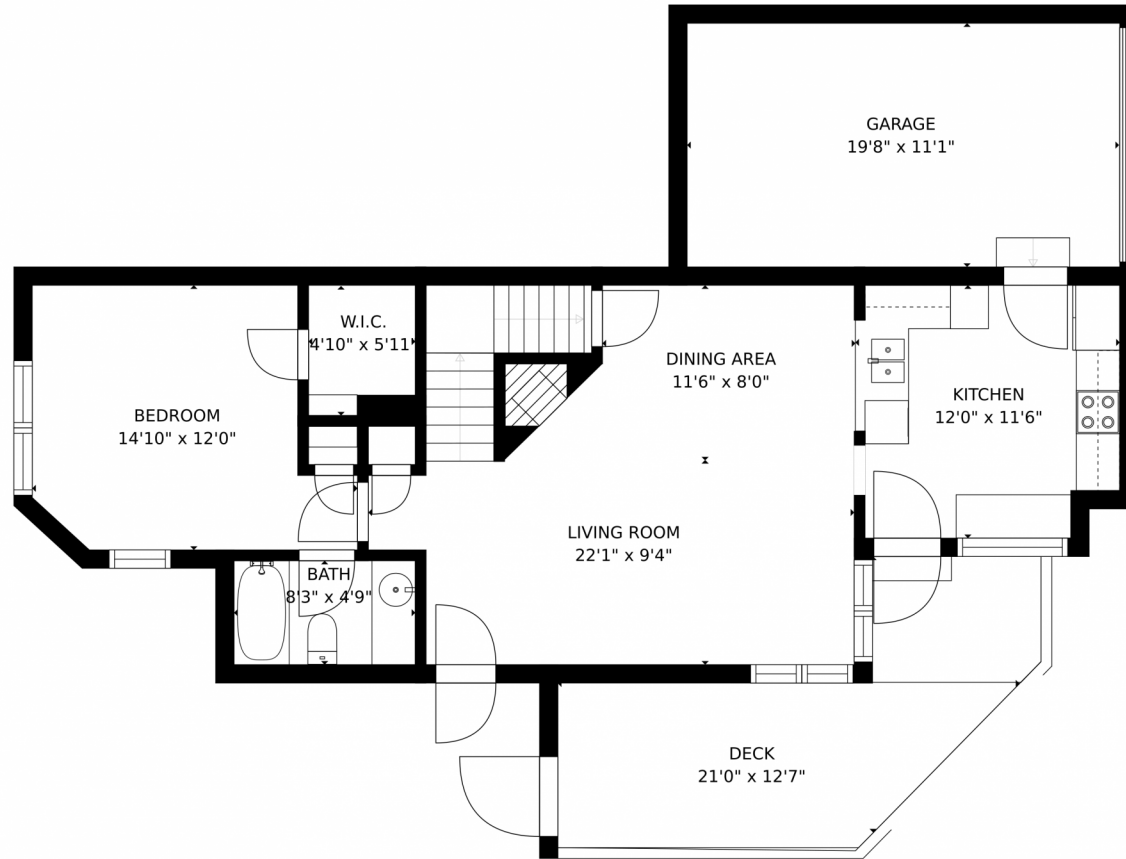
<https://thestorckteam.com>



Scan code
for more
property
details



7373 E Iowa Avenue, Denver, CO 80231 – Main Floor



Estimated areas

GLA FLOOR 1: 0 sq. ft, excluded 527 sq. ft.
GLA FLOOR 2: 841 sq. ft, excluded 428 sq. ft.
GLA FLOOR 3: 564 sq. ft, excluded 218 sq. ft.
Total GLA 1405 sq. ft, total scanned area 2578 sq. ft.

SIZES AND DIMENSIONS ARE APPROXIMATE, ACTUAL MAY VARY.



Disclaimer: Sizes and Dimensions are Approximate, Actual May Vary.

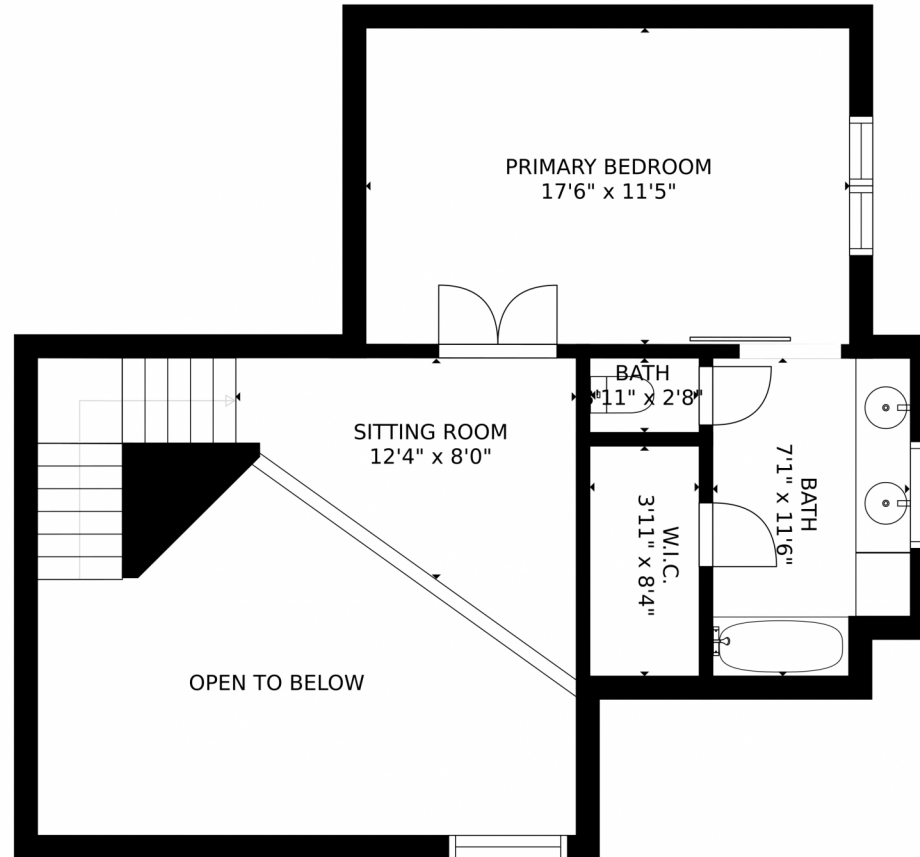


Tatyana Sturm
720-350-5909
tatyana@exitrealtydtc.com
<https://thestorckteam.com>



Scan code
for more
property
details





Estimated areas

GLA FLOOR 1: 0 sq. ft, excluded 527 sq. ft.
GLA FLOOR 2: 841 sq. ft, excluded 428 sq. ft.
GLA FLOOR 3: 564 sq. ft, excluded 218 sq. ft.
Total GLA 1405 sq. ft, total scanned area 2578 sq. ft.

SIZES AND DIMENSIONS ARE APPROXIMATE, ACTUAL MAY VARY.

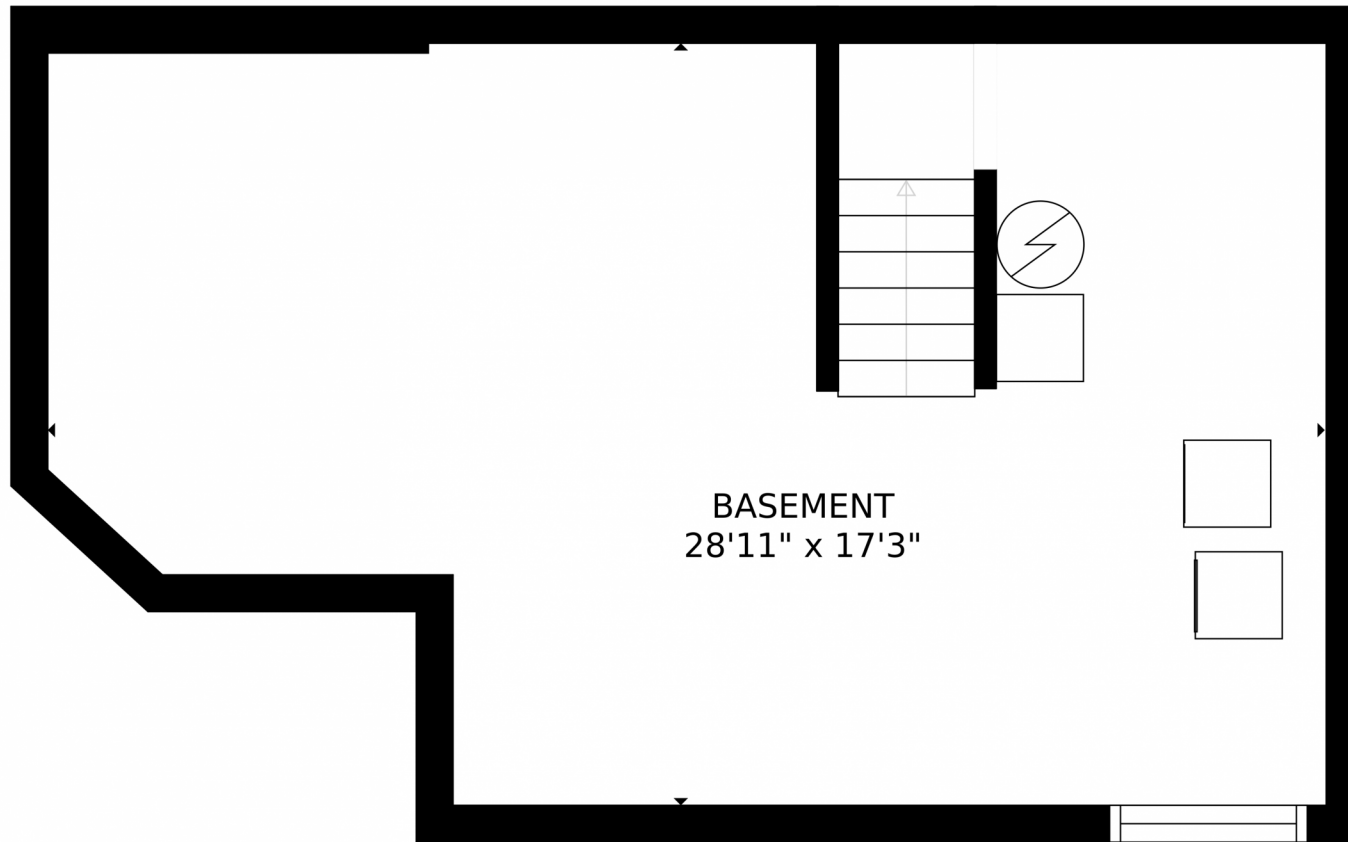


Disclaimer: Sizes and Dimensions are Approximate, Actual May Vary.



Tatyana Sturm
720-350-5909
tatyana@exitrealtydtc.com
<https://thestorckteam.com>





BASEMENT
28'11" x 17'3"

Estimated areas

GLA FLOOR 1: 0 sq. ft, excluded 527 sq. ft.
GLA FLOOR 2: 541 sq. ft, excluded 428 sq. ft.
GLA FLOOR 3: 564 sq. ft, excluded 218 sq. ft.
Total GLA 1405 sq. ft, total scanned area 2578 sq. ft.

SIZES AND DIMENSIONS ARE APPROXIMATE, ACTUAL MAY VARY.



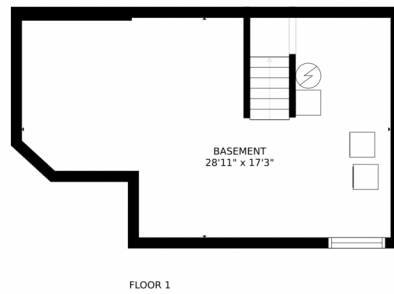
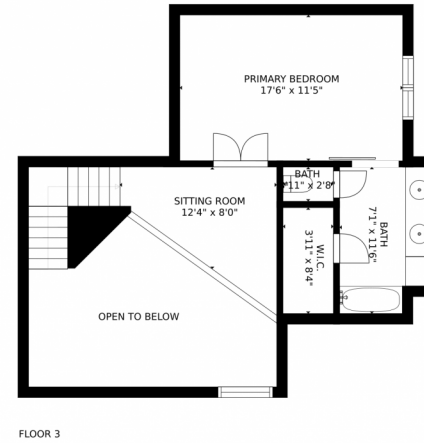
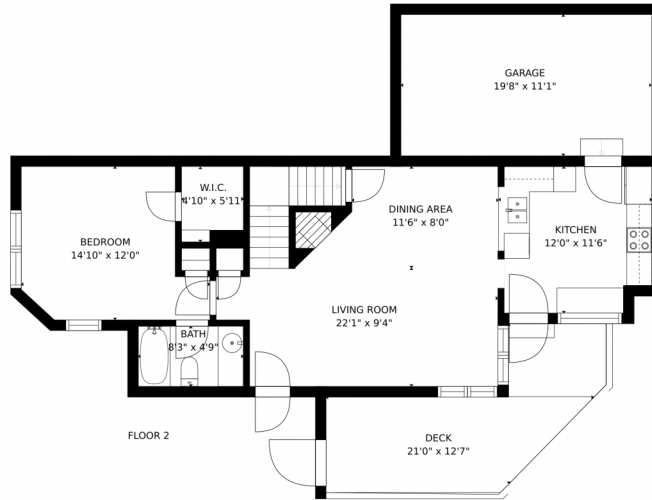
Disclaimer: Sizes and Dimensions are Approximate, Actual May Vary.



Tatyana Sturm
720-350-5909
tatyana@exitrealtydtc.com
<https://thestorckteam.com>



7373 E Iowa Avenue, Denver, CO 80231 – All Floors



Estimated areas

GLA FLOOR 1: 0 sq. ft, excluded 527 sq. ft.
GLA FLOOR 2: 841 sq. ft, excluded 428 sq. ft.
GLA FLOOR 3: 564 sq. ft, excluded 218 sq. ft.
Total GLA 1405 sq. ft, total scanned area 2578 sq. ft.

SIZES AND DIMENSIONS ARE APPROXIMATE, ACTUAL MAY VARY.



Disclaimer: Sizes and Dimensions are Approximate, Actual May Vary.



Tatyana Sturm
720-350-5909
tatyana@exitrealttydc.com
<https://thestorckteam.com>



Scan code
for more
property
details

