



12377 W Mississippi Avenue  
Lakewood, CO 80228  
COMMUNITY: Green Mountain Village

MLS # 8801330  
PRICE \$750,000



Single Family



2594 SQFT



5 Beds



3 Baths



3 Car



0.26 Acre

## PROPERTY DETAILS

This is the one you have been waiting for in the desirable and established Green Mountain Village community of West Lakewood! You will not find a better designed home in the neighborhood, perfectly placed on over a quarter acre lot boasting a full length front porch and massive back patio along with mature landscaping and well maintained grass areas creating a phenomenal outdoor living space complete with a seven car circular driveway, RV Parking, and 3-car garage in back. The interior has also been fully remastered at every turn showcasing over \$70,000 in owner upgrades this May of 2022 including all fully remastered bathrooms on every level, a completely remodeled kitchen including a peninsula addition and built in pantry, new carpet in the basement, new paint throughout, many new lighting features and fixtures, a finished garage, new tile work, refinished hardwoods, new countertops, and the list goes on and on making this sparkling and sprawling abode move in ready to the max. The main level offers three generously sized bedrooms including a true owner's suite with private bathroom along with a full secondary bathroom and gorgeous main living area. The basement is also fully finished with two more bedrooms and a massive rec room. The storage offered in this phenomenal layout is second to none offering cabinetry at every key area including the laundry room along with a storage room on every level of the home and in the expansive 3-car



**Tatyana Sturm**

720-350-5909

tatyana@exitrealttydtc.com

<https://thestorckteam.com>

Scan code  
for more  
property  
details



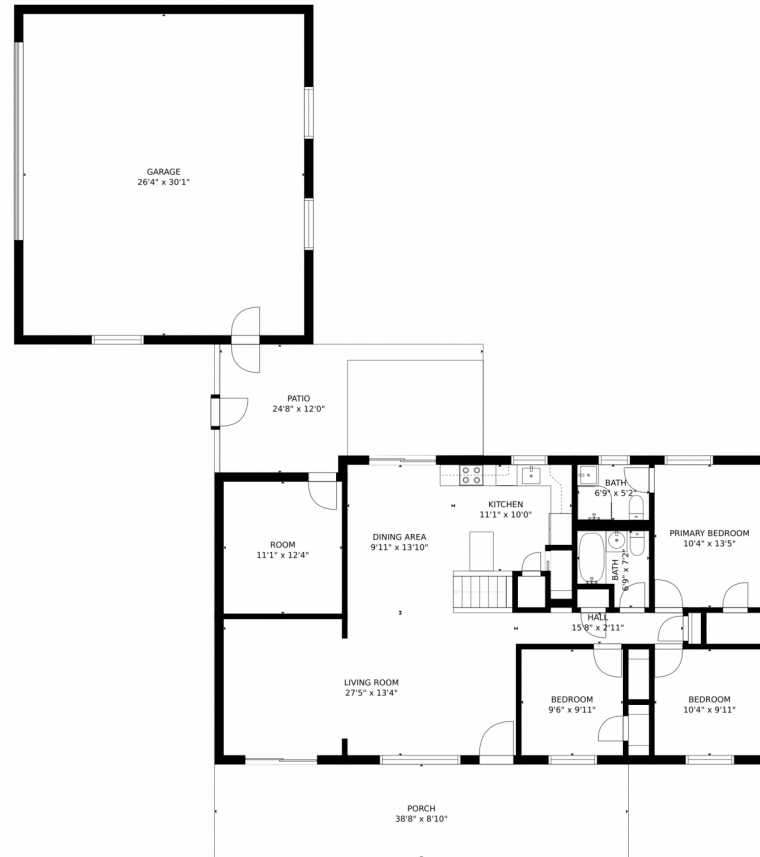
garage. You will love living in Green Mountain Village with the sprawling Green Mountain Park just across Alameda Pkwy minutes away, Red Rocks is only a 15 minute drive along with Dinosaur Ridge and Bandimere Speedway; talk about the perfect location to opt outside and live your best Colorado lifestyle. Shop until you drop with Belmar's outdoor mall or Colorado Mills also just minutes away featuring all of your favorite retail stores and a multitude of local and chain eateries.



**Tatyana Sturm**  
720-350-5909  
tatyana@exitrealtydtc.com  
<https://thestorckteam.com>



# 12377 W Mississippi Avenue, Lakewood, CO 80228 – Main Level



GROSS INTERNAL AREA  
FLOOR 1: 1041 sq. ft, FLOOR 2: 1362 sq. ft  
EXCLUDED AREAS: , GARAGE: 793 sq. ft  
PATIO: 275 sq. ft, PORCH: 341 sq. ft  
TOTAL: 2403 sq. ft  
SIZES AND DIMENSIONS ARE APPROXIMATE, ACTUAL MAY VARY.



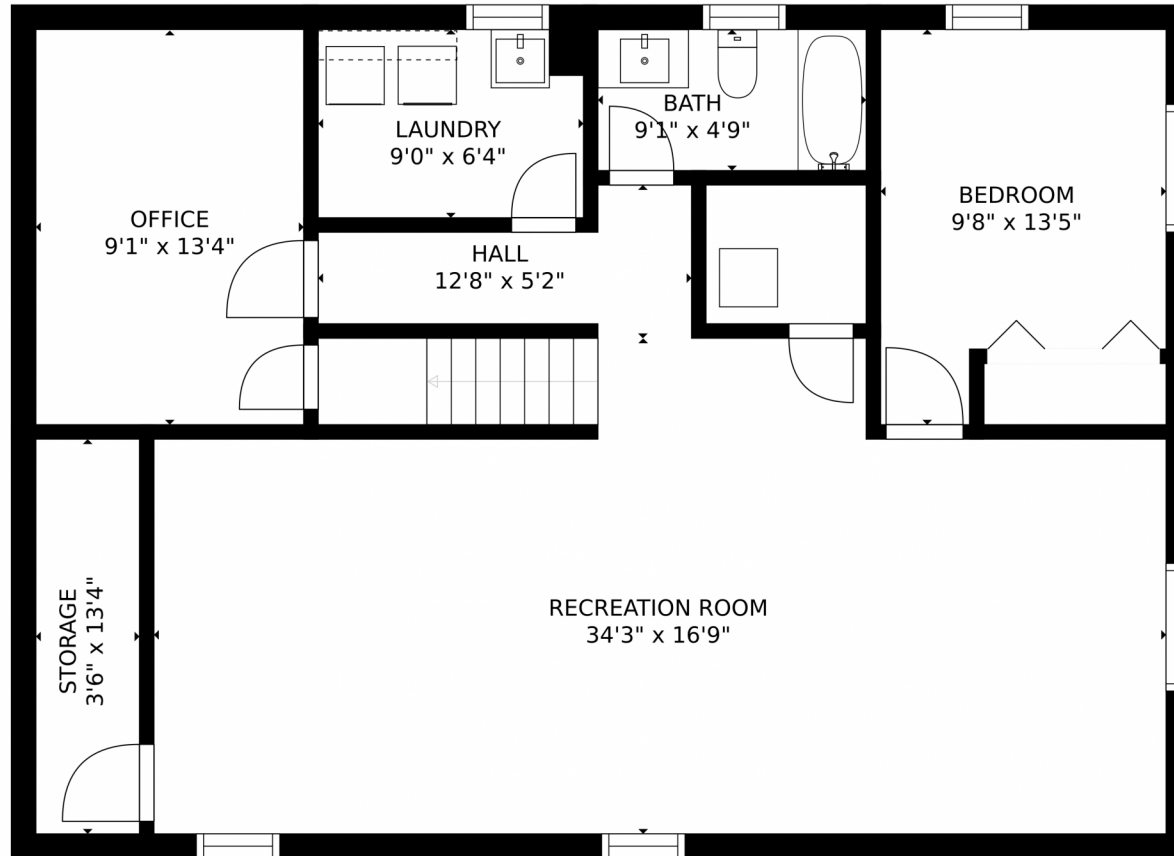
Disclaimer: Sizes and Dimensions are Approximate, Actual May Vary.



**Tatyana Sturm**  
720-350-5909  
tatyana@exitrealttydc.com  
<https://thestorckteam.com>



12377 W Mississippi Avenue, Lakewood, CO 80228 – Basement



GROSS INTERNAL AREA  
FLOOR 1: 1041 sq. ft. FLOOR 2: 1362 sq. ft.  
EXCLUDED AREAS: GARAGE: 793 sq. ft.  
PATIO: 275 sq. ft. PORCH: 341 sq. ft.  
TOTAL: 2403 sq. ft.  
SIZES AND DIMENSIONS ARE APPROXIMATE, ACTUAL MAY VARY.



Disclaimer: Sizes and Dimensions are Approximate, Actual May Vary.



**Tatyana Sturm**  
720-350-5909  
tatyana@exitrealttydc.com  
<https://thestorckteam.com>



# 12377 W Mississippi Avenue, Lakewood, CO 80228 — All Levels



GROSS INTERNAL AREA  
FLOOR 1: 1041 sq. ft, FLOOR 2: 1362 sq. ft  
EXCLUDED AREAS: , GARAGE: 793 sq. ft  
PATIO: 275 sq. ft, PORCH: 341 sq. ft  
TOTAL: 2403 sq. ft  
SIZES AND DIMENSIONS ARE APPROXIMATE, ACTUAL MAY VARY.



Disclaimer: Sizes and Dimensions are Approximate, Actual May Vary.



**Tatyana Sturm**  
720-350-5909  
tatyana@exitrealtydtc.com  
<https://thestorckteam.com>



Scan code  
for more  
property  
details

