



Townhouse



2130 SQFT



4 Beds



1/1 Baths



0.04 Acre



Roxane Webster
303-759-8522
roxane@myhometeamdenver.com



Scan code
for more
property
details



11648 Community Center Drive, Northglenn, CO 80233 – All Levels



Estimated areas

GLA FLOOR 1: 0 sq. ft. excluded 729 sq. ft.
GLA FLOOR 2: 751 sq. ft. excluded 239 sq. ft.
GLA FLOOR 3: 774 sq. ft. excluded 53 sq. ft.
Total GLA 1525 sq. ft. total scanned area 2546 sq. ft.

SIZES AND DIMENSIONS ARE APPROXIMATE, ACTUAL MAY VARY.



Disclaimer: Sizes and Dimensions are Approximate, Actual May Vary.

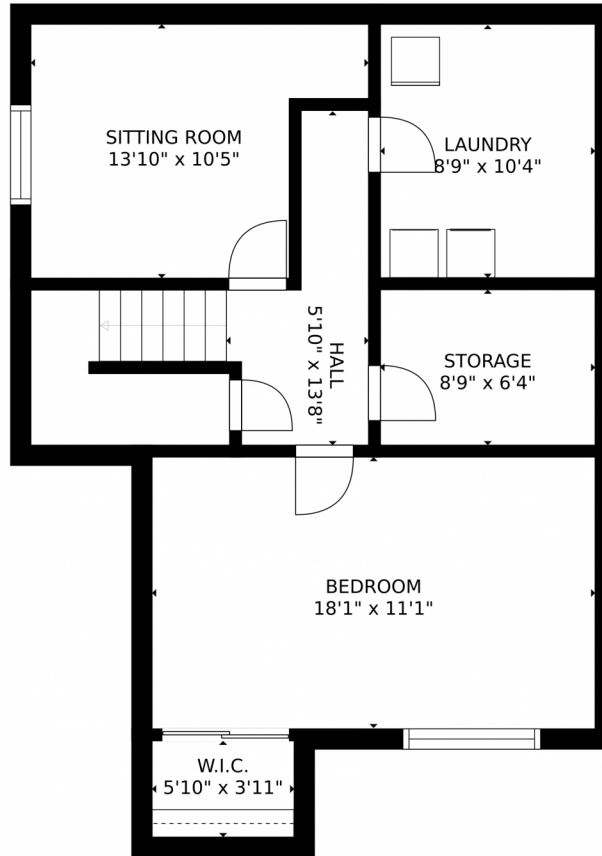


Roxane Webster
303-759-8522
roxane@myhometeamdenver.com



Scan code
for more
property
details



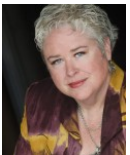


Estimated areas

GLA FLOOR 1: 0 sq. ft., excluded 729 sq. ft.
GLA FLOOR 2: 751 sq. ft., excluded 239 sq. ft.
GLA FLOOR 3: 774 sq. ft., excluded 53 sq. ft.
Total GLA 1525 sq. ft., total scanned area 2546 sq. ft.

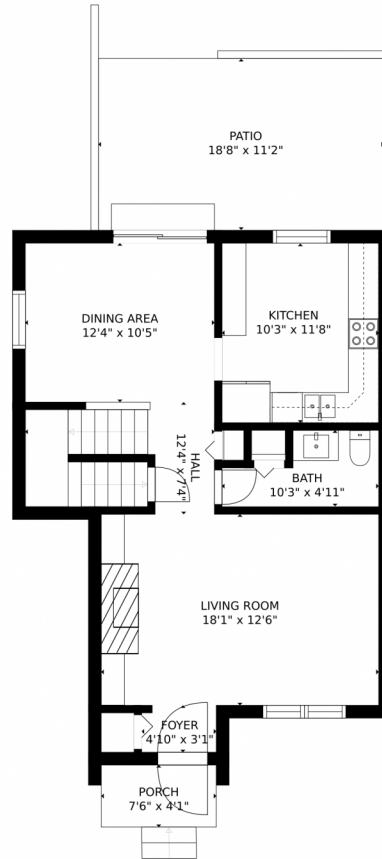
SIZES AND DIMENSIONS ARE APPROXIMATE, ACTUAL MAY VARY.

Disclaimer: Sizes and Dimensions are Approximate, Actual May Vary.



Roxane Webster
303-759-8522
roxane@myhometeamdenver.com





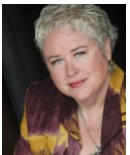
Estimated areas

GLA FLOOR 1: 0 sq. ft., excluded 729 sq. ft.
GLA FLOOR 2: 751 sq. ft., excluded 239 sq. ft.
GLA FLOOR 3: 774 sq. ft., excluded 53 sq. ft.
Total GLA 1525 sq. ft., total scanned area 2546 sq. ft.

SIZES AND DIMENSIONS ARE APPROXIMATE, ACTUAL MAY VARY.



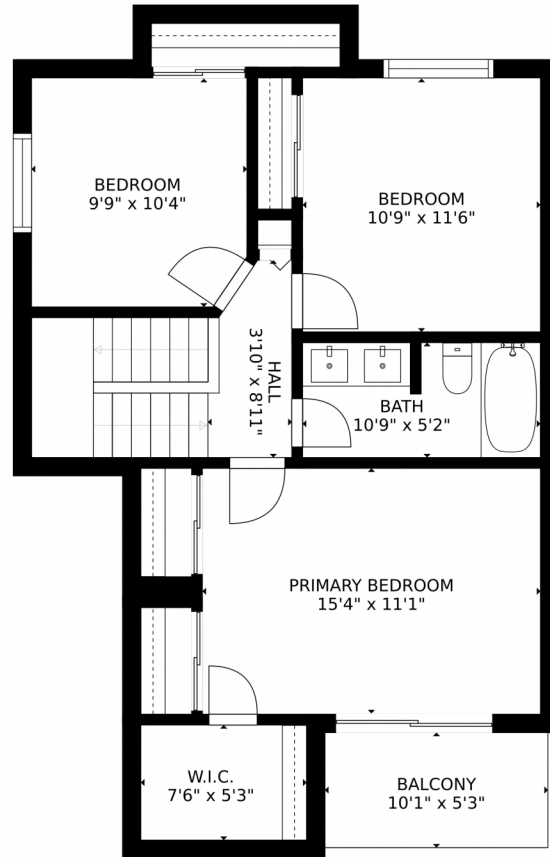
Disclaimer: Sizes and Dimensions are Approximate, Actual May Vary.



Roxane Webster
303-759-8522
roxane@myhometeamdenver.com



11648 Community Center Drive, Northglenn, CO 80233 – 2nd Level



Estimated areas

GLA FLOOR 1: 0 sq. ft., excluded 729 sq. ft.
GLA FLOOR 2: 751 sq. ft., excluded 239 sq. ft.
GLA FLOOR 3: 774 sq. ft., excluded 53 sq. ft.
Total GLA 1525 sq. ft., total scanned area 2546 sq. ft.

SIZES AND DIMENSIONS ARE APPROXIMATE, ACTUAL MAY VARY.



Disclaimer: Sizes and Dimensions are Approximate, Actual May Vary.



Roxane Webster
303-759-8522
roxane@myhometeamdenver.com



Scan code
for more
property
details

