

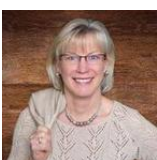
It doesn't get any easier than this!



 Townhouse  2080 SQFT  3 Beds  2/1 Baths  2 Car

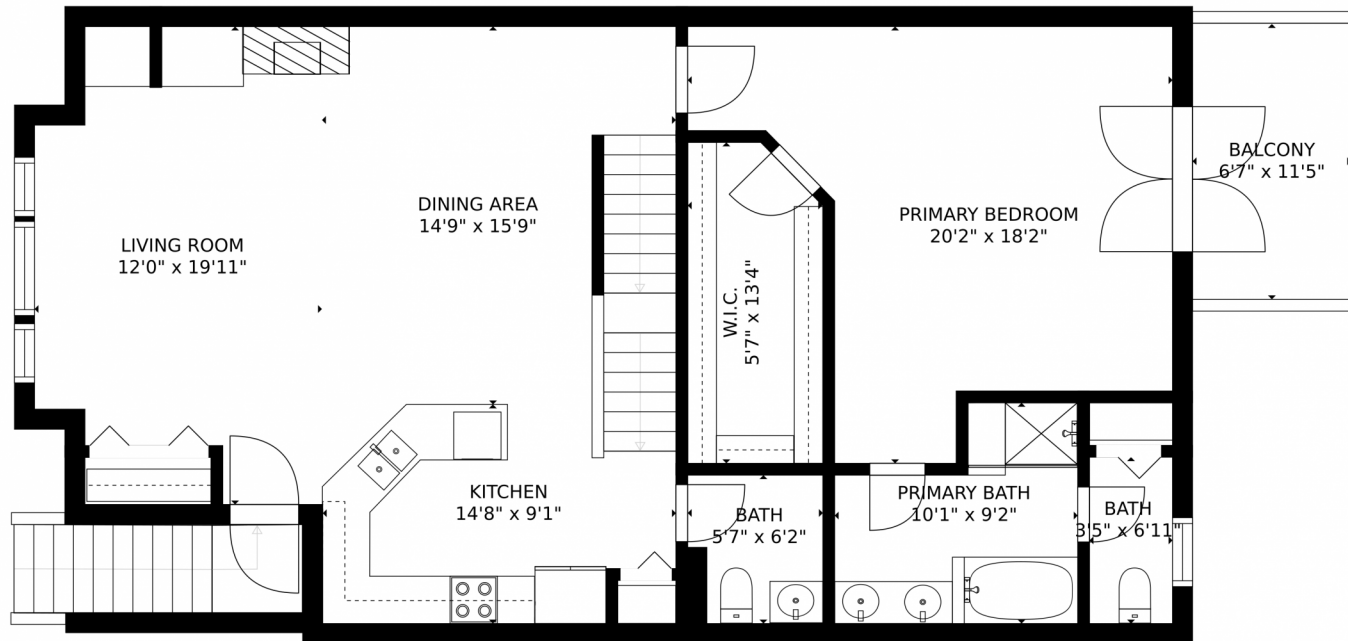
## PROPERTY DETAILS

Nestled in the coveted community of Thraemoor in the Park, this smoke-free, pet free townhome awaits the discernible buyer who has ease of living top of mind. This beautifully maintained home features floor to ceiling south facing windows, plantation shutters for privacy, open concept great room with gas fireplace, wired speakers, built ins, and hardwood floors. The adjacent kitchen features cherry cabinets, stainless steel appliances, and granite countertops. The spacious main bedroom with huge walk-in closet and french doors leading to a sunny deck in a quiet area. Step into the secluded bathroom and a double sink vanity, soaking tub, separate shower, and WC are yours to enjoy. This home features a loft the entire width of the unit overlooking the great room and is perfect as an office, study, library or exercise area. The secondary bedrooms are both located on the lower level with hall bathroom and hall laundry area. This home has plentiful storage including a separate room in the oversized 2-car insulated garage where the mechanical equipment is located and built in shelving. Lakewoods' newest passive Peak View Park will be accessible from this community for nature lovers to enjoy. There is also a small park in the community where summer gatherings are known to happen. There is so much to love about TITP! See it for yourself and fall in love with this Lakewood charmer.



**Jennifer Franklin**  
407-716-3500  
coloradoresales@gmail.com  
<https://oneandonlycolorado.kw.com/>





Estimated areas

GLA FLOOR 1: 496 sq. ft, excluded 596 sq. ft  
GLA FLOOR 2: 1223 sq. ft, excluded 76 sq. ft  
GLA FLOOR 3: 0 sq. ft, excluded 674 sq. ft  
Total GLA 1719 sq. ft, total scanned area 3065 sq. ft

SIZES AND DIMENSIONS ARE APPROXIMATE, ACTUAL MAY VARY.



Disclaimer: Sizes and Dimensions are Approximate, Actual May Vary.

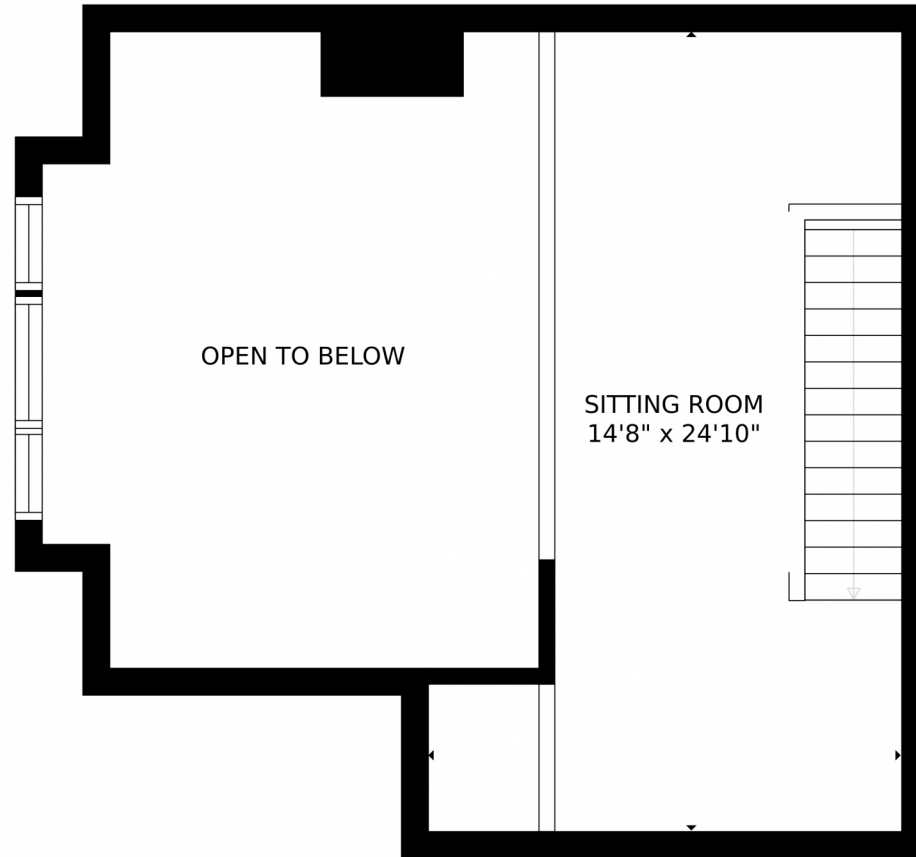


**Jennifer Franklin**  
407-716-3500  
coloradoresales@gmail.com  
<https://oneandonlycolorado.kw.com/>



Scan code  
for more  
property  
details





Estimated areas

GLA FLOOR 1: 496 sq. ft, excluded 596 sq. ft  
GLA FLOOR 2: 1223 sq. ft, excluded 76 sq. ft  
GLA FLOOR 3: 0 sq. ft, excluded 674 sq. ft  
Total GLA 1719 sq. ft, total scanned area 3065 sq. ft

SIZES AND DIMENSIONS ARE APPROXIMATE, ACTUAL MAY VARY.

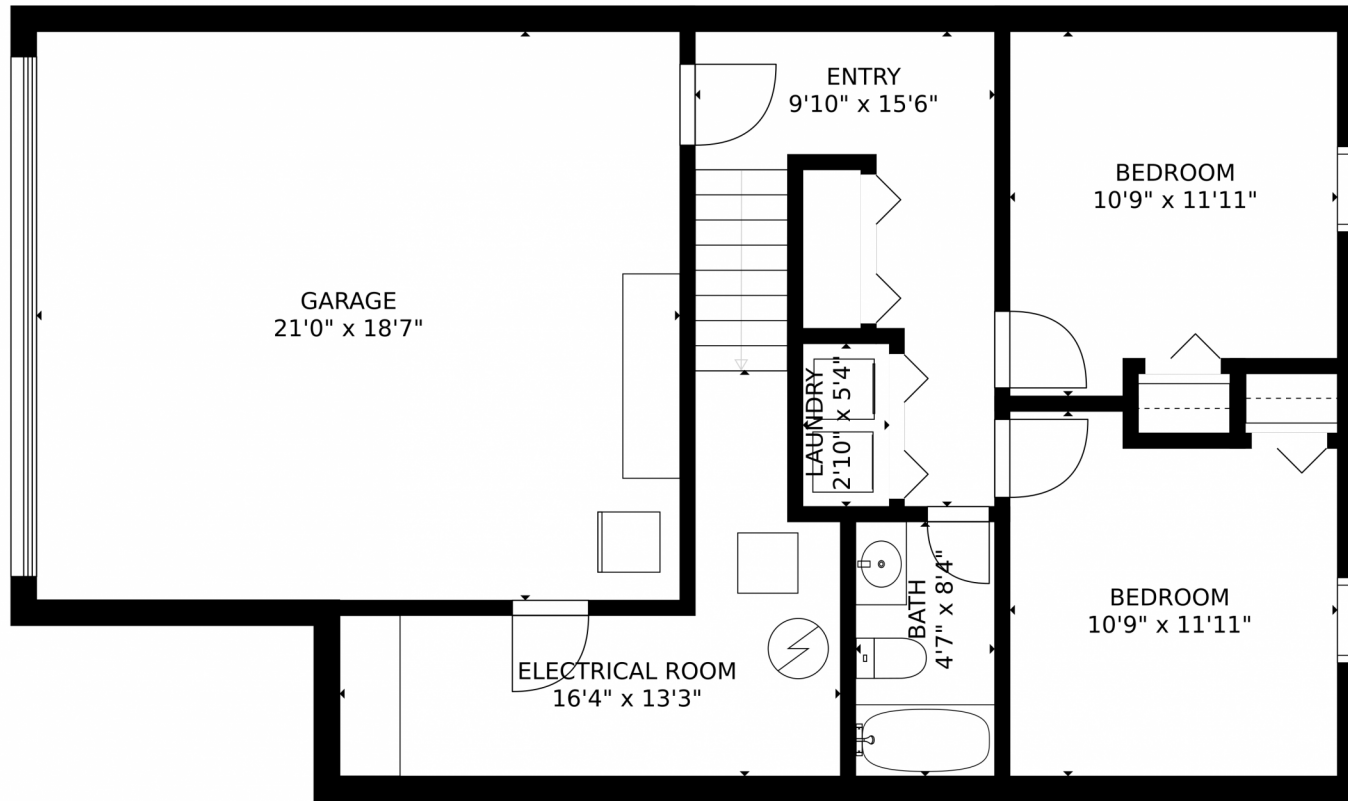


Disclaimer: Sizes and Dimensions are Approximate, Actual May Vary.



**Jennifer Franklin**  
407-716-3500  
coloradoresales@gmail.com  
<https://oneandonlycolorado.kw.com/>





Estimated areas

GLA FLOOR 1: 496 sq. ft, excluded 596 sq. ft  
GLA FLOOR 2: 1223 sq. ft, excluded 76 sq. ft  
GLA FLOOR 3: 0 sq. ft, excluded 674 sq. ft  
Total GLA 1719 sq. ft, total scanned area 3065 sq. ft

SIZES AND DIMENSIONS ARE APPROXIMATE, ACTUAL MAY VARY.



Disclaimer: Sizes and Dimensions are Approximate, Actual May Vary.



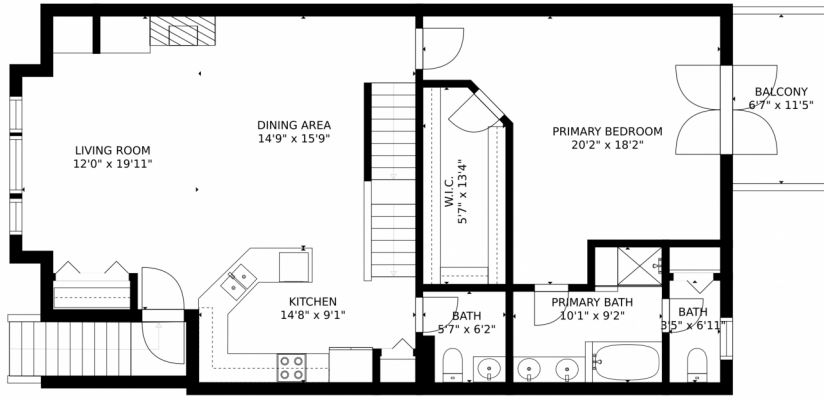
**Jennifer Franklin**  
407-716-3500  
coloradoresales@gmail.com  
<https://oneandonlycolorado.kw.com/>



Scan code  
for more  
property  
details



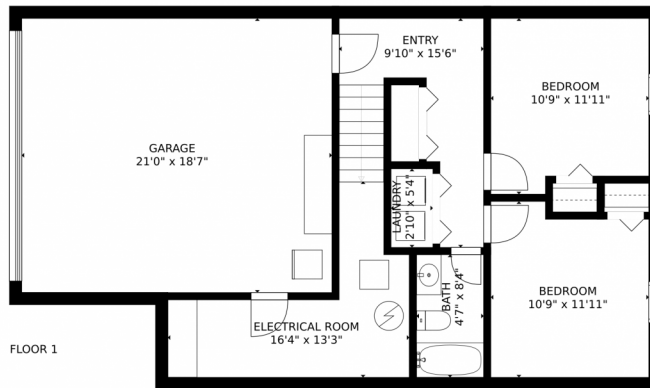
# 6737 W Yale Avenue, Lakewood, CO 80227 – All Levels



FLOOR 2



FLOOR 3



FLOOR 1

### Estimated areas

GLA FLOOR 1: 496 sq. ft. excluded 596 sq. ft.  
GLA FLOOR 2: 1223 sq. ft. excluded 76 sq. ft.  
GLA FLOOR 3: 0 sq. ft. excluded 674 sq. ft.  
Total GLA 1719 sq. ft. total scanned area 3065 sq. ft.

SIZES AND DIMENSIONS ARE APPROXIMATE, ACTUAL MAY VARY.



Disclaimer: Sizes and Dimensions are Approximate, Actual May Vary.



**Jennifer Franklin**  
407-716-3500  
coloradosales@gmail.com  
<https://oneandonlycolorado.kw.com/>



Scan code  
for more  
property  
details

