



5831 W 72nd Drive
 Westminster, CO 80003
 COMMUNITY: SHOENBERG FARMS

MLS # 1831674
 PRICE \$500,000



Single Family



2334 SQFT



4 Beds



2 Baths



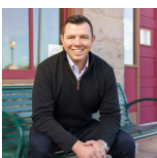
2 Car



0.17 Acre

PROPERTY DETAILS

Welcome home to this updated ranch home in Shoenberg Farms. Everything has been updated in this home in recent years and everything is perfectly maintained. The front of the home is flanked with a large deck and awning for enjoying some morning sun. Enter into the light and spacious living room/dining combination with a bright kitchen that opens to a huge rear deck for outdoor entertaining. This home is a wheelchair accessible home with ramps off front and rear doors. Large family room in the partially finished basement along with a 4th bedroom that has newer egress window. A block away from Faversham Park and Lake, close to Little Dry Creek Trail, 2 miles to Westminster Light Rail. Quick drive to Downtown Westminster or Olde Town Arvada for all your shopping and dining needs.



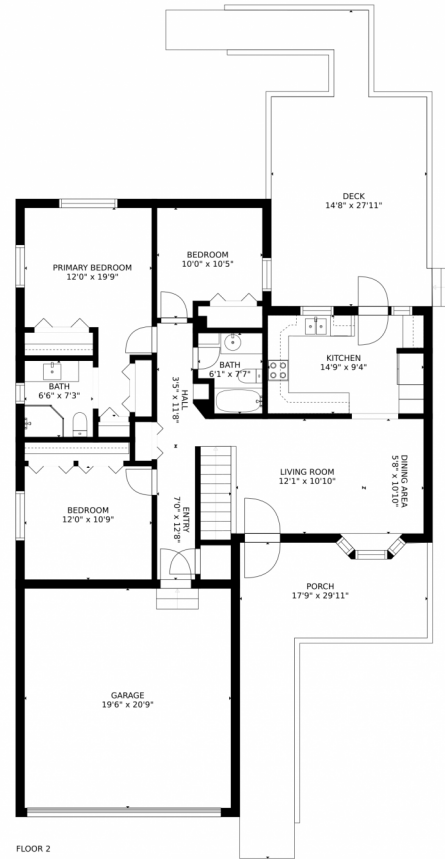
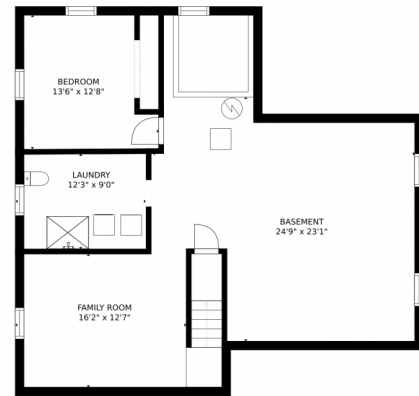
Nate Biggs
 303-257-6495
 nathanmbiggs@gmail.com



Scan code
 for more
 property
 details



5831 W 72nd Drive, Westminster, CO 80003 – All Levels



Estimated areas

GLA FLOOR 1: 0 sq. ft, excluded 1187 sq. ft
GLA FLOOR 2: 1226 sq. ft, excluded 1209 sq. ft
Total GLA 1226 sq. ft, total scanned area 3622 sq. ft

SIZES AND DIMENSIONS ARE APPROXIMATE, ACTUAL MAY VARY.



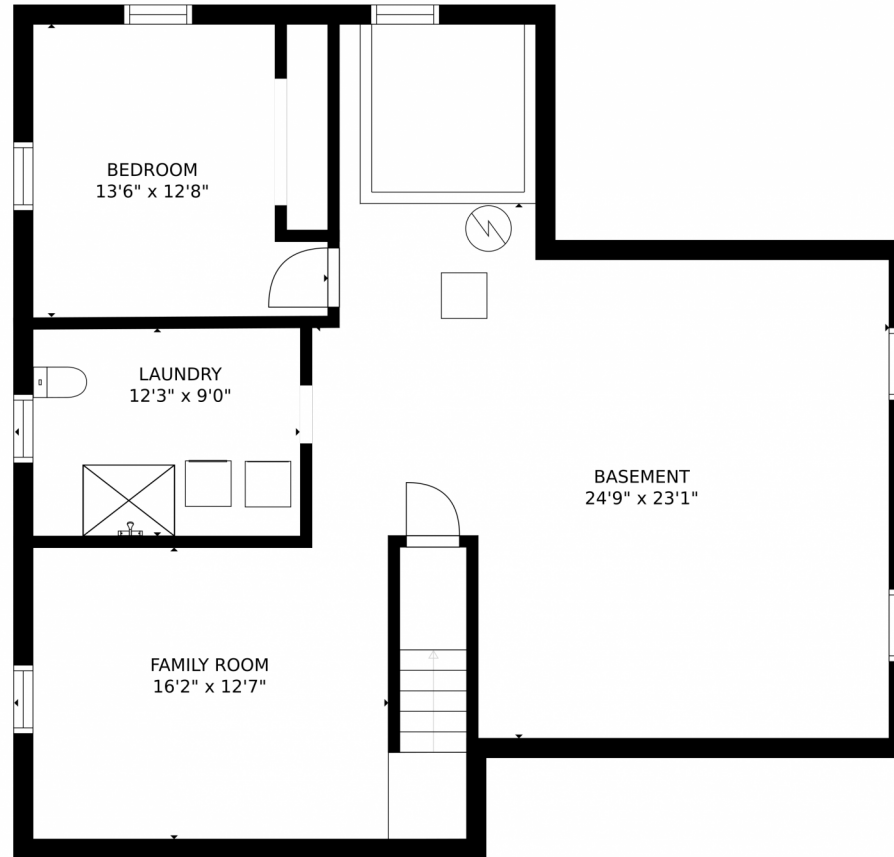
Disclaimer: Sizes and Dimensions are Approximate, Actual May Vary.



Nate Biggs
303-257-6495
nathanmbiggs@gmail.com



5831 W 72nd Drive, Westminster, CO 80003 – Lower Level



Estimated areas

GLA FLOOR 1: 0 sq. ft, excluded 1187 sq. ft
GLA FLOOR 2: 1226 sq. ft, excluded 1209 sq. ft
Total GLA 1226 sq. ft, total scanned area 3622 sq. ft

SIZES AND DIMENSIONS ARE APPROXIMATE, ACTUAL MAY VARY.



Disclaimer: Sizes and Dimensions are Approximate, Actual May Vary.



Nate Biggs
303-257-6495
nathanmbiggs@gmail.com



Scan code
for more
property
details



5831 W 72nd Drive, Westminster, CO 80003 – Main Level



Estimated areas

GLA FLOOR 1: 0 sq. ft, excluded 1187 sq. ft
GLA FLOOR 2: 1226 sq. ft, excluded 1209 sq. ft
Total GLA 1226 sq. ft, total scanned area 3622 sq. ft

SIZES AND DIMENSIONS ARE APPROXIMATE, ACTUAL MAY VARY.



Disclaimer: Sizes and Dimensions are Approximate, Actual May Vary.



Nate Biggs
303-257-6495
nathanmbiggs@gmail.com



Scan code
for more
property
details

