




 Single Family

 2487 SQFT

 4 Beds

 3 Baths

 2 Car

 0 Acre

PROPERTY DETAILS

This home is what you've been looking for - located in Evergreen, completely remodeled, meticulously maintained and located on a gentle and sunny lot. Inside, you'll appreciate the craftsmanship - the pictures truly don't do this house justice. From the hand-sawn reclaimed barnwood floors, to the hand-built railings and trim, nothing was missed. The kitchen is a chef and entertainer's dream with granite countertops, custom cabinets, travertine backsplash, a huge island to seat all of your guests and stainless steel appliances (to include a large gas cooktop and a Wolf downdraft). The dining room features a stacked stone wall with a large gas fireplace for beautiful ambiance while you dine. The primary bedroom includes tons of natural light, crown molding, a walk-in closet and a private deck to enjoy your morning coffee or evening wine. The gorgeous primary bathroom features imported chiseled edge travertine floors and a custom-built reclaimed barn wood cabinet and mirror. All three bathrooms in the home have recently been renovated. The walk-out basement serves as the ideal family room. It is equipped with a beautiful freestanding gas fireplace, a large storage area, a 4th bedroom and a full bathroom. As you step outside of the basement, you are greeted by a 400 sq ft covered deck surrounded by aspens and a flagstone patio with a built-in fire pit where you can enjoy many evenings roasting marshmallows. On just under 1 acre, this private lot is lit all day by that Colorado sunshine and features regulation sized horseshoe pits, a massive new shed for all of your storage needs, a brand



Mike Lynch
 720-402-4818
 mike@madisonprops.com

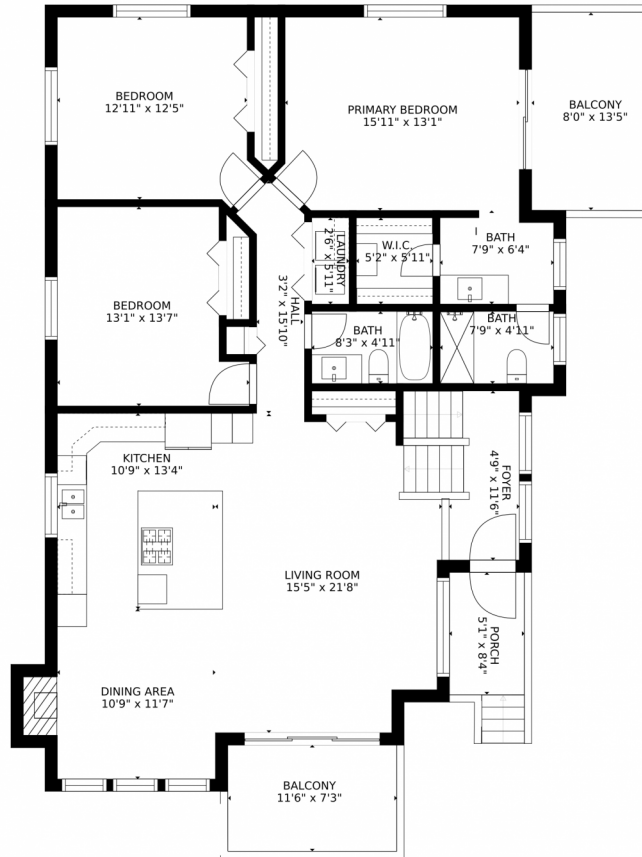


new concrete RV pad, tons of parking and a huge flat area that was built to accommodate a large playground, but can be used for anything. The home has been meticulously maintained from top to bottom. Newer roof and gutters, newer triple pane vinyl windows, newer garage doors, new hot water heater, new front deck and much more. Did we mention, its on public water? Located on a quite cul-de-sac and situated just steps to the bus stop for the local Evergreen schools.



Mike Lynch
720-402-4818
mike@madisonprops.com





Estimated areas

GLA FLOOR 1: 0 sq. ft, excluded 2389 sq. ft
GLA FLOOR 2: 1653 sq. ft, excluded 250 sq. ft
Total GLA 1653 sq. ft, total scanned area 4292 sq. ft

SIZES AND DIMENSIONS ARE APPROXIMATE, ACTUAL MAY VARY.



Disclaimer: Sizes and Dimensions are Approximate, Actual May Vary.



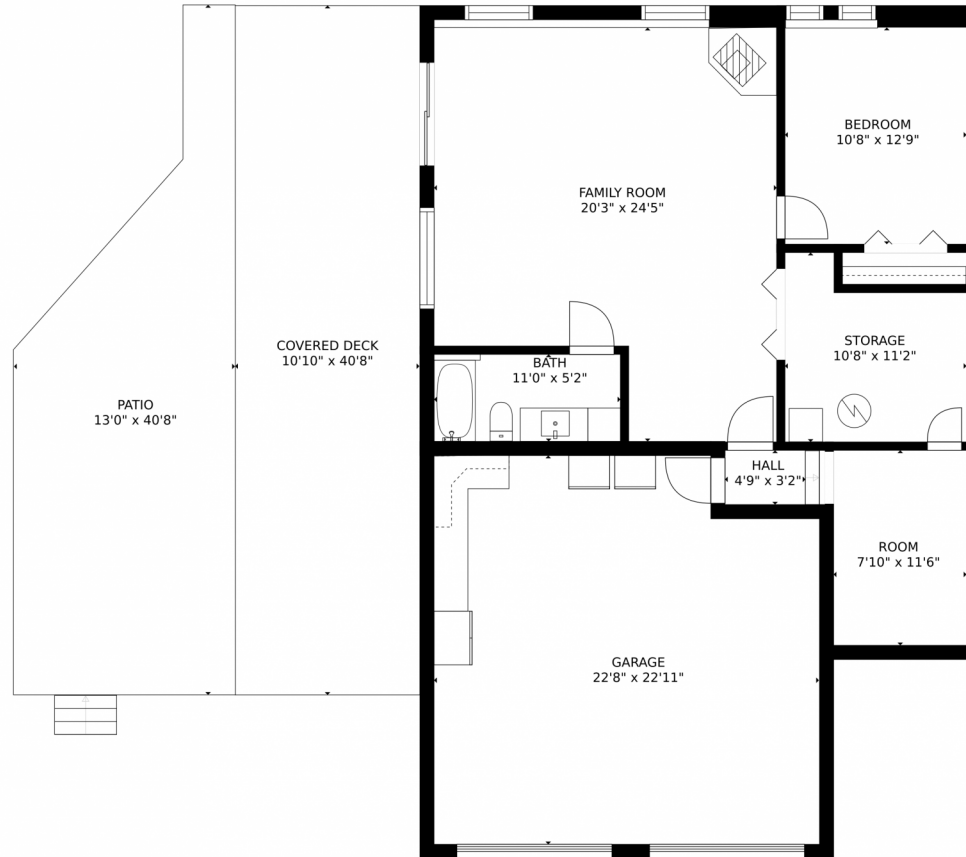
Mike Lynch
720-402-4818
mike@madisonprops.com



Scan code for more property details



34391 Piny Point, Evergreen, CO 80439 – Lower Level



Estimated areas

GLA FLOOR 1: 0 sq. ft, excluded 2389 sq. ft
GLA FLOOR 2: 1653 sq. ft, excluded 250 sq. ft
Total GLA 1653 sq. ft, total scanned area 4292 sq. ft

SIZES AND DIMENSIONS ARE APPROXIMATE, ACTUAL MAY VARY.



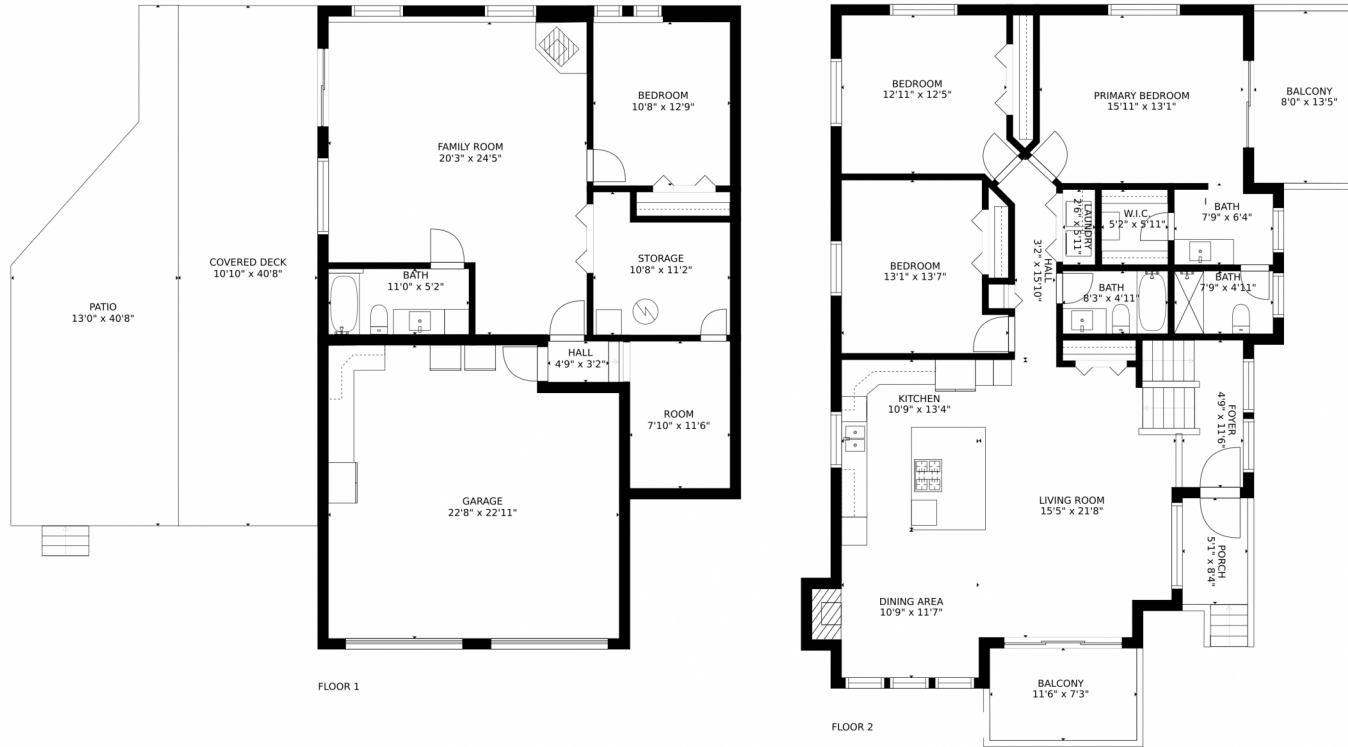
Disclaimer: Sizes and Dimensions are Approximate, Actual May Vary.



Mike Lynch
720-402-4818
mike@madisonprops.com



34391 Piny Point, Evergreen, CO 80439 – All Levels



Estimated areas

GLA FLOOR 1: 0 sq. ft, excluded 2389 sq. ft
GLA FLOOR 2: 1653 sq. ft, excluded 250 sq. ft
Total GLA 1653 sq. ft, total scanned area 4292 sq. ft

SIZES AND DIMENSIONS ARE APPROXIMATE, ACTUAL MAY VARY.



Disclaimer: Sizes and Dimensions are Approximate, Actual May Vary.



Mike Lynch
720-402-4818
mike@madisonprops.com



Scan code
for more
property
details

