



3211 Goldeneye Place
 Superior, CO 80027
 COMMUNITY: Rock Creek Ranch

PRICE \$789,800

Egg-ceptional 4BR, 3BA in Rock Creek Ranch



Single Family



2200 SQFT



4 Beds



3 Baths



2 Car



0.12 Acre

PROPERTY DETAILS

This sun filled home has it all - the best location, upgrades & condition at an incredible price. Open, light filled home is move in ready. From the newly finished lower level to the updated primary bath the work has been done. The spacious updated & upgraded kitchen with island & farm sink has lots of storage. Lots of cozy space to gather near the FP in the family room or in the formal living room. Upstairs the primary BR features a designer walk-in closet plus an updated luxurious bath, Two additional upstairs bedrooms, with designer closets share an updated bath. The backyard features a relaxing, included hot tub & plenty of space for outdoor entertaining & activities. The garage has all you need to keep your tools & toys organized -- cabinets and shelves stay & so does the floor! The safe cul de sac location has access to extensive trail system of Rock Creek. You are literally an 8 minute walk from shopping, coffee & nature & Superior Community center



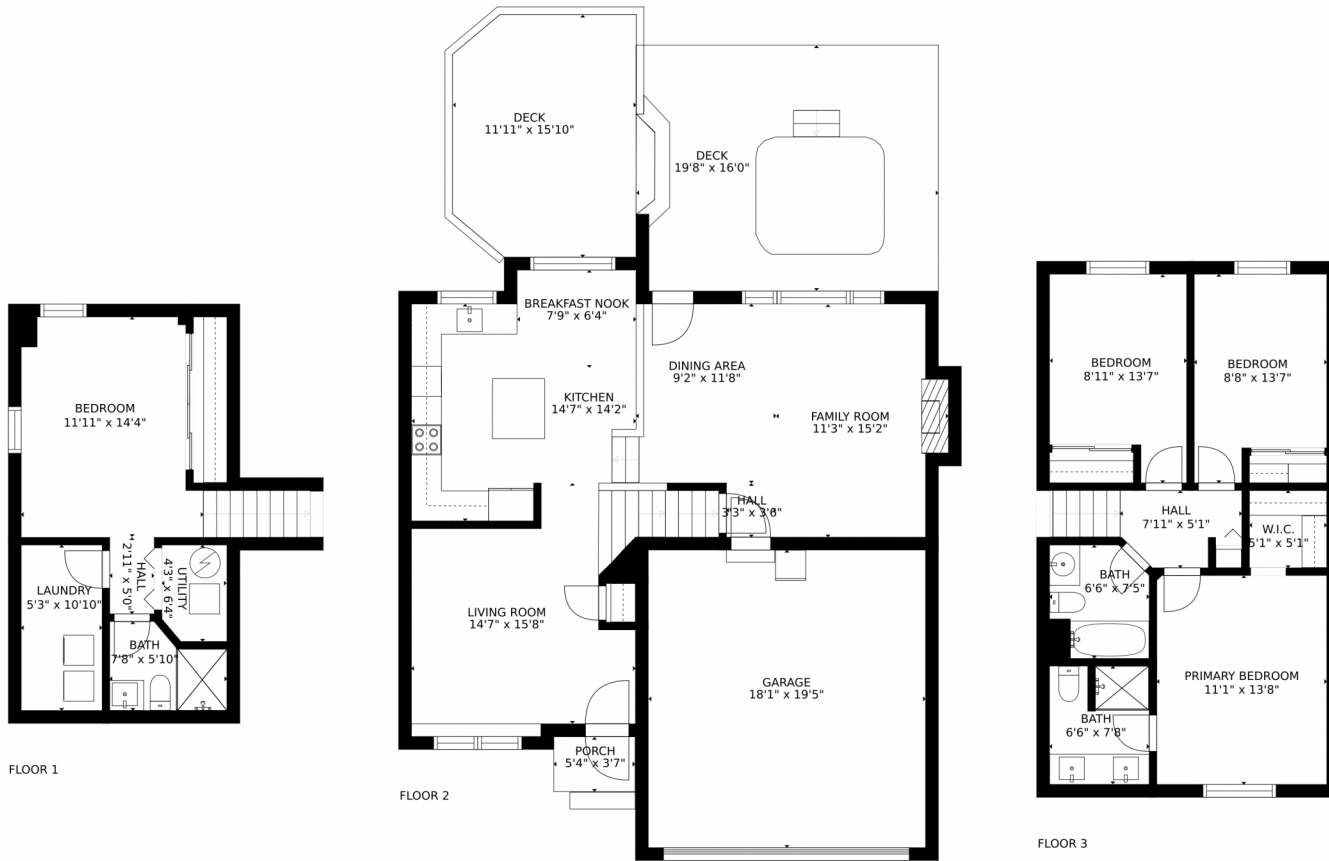
Colleen Vandendriessche
 303-877-7440
 colleen@relopros.com



Scan code
 for more
 property
 details



3211 Goldeneye Place, Superior, CO 80027 – All Levels



Estimated areas

GLA FLOOR 1: 0 sq. ft., excluded 439 sq. ft.
 GLA FLOOR 2: 813 sq. ft., excluded 919 sq. ft.
 GLA FLOOR 3: 691 sq. ft., excluded 0 sq. ft.
 Total GLA 1506 sq. ft., total scanned area 2864 sq. ft.

SIZES AND DIMENSIONS ARE APPROXIMATE, ACTUAL MAY VARY.



Disclaimer: Sizes and Dimensions are Approximate, Actual May Vary.



Colleen Vandendriessche
 303-877-7440
 colleen@relopros.com



Scan code
 for more
 property
 details

