



1306 Skyline Drive  
Erie, CO 80516

PRICE \$799,500



Single Family



3817 SQFT



3 Beds



3 Baths



2 Car



0.17 Acre

## PROPERTY DETAILS

All you will need to do is enjoy the mountain views from this move-in ready luxurious ranch style home in Vista Ridge; home to the Colorado Nat'l Golf Club. This home was designed for the family that wants to enjoy life & friends, Truly a lock & leave:HOA takes care of the outside & there's nothing to do in the inside. Heavily upgraded, with so much thought & care so be prepared to be wowed. Kitchen enthusiasts will appreciate the workspaces, designer pantry, state of the art appliances, seamlessly connecting with the family room & sunfilled dining area. Viewtiful Primary BR w/soothing BA & incredible closet. Even the laundry room is custom designed w/organization & storage. Entertaining al fresco on either the upper or lower decks, Custom finished walk out bsmt w/wine cellar+tasting room + decked out bar. Amazing amt of organized storage. Wait to you see this "every man's dream of a garage" prewired for 220 volt. A rare opportunity to have everything perfect in this great location



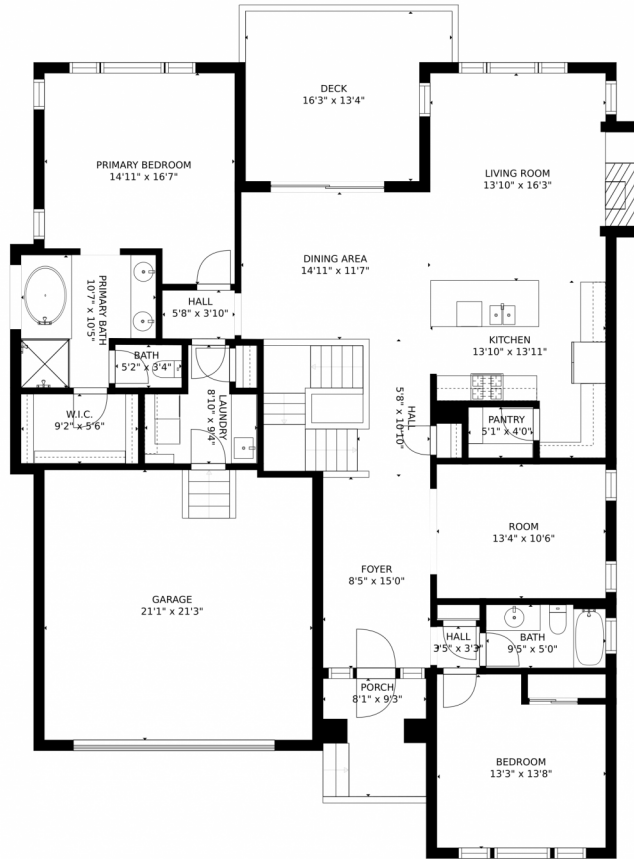
Colleen Vandendriessche  
303-877-7440  
colleen@relopros.com



Scan code  
for more  
property  
details



# 1306 Skyline Drive, Erie, CO 80516 – Main Level



### Estimated areas

GLA FLOOR 1: 0 sq. ft, excluded 2096 sq. ft  
GLA FLOOR 2: 2001 sq. ft, excluded 755 sq. ft  
Total GLA 2001 sq. ft, total scanned area 4852 sq. ft

SIZES AND DIMENSIONS ARE APPROXIMATE, ACTUAL MAY VARY.



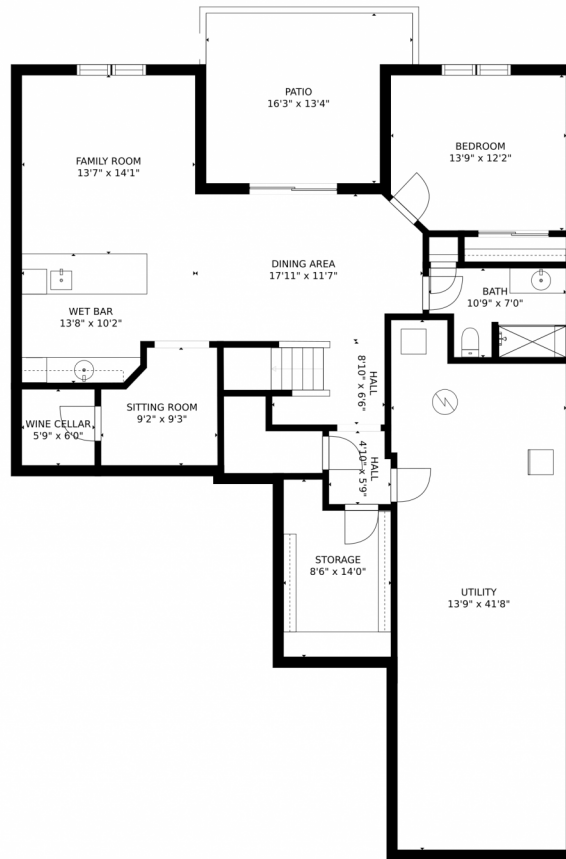
Disclaimer: Sizes and Dimensions are Approximate, Actual May Vary.



Colleen Vandendriessche  
303-877-7440  
colleen@relopros.com



# 1306 Skyline Drive, Erie, CO 80516 – Lower Level



### Estimated areas

GLA FLOOR 1: 0 sq. ft, excluded 2096 sq. ft  
GLA FLOOR 2: 2001 sq. ft, excluded 755 sq. ft  
Total GLA 2001 sq. ft, total scanned area 4852 sq. ft

SIZES AND DIMENSIONS ARE APPROXIMATE, ACTUAL MAY VARY.



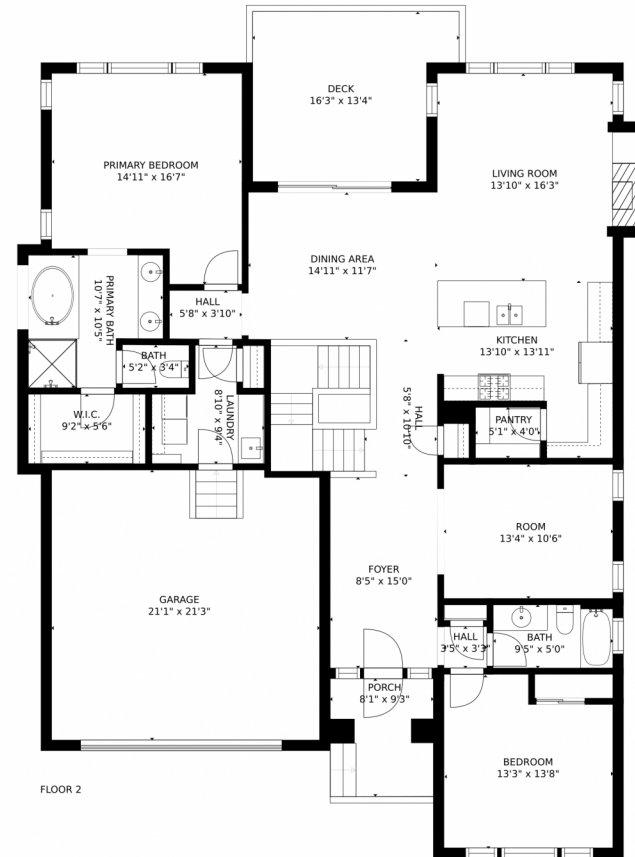
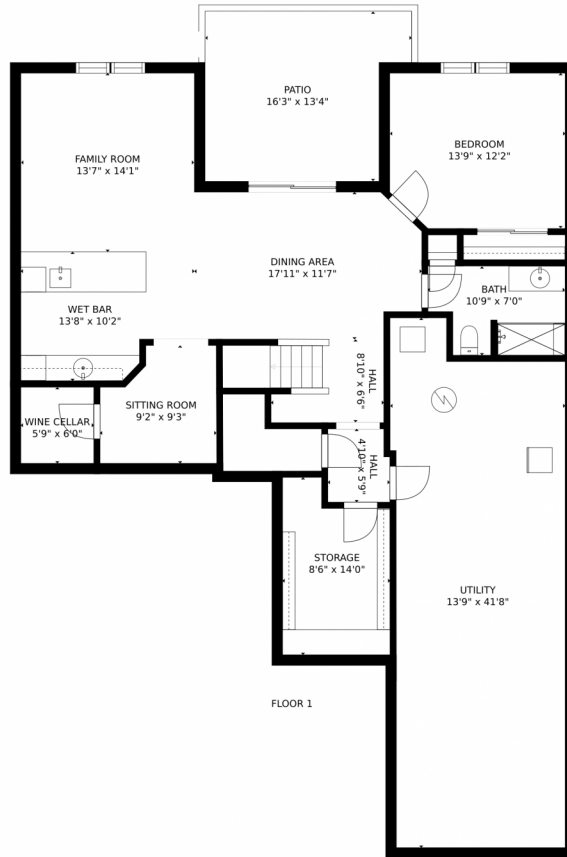
Disclaimer: Sizes and Dimensions are Approximate, Actual May Vary.



Colleen Vandendriessche  
303-877-7440  
colleen@relopros.com



# 1306 Skyline Drive, Erie, CO 80516 – All Levels



### Estimated areas

GLA FLOOR 1: 0 sq. ft, excluded 2096 sq. ft  
 GLA FLOOR 2: 2001 sq. ft, excluded 755 sq. ft  
 Total GLA 2001 sq. ft, total scanned area 4852 sq. ft

SIZES AND DIMENSIONS ARE APPROXIMATE, ACTUAL MAY VARY.



Disclaimer: Sizes and Dimensions are Approximate, Actual May Vary.



Colleen Vandendriessche  
 303-877-7440  
 colleen@relopros.com

