



14252 W Warren Place
Lakewood, CO 80228
COMMUNITY: Hutchinsons Green Mountain Village

MLS # 3831635
PRICE \$780,000



Single Family



2802 SQFT



4 Beds



2/1 Baths



2 Car



0.16 Acre

PROPERTY DETAILS

This beautiful two story home is located in Green Mountain and sits on cul-de-sac featuring great mountain views. It features 3 floors including a sunny walk out basement to a large backyard. The home has great lighting along with 10 ft ceilings and hardwood floors on the main floor. The master bedroom suite upstairs is spacious and boasts high ceilings and great views! There are 3 additional bedrooms upstairs and a conveniently located laundry room. The walkout finished basement has a great family room with a built-in entertainment center, sound system and wet bar. If that isn't enough, you'll find a fabulous study or craft room, a storage room, and rough-in plumbing for an additional bathroom if desired. Other features not to miss, include a newer garage door, plantation shutters in living room, upgraded door hardware and several newer light fixtures, as well as a regarded radon mitigation system. Furnace and A/C is approx 10 years old, roof was replaced in 2017. The home is located in a quaint and quiet neighborhood with very low home turnover and no homeowners association. With added convenience this home is close to hiking, biking, walking trails, parks, groceries, restaurants, C470 and only about 20 minutes to downtown.

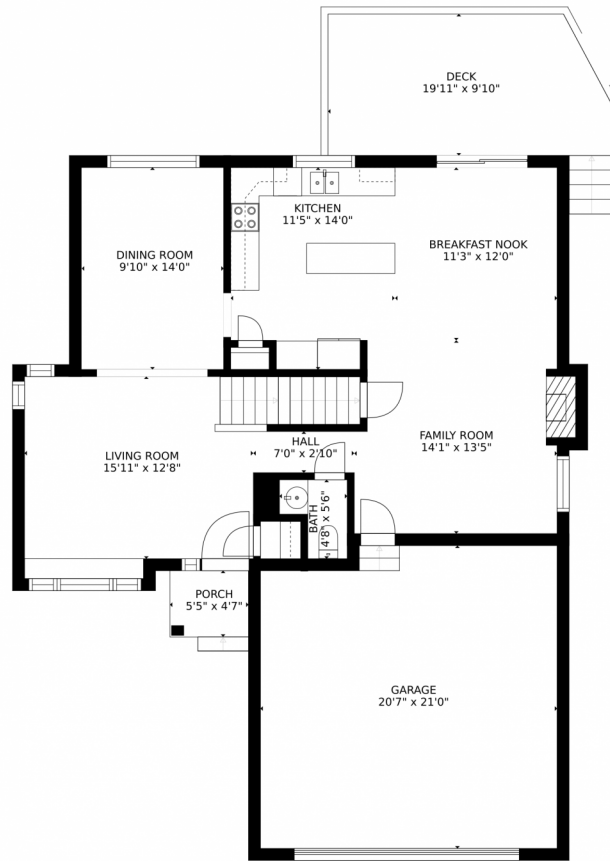


Katie Ford
720-609-1392
katiemford@kw.com
<https://yourfordgroup.kw.com/>



Scan code
for more
property
details





Estimated areas

GLA FLOOR 1: 0 sq. ft. excluded 985 sq. ft.
GLA FLOOR 2: 1039 sq. ft. excluded 215 sq. ft.
GLA FLOOR 3: 1067 sq. ft. excluded 234 sq. ft.
Total GLA 2106 sq. ft. total scanned area 4040 sq. ft.

SIZES AND DIMENSIONS ARE APPROXIMATE, ACTUAL MAY VARY.



Disclaimer: Sizes and Dimensions are Approximate, Actual May Vary.



Katie Ford

720-609-1392

katiemford@kw.com

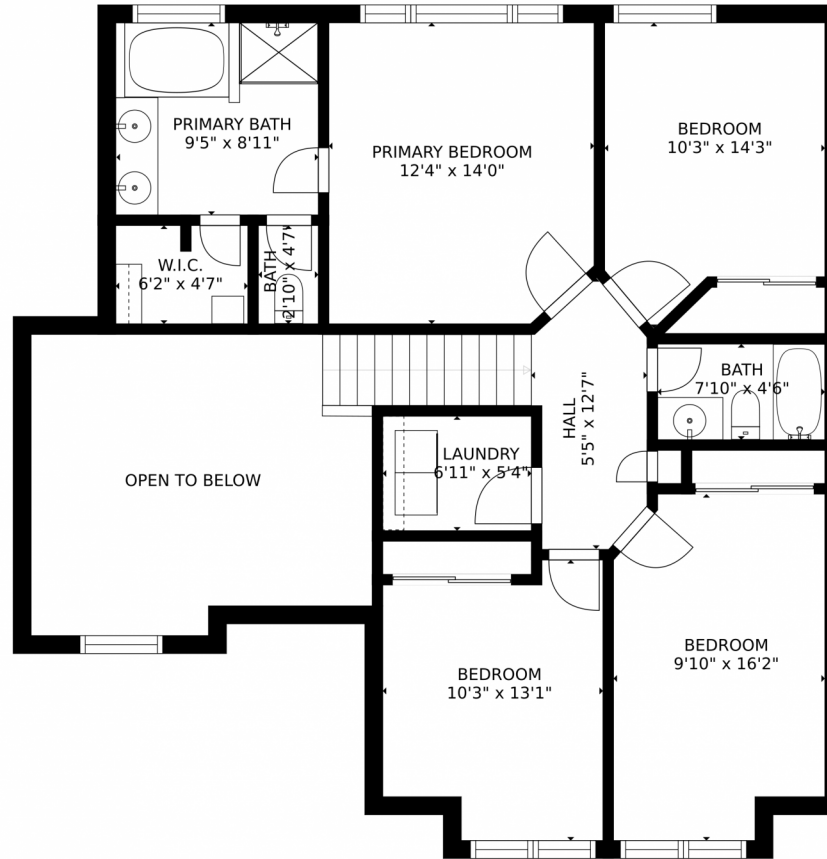
<https://yourfordgroup.kw.com/>



Scan code
for more
property
details



14252 W Warren Place, Lakewood, CO 80228 – Second Level



Estimated areas

GLA FLOOR 1: 0 sq. ft. excluded 985 sq. ft.
GLA FLOOR 2: 1039 sq. ft. excluded 215 sq. ft.
GLA FLOOR 3: 1067 sq. ft. excluded 234 sq. ft.
Total GLA 2106 sq. ft. total scanned area 4040 sq. ft.

SIZES AND DIMENSIONS ARE APPROXIMATE, ACTUAL MAY VARY.



Disclaimer: Sizes and Dimensions are Approximate, Actual May Vary.



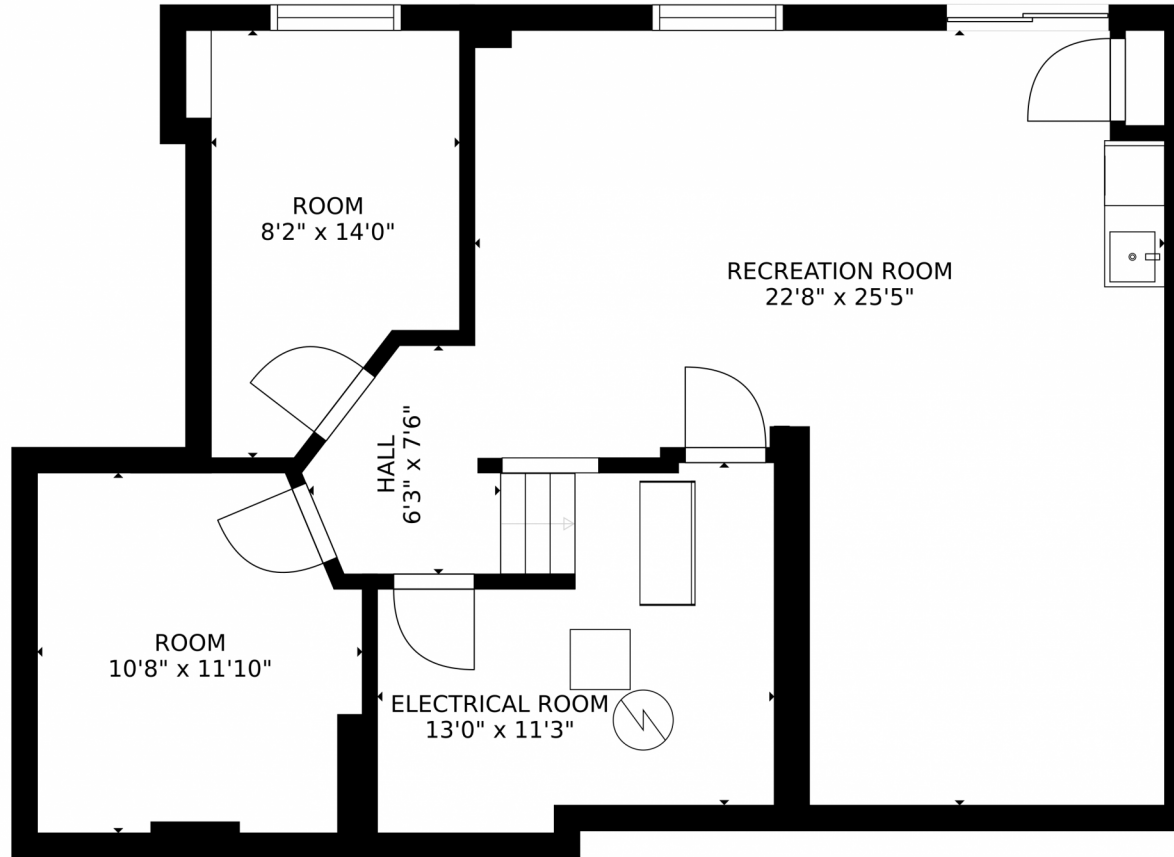
Katie Ford
720-609-1392
katiemford@kw.com
<https://yourfordgroup.kw.com/>



Scan code
for more
property
details



14252 W Warren Place, Lakewood, CO 80228 – Basement



Estimated areas

GLA FLOOR 1: 0 sq. ft, excluded 985 sq. ft
GLA FLOOR 2: 1039 sq. ft, excluded 215 sq. ft
GLA FLOOR 3: 1067 sq. ft, excluded 234 sq. ft
Total GLA 2106 sq. ft, total scanned area 4040 sq. ft

SIZES AND DIMENSIONS ARE APPROXIMATE, ACTUAL MAY VARY.



Disclaimer: Sizes and Dimensions are Approximate, Actual May Vary.



Katie Ford
720-609-1392
katiemford@kw.com
<https://yourfordgroup.kw.com/>



14252 W Warren Place, Lakewood, CO 80228 – All Levels



Estimated areas

GLA FLOOR 1: 0 sq. ft. excluded 985 sq. ft.
GLA FLOOR 2: 1039 sq. ft. excluded 215 sq. ft.
GLA FLOOR 3: 1067 sq. ft. excluded 234 sq. ft.
Total GLA 2106 sq. ft. total scanned area 4040 sq. ft.

SIZES AND DIMENSIONS ARE APPROXIMATE, ACTUAL MAY VARY.



Disclaimer: Sizes and Dimensions are Approximate, Actual May Vary.



Katie Ford
720-609-1392
katiemford@kw.com
<https://yourfordgroup.kw.com/>



Scan code
for more
property
details

