



11190 East Wesley Avenue
Aurora, CO 80014
COMMUNITY: Eastridge

PRICE \$649,900

Beautiful Mountain Views in the Heart of Eastridge in Aurora



Single Family



2847 SQFT



3 Beds



2/1 Baths



2 Car



0.22 Acre

PROPERTY DETAILS

Excellent 3 Bedroom (Could be 4 bedrooms), 3 Bathroom, 2-Car Garage, huge backyard Home w/ an Energy Efficient Sauna for your at Home Spa pleasure! This fantastic family Home is located in the coveted Eastridge neighborhood. The Kitchen features an extra eating space and there is a separate formal dining area that shares a 2-sided wood burning Fireplace w/ the vaulted ceiling open Living room. The loft overlooks the Living Room and leads the way to the Primary Bedroom and Bath and upper bedroom. If you enjoy the outdoors, you will find a beautiful view from the Primary Bedroom Balcony and a huge backyard great for entertaining and ready for your finishing touches. Wood flooring, tile and carpet are throughout the home. Newly completed items since 2021 include: New roof, gutters and soffits, new furnace, new HVAC, new Hot Water Heater and new electrical panel. Centrally located within walking distance of parks and is in the Cherry Creek 5 school district. Close to shopping and is less than 2 miles from light rail and easy access to I-225.

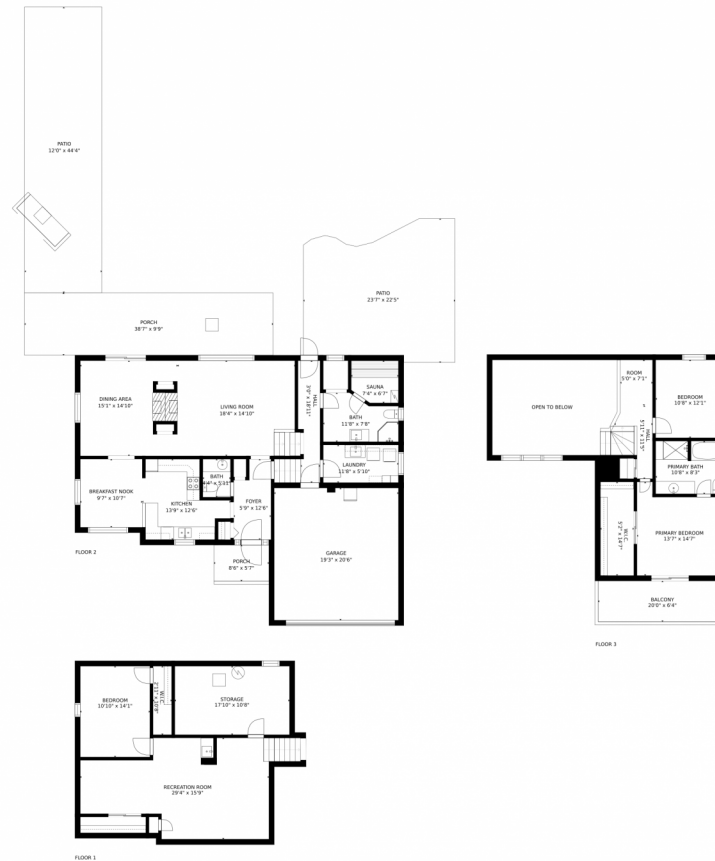
Muriel Williams
720-635-2135
murielwilliams@yahoo.com



Scan code
for more
property
details



11190 East Wesley Avenue, Aurora, CO 80014 – All Levels



Estimated areas

GLA FLOOR 1: 0 sq. ft, excluded 933 sq. ft
GLA FLOOR 2: 1208 sq. ft, excluded 1854 sq. ft
GLA FLOOR 3: 695 sq. ft, excluded 444 sq. ft
Total GLA 2003 sq. ft, total scanned area 5234 sq. ft

SIZES AND DIMENSIONS ARE APPROXIMATE, ACTUAL MAY VARY.



Disclaimer: Sizes and Dimensions are Approximate, Actual May Vary.

Muriel Williams
720-635-2135
murielwilliams@yahoo.com

