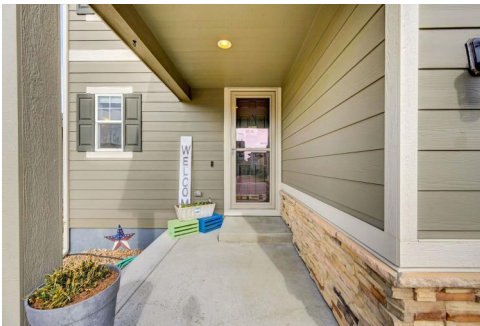




5032 S Wenatchee Circle
 Aurora, CO 80015
 COMMUNITY: Copperleaf

MLS # 5669309
 PRICE \$550,000



Single Family 1818 SQFT 3 Beds 2/1 Baths 2 Car 0.12 Acre

PROPERTY DETAILS

Welcome home to the established and desirable Copperleaf community of Southeast Aurora! The Coral Model of Richmond American was beautifully designed with your every lifestyle convenience in mind from a sprawling and open main level to the three bedroom layout with a loft and laundry facility upstairs. Everything was thought of in the spacious and welcoming gourmet kitchen showcasing an expansive center island complete with popular pendant lighting and breakfast bar seating for your mornings on the go along with all stainless steel appliances including the convenient double oven. The main level is completed by the eat-in dining nook and living room quietly nestled at the back of the home. Next venture upstairs where you are greeted by a sunny loft area adjacent to the owner's suite along with two additional bedrooms and a secondary full bathroom. Make lasting memories this Summer hosting a fabulous BBQ in your new backyard with family and friends featuring plenty of space for lounge and play along with a partially Xeriscaped design to save you time and money on maintenance. Cool off in the one-of-a-kind community-only pool and Arboretum and meet your new neighbors, there's a standard and splash pool along with a stunning clubhouse available for your next party. Miles and miles of trails take you throughout the neighborhood so opting outside for a jog or a bike ride is never an issue. Just minutes from E-470 making any



Tatyana Sturm
 720-350-5909
 tatyana@exitrealtydtc.com
 https://thestorckteam.com

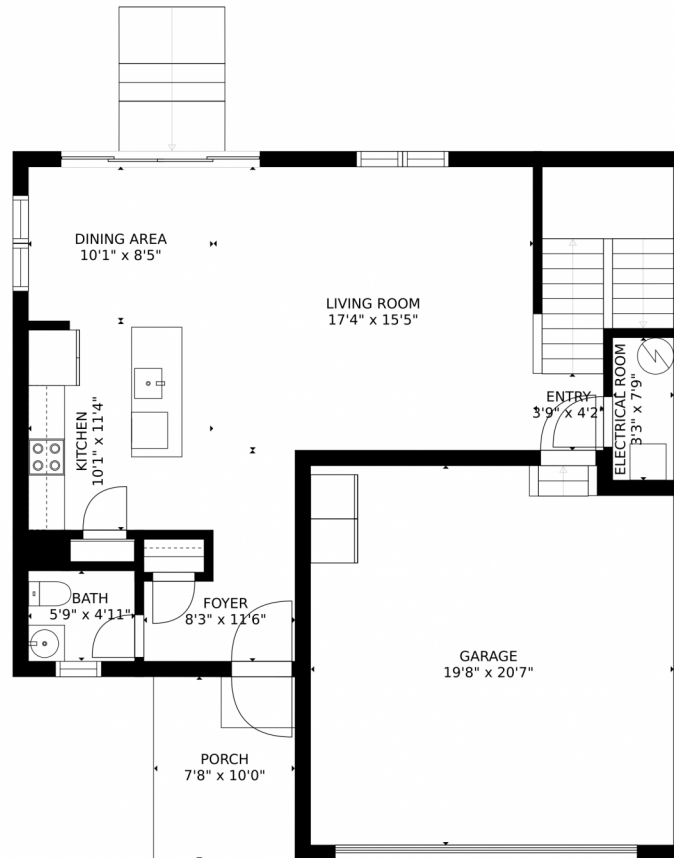


commute easy. Residents of the Copperleaf community enjoy the award winning education system of Cherry Creek Schools including Eaglecrest HS. Enjoy endless dining, shopping, and entertainment options in the Southlands Outdoor Retail District featuring a full AMC Dine-In Movie Theater, abundant casual dining options with higher-end restaurant options as well, and so many shopping choices. The Southlands Mall also features a robust courtyard area with a mini splash park in the Summer and a skating rink in the Winter.



Tatyana Sturm
720-350-5909
tatyana@exitrealtydtc.com
<https://thestorckteam.com>





Estimated areas

GLA FLOOR 1: 783 sq. ft, excluded 592 sq. ft
GLA FLOOR 2: 1174 sq. ft, excluded 0 sq. ft
Total GLA 1957 sq. ft, total scanned area 2549 sq. ft

SIZES AND DIMENSIONS ARE APPROXIMATE, ACTUAL MAY VARY.



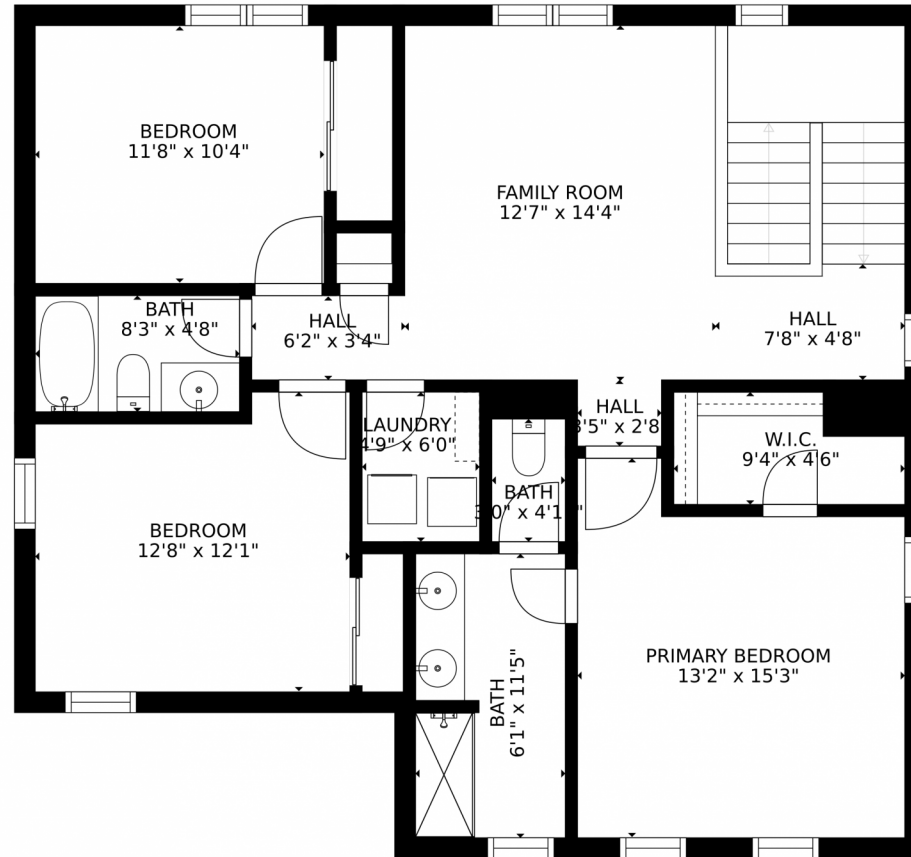
Disclaimer: Sizes and Dimensions are Approximate, Actual May Vary.



Tatyana Sturm
720-350-5909
tatyana@exitrealtydtc.com
<https://thestorckteam.com>



5032 S Wenatchee Circle, Aurora, CO 80015 – Second Level



Estimated areas

GLA FLOOR 1: 783 sq. ft, excluded 592 sq. ft
GLA FLOOR 2: 1174 sq. ft, excluded 0 sq. ft
Total GLA 1957 sq. ft, total scanned area 2549 sq. ft

SIZES AND DIMENSIONS ARE APPROXIMATE, ACTUAL MAY VARY.



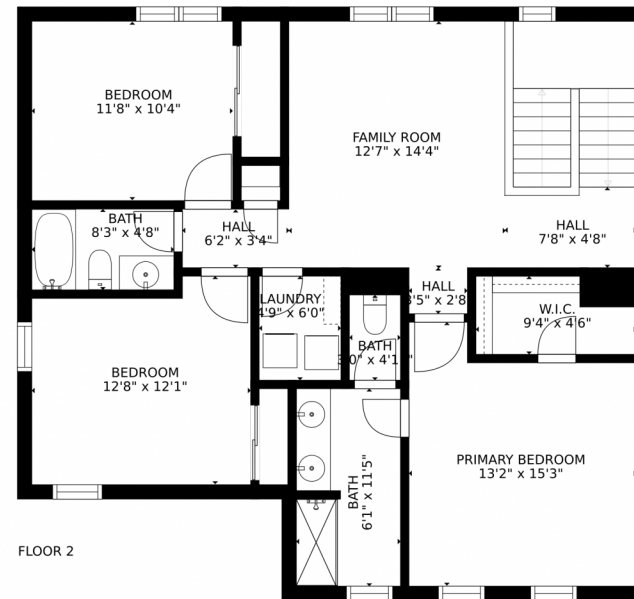
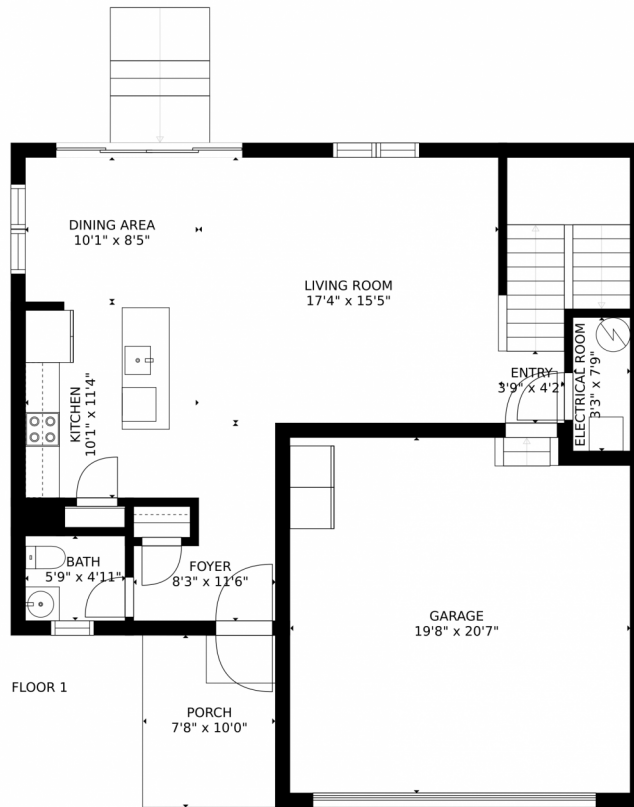
Disclaimer: Sizes and Dimensions are Approximate, Actual May Vary.



Tatyana Sturm
720-350-5909
tatyana@exitrealttydc.com
<https://thestorckteam.com>



5032 S Wenatchee Circle, Aurora, CO 80015 – All Levels



Estimated areas

GLA FLOOR 1: 783 sq. ft, excluded 592 sq. ft
GLA FLOOR 2: 1174 sq. ft, excluded 0 sq. ft
Total GLA 1957 sq. ft, total scanned area 2549 sq. ft

SIZES AND DIMENSIONS ARE APPROXIMATE, ACTUAL MAY VARY.



Disclaimer: Sizes and Dimensions are Approximate, Actual May Vary.



Tatyana Sturm
720-350-5909
tatyana@exitrealtydtc.com
<https://thestorckteam.com>



Scan code
for more
property
details

