



7620 Oasis Drive  
 Castle Rock, CO 80108  
 COMMUNITY: Cobblestone Ranch

MLS # 2400752  
 PRICE \$775,000



Single Family



4141 SQFT



5 Beds



3/1 Baths



3 Car



0.17 Acre

## PROPERTY DETAILS

LOCATION & VIEWS! This well-located home backs up to the permanent 1,224 acre Hidden Mesa Open Space. Enjoy the expansive open space views from your patio, sunroom, living area and master bedroom. The open floorplan makes it easy to entertain and the home impresses at every turn. Large windows showcase the amazing views, beautiful wood floors throughout, large bedrooms, secluded home office and a gourmet kitchen will impress. The kitchen includes stainless steel appliance and a walk-in dream pantry. Enjoy the breathtaking view from the master bedroom, its upgraded bathroom and the walk-in closet. The home office provides a secluded refuge for conference calls and remote work. The finished basement includes a 5th bedroom, bathroom, entertainment room, and home gym. The unfinished portion provides ample storage! Enjoy the many upgrades, including coffered ceilings in the master, hand-scraped wood floors, 8 foot doors, oversized 3-car garage, stone fireplace, built-in BBQ, and granite and corian counters, to name a few. Well located being just a short walk to the community center/pool as well as to the trail head entrance to Hidden Mesa. This meticulously maintained home has so many amenities within walking distance, yet maintains total peace and privacy with the fenced back yard and no backyard neighbors! Check out the virtual tour, floor plans and 360 Panos at: <https://v1tours.com/listing/41134>



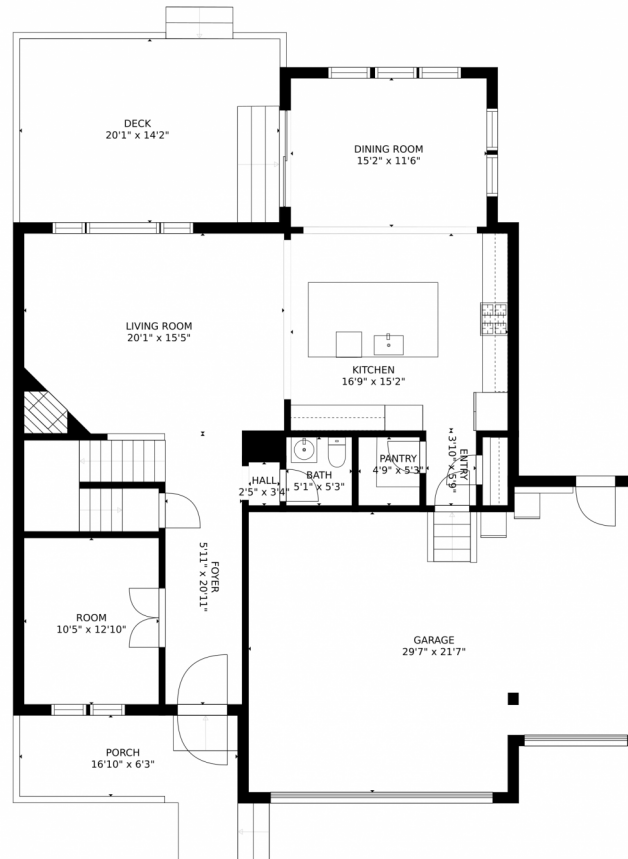
**Michael Sparks**  
 615-618-7146  
 michaelsparks@yourcastle.com



Scan code  
 for more  
 property  
 details



# 7620 Oasis Drive, Castle Rock, CO 80108 – Main Level



### Estimated areas

GLA FLOOR 1: 0 sq. ft, excluded 1283 sq. ft.  
GLA FLOOR 2: 1355 sq. ft, excluded 1087 sq. ft.  
GLA FLOOR 3: 1510 sq. ft, excluded 0 sq. ft.  
Total GLA 2865 sq. ft, total scanned area 5235 sq. ft.

SIZES AND DIMENSIONS ARE APPROXIMATE, ACTUAL MAY VARY.



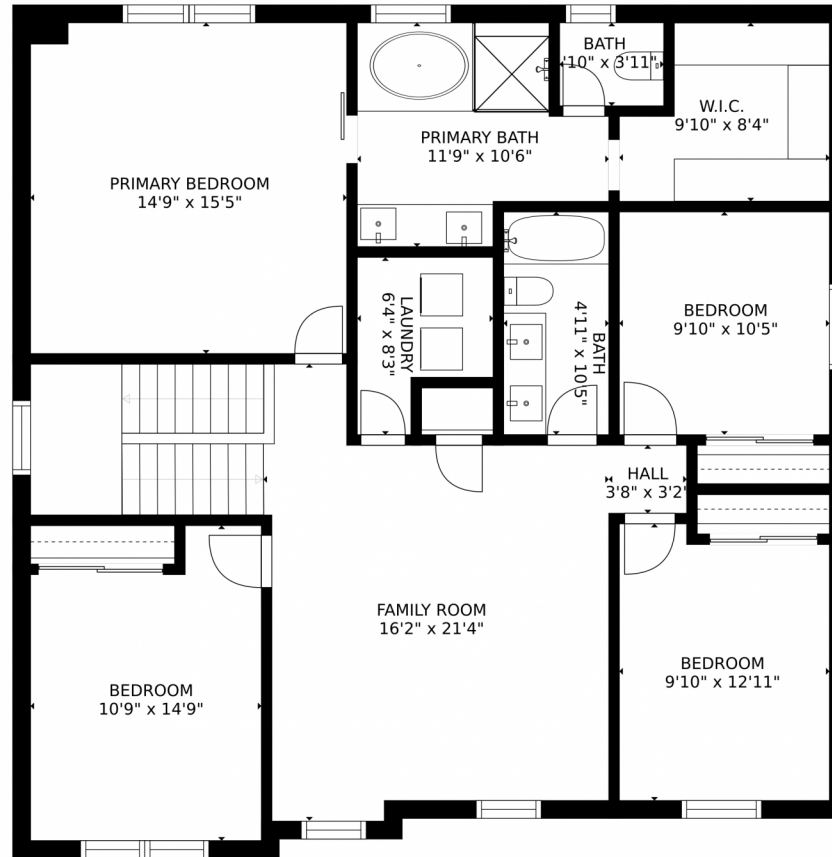
Disclaimer: Sizes and Dimensions are Approximate, Actual May Vary.



**Michael Sparks**  
615-618-7146  
michaelsparks@yourcastle.com



# 7620 Oasis Drive, Castle Rock, CO 80108 – Upper Level



### Estimated areas

GLA FLOOR 1: 0 sq. ft., excluded 1283 sq. ft.  
GLA FLOOR 2: 1355 sq. ft., excluded 1087 sq. ft.  
GLA FLOOR 3: 1510 sq. ft., excluded 0 sq. ft.  
Total GLA 2865 sq. ft., total scanned area 5235 sq. ft.

SIZES AND DIMENSIONS ARE APPROXIMATE, ACTUAL MAY VARY.



Disclaimer: Sizes and Dimensions are Approximate, Actual May Vary.



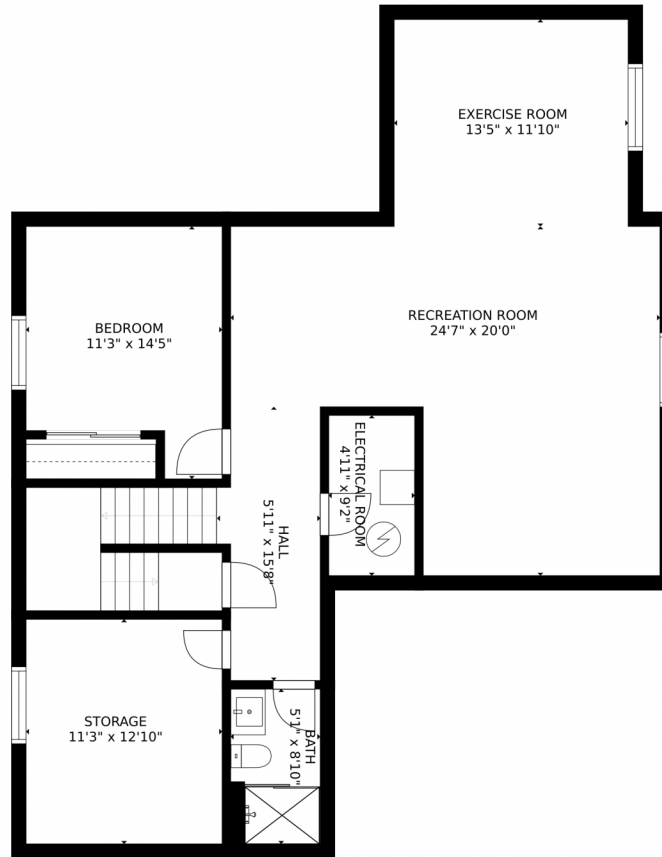
**Michael Sparks**  
615-618-7146  
michaelsparks@yourcastle.com



Scan code  
for more  
property  
details



# 7620 Oasis Drive, Castle Rock, CO 80108 – Lower Level



### Estimated areas

GLA FLOOR 1: 0 sq. ft., excluded 1283 sq. ft.  
GLA FLOOR 2: 1355 sq. ft., excluded 1087 sq. ft.  
GLA FLOOR 3: 1510 sq. ft., excluded 0 sq. ft.  
Total GLA 2865 sq. ft., total scanned area 5235 sq. ft.

SIZES AND DIMENSIONS ARE APPROXIMATE, ACTUAL MAY VARY.



Disclaimer: Sizes and Dimensions are Approximate, Actual May Vary.



**Michael Sparks**  
615-618-7146  
michaelsparks@yourcastle.com

