



Condominium



1884 SQFT



3 Beds



2/1 Baths



Rachael Barach

954-815-1418

rachael@rachaelbarach.com

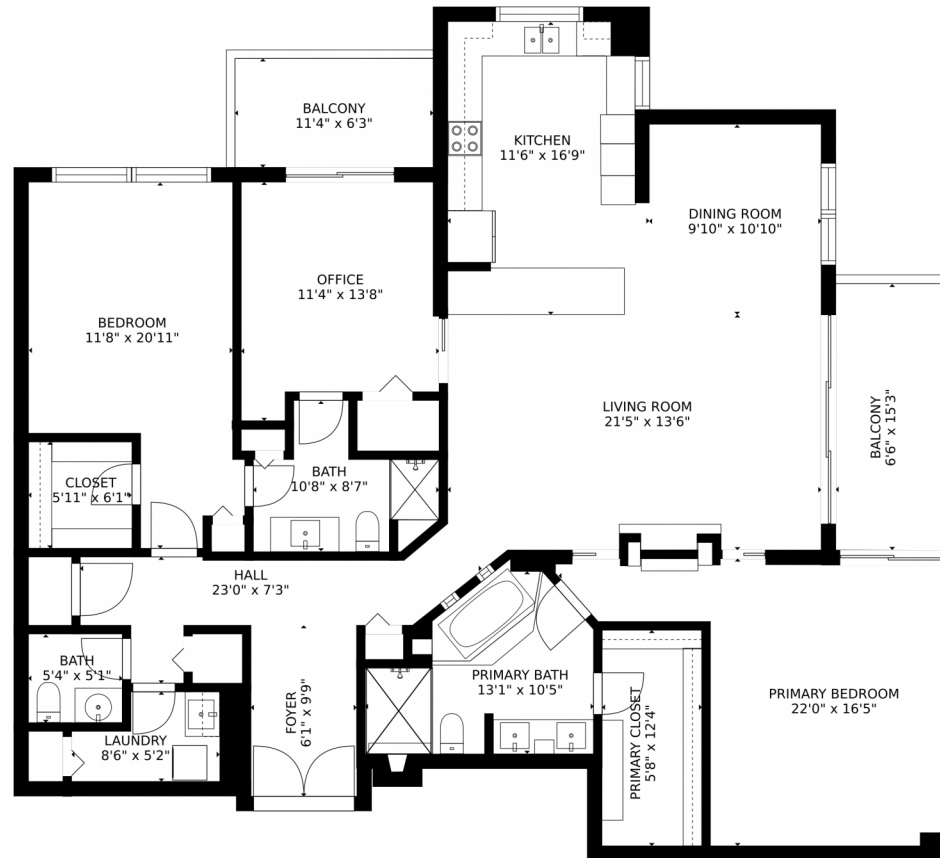
<https://www.therachaelbarachgroup.com/>



Scan code
for more
property
details



2900 Northeast 14th Street, Pompano Beach, FL 33062 – All Levels



Estimated areas
GLA FLOOR 1: 2009 sq. ft, excluded 170 sq. ft
Total GLA 2009 sq. ft, total scanned area 2179 sq. ft

SIZES AND DIMENSIONS ARE APPROXIMATE, ACTUAL MAY VARY.



Disclaimer: Sizes and Dimensions are Approximate, Actual May Vary.



Rachael Barach
954-815-1418
rachael@rachaelbarach.com
<https://www.therachaelbarachgroup.com/>



Scan code
for more
property
details

