


5146 Perth Court  
Denver, CO 80249



 Single Family

 3192 SQFT

 5 Beds

 3 Baths

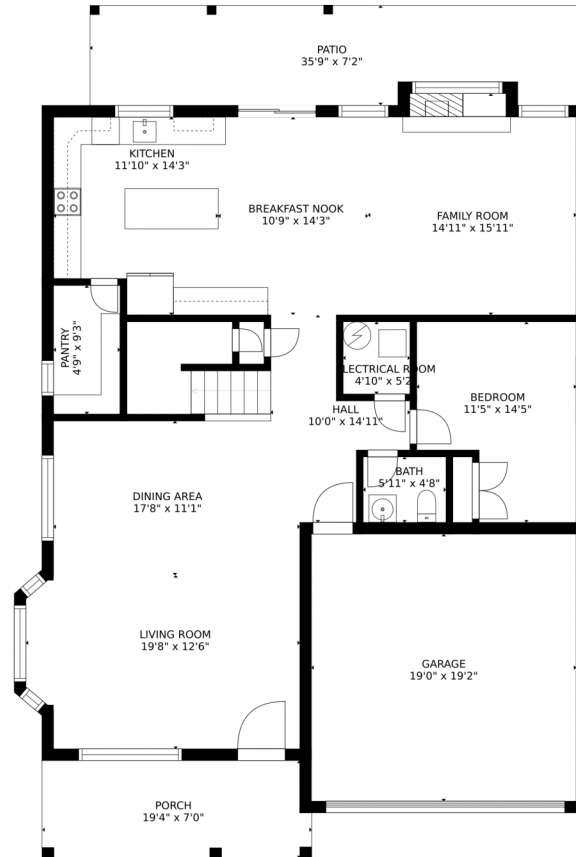
 2 Car



Nathan Stroobants  
303-242-0059  
nstrooba@gmail.com



# 5146 Perth Court, Denver, CO 80249 – Main Level



### Estimated areas

GLA FLOOR 1: 1528 sq. ft, excluded 800 sq. ft  
GLA FLOOR 2: 1844 sq. ft, excluded 0 sq. ft  
Total GLA 3372 sq. ft, total scanned area 4172 sq. ft

SIZES AND DIMENSIONS ARE APPROXIMATE, ACTUAL MAY VARY.

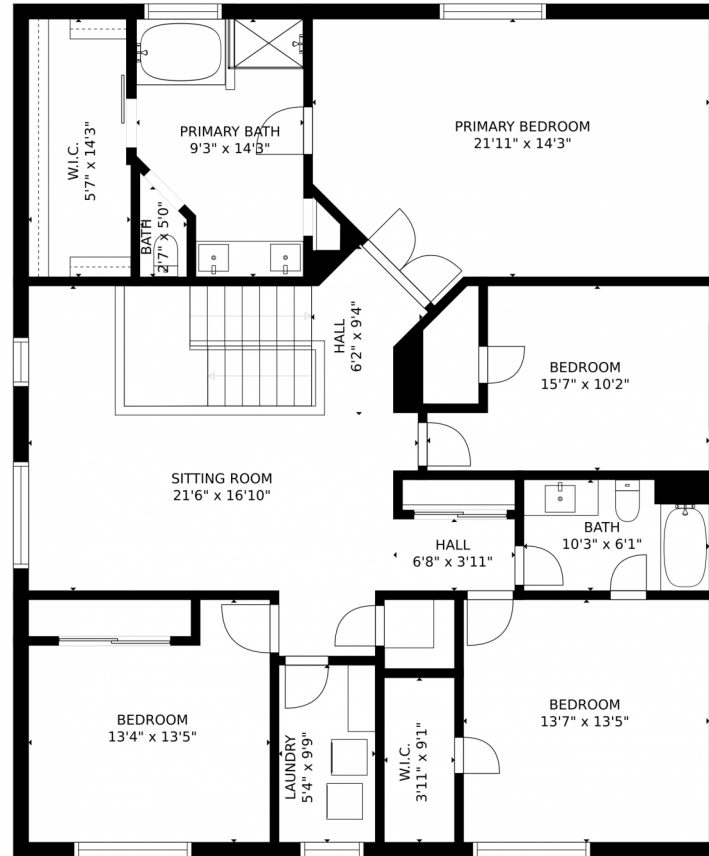


Disclaimer: Sizes and Dimensions are Approximate, Actual May Vary.

Nathan Stroobants  
303-242-0059  
nstrooba@gmail.com



# 5146 Perth Court, Denver, CO 80249 – Upper Level



### Estimated areas

GLA FLOOR 1: 1528 sq. ft, excluded 800 sq. ft  
GLA FLOOR 2: 1844 sq. ft, excluded 0 sq. ft  
Total GLA 3372 sq. ft, total scanned area 4172 sq. ft

SIZES AND DIMENSIONS ARE APPROXIMATE, ACTUAL MAY VARY.

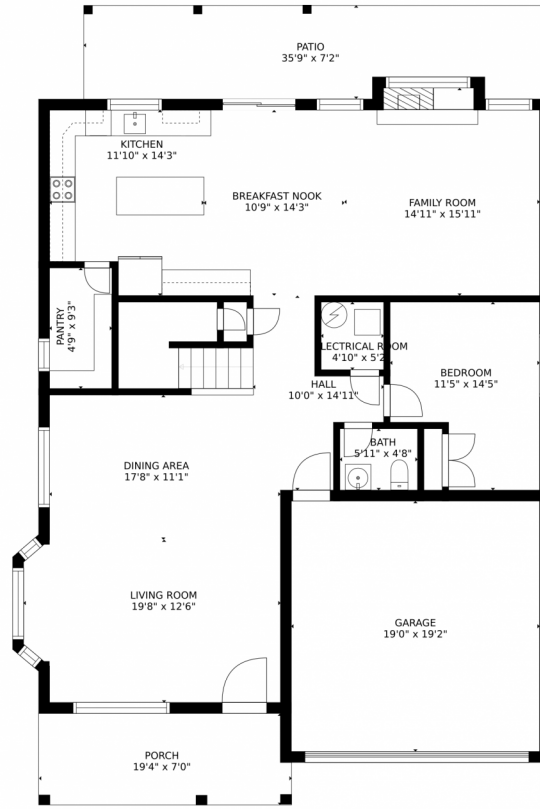


Disclaimer: Sizes and Dimensions are Approximate, Actual May Vary.

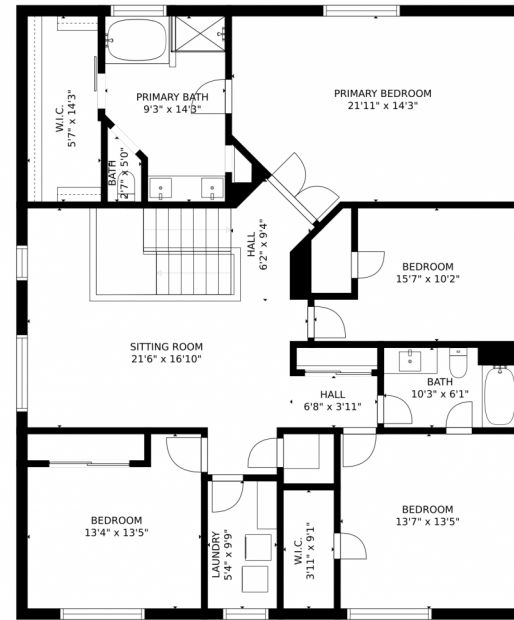
Nathan Stroobants  
303-242-0059  
nstrooba@gmail.com



# 5146 Perth Court, Denver, CO 80249 – All Levels



FLOOR 1



FLOOR 2

### Estimated areas

GLA FLOOR 1: 1528 sq. ft, excluded 800 sq. ft  
GLA FLOOR 2: 1844 sq. ft, excluded 0 sq. ft  
Total GLA 3372 sq. ft, total scanned area 4172 sq. ft

SIZES AND DIMENSIONS ARE APPROXIMATE, ACTUAL MAY VARY.



Disclaimer: Sizes and Dimensions are Approximate, Actual May Vary.

Nathan Stroobants  
303-242-0059  
nstrooba@gmail.com

