

Single Family



2583 SQFT



**Taylor Haas**

303-665-7368

taylorh@coloradorpm.com

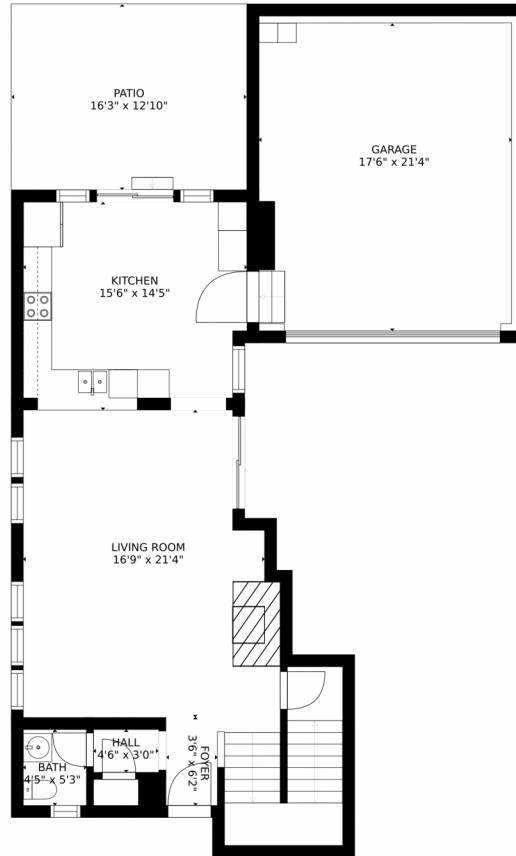
<https://www.coloradorpm.com/available-rental-properties-denver>



Scan code  
for more  
property  
details



# 6506 Sunny Meadow Street, Colorado Springs, CO 80923 – Main Level



### Estimated areas

GLA FLOOR 1: 0 sq. ft., excluded 769 sq. ft.  
GLA FLOOR 2: 837 sq. ft., excluded 665 sq. ft.  
GLA FLOOR 3: 1430 sq. ft., excluded 0 sq. ft.  
Total GLA 2287 sq. ft., total scanned area 3721 sq. ft.

SIZES AND DIMENSIONS ARE APPROXIMATE, ACTUAL MAY VARY.



Disclaimer: Sizes and Dimensions are Approximate, Actual May Vary.



**Taylor Haas**

303-665-7368

taylorh@coloradorpm.com

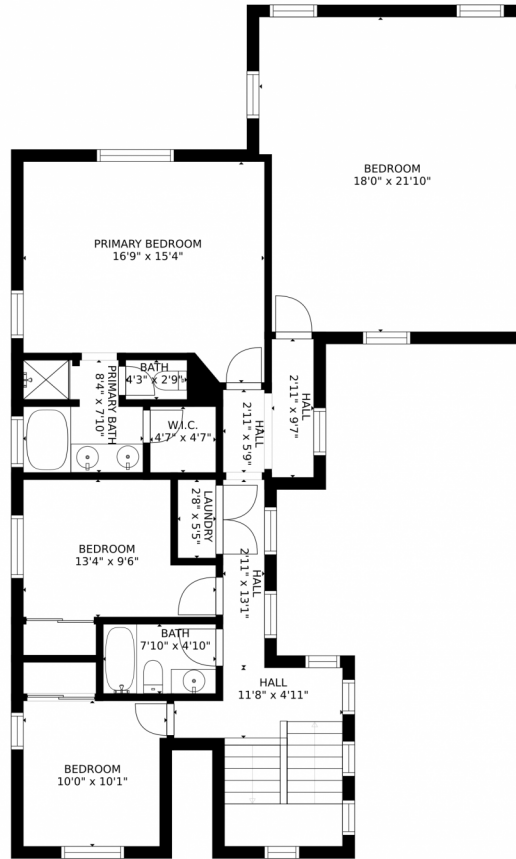
<https://www.coloradorpm.com/available-rental-properties-denver>



Scan code  
for more  
property  
details



# 6506 Sunny Meadow Street, Colorado Springs, CO 80923 – Upper Level



### Estimated areas

GLA FLOOR 1: 0 sq. ft., excluded 769 sq. ft.  
GLA FLOOR 2: 837 sq. ft., excluded 665 sq. ft.  
GLA FLOOR 3: 1430 sq. ft., excluded 0 sq. ft.  
Total GLA 2287 sq. ft., total scanned area 3721 sq. ft.

SIZES AND DIMENSIONS ARE APPROXIMATE, ACTUAL MAY VARY.



Disclaimer: Sizes and Dimensions are Approximate, Actual May Vary.



**Taylor Haas**

303-665-7368

taylorh@coloradorpm.com

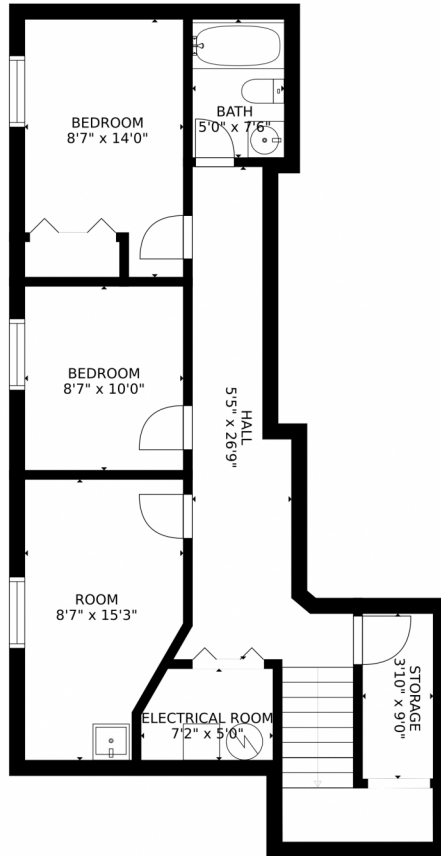
<https://www.coloradorpm.com/available-rental-properties-denver>



Scan code  
for more  
property  
details



# 6506 Sunny Meadow Street, Colorado Springs, CO 80923 – Lower Level



### Estimated areas

GLA FLOOR 1: 0 sq. ft., excluded 769 sq. ft.  
GLA FLOOR 2: 837 sq. ft., excluded 665 sq. ft.  
GLA FLOOR 3: 1430 sq. ft., excluded 0 sq. ft.  
Total GLA 2287 sq. ft., total scanned area 3721 sq. ft.

SIZES AND DIMENSIONS ARE APPROXIMATE, ACTUAL MAY VARY.



Disclaimer: Sizes and Dimensions are Approximate, Actual May Vary.



**Taylor Haas**

303-665-7368

taylorh@coloradorpm.com

<https://www.coloradorpm.com/available-rental-properties-denver>



Scan code  
for more  
property  
details



# 6506 Sunny Meadow Street, Colorado Springs, CO 80923 – All Levels



### Estimated areas

GLA FLOOR 1: 0 sq. ft. excluded 769 sq. ft.  
GLA FLOOR 2: 837 sq. ft. excluded 665 sq. ft.  
GLA FLOOR 3: 1430 sq. ft. excluded 0 sq. ft.  
Total GLA 2287 sq. ft. total scanned area 3721 sq. ft.

SIZES AND DIMENSIONS ARE APPROXIMATE, ACTUAL MAY VARY.



Disclaimer: Sizes and Dimensions are Approximate, Actual May Vary.



**Taylor Haas**

303-665-7368

taylorh@coloradorpm.com

<https://www.coloradorpm.com/available-rental-properties-denver>



Scan code  
for more  
property  
details

