



10264 Vestal Mnr
 Coral Springs, FL 33071
 COMMUNITY: Maplewood

MLS
 # F10327600
 PRICE
 \$1,375,000



Single Family 6 Beds 5/1 Baths 3 Car 0.43 Acre

PROPERTY DETAILS

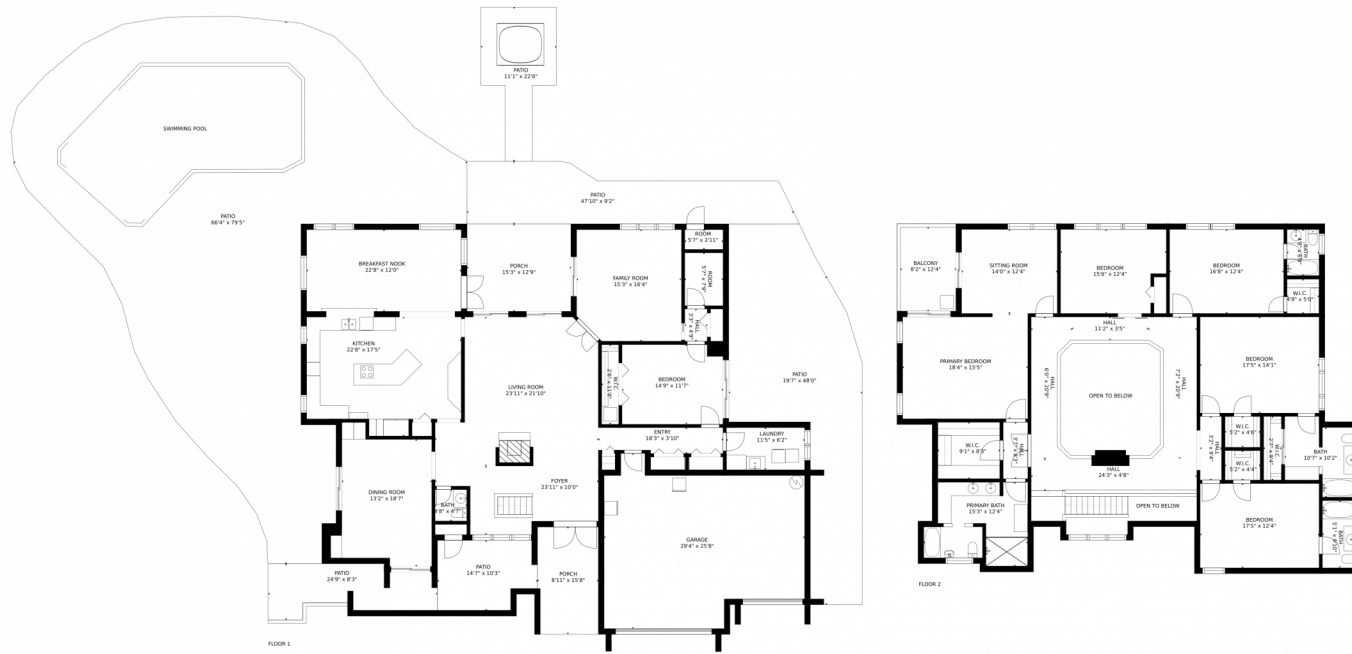
Beyond the manned gates of this quiet little community are tree-lined streets leading you to this 2-story, landscaped home on a beautiful canal-backed 1/2 acre. A few finishing touches can make this a polished gem. With 6 bedrooms, 5 having an en suite bthrm and a bedroom on the first floor, this home can be configured to your taste and needs. MBR has large adjoining room and balcony overlooking the water views. Vaulted ceilings, with wood beam details are gorgeous! Big pool in the back. Great space for entertaining as well. This house will not last! Plenty of parking on driveway and cul-de-sac. Call listing agent for showings. Highest and best offers only!



Ashlee Kilayko
 954-551-2475
 ashleeduplin@gmail.com



10264 Vestal Mnr, Coral Springs, FL 33071 – All Floors



Estimated areas
 GLA FLOOR 1: 2570 sq. ft, excluded 8175 sq. ft
 GLA FLOOR 2: 2651 sq. ft, excluded 428 sq. ft
 Total GLA 5221 sq. ft, total scanned area 13824 sq. ft

SIZES AND DIMENSIONS ARE APPROXIMATE, ACTUAL MAY VARY.



Disclaimer: Sizes and Dimensions are Approximate, Actual May Vary.



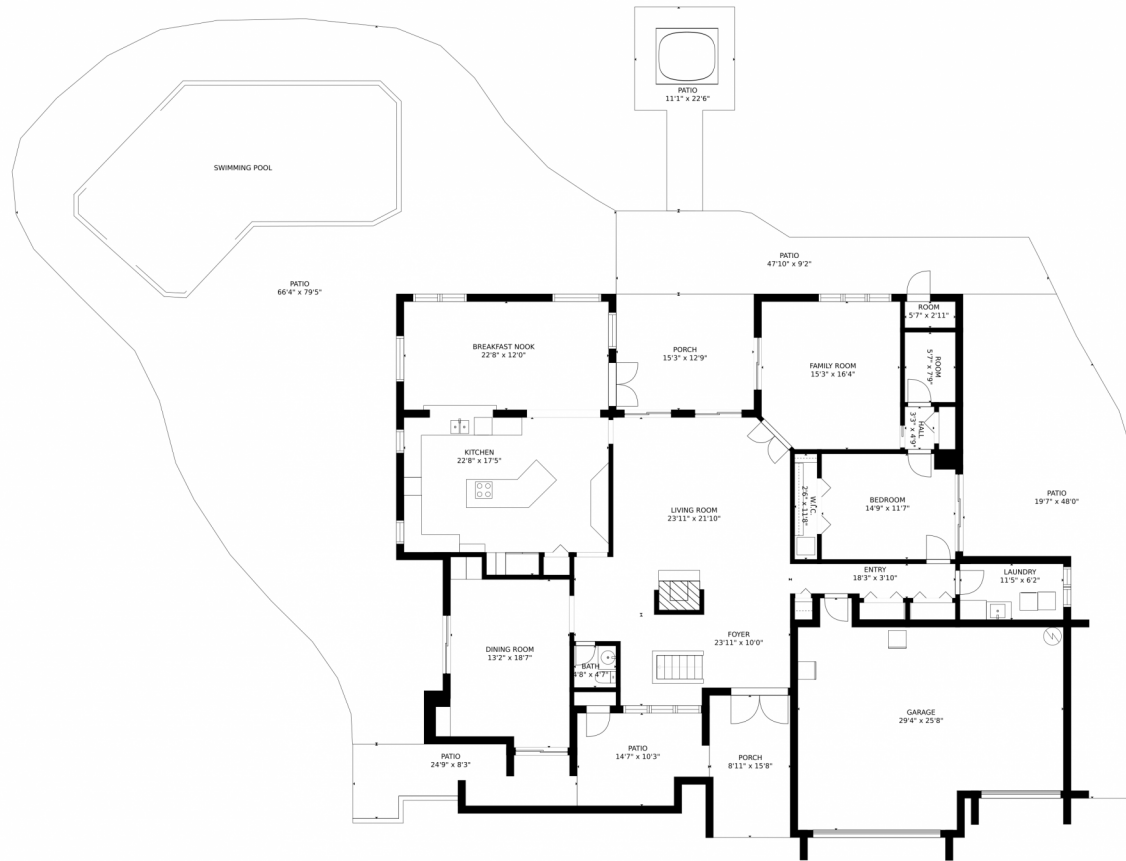
Ashlee Kilayko
 954-551-2475
 ashleeduplin@gmail.com



Scan code for more property details



10264 Vestal Mnr, Coral Springs, FL 33071 – First Floor



Estimated areas

GLA FLOOR 1: 2570 sq. ft, excluded 8175 sq. ft
GLA FLOOR 2: 2651 sq. ft, excluded 428 sq. ft
Total GLA 5221 sq. ft, total scanned area 13824 sq. ft

SIZES AND DIMENSIONS ARE APPROXIMATE, ACTUAL MAY VARY.



Disclaimer: Sizes and Dimensions are Approximate, Actual May Vary.



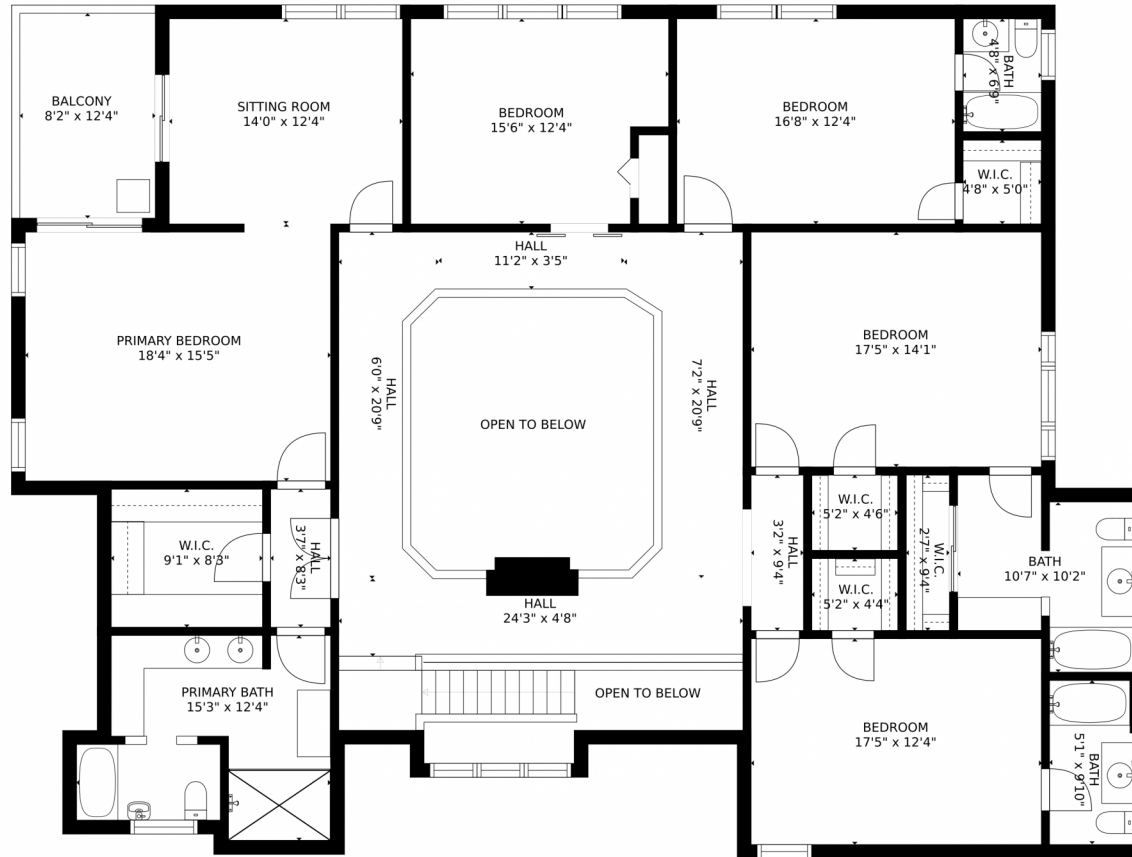
Ashlee Kilayko
954-551-2475
ashleeduplin@gmail.com



Scan code
for more
property
details



10264 Vestal Mnr, Coral Springs, FL 33071 – 2nd Floor



Estimated areas

GLA FLOOR 1: 2570 sq. ft, excluded 8175 sq. ft
GLA FLOOR 2: 2651 sq. ft, excluded 428 sq. ft
Total GLA 5221 sq. ft, total scanned area 13824 sq. ft

SIZES AND DIMENSIONS ARE APPROXIMATE, ACTUAL MAY VARY.



Disclaimer: Sizes and Dimensions are Approximate, Actual May Vary.



Ashlee Kilayko
954-551-2475
ashleeduplin@gmail.com

