



1122 S Joplin Street
Aurora, CO 80017
COMMUNITY: Brookvale

MLS # 2253256
PRICE \$575,000



Single Family



3022 SQFT



4 Beds



2/2 Baths



2 Car



0.21 Acre

PROPERTY DETAILS

This home has been lovingly and thoughtfully updated recently, starting with the basement in 2018 boasting a custom bar area along with a beautifully remastered bathroom and laundry suite. On the main level the kitchen has been refreshed to include a built in breakfast bar with granite countertops, refinished hardwoods that carry you throughout much of the main level, newer paint, and is nicely finished by an updated main level bathroom featuring brand new countertop and paint along with newer faux wood tile flooring. The family room has also been updated by a new modern fireplace surround and can lighting. Next venture upstairs byway of the upgraded staircase showcasing beautiful wood stairs and modern balusters. All of the upper level carpet was installed just last year along with a recently fully remodeled guest bathroom. The owner's suite is complete with a fully renewed bathroom as well featuring modern and stylish barn door entry along with a new vanity shower surround and custom shower doors, nicely finished with heated tile flooring and all new fixtures. You will love living in Brookvale as every lifestyle convenience is just minutes away including The Aurora Mall for endless shopping at all of your favorite stores along with additional shopping and dining at the Aurora City Place offering many eateries and additional choice retail options. Rocky Ridge Park is also within walking distance to your new home offering a playground and tons of open



Tatyana Sturm

720-350-5909

tatyana@exitrealttydtc.com

<https://thestorckteam.com>



Scan code
for more
property
details



space along with the Highline Canal trail literally across the street leading you into Denver and beyond. The Aurora City Center Park is also a short drive where you can enjoy a multitude of community events from their 4th of July Fireworks display to live music during the Summertime along with Art in the Park. Arrive anywhere your heart desires in the Denver Metro area within minutes as Highway 225 is just a couple blocks away making your commute a breeze whether you are headed Downtown or into the Denver Tech Center.



Tatyana Sturm

720-350-5909

tatyana@exitrealtydtc.com

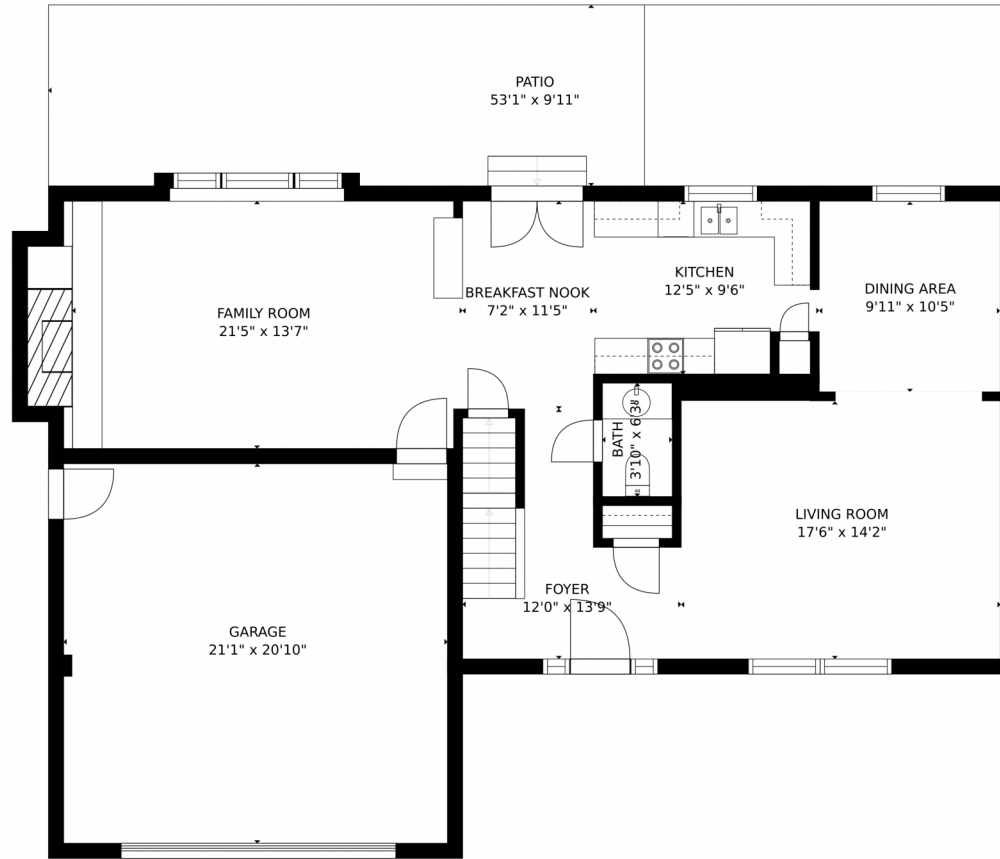
<https://thestorckteam.com>



Scan code
for more
property
details



1122 S Joplin Street, Aurora, CO 80017 – Main Level



Estimated areas

GLA FLOOR 1: 0 sq. ft, excluded 808 sq. ft.
GLA FLOOR 2: 1198 sq. ft, excluded 1902 sq. ft.
GLA FLOOR 3: 1208 sq. ft, excluded 0 sq. ft.
Total GLA 2406 sq. ft, total scanned area 4216 sq. ft.

SIZES AND DIMENSIONS ARE APPROXIMATE, ACTUAL MAY VARY.



Disclaimer: Sizes and Dimensions are Approximate, Actual May Vary.



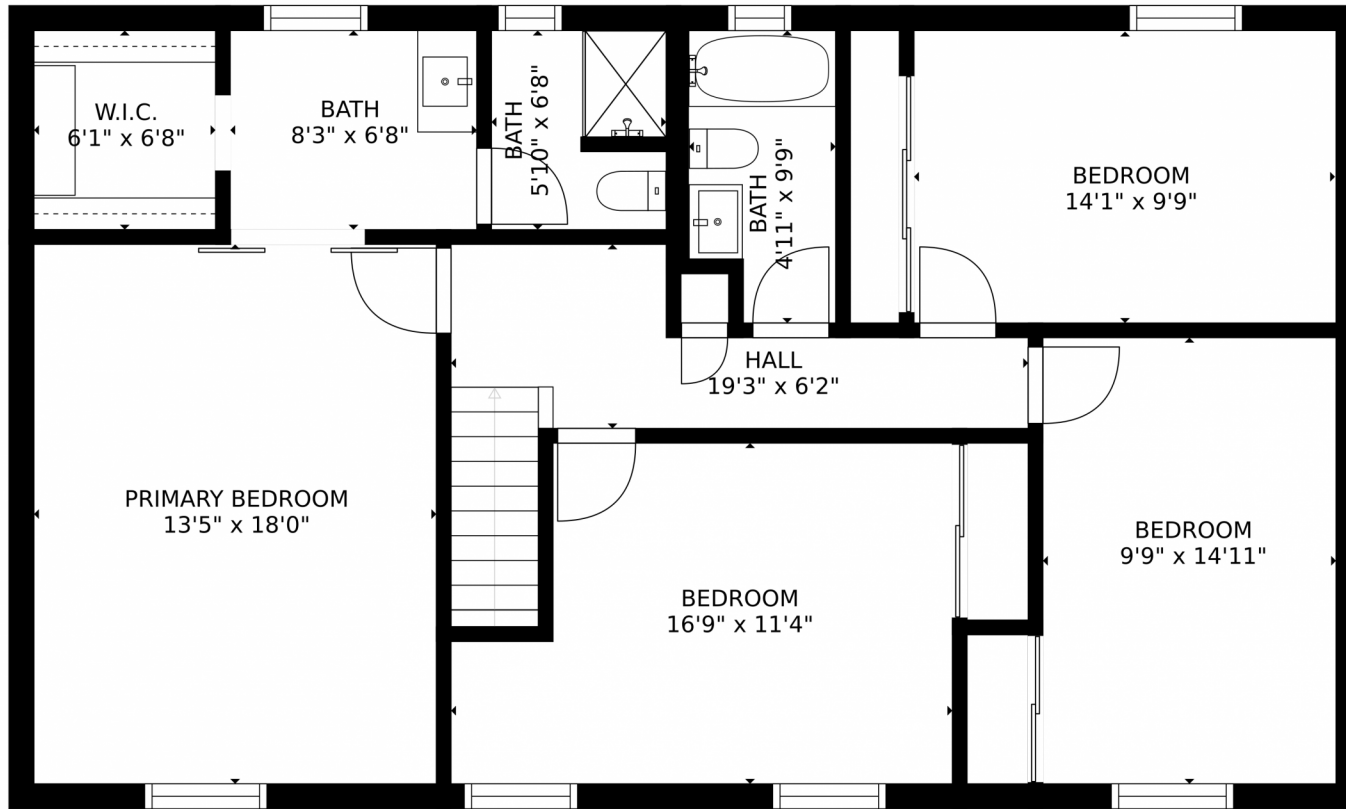
Tatyana Sturm
720-350-5909
tatyana@exitrealtydtc.com
<https://thestorckteam.com>



Scan code
for more
property
details



1122 S Joplin Street, Aurora, CO 80017 – Second Level



Estimated areas

GLA FLOOR 1: 0 sq. ft, excluded 808 sq. ft.
GLA FLOOR 2: 1198 sq. ft, excluded 1902 sq. ft.
GLA FLOOR 3: 1208 sq. ft, excluded 0 sq. ft.
Total GLA 2406 sq. ft, total scanned area 4216 sq. ft.

SIZES AND DIMENSIONS ARE APPROXIMATE, ACTUAL MAY VARY.



Disclaimer: Sizes and Dimensions are Approximate, Actual May Vary.

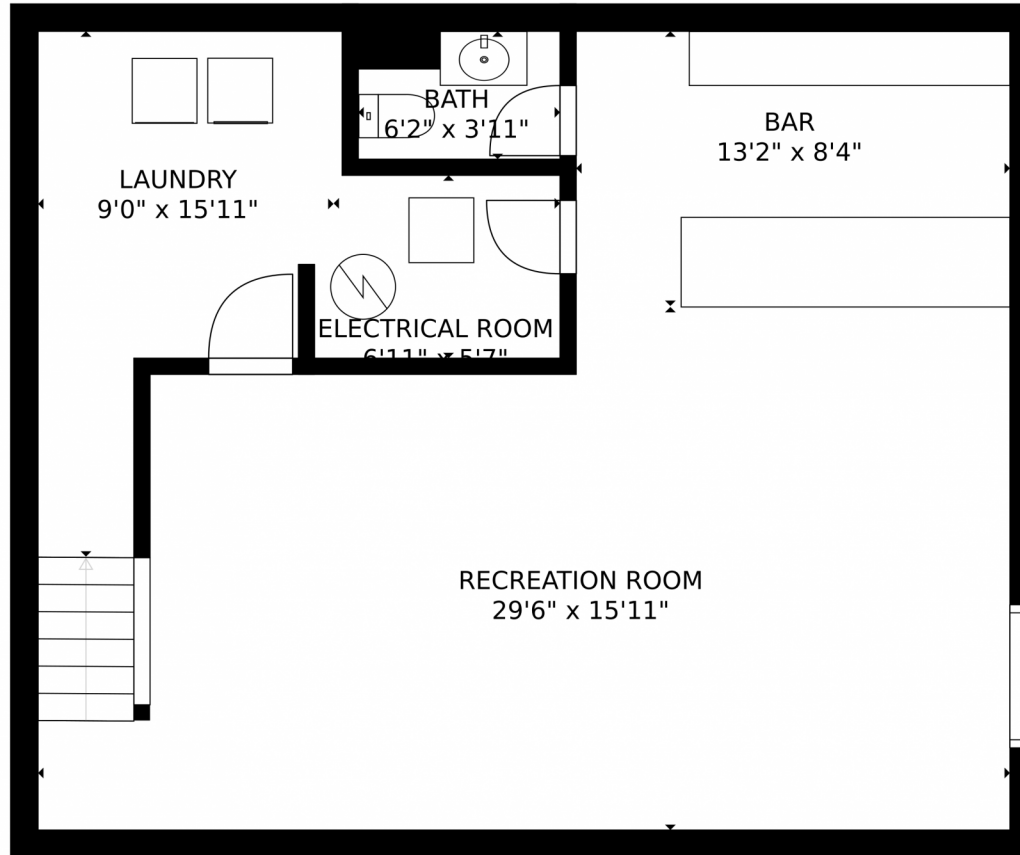


Tatyana Sturm
720-350-5909
tatyana@exitrealtydtc.com
<https://thestorckteam.com>



Scan code
for more
property
details





Estimated areas

GLA FLOOR 1: 0 sq. ft, excluded 808 sq. ft
GLA FLOOR 2: 1198 sq. ft, excluded 1902 sq. ft
GLA FLOOR 3: 1208 sq. ft, excluded 0 sq. ft
Total GLA 2406 sq. ft, total scanned area 4216 sq. ft

SIZES AND DIMENSIONS ARE APPROXIMATE, ACTUAL MAY VARY.



Disclaimer: Sizes and Dimensions are Approximate, Actual May Vary.



Tatyana Sturm
720-350-5909
tatyana@exitrealtydtc.com
<https://thestorckteam.com>



Scan code
for more
property
details

1122 S Joplin Street, Aurora, CO 80017 – All Levels



Estimated areas

GLA FLOOR 1: 0 sq. ft, excluded 808 sq. ft
GLA FLOOR 2: 1198 sq. ft, excluded 1002 sq. ft
GLA FLOOR 3: 1208 sq. ft, excluded 0 sq. ft
Total GLA 2406 sq. ft, total scanned area 4216 sq. ft

SIZES AND DIMENSIONS ARE APPROXIMATE, ACTUAL MAY VARY.



Disclaimer: Sizes and Dimensions are Approximate, Actual May Vary.



Tatyana Sturm
720-350-5909
tatyana@exitrealtydtc.com
<https://thestorckteam.com>



Scan code
for more
property
details

