

FANTASTIC OPPORTUNITY CLOSE TO SLOAN'S LAKE!!



 Single Family
  624 SQFT
  2 Beds
  1 Baths
  4 Car
  0.11 Acre

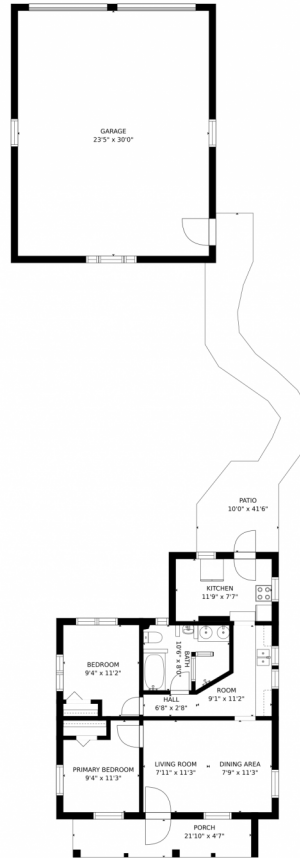
PROPERTY DETAILS

OPPORTUNITY AWAITS WITH THIS GREAT RANCH IN HOT LOCATION CLOSE TO SLOAN'S LAKE!!! STEP INSIDE THIS CUTE HOME THAT IS READY FOR MOVE-IN WITH TONS OF POSSIBILITIES TO MAKE YOUR OWN. FEATURES INCLUDE 2 BEDROOMS, REMODELED CUSTOM BATHROOM, AND BIG YARD WITH HUGE 720SF DETACHED GARAGE!! NEWER WINDOWS, NEWER PAINT, LIGHT, BRIGHT AND OPEN THROUGHOUT. CLOSE TO EDGEWATER MARKETPLACE, SLOANS LAKE, SHOPPING, HIGHWAY ACCESS AND MORE! PLEASE SUBMIT HIGHEST AND BEST OFFERS (NO ESCALATION CLAUSES) BY END OF DAY MONDAY MAY 2ND WITH AN ACCEPTANCE DEADLINE OF TUESDAY MAY 3RD AT 10PM. SELLER RESERVES THE RIGHT TO ACCEPT AN OFFER AT AN EARLIER DATE AND TIME. HOME IS BEING SOLD AS IS. BUYER/BROKER TO VERIFY ALL INFO. LISTING AGENT RELATED TO SELLER. PROPERTY NEXT DOOR AT 2838 DEPEW ST IS ALSO FOR SALE MLS#7264599 LISTED FOR \$485,000.



Denise Cox
303-931-4828
denise@mscadvisors.com



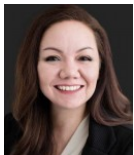


Estimated areas
GLA FLOOR 1: 774 sq. ft, excluded 1143 sq. ft
Total GLA 774 sq. ft, total scanned area 1917 sq. ft

SIZES AND DIMENSIONS ARE APPROXIMATE, ACTUAL MAY VARY.



Disclaimer: Sizes and Dimensions are Approximate, Actual May Vary.



Denise Cox
303-931-4828
denise@mscadvisors.com

