



Single Family



5840 SQFT



6 Beds



4/1 Baths



3 Car



2.59 Acre

PROPERTY DETAILS

This home is light and bright and it is just under 6000 square feet. It sits on a beautiful 2 1/2 acre lot that has gorgeous mountain views of Pikes Peak. The home offers main level living. The master bedroom is located on the main floor with an attached office or exercise room and the master bathroom has two vanities, a soaking tub, a walk in shower, and a large walk in closet. The main level also features a living room with a gas, stone, fireplace and vaulted ceilings, a gourmet kitchen with two pantries and a wet bar conveniently located between the kitchen and the separate dining room. The laundry room has plenty of storage and counter space. The backyard is off the kitchen, is fully landscaped, and faces north. So you will have plenty of shade in the summer time. The upstairs consists of three good size bedrooms. Two of the bedrooms are joined by a Jack and Jill full bathroom. And the 3rd bedroom has its own ensuite and a walk in closet. The walk out basement has a wet bar, a large family room with a gas fireplace, two bedrooms, and a full bathroom. One of the bedrooms has built ins and can



Kathy Eaton

719-393-5738

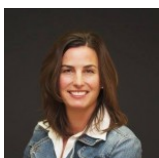
kathyeaton@mac.com

<https://kathy.yourcastle.com>

Scan code
for more
property
details



also be used as an office or maybe a craft room.



Kathy Eaton
719-393-5738
kathyeaton@mac.com
<https://kathy.yourcastle.com>



Scan code
for more
property
details

