



1011 Hoosier Drive
 Larkspur, CO 80118
 COMMUNITY: Sage Port

MLS # 6764333
 PRICE \$950,000



Single Family



4698 SQFT



7 Beds



4 Baths



4 Car



0.98 Acre

PROPERTY DETAILS

Colorado living at its finest. You are sure to enjoy this private one-acre lot with mature pines located in the quiet Sage Port neighborhood close to Bear Dance Golf Club. Wonderful Ranch Style Home with walkout basement. Open floor plan, new luxury vinyl flooring throughout the main level, stone fireplace, main floor master with ensuite & walk-in closet, laundry. Open kitchen with newer stainless appliances & gas range. The dining room is open to the kitchen. On the opposite side of the house from the master suite are 3 additional bedrooms, a full bath, and Jack & Jill full bathroom. Beautiful rear Trex deck to enjoy serene sunsets and abundant wildlife year-round! Expansive walkout basement with a full kitchen, stainless appliances, private entrance, 3 bedrooms, ¾ bath, and large entertaining/living room space. Perfect for multigenerational living. This home has Thrive Broadband Fiber optics for the Internet with speeds up to 2 Gbps. Newly painted interior & exterior. New water heater, whole house fan, and radon mitigation equipment. 4 Car Attached Garage with newly poured concrete floor, new garage doors & 6 overhead storage racks. New lower concrete back patio and sidewalks. Paved driveway & County maintained paved road. Easy Access to I 25, Castle Rock shopping & restaurants only a 12-minute drive.



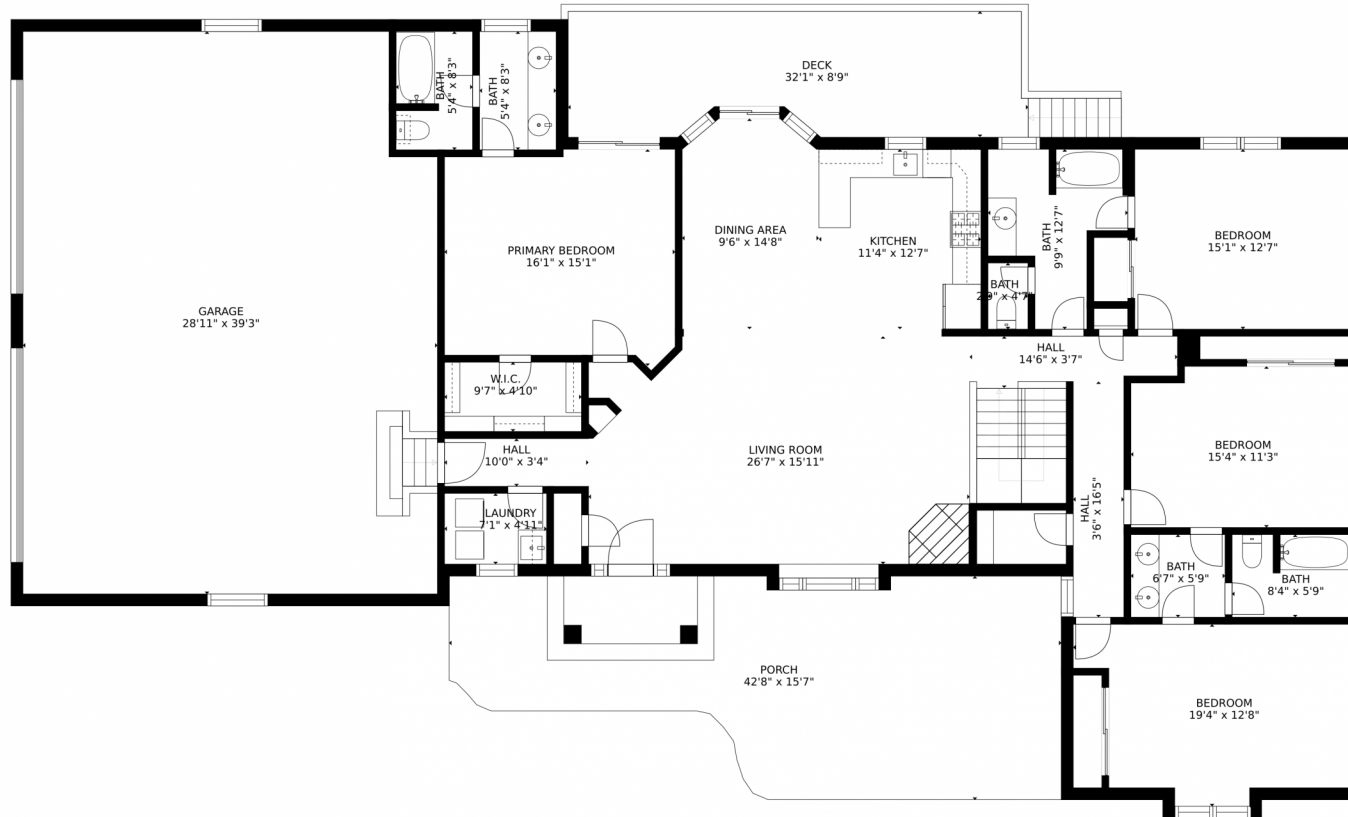
Cindy Rein
 720-272-4890
 cindy@reinrealty.net
<https://www.SherlockHomes.net>



Scan code
 for more
 property
 details



1011 Hoosier Drive, Larkspur, CO 80118 – Main Level



Estimated areas

GLA FLOOR 1: 0 sq. ft, excluded 2628 sq. ft
GLA FLOOR 2: 2442 sq. ft, excluded 3161 sq. ft
Total GLA 2442 sq. ft, total scanned area 8231 sq. ft

SIZES AND DIMENSIONS ARE APPROXIMATE, ACTUAL MAY VARY.



Disclaimer: Sizes and Dimensions are Approximate, Actual May Vary.



Cindy Rein

720-272-4890

cindy@reinrealty.net

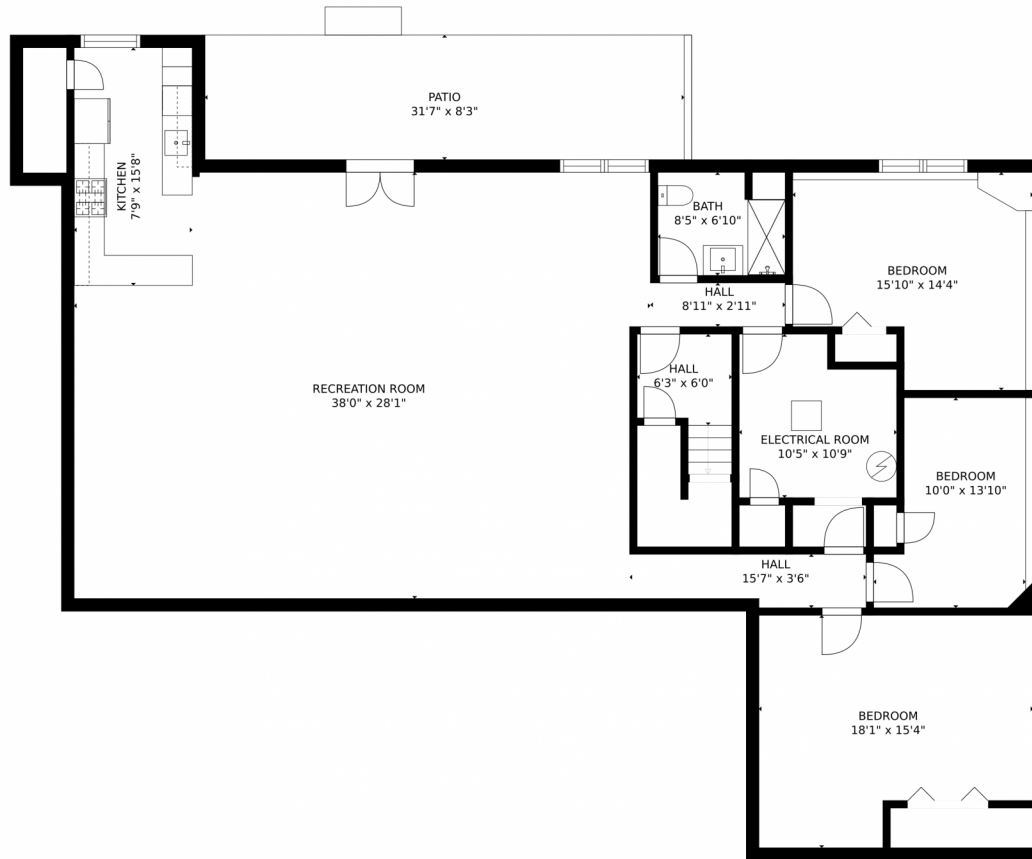
<https://www.SherlockHomes.net>



Scan code
for more
property
details



1011 Hoosier Drive, Larkspur, CO 80118 – Lower Level



Estimated areas

GLA FLOOR 1: 0 sq. ft, excluded 2628 sq. ft
GLA FLOOR 2: 2442 sq. ft, excluded 3161 sq. ft
Total GLA 2442 sq. ft, total scanned area 8231 sq. ft

SIZES AND DIMENSIONS ARE APPROXIMATE, ACTUAL MAY VARY.



Disclaimer: Sizes and Dimensions are Approximate, Actual May Vary.



Cindy Rein

720-272-4890

cindy@reinrealty.net

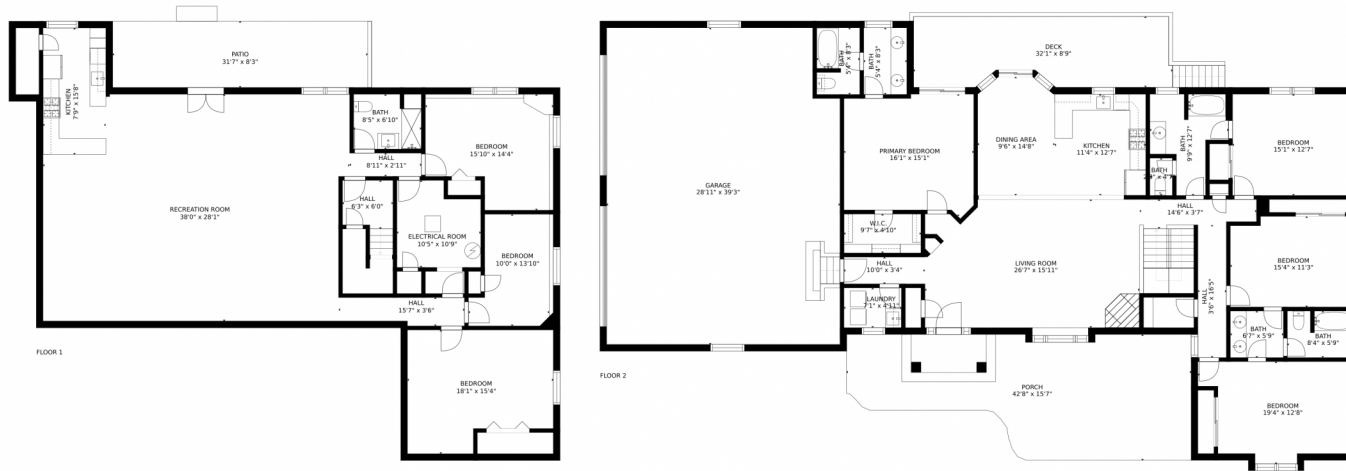
<https://www.SherlockHomes.net>



Scan code
for more
property
details



1011 Hoosier Drive, Larkspur, CO 80118 – All Levels



Estimated areas
GLA FLOOR 1: 0 sq. ft, excluded 2628 sq. ft
GLA FLOOR 2: 2442 sq. ft, excluded 3161 sq. ft
Total GLA 2442 sq. ft, total scanned area 8231 sq. ft
SIZES AND DIMENSIONS ARE APPROXIMATE, ACTUAL MAY VARY.



Disclaimer: Sizes and Dimensions are Approximate, Actual May Vary.



Cindy Rein
720-272-4890
cindy@reinrealty.net
<https://www.SherlockHomes.net>



Scan code
for more
property
details

