



8005 Ponderosa Drive
Parker, CO 80138
COMMUNITY: Ponderosa Hills

MLS # 6067547
PRICE \$730,000



Single Family



2700 SQFT



4 Beds



3 Baths



2 Car



3.73 Acre

PROPERTY DETAILS

3.7+ Acres in Parker, Beautiful landscape with mature trees. Well cared for home with NEW, 30 yr roof and newer Decks, A/C, furnace & water heater. The windows have also been updated and the mountain views are incredible. The Tiny house in the back yard is finished and perfect for guests. And you can entertain all your friends around the fire in your private amphitheater(seats 25 comfortably). Come enjoy the fresh air and open spaces without compromising proximity to work, shopping & entertainment.



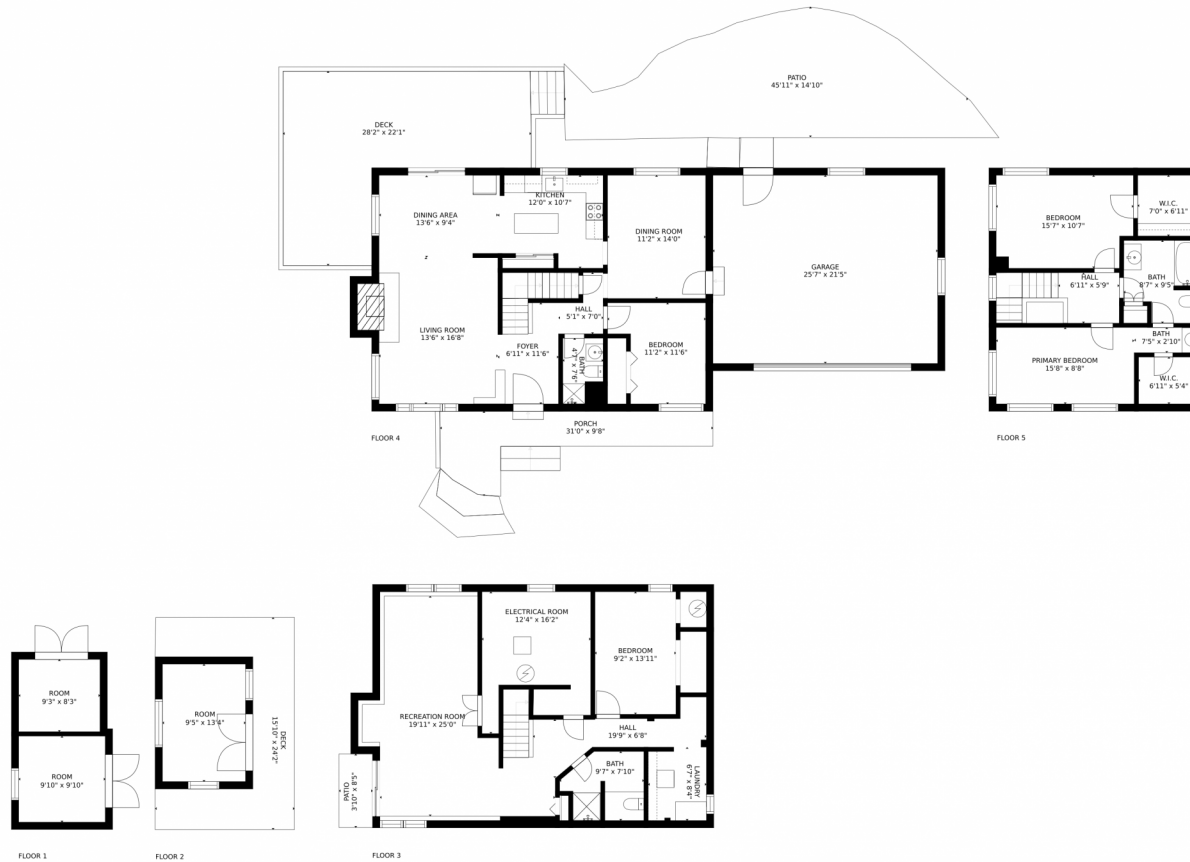
Jaden Combs
303-324-1437
jaden@kentwood.com



Scan code
for more
property
details



8005 Ponderosa Drive, Parker, CO 80138 – All Levels



Estimated areas

GLA FLOOR 1: 0 sq. ft. (excluded 227 sq. ft.)
 GLA FLOOR 2: 0 sq. ft. (excluded 282 sq. ft.)
 GLA FLOOR 3: 1238 sq. ft. (excluded 228 sq. ft.)
 GLA FLOOR 4: 1987 sq. ft. (excluded 1775 sq. ft.)
 GLA FLOOR 5: 688 sq. ft. (excluded 0 sq. ft.)
 Total GLA 2871 sq. ft. total scanned area 5225 sq. ft.

SIZES AND DIMENSIONS ARE APPROXIMATE, ACTUAL MAY VARY.



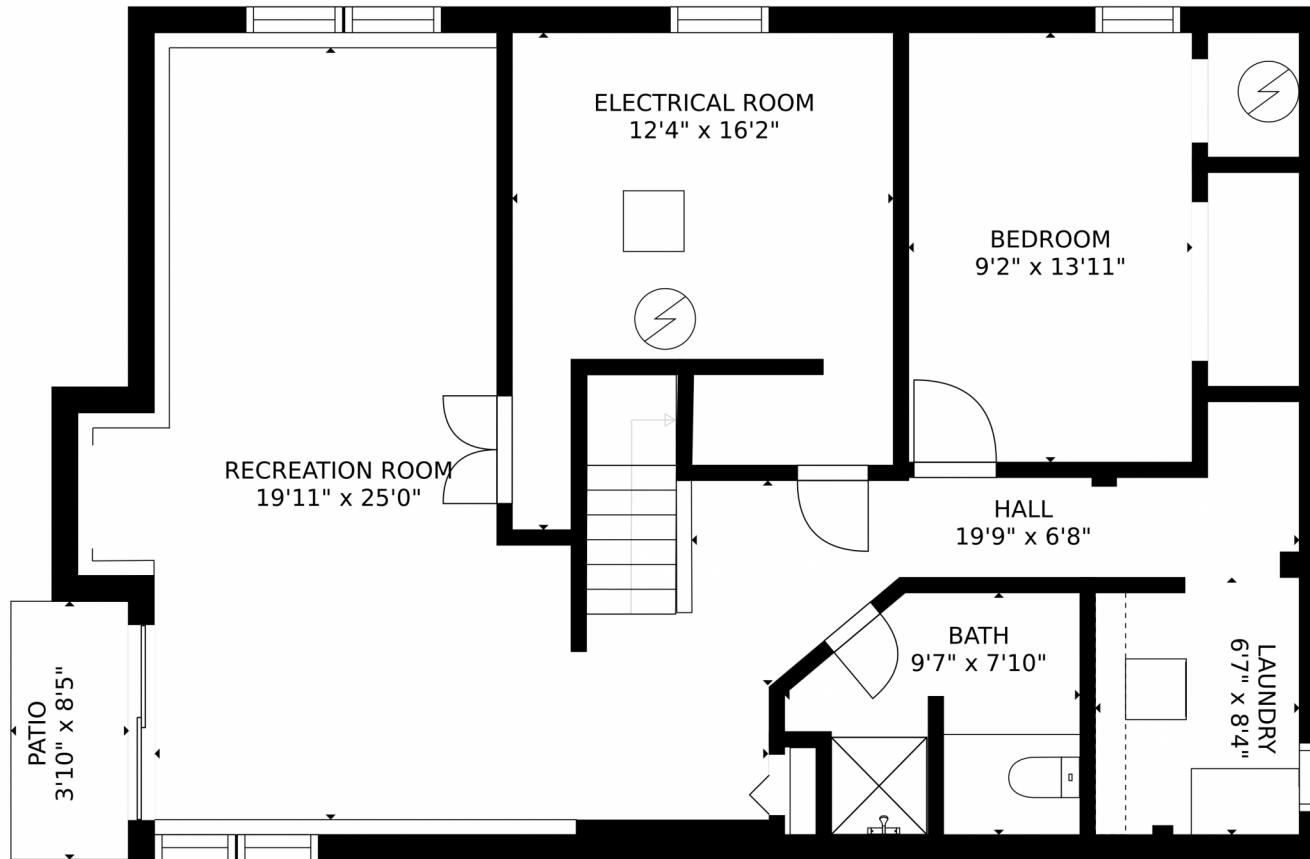
Disclaimer: Sizes and Dimensions are Approximate, Actual May Vary.



Jaden Combs
 303-324-1437
 jaden@kentwood.com



8005 Ponderosa Drive, Parker, CO 80138 – Lower Level



Estimated areas

G/LA FLOOR 1: 0 sq. ft. included 227 sq. ft.
G/LA FLOOR 2: 0 sq. ft. included 282 sq. ft.
G/LA FLOOR 3: 123 sq. ft. included 226 sq. ft.
G/LA FLOOR 4: 197 sq. ft. included 173 sq. ft.
G/LA FLOOR 5: 268 sq. ft. included 0 sq. ft.
Total G/LA 2673 sq. ft. total scanned area 5225 sq. ft.

SIZES AND DIMENSIONS ARE APPROXIMATE, ACTUAL MAY VARY.



Disclaimer: Sizes and Dimensions are Approximate, Actual May Vary.



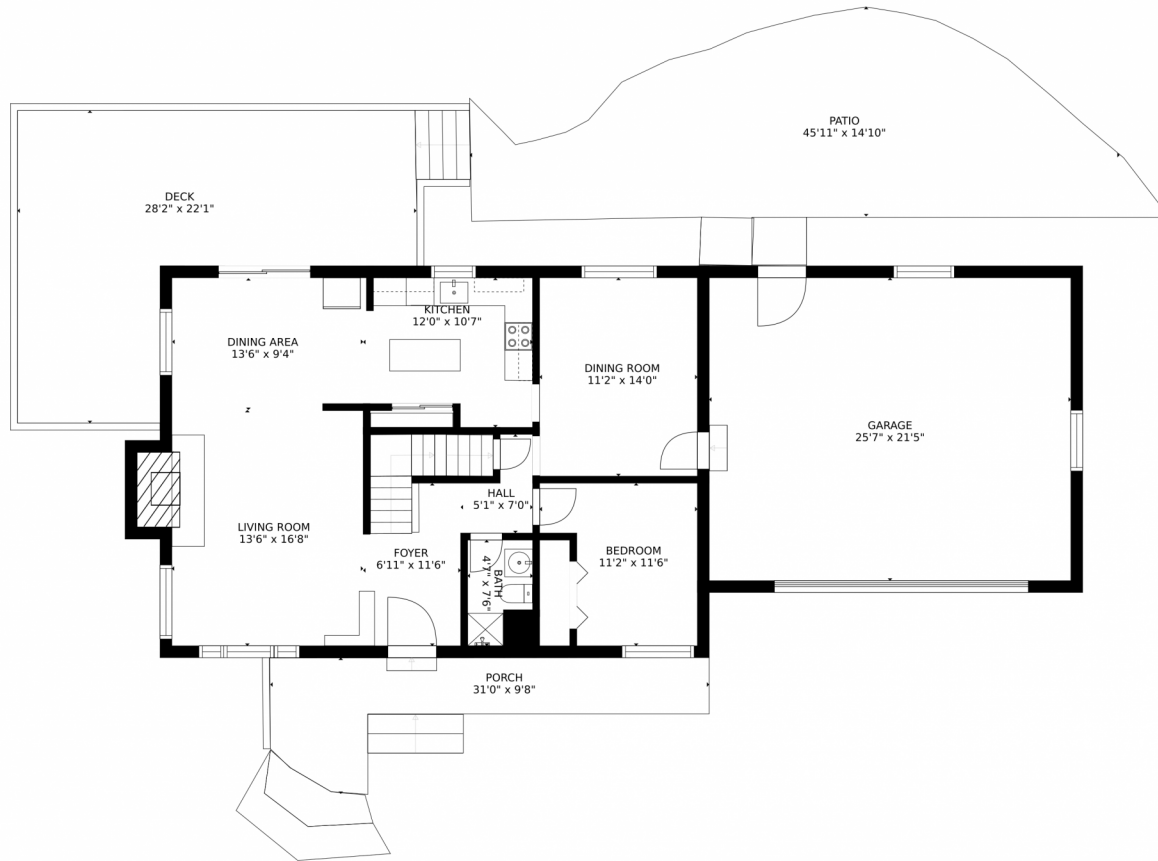
Jaden Combs
303-324-1437
jaden@kentwood.com



Scan code
for more
property
details



8005 Ponderosa Drive, Parker, CO 80138 – Main Level



Estimated areas

G/LA FLOOR 1: 0 sq. ft., excluded 227 sq. ft.
G/LA FLOOR 2: 0 sq. ft., excluded 282 sq. ft.
G/LA FLOOR 3: 123 sq. ft., excluded 226 sq. ft.
G/LA FLOOR 4: 1927 sq. ft., excluded 1775 sq. ft.
G/LA FLOOR 5: 569 sq. ft., excluded 0 sq. ft.
Total G/LA 2671 sq. ft., total scanned area 5225 sq. ft.

SIZES AND DIMENSIONS ARE APPROXIMATE, ACTUAL MAY VARY.



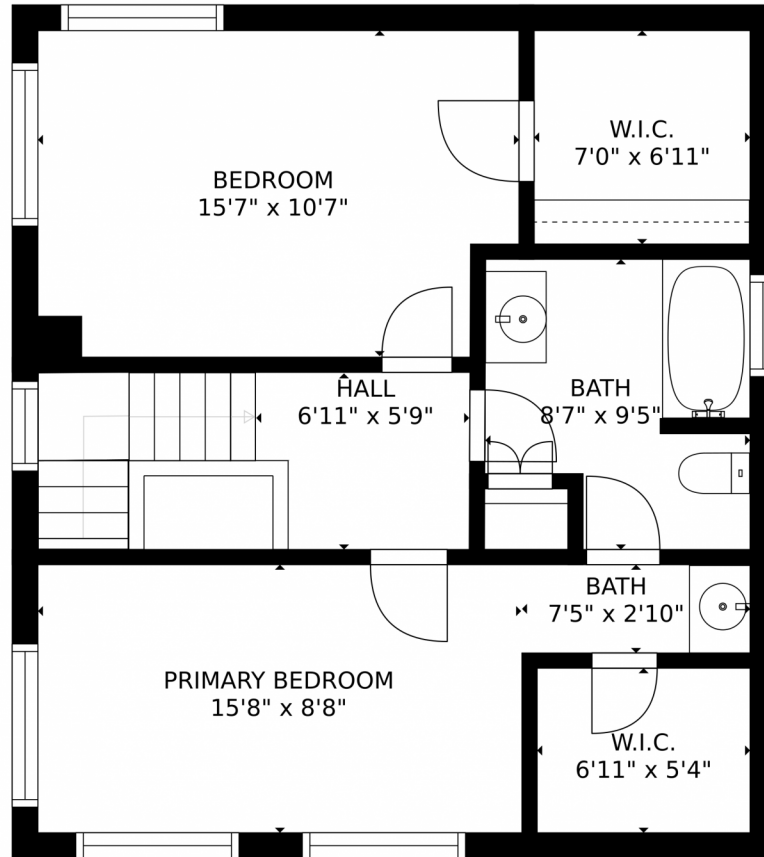
Disclaimer: Sizes and Dimensions are Approximate, Actual May Vary.



Jaden Combs
303-324-1437
jaden@kentwood.com



8005 Ponderosa Drive, Parker, CO 80138 – 2nd Level



Estimated areas

G/A FLOOR 1: 0 sq. ft. included 227 sq. ft.
G/A FLOOR 2: 0 sq. ft. included 282 sq. ft.
G/A FLOOR 3: 123 sq. ft. included 228 sq. ft.
G/A FLOOR 4: 197 sq. ft. included 173 sq. ft.
G/A FLOOR 5: 268 sq. ft. included 0 sq. ft.
Total G/A 2673 sq. ft. total scanned area 5225 sq. ft.

SIZES AND DIMENSIONS ARE APPROXIMATE, ACTUAL MAY VARY.

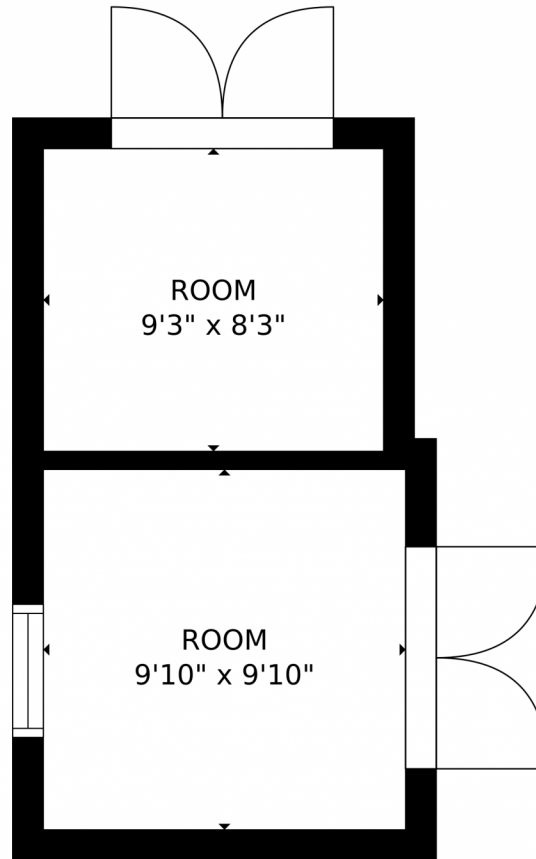


Disclaimer: Sizes and Dimensions are Approximate, Actual May Vary.



Jaden Combs
303-324-1437
jaden@kentwood.com





Estimated areas

G/A FLOOR 1: 0 sq. ft. included 227 sq. ft.
G/A FLOOR 2: 0 sq. ft. included 182 sq. ft.
G/A FLOOR 3: 133 sq. ft. included 228 sq. ft.
G/A FLOOR 4: 187 sq. ft. included 173 sq. ft.
G/A FLOOR 5: 488 sq. ft. included 0 sq. ft.
Total G/A 2675 sq. ft. total scanned area 5225 sq. ft.

SIZES AND DIMENSIONS ARE APPROXIMATE, ACTUAL MAY VARY.

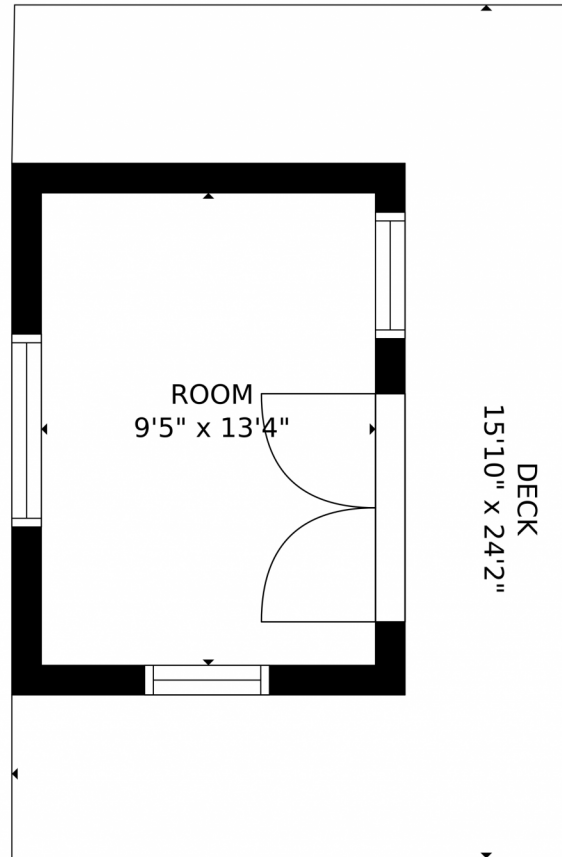


Disclaimer: Sizes and Dimensions are Approximate, Actual May Vary.



Jaden Combs
303-324-1437
jaden@kentwood.com





Estimated areas

GLA FLOOR 1: 0 sq. ft. included 227 sq. ft.
GLA FLOOR 2: 0 sq. ft. included 282 sq. ft.
GLA FLOOR 3: 122 sq. ft. included 226 sq. ft.
GLA FLOOR 4: 187 sq. ft. included 172 sq. ft.
GLA FLOOR 5: 248 sq. ft. included 0 sq. ft.
Total GLA 2671 sq. ft. total scanned area 5221 sq. ft.

SIZES AND DIMENSIONS ARE APPROXIMATE, ACTUAL MAY VARY.



Disclaimer: Sizes and Dimensions are Approximate, Actual May Vary.



Jaden Combs
303-324-1437
jaden@kentwood.com

