



Single Family



5442 SQFT



5 Beds



4/1 Baths



3 Car



0.27 Acre

## PROPERTY DETAILS

Majestic mountain views and an expansive open space surround this executive home in Parker. Enjoy Colorado sunsets on a large deck and BBQ in style under the custom-covered deck with recessed lights and tongue and groove ceiling. Soak in the hot tub while gazing at the mountains. Cherish Colorado evenings around the fire pit on the lower patio as the sun sets behind the mountains. Inside you will find recently refinished hardwood floors and freshly cleaned carpets. Spacious 9-foot ceilings on the main level and plantation shutters throughout the home. A butler's pantry and a built-in serving buffet complement the formal dining room. Gourmet kitchen with stainless steel appliances including a refrigerator and double ovens, granite countertops, and a large center island with counter seating. Upstairs offers a huge bonus room with mountain views, a perfect spot for a home office, game or media area. From the primary bedroom enjoy views of the mountains and open space. A 5-piece primary bath with a large soaking tub, glass shower door, separate dual vanities, and a roomy walk-in closet with closet organizers. A cozy loft provides the perfect spot to read and relax. The walk-out basement offers mountain views in the recreation room and 5th bedroom. Just steps away from miles of hiking trails and the open space surrounding the house and backyard.

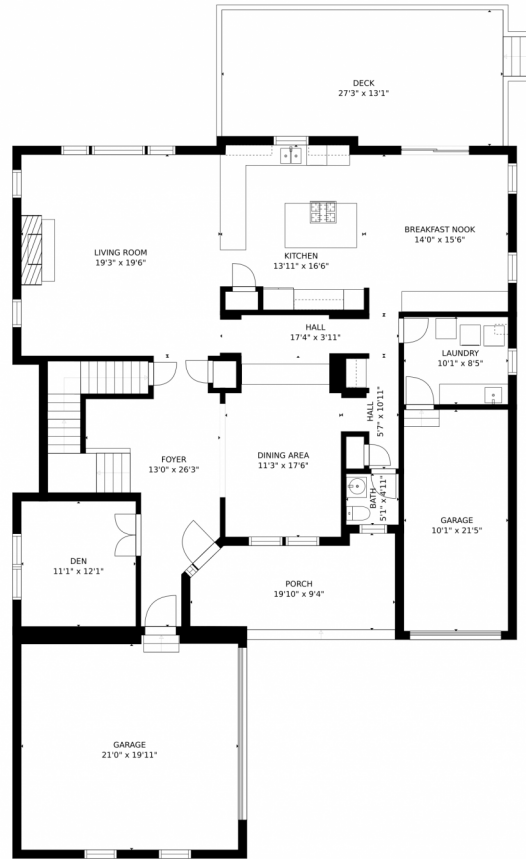


**Mitch Shannon**  
 303-229-1212  
 mitch@mitchshannon.com



Scan code  
 for more  
 property  
 details





Estimated areas

GLA FLOOR 1: 0 sq. ft, excluded 1842 sq. ft.  
GLA FLOOR 2: 1876 sq. ft, excluded 1256 sq. ft.  
GLA FLOOR 3: 2427 sq. ft, excluded 0 sq. ft.  
Total GLA 4303 sq. ft, total scanned area 7401 sq. ft.

SIZES AND DIMENSIONS ARE APPROXIMATE, ACTUAL MAY VARY.



Disclaimer: Sizes and Dimensions are Approximate, Actual May Vary.



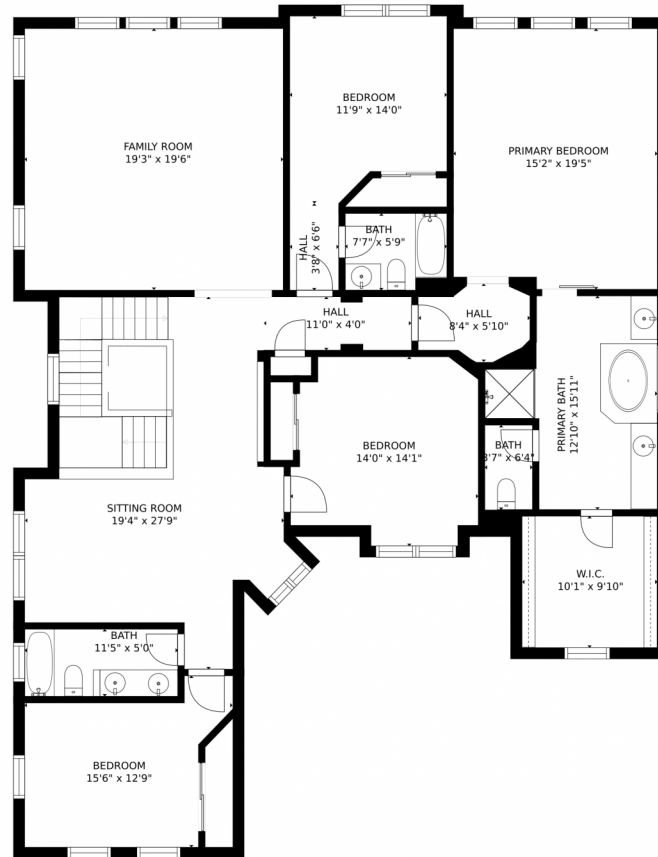
**Mitch Shannon**  
303-229-1212  
mitch@mitchshannon.com



Scan code  
for more  
property  
details



# 22903 Cleveland Drive, Parker, CO 80138 – Second Level



### Estimated areas

GLA FLOOR 1: 0 sq. ft, excluded 1842 sq. ft  
GLA FLOOR 2: 1876 sq. ft, excluded 1256 sq. ft  
GLA FLOOR 3: 2427 sq. ft, excluded 0 sq. ft  
Total GLA 4303 sq. ft, total scanned area 7401 sq. ft

SIZES AND DIMENSIONS ARE APPROXIMATE, ACTUAL MAY VARY.



Disclaimer: Sizes and Dimensions are Approximate, Actual May Vary.



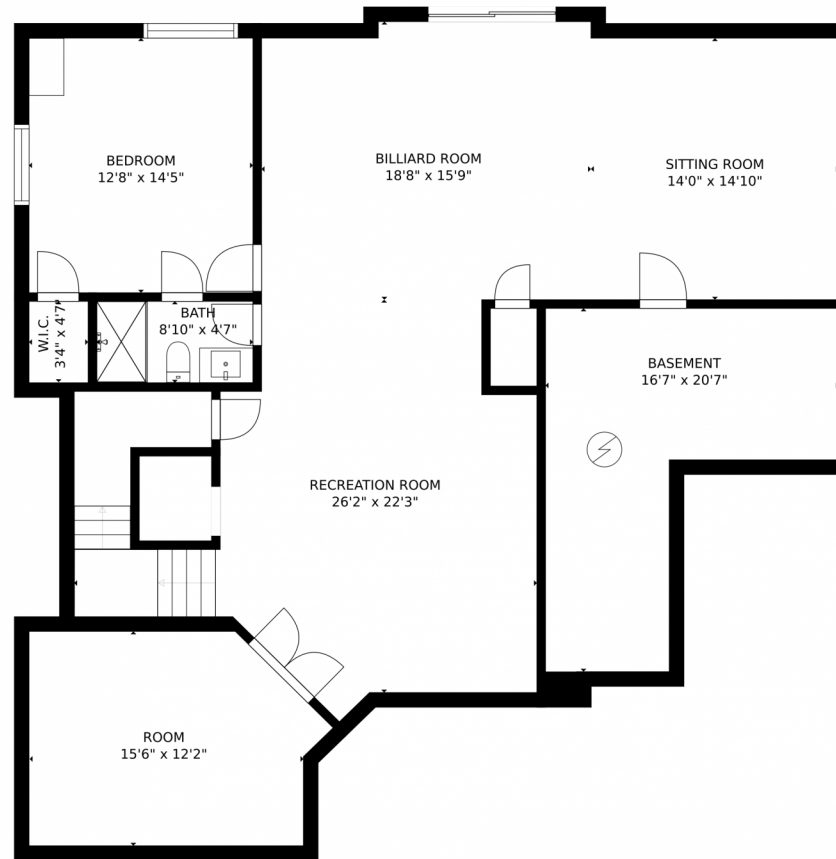
**Mitch Shannon**  
303-229-1212  
mitch@mitchshannon.com



Scan code  
for more  
property  
details



# 22903 Cleveland Drive, Parker, CO 80138 – Basement



### Estimated areas

GLA FLOOR 1: 0 sq. ft, excluded 1842 sq. ft  
GLA FLOOR 2: 1876 sq. ft, excluded 1256 sq. ft  
GLA FLOOR 3: 2427 sq. ft, excluded 0 sq. ft  
Total GLA 4303 sq. ft, total scanned area 7401 sq. ft

SIZES AND DIMENSIONS ARE APPROXIMATE, ACTUAL MAY VARY.

Disclaimer: Sizes and Dimensions are Approximate, Actual May Vary.



**Mitch Shannon**  
303-229-1212  
mitch@mitchshannon.com



# 22903 Cleveland Drive, Parker, CO 80138 – All Levels



### Estimated areas

GLA FLOOR 1: 0 sq. ft. excluded 1842 sq. ft.  
GLA FLOOR 2: 1876 sq. ft. excluded 1256 sq. ft.  
GLA FLOOR 3: 2427 sq. ft. excluded 0 sq. ft.  
Total GLA 4303 sq. ft. total scanned area 7401 sq. ft.

SIZES AND DIMENSIONS ARE APPROXIMATE, ACTUAL MAY VARY.



Disclaimer: Sizes and Dimensions are Approximate, Actual May Vary.



**Mitch Shannon**  
303-229-1212  
mitch@mitchshannon.com



Scan code  
for more  
property  
details

