



15501 E 112th Avenue
 Commerce City, CO 80022
COMMUNITY: The Greens at Buffalo Run

MLS # 7003052
PRICE \$480,000



Condominium



2196 SQFT



4 Beds



3/1 Baths



2 Car



0.09 Acre

PROPERTY DETAILS

This absolutely beautiful Irondale model was built in 2020 and is still stunning! This two story home has four bedrooms, four baths and a two car garage. On the main floor you have a living room area, dining area, half bath and a gourmet kitchen with center island, quartz countertops, upper end stainless steel appliances, and quality cabinetry. Upstairs there are three bedrooms, full main bath, laundry room, and a master suite with a walk in closet and lovely 3/4 bath with double sinks. In the full finished basement you will enjoy a family room, spacious 4th bedroom and 3/4 bath. You will love the 9 foot ceilings (even in the basement), luxury vinyl flooring, quartz countertops, custom canned lighting, under mount sinks, large windows and custom tile in the bathrooms. Close to public transit, shopping, schools and outdoor recreation. The Buffalo Run Golf Course and restaurant is only a short distance away. This is perfect for those who desire a single family home without the maintenance and added costs.



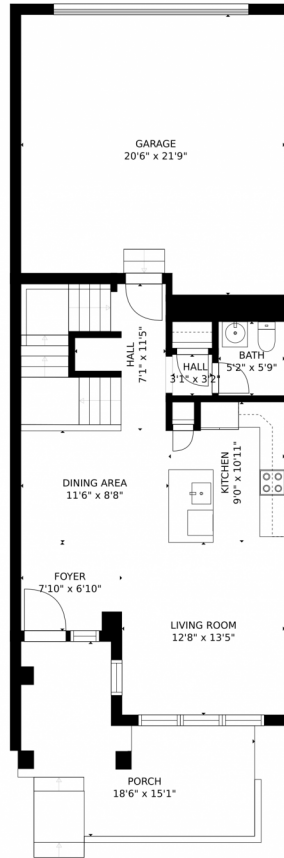
Andy Ahroon
 303-881-2403
 andy@andyahroon.com



Scan code
 for more
 property
 details



15501 E 112th Avenue, Commerce City, CO 80022 – Main Floor



Estimated areas

GLA FLOOR 1: 0 sq. ft., excluded 669 sq. ft.
GLA FLOOR 2: 711 sq. ft., excluded 684 sq. ft.
GLA FLOOR 3: 1097 sq. ft., excluded 33 sq. ft.
Total GLA 1808 sq. ft., total scanned area 3194 sq. ft.

SIZES AND DIMENSIONS ARE APPROXIMATE, ACTUAL MAY VARY.

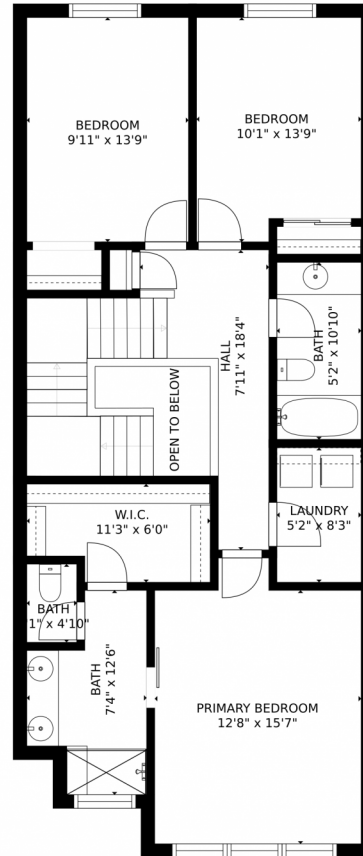


Disclaimer: Sizes and Dimensions are Approximate, Actual May Vary.



Andy Ahroon
303-881-2403
andy@andyahroon.com





Estimated areas

GLA FLOOR 1: 0 sq. ft, excluded 669 sq. ft.
GLA FLOOR 2: 711 sq. ft, excluded 684 sq. ft.
GLA FLOOR 3: 1097 sq. ft, excluded 33 sq. ft.
Total GLA 1808 sq. ft, total scanned area 3194 sq. ft.

SIZES AND DIMENSIONS ARE APPROXIMATE, ACTUAL MAY VARY.



Disclaimer: Sizes and Dimensions are Approximate, Actual May Vary.



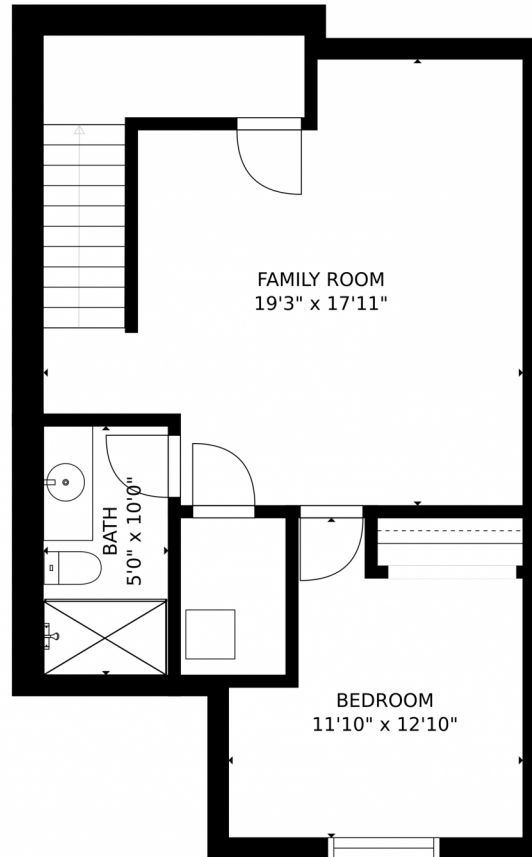
Andy Ahroon
303-881-2403
andy@andyahroon.com



Scan code for more property details



15501 E 112th Avenue, Commerce City, CO 80022 — Bottom Floor



Estimated areas

GLA FLOOR 1: 0 sq. ft., excluded 669 sq. ft.
GLA FLOOR 2: 711 sq. ft., excluded 684 sq. ft.
GLA FLOOR 3: 1097 sq. ft., excluded 33 sq. ft.
Total GLA 1808 sq. ft., total scanned area 3194 sq. ft.

SIZES AND DIMENSIONS ARE APPROXIMATE, ACTUAL MAY VARY.



Disclaimer: Sizes and Dimensions are Approximate, Actual May Vary.



Andy Ahroon
303-881-2403
andy@andyahroon.com



15501 E 112th Avenue, Commerce City, CO 80022 — All



Estimated areas

GLA FLOOR 1: 0 sq. ft., excluded 669 sq. ft.
GLA FLOOR 2: 711 sq. ft., excluded 684 sq. ft.
GLA FLOOR 3: 1097 sq. ft., excluded 33 sq. ft.
Total GLA 1808 sq. ft., total scanned area 3194 sq. ft.

SIZES AND DIMENSIONS ARE APPROXIMATE, ACTUAL MAY VARY.



Disclaimer: Sizes and Dimensions are Approximate, Actual May Vary.



Andy Ahroon
303-881-2403
andy@andyahroon.com

