



Single Family



1820 SQFT



3 Beds



2/1 Baths



2 Car



0.09 Acre

## PROPERTY DETAILS

Your new home lies in the shadow of the foothills. This location has so much to offer for that 'Colorado lifestyle'. Close to transportation to get you to the mountains, mountain biking and trail running! Come on in and look around. Upon entry, the renovated kitchen will grab your eye featuring soft close; solid wood cabinets, many with pull outs, dimmable under cabinet lighting, heated floors, KitchenAid stainless steel appliances with induction stove, touch activated faucet, and a motion activated light in the pantry. The matching counter height table/island with quartz top stays with the home and makes a perfect table as well as prep area. Don't forget about the living room and its sun drenched south facing bay window and cozy fireplace. Head on upstairs and you'll find the center bathroom, the primary bedroom, along with the 2nd bedroom. The lower level offers the family room, the 3rd bedroom and a full bath. The entertainer in you will love the basement; it's wet bar, rec area with so many uses, 1/2 bath and the laundry. There are many upgrades in this home, many you won't see; insulated garage door, 200 amp service, Attic fan, whole house humidifier, low maintenance turf, attic fan, and a whole house humidifier. Don't miss the hot tub out back along with the raised garden beds on the west side of the home.



**Brad Colburn**  
 303-618-0109  
 brad@madisonprops.com  
<http://www.runbuysell.com>



Scan code  
 for more  
 property  
 details



# 12767 w. Dorado pl., Littleton, CO 80127 – All Levels



### Estimated areas

GLA FLOOR 1: 0 sq. ft. excluded 537 sq. ft.  
GLA FLOOR 2: 339 sq. ft. excluded 305 sq. ft.  
GLA FLOOR 3: 434 sq. ft. excluded 507 sq. ft.  
Total GLA 1373 sq. ft. total scanned area 2722 sq. ft.

SIZES AND DIMENSIONS ARE APPROXIMATE, ACTUAL MAY VARY.



Disclaimer: Sizes and Dimensions are Approximate, Actual May Vary.



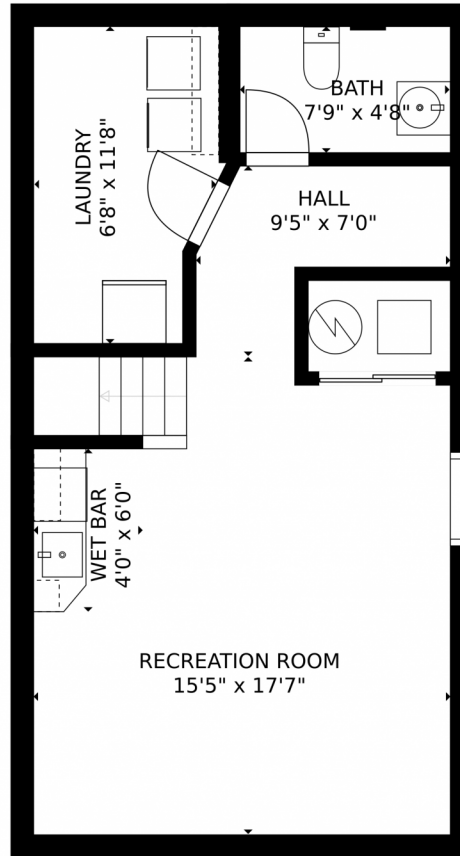
**Brad Colburn**  
303-618-0109  
brad@madisonprops.com  
<http://www.runbuysell.com>



Scan code  
for more  
property  
details



12767 w. Dorado pl., Littleton, CO 80127 – Lower Level



Estimated areas

GLA FLOOR 1: 0 sq. ft, excluded 537 sq. ft  
GLA FLOOR 2: 939 sq. ft, excluded 305 sq. ft  
GLA FLOOR 3: 434 sq. ft, excluded 507 sq. ft  
Total GLA 1373 sq. ft, total scanned area 2722 sq. ft

SIZES AND DIMENSIONS ARE APPROXIMATE, ACTUAL MAY VARY.



Disclaimer: Sizes and Dimensions are Approximate, Actual May Vary.



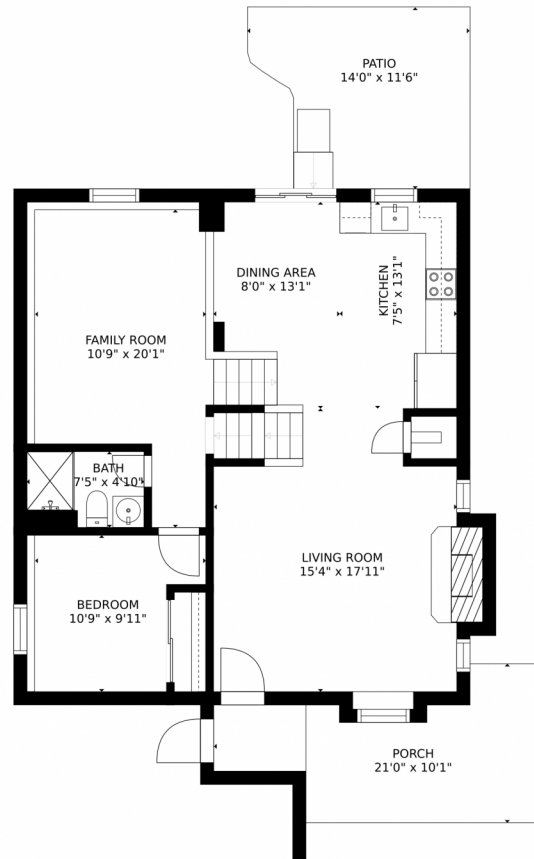
**Brad Colburn**  
303-618-0109  
brad@madisonprops.com  
<http://www.runbuysell.com>



Scan code  
for more  
property  
details



12767 w. Dorado pl., Littleton, CO 80127 – Main



Estimated areas

GLA FLOOR 1: 0 sq. ft, excluded 537 sq. ft  
GLA FLOOR 2: 939 sq. ft, excluded 305 sq. ft  
GLA FLOOR 3: 434 sq. ft, excluded 507 sq. ft  
Total GLA 1373 sq. ft, total scanned area 2722 sq. ft

SIZES AND DIMENSIONS ARE APPROXIMATE, ACTUAL MAY VARY.



Disclaimer: Sizes and Dimensions are Approximate, Actual May Vary.

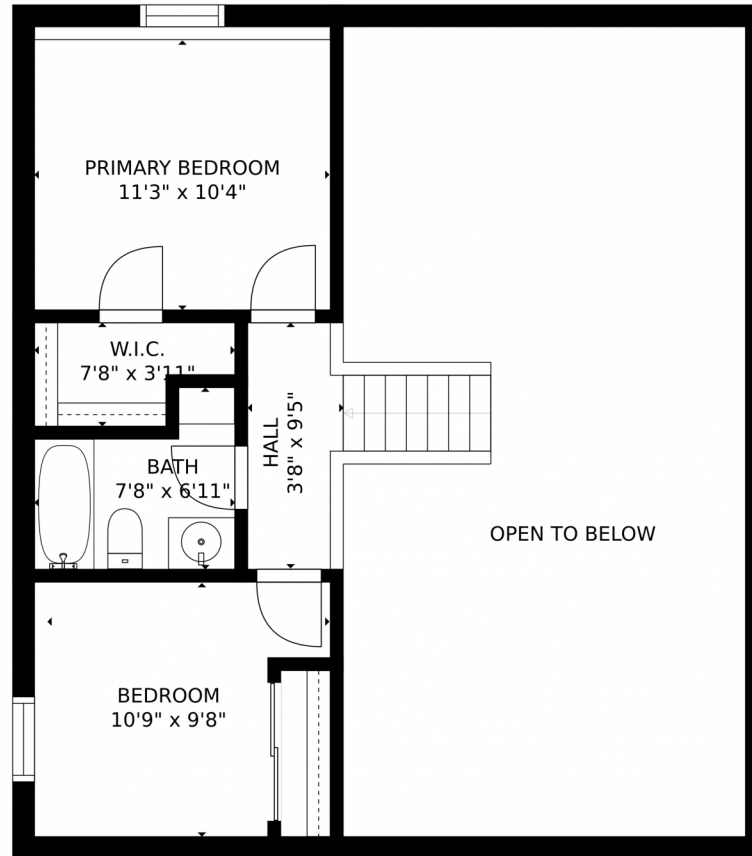


**Brad Colburn**  
303-618-0109  
brad@madisonprops.com  
<http://www.runbuysell.com>



Scan code  
for more  
property  
details





Estimated areas

GLA FLOOR 1: 0 sq. ft, excluded 537 sq. ft.  
GLA FLOOR 2: 939 sq. ft, excluded 305 sq. ft.  
GLA FLOOR 3: 434 sq. ft, excluded 507 sq. ft.  
Total GLA 1373 sq. ft, total scanned area 2722 sq. ft.

SIZES AND DIMENSIONS ARE APPROXIMATE, ACTUAL MAY VARY.



Disclaimer: Sizes and Dimensions are Approximate, Actual May Vary.



**Brad Colburn**  
303-618-0109  
brad@madisonprops.com  
<http://www.runbuysell.com>

