



Single Family



2826 SQFT



Taylor Haas

303-665-7368

taylorh@coloradorpm.com

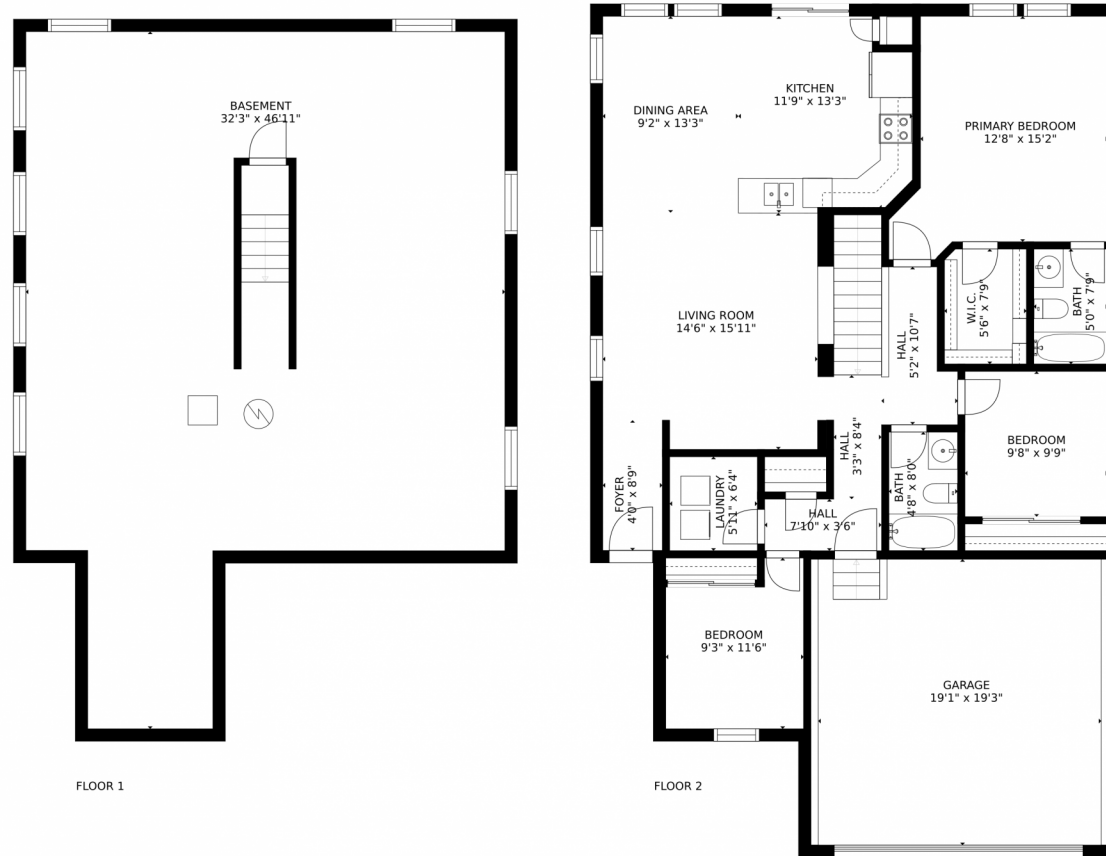
<https://www.coloradorpm.com/available-rental-properties-denver>



Scan code
for more
property
details



5524 Kittredge Street, Denver, CO 80239 – All Floors



Estimated areas

GLA FLOOR 1: 0 sq. ft, excluded 1363 sq. ft
GLA FLOOR 2: 1465 sq. ft, excluded 850 sq. ft
Total GLA 1465 sq. ft, total scanned area 3678 sq. ft

SIZES AND DIMENSIONS ARE APPROXIMATE, ACTUAL MAY VARY.



Disclaimer: Sizes and Dimensions are Approximate, Actual May Vary.



Taylor Haas

303-665-7368

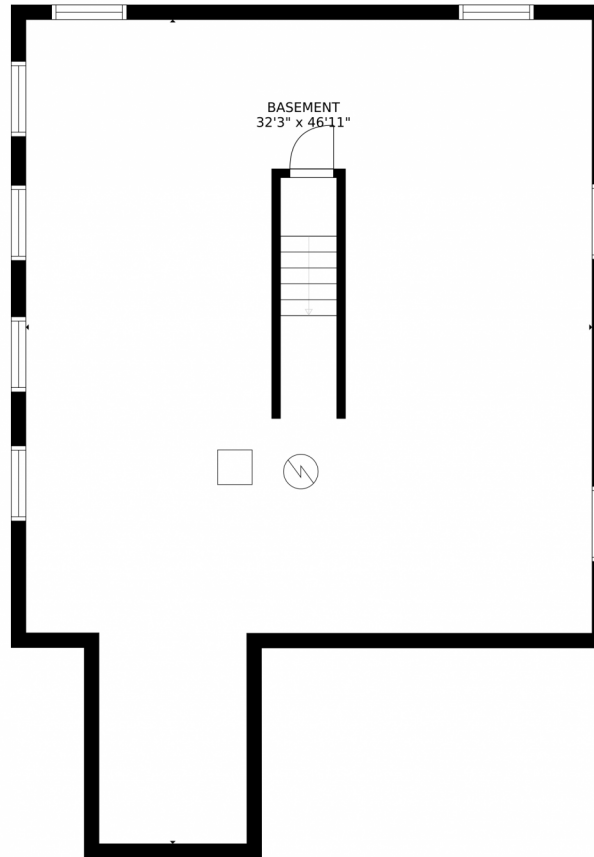
taylorh@coloradorpm.com

<https://www.coloradorpm.com/available-rental-properties-denv>



Scan code
for more
property
details





Estimated areas
GLA FLOOR 1: 0 sq. ft, excluded 1363 sq. ft
GLA FLOOR 2: 1465 sq. ft, excluded 850 sq. ft
Total GLA 1465 sq. ft, total scanned area 3678 sq. ft
SIZES AND DIMENSIONS ARE APPROXIMATE, ACTUAL MAY VARY.



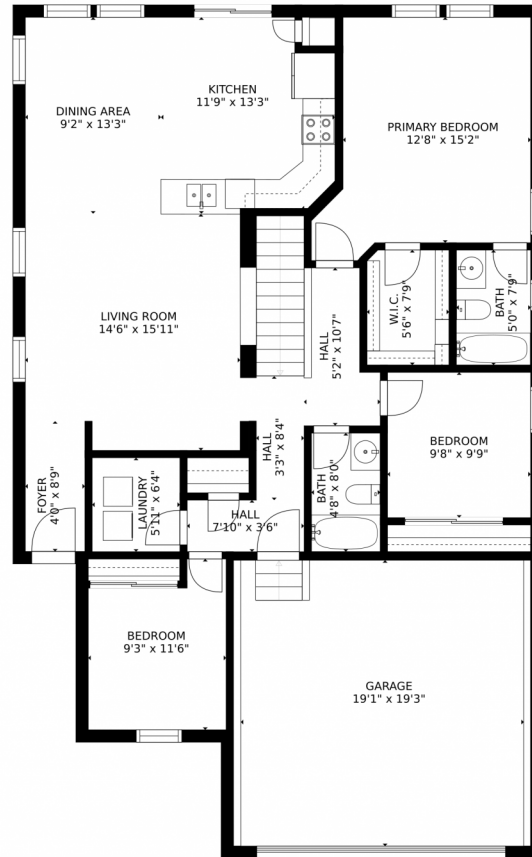
Disclaimer: Sizes and Dimensions are Approximate, Actual May Vary.



Taylor Haas
303-665-7368
taylorh@coloradorpm.com
<https://www.coloradorpm.com/available-rental-properties-denver>



5524 Kittredge Street, Denver, CO 80239 – Main Floor



Estimated areas

GLA FLOOR 1: 0 sq. ft, excluded 1363 sq. ft
GLA FLOOR 2: 1465 sq. ft, excluded 850 sq. ft
Total GLA 1465 sq. ft, total scanned area 3678 sq. ft

SIZES AND DIMENSIONS ARE APPROXIMATE, ACTUAL MAY VARY.



Disclaimer: Sizes and Dimensions are Approximate, Actual May Vary.



Taylor Haas

303-665-7368

taylorh@coloradorpm.com

<https://www.coloradorpm.com/available-rental-properties-denv>



Scan code
for more
property
details

