

Desirable Location in Southwood!



 Single Family  2400 SQFT  3 Beds  2/1 Baths  1 Car

PROPERTY DETAILS

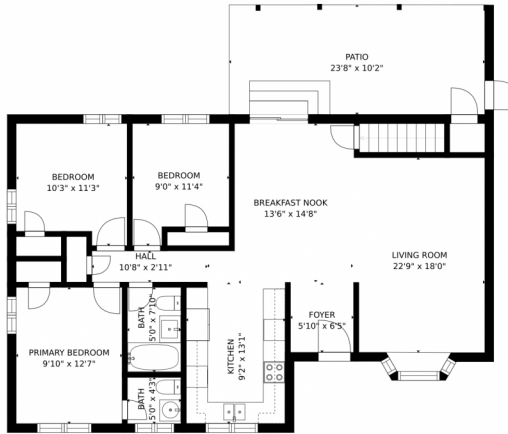
Beautiful brick ranch home in desirable Southwood! Nice lot, south facing & mature landscaping. Refinished hardwood floors, updated bathrooms, bay window in living room, Interior paint & baseboards recently updated. Covered paver patio in back to enjoy year round. Walk to the Highline Canal Trail, Milliken Park or DeKoevend Park. To make this home even more appealing, it's in the perfect location. Littleton schools are minutes away, and numerous shopping and dining options are just waiting for you to stop by and enjoy both at Cherry Hills Marketplace with a Trader Joe's and Streets at SouthGlenn for movies, shopping, summer concerts and more. Well maintained and updated home, ready to go.



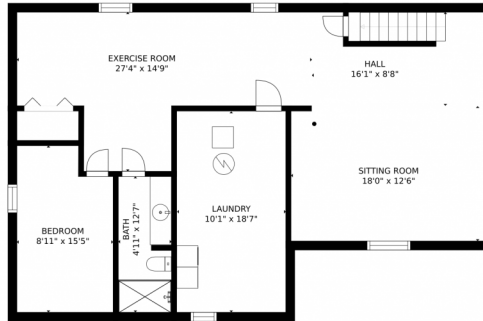
Theresa Hinch
303-947-5346
theresa.hinch@madisonprops.com
<https://www.madisonprops.com>



861 E Applewood Ave, Centennial, CO 80121 – All Levels



FLOOR 2



FLOOR 1

Estimated areas

GLA FLOOR 1: 0 sq. ft, excluded 1207 sq. ft
GLA FLOOR 2: 1203 sq. ft, excluded 252 sq. ft
Total GLA 1203 sq. ft, total scanned area 2662 sq. ft

SIZES AND DIMENSIONS ARE APPROXIMATE, ACTUAL MAY VARY.



Disclaimer: Sizes and Dimensions are Approximate, Actual May Vary.



Theresa Hinch

303-947-5346

theresa.hinch@madisonprops.com

<https://www.madisonprops.com>



Scan code
for more
property
details

