



7724 Oasis Drive
 Castle Rock, CO 80108
 COMMUNITY: Villages at Castle Rock

MLS # 6736413
 PRICE \$875,000



Single Family



4861 SQFT



4 Beds



3 Baths



2 Car



0.23 Acre

PROPERTY DETAILS

Smashing open ranch style home! Backing to open space, this one is unparalleled! Hurry to see your opportunity for a slice of heaven in Castle Rock. Amazing views! Beautiful upgrades! So many details. Huge open views, cased windows and doors, recessed can lighting, ceiling fans in great room and bedrooms. Sound system, surround sound, subwoofer and speakers, tray ceiling, chair railing and crown moulding, sellers spared no expense with this property. Plantation shutters, upgraded carpet, great room fireplace is white marble! Main floor has all you need! But wait, there's more! The mostly finished walk out basement is extraordinary! Another bedroom and bathroom, a great flex room, (office, game room, or home gym perhaps?) In the unfinished area you'll find great space, lots of room for storage, or whatever you can imagine! Remarkable backyard, fruit trees!!



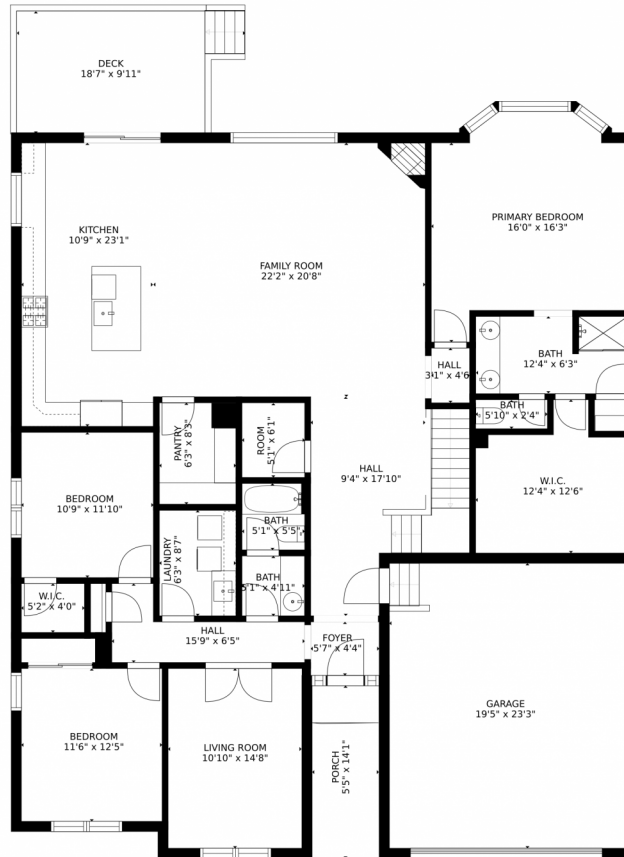
Annie Schneider
 303-548-5299
 annie@annieschneider.com



Scan code
 for more
 property
 details



7724 Oasis Drive, Castle Rock, CO 80108 – Main



Estimated areas

GLA FLOOR 1: 0 sq. ft, excluded 2591 sq. ft
GLA FLOOR 2: 2444 sq. ft, excluded 740 sq. ft
Total GLA 2444 sq. ft, total scanned area 5775 sq. ft

SIZES AND DIMENSIONS ARE APPROXIMATE, ACTUAL MAY VARY.



Disclaimer: Sizes and Dimensions are Approximate, Actual May Vary.

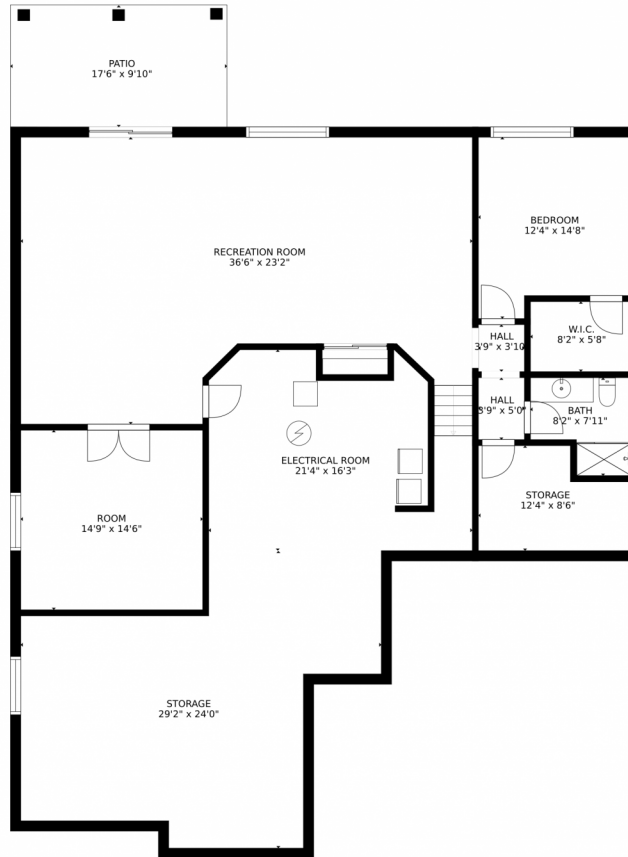


Annie Schneider
303-548-5299
annie@annieschneider.com



Scan code
for more
property
details

7724 Oasis Drive, Castle Rock, CO 80108 – Basement



Estimated areas

GLA FLOOR 1: 0 sq. ft, excluded 2591 sq. ft
GLA FLOOR 2: 2444 sq. ft, excluded 740 sq. ft
Total GLA 2444 sq. ft, total scanned area 5775 sq. ft

SIZES AND DIMENSIONS ARE APPROXIMATE, ACTUAL MAY VARY.



Disclaimer: Sizes and Dimensions are Approximate, Actual May Vary.



Annie Schneider
303-548-5299
annie@annieschneider.com



7724 Oasis Drive, Castle Rock, CO 80108 – All Levels



Estimated areas

GLA FLOOR 1: 0 sq. ft, excluded 2591 sq. ft.
GLA FLOOR 2: 2444 sq. ft, excluded 740 sq. ft.
Total GLA 2444 sq. ft, total scanned area 5775 sq. ft.

SIZES AND DIMENSIONS ARE APPROXIMATE, ACTUAL MAY VARY.



Disclaimer: Sizes and Dimensions are Approximate, Actual May Vary.



Annie Schneider
303-548-5299
annie@annieschneider.com



Scan code
for more
property
details

