



1753 Montane Drive E  
Golden, CO 80401

COMMUNITY: Genesee

MLS # 9575701  
PRICE \$3,600,000



Single Family



7464 SQFT



5 Beds



4/1 Baths



3 Car



4.85 Acre

## PROPERTY DETAILS

4.85 Acres where sophistication meets timeless mountain-modern luxury, you'll feel like you're floating amongst the clouds with panoramic views of the vistas you can enjoy from nearly every room in this custom-built estate. Nestled in the hillside of Genesee, this sanctuary of natural beauty provides seclusion and tranquility, with easy access west to the epic Colorado hills or head east to the big city.

While both of the outdoor patios provide surreal and unobstructed views of Mt. Evans, the view of Colorado wonders can be seen from almost every room in the house. Imaging drinking your coffee while watching the sunrise in the morning from the nook in the kitchen, or being able to see the snow fall on top of the peaks as you cozy up near the fireplace in the living room. With recent updates to the flooring, lighting and paint - this home was built for entertaining, featuring a large open floor plan with easy flow between the living room, family rooms, and formal dining room, all surrounded by the windows with picturesque background of Colorado's peaks and Sonos throughout the home. The kitchen is a chef's dream with updated appliances and a large island with ultimate counter and storage space.

Plenty of natural light shines throughout the entire home from the sprawling windows, sweeping views from all five bedrooms,



Julie Leins

720-474-0928

julieleins@kw.com

<https://coloradohomesdreamteam.com>

Scan code  
for more  
property  
details



including the two grand master suites. Both are outfitted with spectacular walk-in closet spaces, as well as fireplaces and a gateway to step outside onto the patio to enjoy the sunset. Or as the snow falls, you can enjoy the view while soaking in one of the jetted tubs in either of the master suites.

Your home will be a retreat of privacy, sophistication and security, near plenty of trails for running, biking, hiking, and just around the corner from the community club house, pool and fitness center. This dream home is ideal for your Colorado lifestyle.

Video Link <https://v1tours.com/listing/41561>



**Julie Leins**

720-474-0928

[julieleins@kw.com](mailto:julieleins@kw.com)

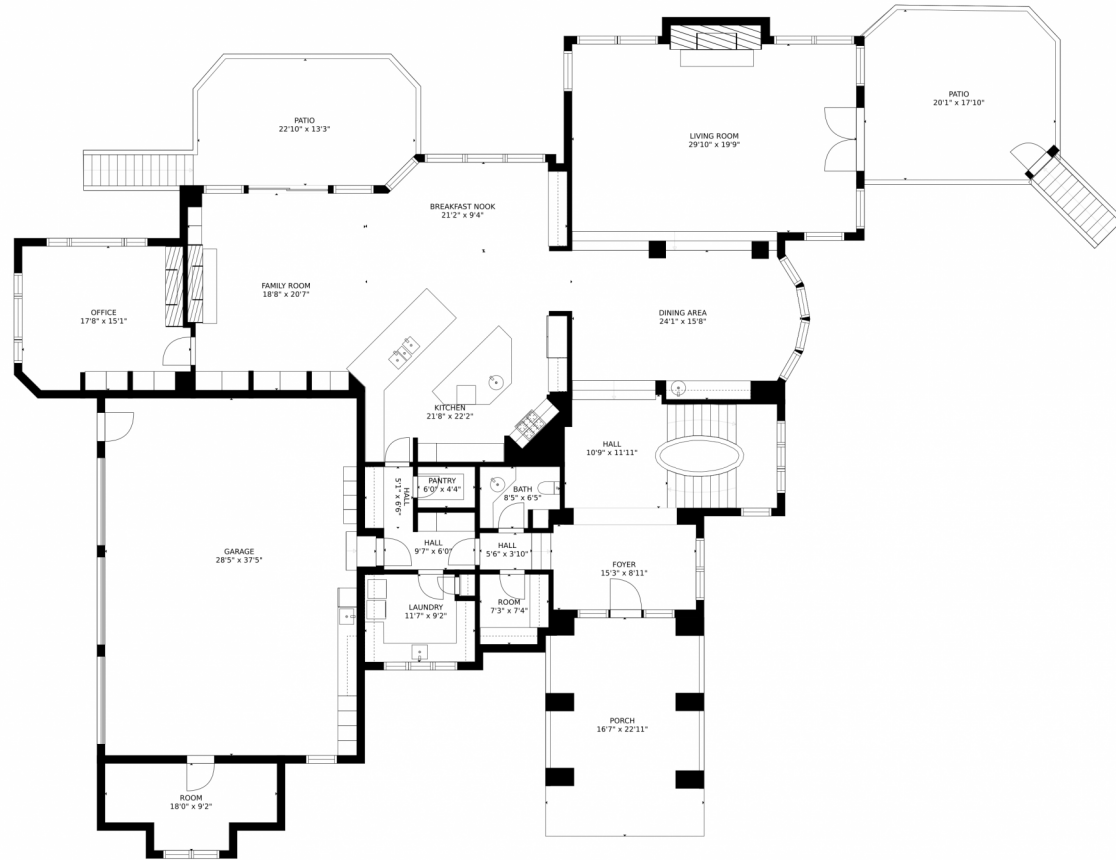
<https://coloradohomesdreamteam.com>



Scan code  
for more  
property  
details



# 1753 Montane Drive E, Golden, CO 80401 – Main



### Estimated areas

GLA FLOOR 1: 0 sq. ft, excluded 4172 sq. ft.  
GLA FLOOR 2: 3336 sq. ft, excluded 2410 sq. ft.  
GLA FLOOR 3: 1655 sq. ft, excluded 288 sq. ft.  
Total GLA 4993 sq. ft, total scanned area 11863 sq. ft.

SIZES AND DIMENSIONS ARE APPROXIMATE, ACTUAL MAY VARY.

Disclaimer: Sizes and Dimensions are Approximate, Actual May Vary.



**Julie Leins**

720-474-0928

julieleins@kw.com

<https://coloradohomesdreamteam.com>



Scan code  
for more  
property  
details



1753 Montane Drive E, Golden, CO 80401 – 2nd Level



Disclaimer: Sizes and Dimensions are Approximate, Actual May Vary.



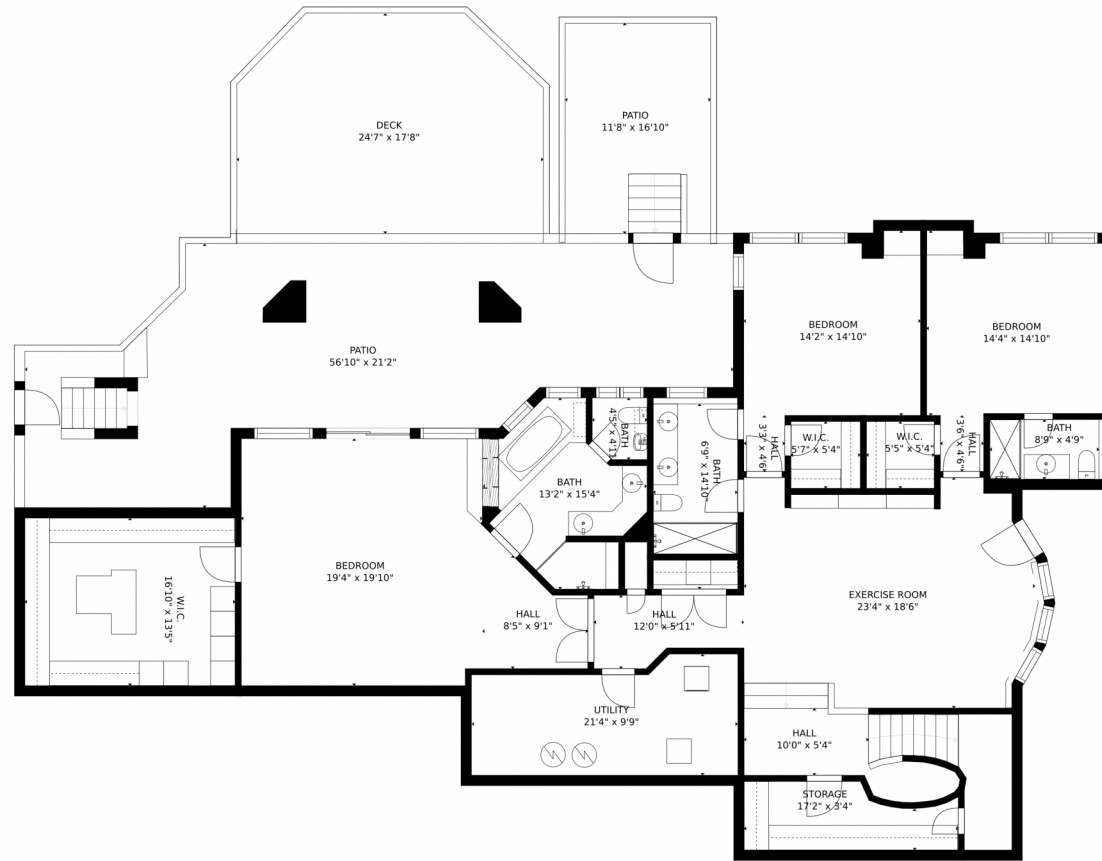
**Julie Leins**  
720-474-0928  
julieleins@kw.com  
<https://coloradohomesdreamteam.com>



Scan code  
for more  
property  
details



# 1753 Montane Drive E, Golden, CO 80401 – Lower Level



### Estimated areas

GLA FLOOR 1: 0 sq. ft., excluded 4172 sq. ft.  
GLA FLOOR 2: 3336 sq. ft., excluded 2410 sq. ft.  
GLA FLOOR 3: 1655 sq. ft., excluded 288 sq. ft.  
Total GLA 4993 sq. ft., total scanned area 11863 sq. ft.

SIZES AND DIMENSIONS ARE APPROXIMATE, ACTUAL MAY VARY.



Disclaimer: Sizes and Dimensions are Approximate, Actual May Vary.



**Julie Leins**

720-474-0928

julieleins@kw.com

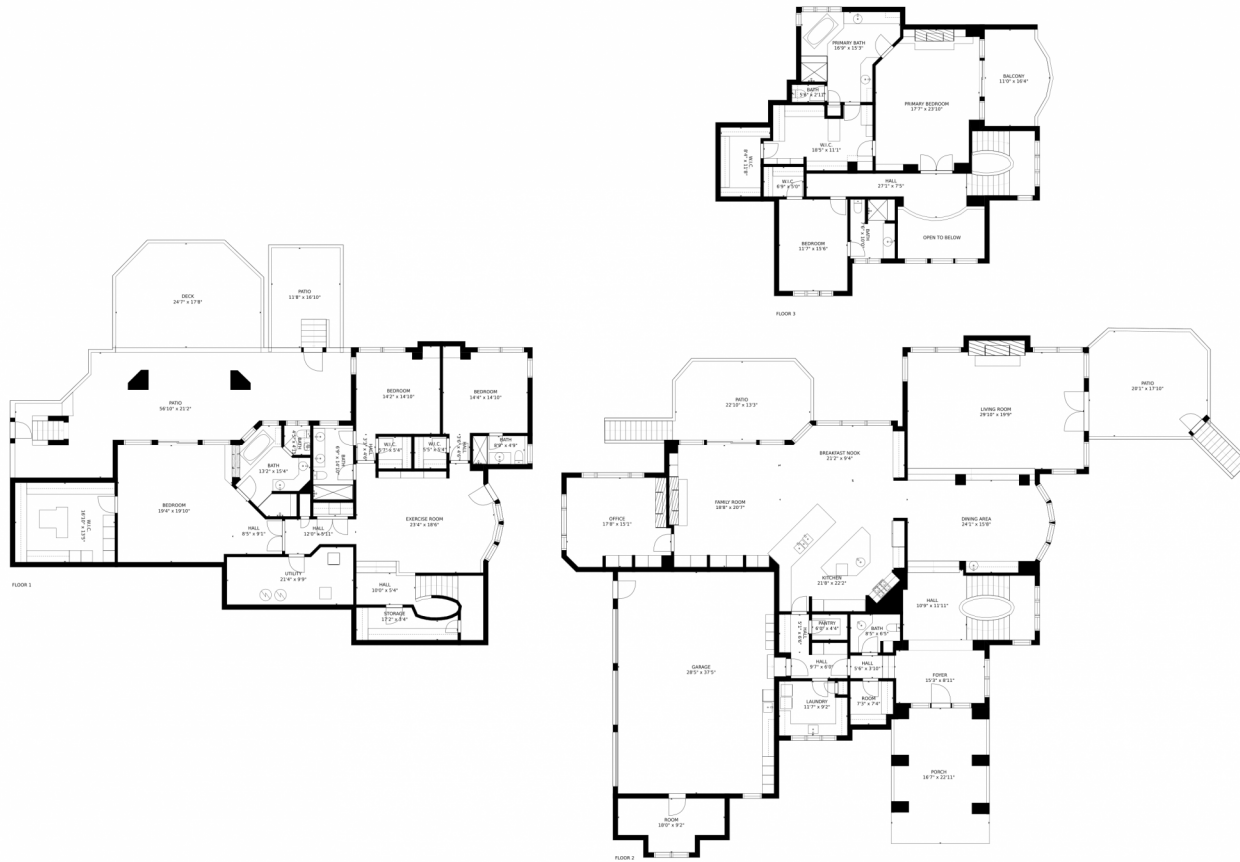
<https://coloradohomesdreamteam.com>



Scan code  
for more  
property  
details



# 1753 Montane Drive E, Golden, CO 80401 – All Level



### Estimated areas

GLA FLOOR 1: 0 sq. ft. excluded 4172 sq. ft.  
GLA FLOOR 2: 3336 sq. ft. excluded 2410 sq. ft.  
GLA FLOOR 3: 1655 sq. ft. excluded 288 sq. ft.  
Total GLA 4993 sq. ft. total scanned area 11863 sq. ft.

SIZES AND DIMENSIONS ARE APPROXIMATE, ACTUAL MAY VARY.



Disclaimer: Sizes and Dimensions are Approximate, Actual May Vary.



**Julie Leins**

720-474-0928

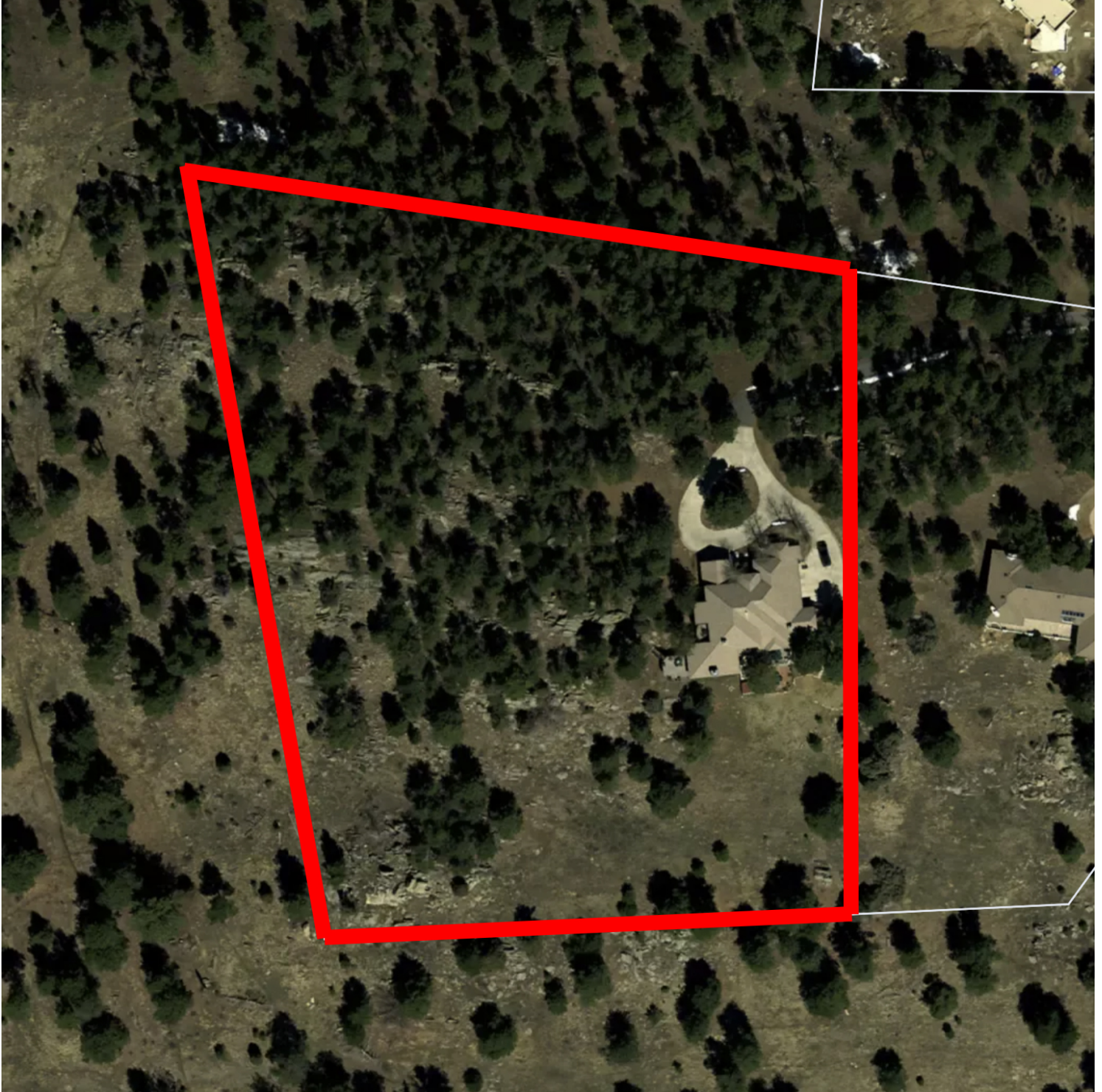
julieleins@kw.com

<https://coloradohomesdreamteam.com>



Scan code  
for more  
property  
details





Disclaimer: Sizes and Dimensions are Approximate, Actual May Vary.



**Julie Leins**  
720-474-0928  
julieleins@kw.com  
<https://coloradohomesdreamteam.com>

