



3616 Leyden Street
Denver, CO 80207
COMMUNITY: Park Hill



Single Family



1748 SQFT



4 Beds



2/1 Baths

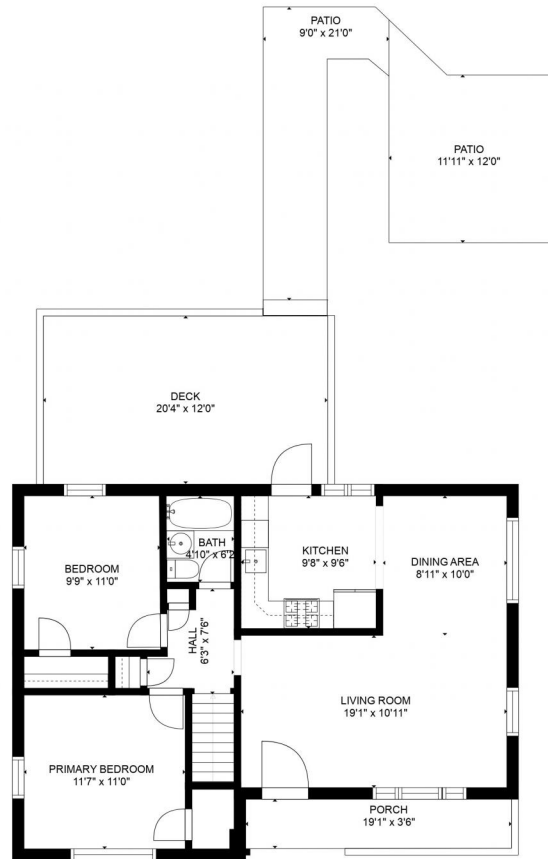


1 Car

Carly Hahl
303-877-2631
carlyabelzer@gmail.com



3616 Leyden Street, Denver, CO 80207 – Main Floor



Estimated areas

GLA FLOOR 1: 0 sq. ft, excluded 804 sq. ft
GLA FLOOR 2: 893 sq. ft, excluded 583 sq. ft
Total GLA 893 sq. ft, total scanned area 2280 sq. ft

SIZES AND DIMENSIONS ARE APPROXIMATE, ACTUAL MAY VARY.

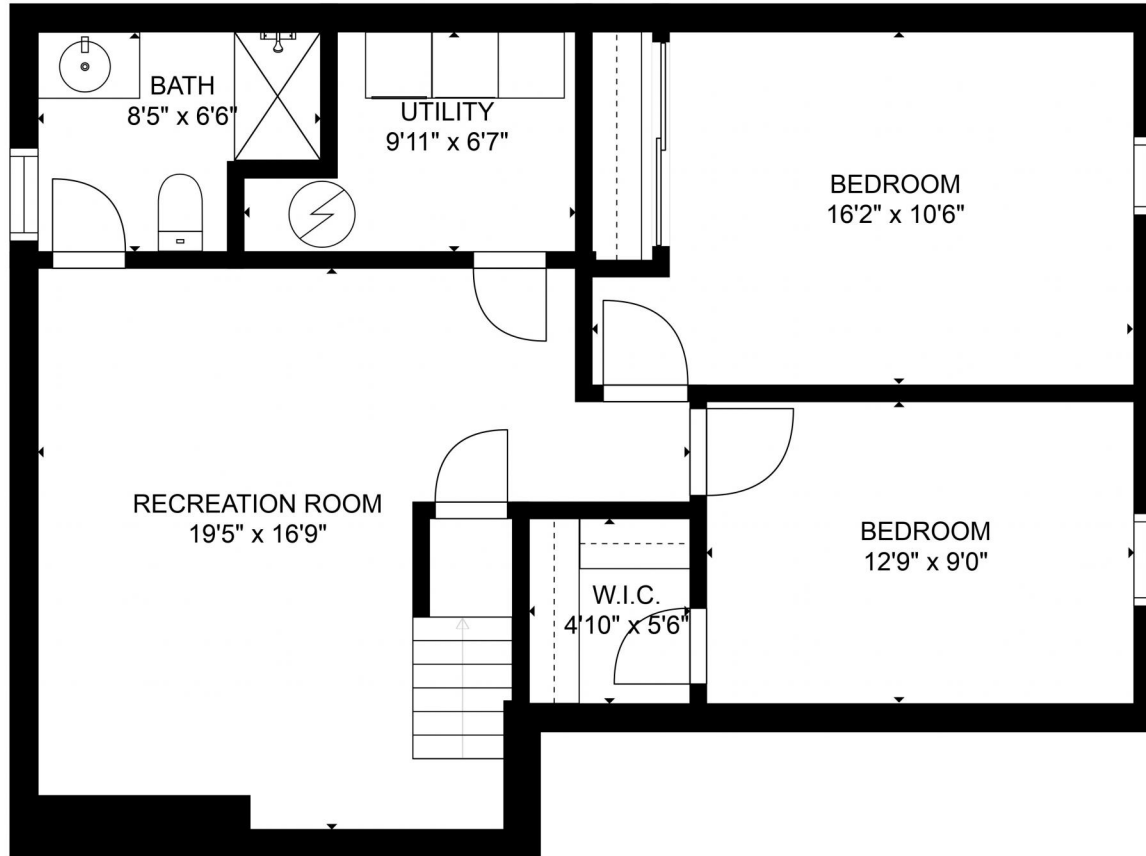


Disclaimer: Sizes and Dimensions are Approximate, Actual May Vary.

Carly Hahl
303-877-2631
carlyabelzer@gmail.com



3616 Leyden Street, Denver, CO 80207 – Bottom Floor



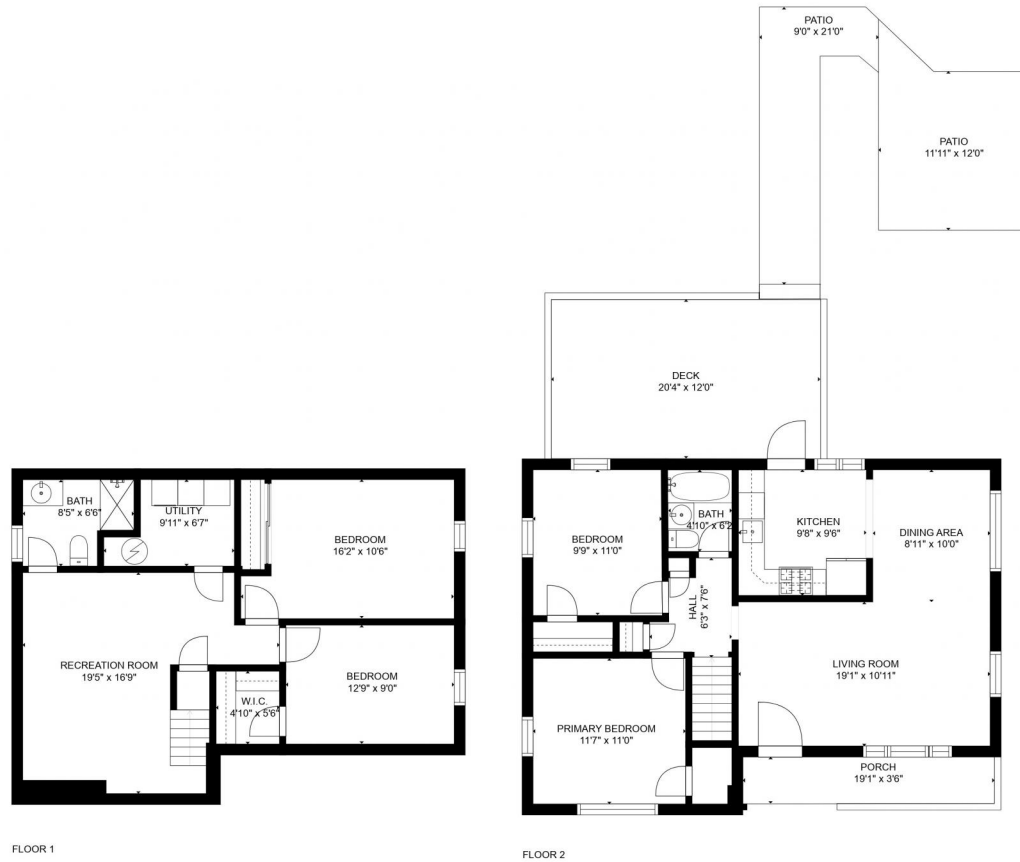
Estimated areas
GLA FLOOR 1: 0 sq. ft, excluded 804 sq. ft
GLA FLOOR 2: 893 sq. ft, excluded 583 sq. ft
Total GLA 893 sq. ft, total scanned area 2280 sq. ft
SIZES AND DIMENSIONS ARE APPROXIMATE, ACTUAL MAY VARY.



Disclaimer: Sizes and Dimensions are Approximate, Actual May Vary.

Carly Hahl
303-877-2631
carlyabelzer@gmail.com





Estimated areas

GLA FLOOR 1: 0 sq. ft, excluded 804 sq. ft
GLA FLOOR 2: 893 sq. ft, excluded 583 sq. ft
Total GLA 893 sq. ft, total scanned area 2280 sq. ft

SIZES AND DIMENSIONS ARE APPROXIMATE, ACTUAL MAY VARY.



Disclaimer: Sizes and Dimensions are Approximate, Actual May Vary.