



12425 Wild Trout Trail  
 Conifer, CO 80433  
 COMMUNITY: Pleasant Park

MLS # 5906716

PRICE

\$1,295,000



Single Family



5458 SQFT



6 Beds



5/1 Baths



3 Car



10.12 Acre

## PROPERTY DETAILS

BIG Price Improvement on this Colorado dream home! Winding up the paved driveway through the meadow with the seasonal creek, through the ten wooded acres and greeted by wildlife, you are welcomed home to this gorgeous & updated mountain home. This is an ideal home for entertaining or multi-generational living. Featuring soaring ceilings, wall of windows, Hunter Douglas blinds, open floor plan, expansive and remodeled kitchen, big deck (recently repaired and re-done), hickory wood floors, separate living quarters in basement, multiple en-suite bedrooms and so much more! Expansive & remodeled kitchen features a kitchen island, gas cooktop, granite countertops, hickory cabinets and hickory wood floors. During the summer relax on the wrap around deck watching the local wildlife and hummingbirds, overlooking the trees and enjoying the serenity of the mountains. The main level has a formal dining room, private office with built ins, main level primary bedroom suite, living room, laundry and powder room. Unwind in the main level primary bedroom featuring a jetted tub with fireplace view, big shower with dual shower heads and big walk in closet. Upstairs offers a loft/den area, bedroom with dual closets, and two more bedrooms with a jack and jill access to the full bath.

Separate living quarters downstairs offers potential rental income or multi-generational living opportunities in the walk out



**Kayla Maathuis**

303-507-2751

kaylasellshomes@gmail.com

<http://yourjourneyhome.net>

Scan code  
for more  
property  
details



basement featuring soaring ceilings, heated tile floors, kitchenette, big bedroom with en-suite bathroom & walk in closet, dry sauna, another bedroom and tons of storage. Radiant heat throughout means warm feet on those cold winter days when you get cozy next to one of the multiple fireplaces. Ideal Conifer location only 10 minutes to Highway 285 for access to the town of Conifer, shopping, retail, restaurants, or the high country. If you commute to town the county maintained road connecting Pleasant Park to Deer Creek Canyon offers a 20 minute commute to the Ken Caryl area.



**Kayla Maathuis**

303-507-2751

kaylasellshomes@gmail.com

<http://yourjourneyhome.net>



Scan code  
for more  
property  
details



# 12425 Wild Trout Trail, Conifer, CO 80433 – All Levels



### Estimated areas

GLA FLOOR 1: 0 sq. ft, excluded 2542 sq. ft  
 GLA FLOOR 2: 2201 sq. ft, excluded 1705 sq. ft  
 GLA FLOOR 3: 1185 sq. ft, excluded 664 sq. ft  
 Total GLA 3386 sq. ft, total scanned area 8297 sq. ft

SIZES AND DIMENSIONS ARE APPROXIMATE, ACTUAL MAY VARY.



Disclaimer: Sizes and Dimensions are Approximate, Actual May Vary.



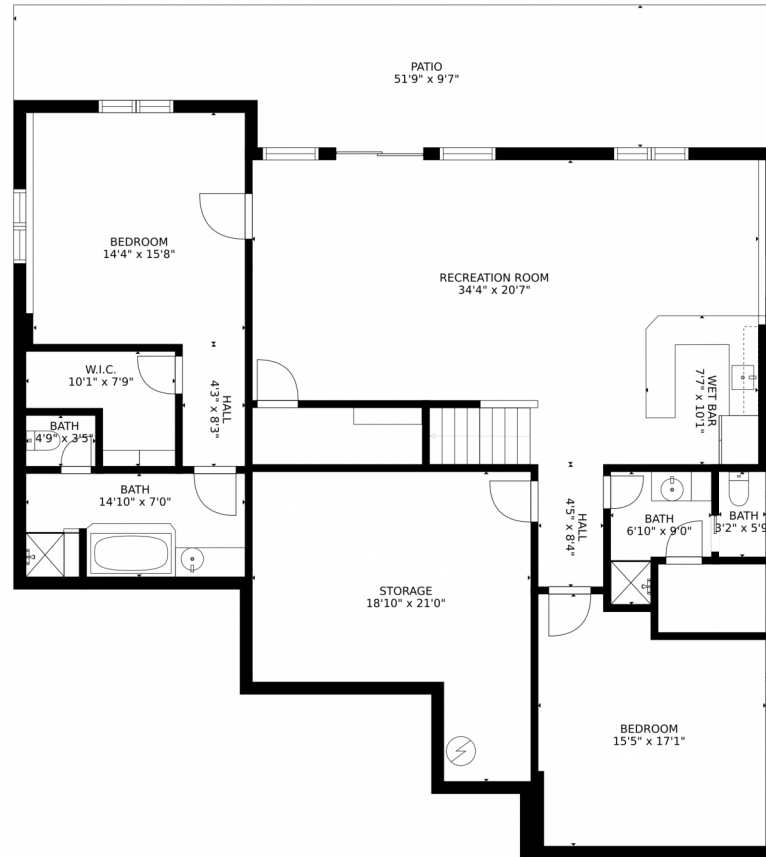
**Kayla Maathuis**  
 303-507-2751  
 kaylasellshomes@gmail.com  
<http://yourjourneyhome.net>



Scan code  
 for more  
 property  
 details



# 12425 Wild Trout Trail, Conifer, CO 80433 – Lower Level



### Estimated areas

GLA FLOOR 1: 0 sq. ft. excluded 2542 sq. ft.  
GLA FLOOR 2: 2201 sq. ft. excluded 1705 sq. ft.  
GLA FLOOR 3: 1185 sq. ft. excluded 664 sq. ft.  
Total GLA 3386 sq. ft. total scanned area 8297 sq. ft.

SIZES AND DIMENSIONS ARE APPROXIMATE, ACTUAL MAY VARY.



Disclaimer: Sizes and Dimensions are Approximate, Actual May Vary.



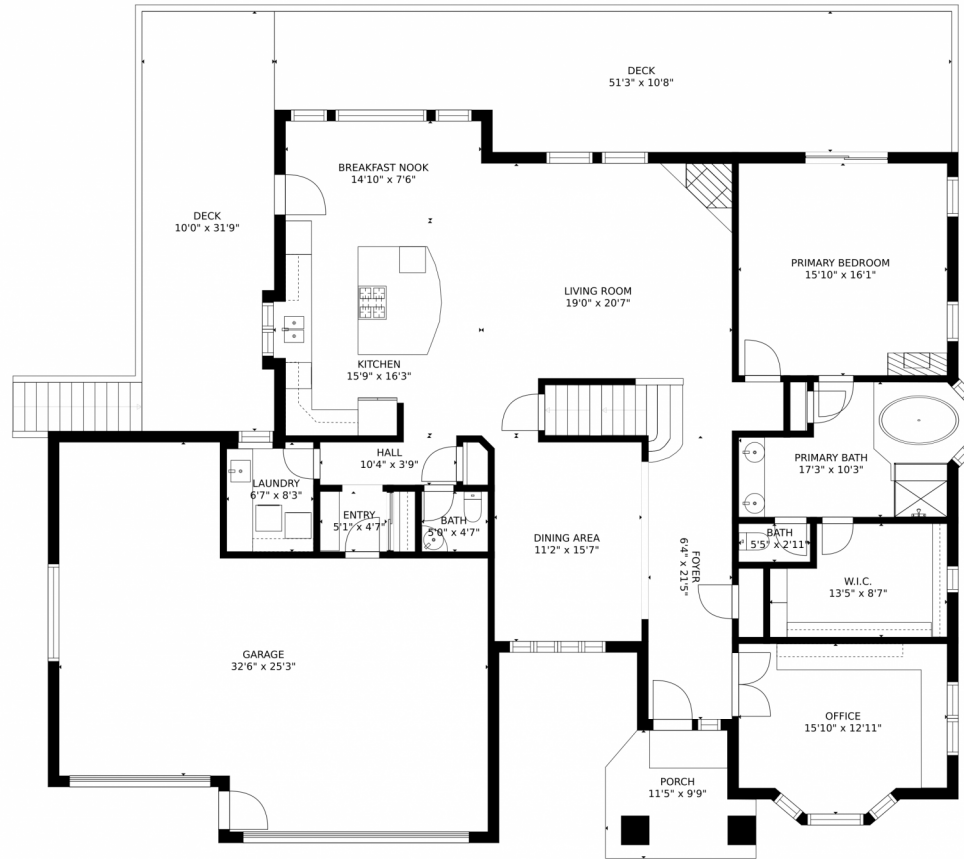
**Kayla Maathuis**  
303-507-2751  
kaylasellshomes@gmail.com  
<http://yourjourneyhome.net>



Scan code  
for more  
property  
details



# 12425 Wild Trout Trail, Conifer, CO 80433 – Main Level



### Estimated areas

GLA FLOOR 1: 0 sq. ft. excluded 2542 sq. ft.  
GLA FLOOR 2: 2201 sq. ft. excluded 1705 sq. ft.  
GLA FLOOR 3: 1185 sq. ft. excluded 664 sq. ft.  
Total GLA 3386 sq. ft. total scanned area 8297 sq. ft.

SIZES AND DIMENSIONS ARE APPROXIMATE, ACTUAL MAY VARY.



Disclaimer: Sizes and Dimensions are Approximate, Actual May Vary.



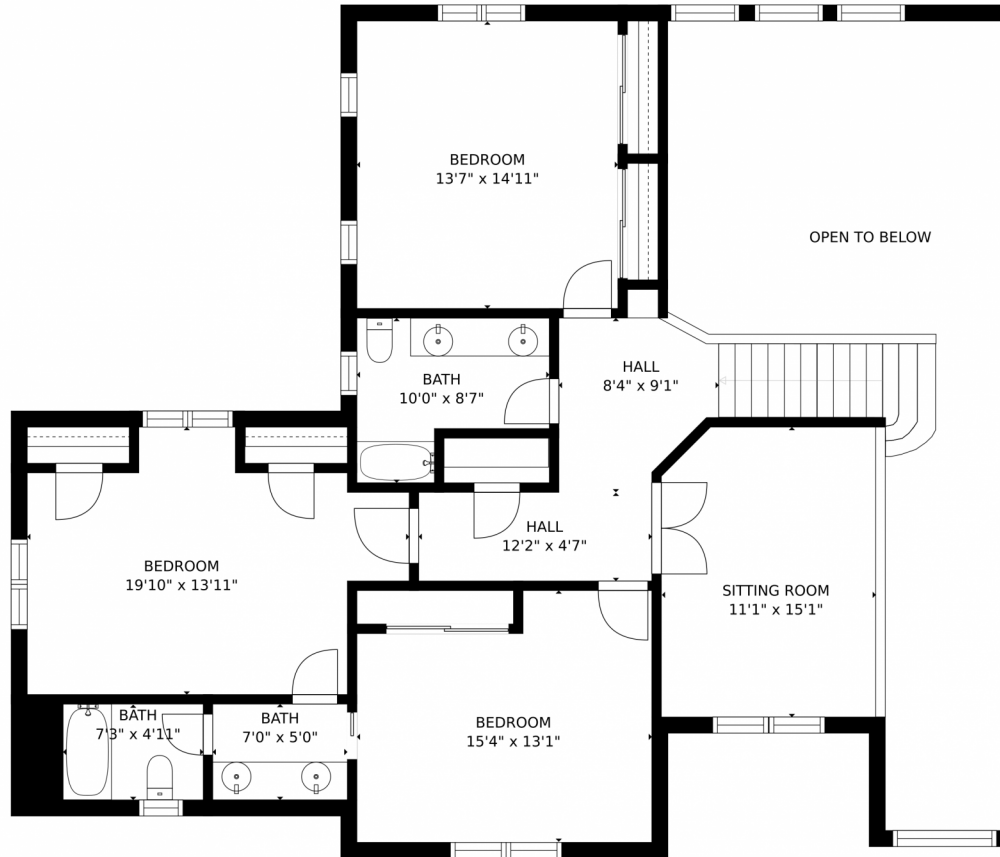
**Kayla Maathuis**  
303-507-2751  
kaylasellshomes@gmail.com  
<http://yourjourneyhome.net>



Scan code  
for more  
property  
details



12425 Wild Trout Trail, Conifer, CO 80433 – 2nd Level



Estimated areas

GLA FLOOR 1: 0 sq. ft., excluded 2542 sq. ft.  
GLA FLOOR 2: 2201 sq. ft., excluded 1705 sq. ft.  
GLA FLOOR 3: 1185 sq. ft., excluded 664 sq. ft.  
Total GLA 3386 sq. ft., total scanned area 8297 sq. ft.

SIZES AND DIMENSIONS ARE APPROXIMATE, ACTUAL MAY VARY.



Disclaimer: Sizes and Dimensions are Approximate, Actual May Vary.



**Kayla Maathuis**  
303-507-2751  
kaylasellshomes@gmail.com  
<http://yourjourneyhome.net>



Scan code  
for more  
property  
details

