



7085 S Costilla Street
 Littleton, CO 80120
 COMMUNITY: Ridgewood Park

MLS # 2516473
 PRICE \$700,000



Single Family



3024 SQFT



4 Beds



3 Baths



2 Car



0.3 Acre

PROPERTY DETAILS

Welcome home to the highly desirable and established Ridgewood Park community of Littleton! This sparkling tri-level abode has been recently remastered from head to toe boasting all new lighting, new Quartz countertops, all new lighting throughout the home, new interior paint, new carpet, and many updates to the kitchen! This wonderfully planned layout offers three stories of finished living space with a suite style bedroom on both the upper and lower levels along with an open concept dining and kitchen space on the main level. There's so much storage available as well from the nearly 400 sq ft finished basement to the workshop just off of the garage that even offers a bathroom. Our personal favorite of this home is the outdoor living space featuring an expansive patio space just off of the even bigger sun room along with immaculately maintained and appealing landscaping to include a partial Xeriscaped design to save you time and money in maintenance along with a sizable garden area at the back of the lot. From your Westward facing sprawling sun room and back patio you can enjoy watching one of our ever famous Colorado sunsets over a Rocky Mountain horizon, it doesn't get better than this. You will love living in Ridgewood Park with an unbelievable amount of parks, reservoirs and ponds, and trails practically in your backyard from Chatfield and the Denver Botanic Gardens just a 12 minutes drive away to the sprawling Reynolds Landing Park that starts at the Platte River



Tatyana Sturm

720-350-5909

tatyana@exitrealtydtc.com

<https://thestorckteam.com>

Scan code
 for more
 property
 details



and extends past Santa Fe all the way to Ashbaugh Park off of Windermere, you can really opt outside and live your best Colorado lifestyle. Shop until you drop at the Aspen Grove Outdoor Retail District offering plenty of higher-end chain restaurants and even the Alamo Drafthouse for dinner and a movie. The famous Breckenridge Brewery is also located just across Santa Fe only a 5 minute drive from your new home, you will never wonder what to do today again with this fantastic Littleton location!



Tatyana Sturm

720-350-5909

tatyana@exitrealtydtc.com

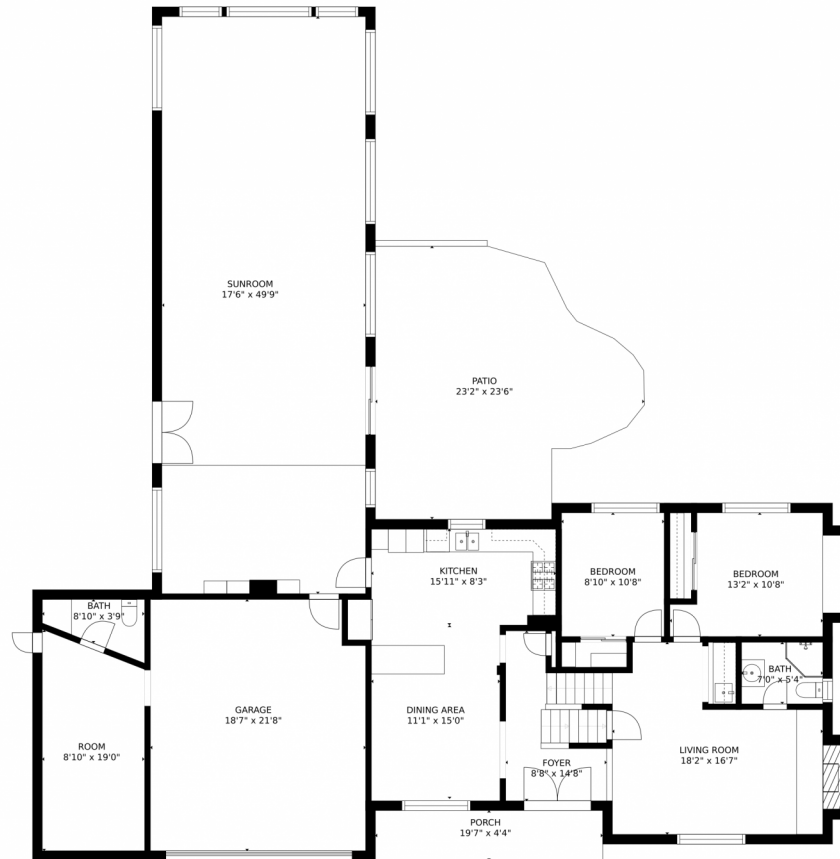
<https://thestorckteam.com>



Scan code
for more
property
details



7085 S Costilla Street, Littleton, CO 80120 – 1st Floor



GROSS INTERNAL AREA
FLOOR 1: 391 sq. ft., FLOOR 2: 2094 sq. ft.
FLOOR 3: 703 sq. ft., EXCLUDED AREAS:
GARAGE: 394 sq. ft., PATIO: 427 sq. ft.
PORCH: 84 sq. ft.
TOTAL: 3188 sq. ft.
SIZES AND DIMENSIONS ARE APPROXIMATE, ACTUAL MAY VARY.

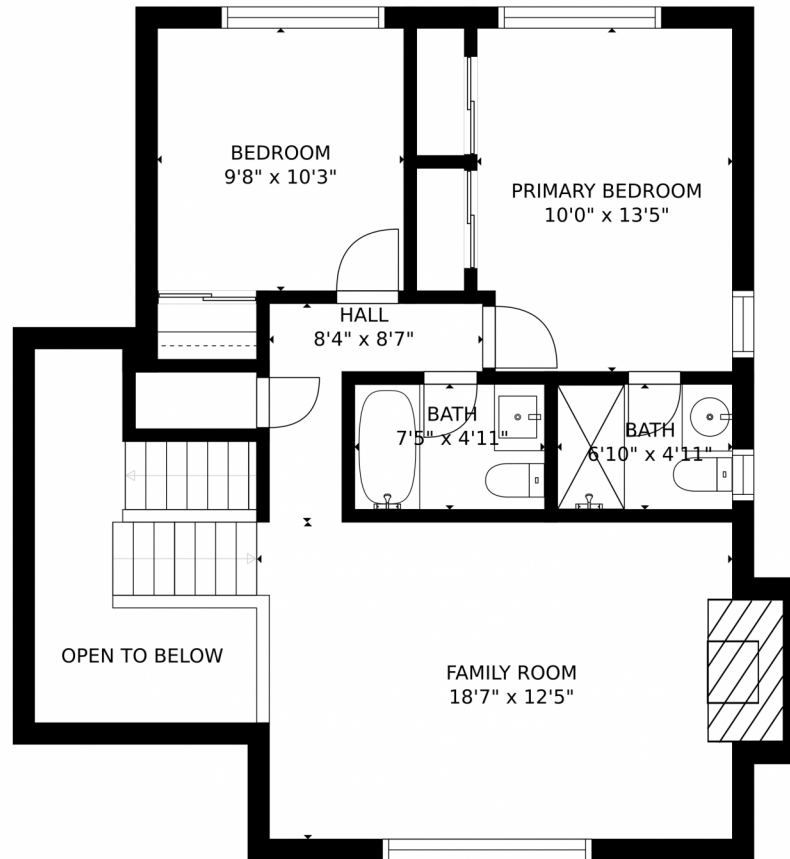


Disclaimer: Sizes and Dimensions are Approximate, Actual May Vary.



Tatyana Sturm
720-350-5909
tatyana@exitrealttydc.com
<https://thestorckteam.com>





GROSS INTERNAL AREA
FLOOR 1: 391 sq. ft., FLOOR 2: 2094 sq. ft.
FLOOR 3: 703 sq. ft., EXCLUDED AREAS:
GARAGE: 394 sq. ft., PATIO: 427 sq. ft.
PORCH: 84 sq. ft.
TOTAL: 3188 sq. ft.
SIZES AND DIMENSIONS ARE APPROXIMATE, ACTUAL MAY VARY.

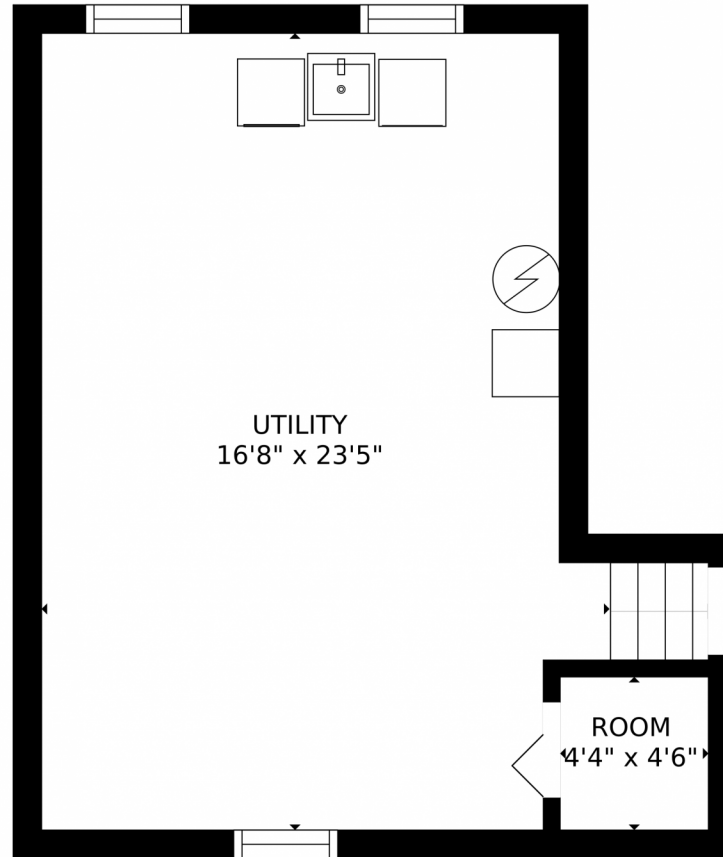


Disclaimer: Sizes and Dimensions are Approximate, Actual May Vary.



Tatyana Sturm
720-350-5909
tatyana@exitrealtydtc.com
<https://thestorckteam.com>





GROSS INTERNAL AREA
FLOOR 1: 391 sq. ft, FLOOR 2: 2094 sq. ft
FLOOR 3: 703 sq. ft, EXCLUDED AREAS:
GARAGE: 394 sq. ft, PATIO: 427 sq. ft
PORCH: 84 sq. ft
TOTAL: 3188 sq. ft
SIZES AND DIMENSIONS ARE APPROXIMATE, ACTUAL MAY VARY.



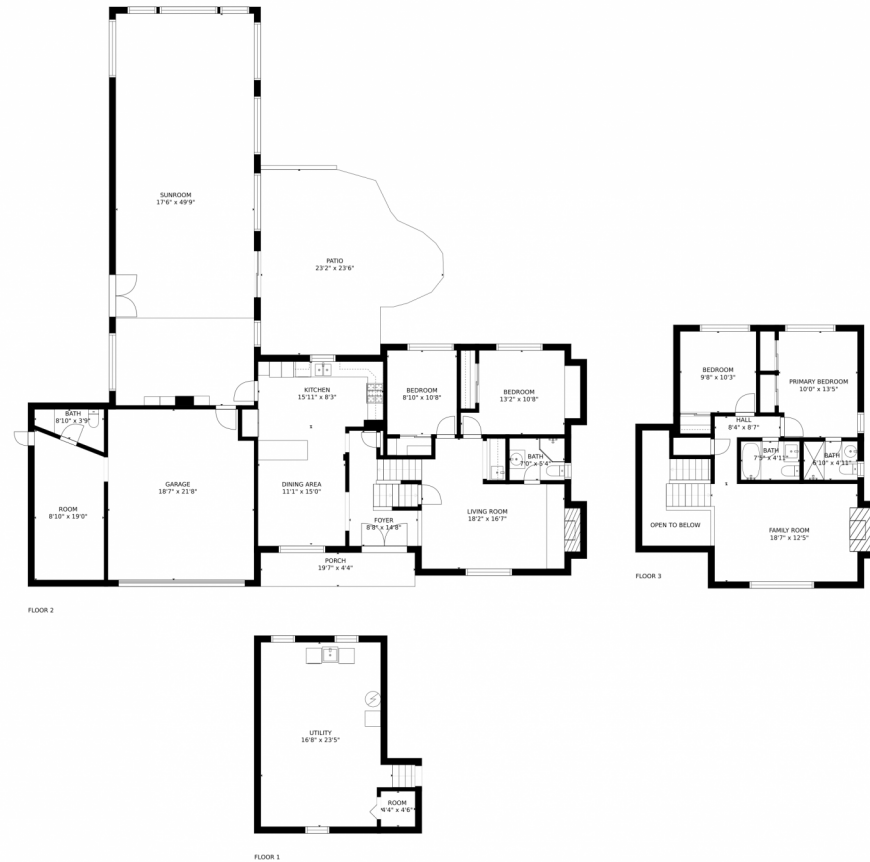
Disclaimer: Sizes and Dimensions are Approximate, Actual May Vary.



Tatyana Sturm
720-350-5909
tatyana@exitrealtydtc.com
<https://thestorckteam.com>



7085 S Costilla Street, Littleton, CO 80120 – All Floors



GROSS INTERNAL AREA
FLOOR 1: 391 sq. ft, FLOOR 2: 2094 sq. ft
FLOOR 3: 703 sq. ft, EXCLUDED AREAS:
GARAGE: 394 sq. ft, PATIO: 427 sq. ft
PORCH: 84 sq. ft
TOTAL: 3188 sq. ft
SIZES AND DIMENSIONS ARE APPROXIMATE, ACTUAL MAY VARY.



Disclaimer: Sizes and Dimensions are Approximate, Actual May Vary.



Tatyana Sturm
720-350-5909
tatyana@exitrealtydtc.com
<https://thestorckteam.com>

