




7318 Murdoch Drive  
Colorado Springs, CO 80920



 Single Family

 2680 SQFT

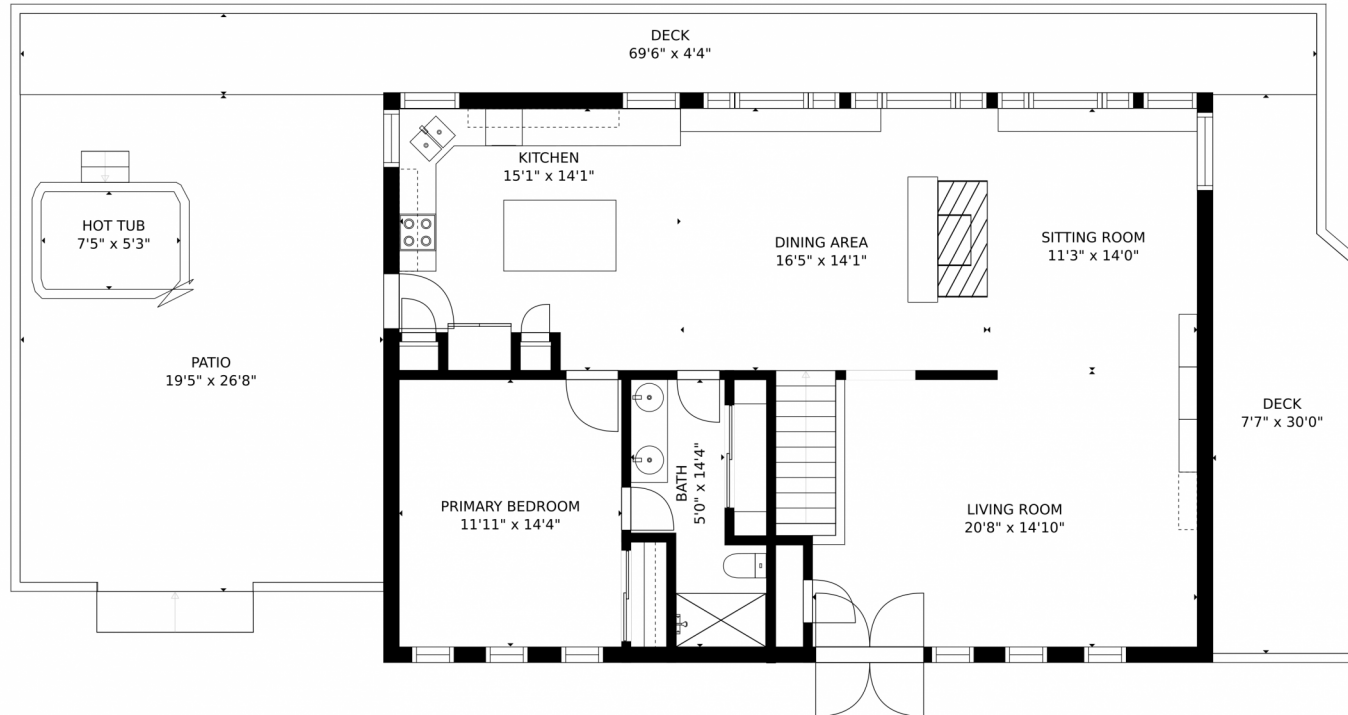
 1.07 Acre



**Shelby Hoover**  
719-313-7057  
shelby.hoover@windermere.com



# 7318 Murdoch Drive, Colorado Springs, CO 80920 – Main Level



### Estimated areas

GLA FLOOR 1: 0 sq. ft, excluded 1844 sq. ft  
GLA FLOOR 2: 1360 sq. ft, excluded 1497 sq. ft  
Total GLA 1360 sq. ft, total scanned area 4701 sq. ft

SIZES AND DIMENSIONS ARE APPROXIMATE, ACTUAL MAY VARY.



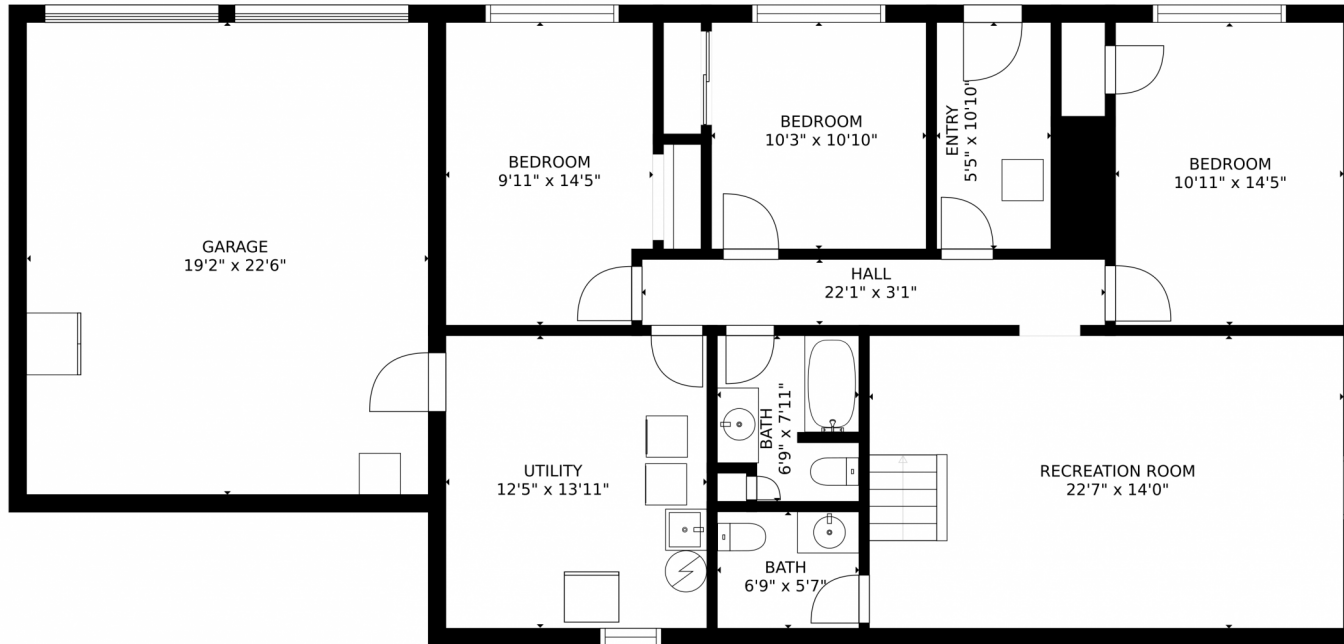
Disclaimer: Sizes and Dimensions are Approximate, Actual May Vary.



**Shelby Hoover**  
719-313-7057  
shelby.hoover@windermere.com



# 7318 Murdoch Drive, Colorado Springs, CO 80920 – Lower Level



### Estimated areas

GLA FLOOR 1: 0 sq. ft, excluded 1844 sq. ft  
GLA FLOOR 2: 1360 sq. ft, excluded 1497 sq. ft  
Total GLA 1360 sq. ft, total scanned area 4701 sq. ft

SIZES AND DIMENSIONS ARE APPROXIMATE, ACTUAL MAY VARY.



Disclaimer: Sizes and Dimensions are Approximate, Actual May Vary.

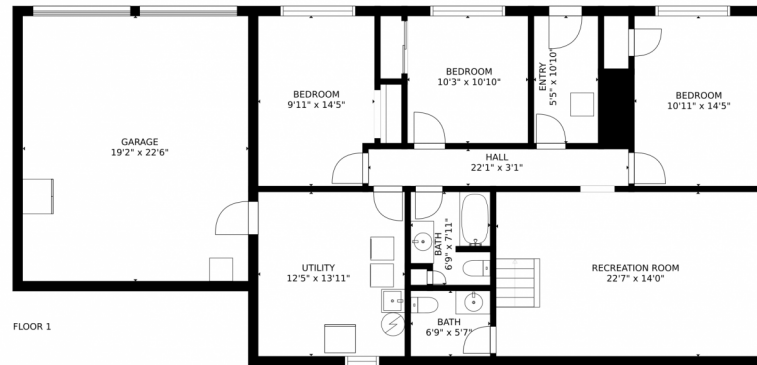
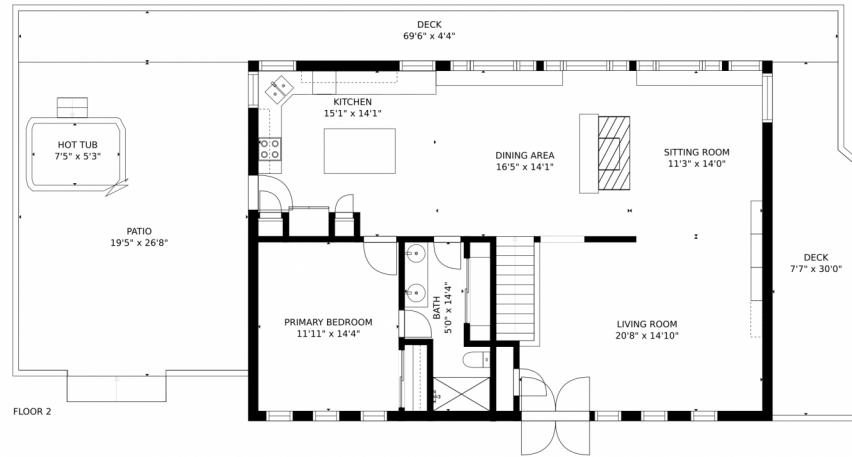


**Shelby Hoover**  
719-313-7057  
shelby.hoover@windermere.com





# 7318 Murdoch Drive, Colorado Springs, CO 80920 – All Levels



### Estimated areas

GLA FLOOR 1: 0 sq. ft, excluded 1844 sq. ft  
GLA FLOOR 2: 1360 sq. ft, excluded 1497 sq. ft  
Total GLA 1360 sq. ft, total scanned area 4701 sq. ft

SIZES AND DIMENSIONS ARE APPROXIMATE, ACTUAL MAY VARY.



Disclaimer: Sizes and Dimensions are Approximate, Actual May Vary.



**Shelby Hoover**  
719-313-7057  
shelby.hoover@windermere.com

