



Single Family



5712 SQFT



4 Beds



3/1 Baths



3 Car



5 Acre

## PROPERTY DETAILS

Most people have never heard of this community bordering Evergreen. It enjoys a remote and private foothills feeling, yet it's only 30 minutes to downtown Denver! This home is ideally situated on 5 acres in the Spring Ranch neighborhood surrounded by nature and wildlife. This gorgeously updated 4BD/4BTH Mountain Contemporary Home has it all and has been freshly painted inside. Floor-to-Ceiling windows bring the scenic foothills setting inside, showcasing an abundance of natural light through a bright and airy floor plan. Just beyond the foyer, the huge living room with vaulted ceilings, brand new hardwood floors and cozy gas fireplace awaits. The chef's kitchen boasts soft-close cabinets and drawers, top-of-the-line Wolf Appliances, Sub-Zero fridge and wine cooler and spectacular views. Experience the main floor Master/Primary Bedroom featuring a 5-piece ensuite, enormous walk-in-closet (with built-ins), gas fireplace and separate deck entrance. A private office, separate dining room, half bath and laundry are also on the main level. The walkout basement features a 2nd Master/Primary Suite with attached ¾ bath, double closet with more spectacular views! Spend winter nights nestled in the large rec room with cozy Telluride stone gas fireplace, wet bar, wine cooler and large flat screen TV with built in sound system. The media room is sure to impress – equipment and seating stay! Perfect for out of town visitors, two more guest bedrooms and ¾ bath



**John Wann**  
 720-456-0156  
 johnwann@kw.com



Scan code  
 for more  
 property  
 details



complete the lower level. Made for entertaining with wonderful indoor-outdoor flow, soak in the best of Colorado living and enjoy stunning views from the enormous Trex deck, located just off the living room. The driveway features flagstone inlays, leading to the large 3-car garage with epoxy coated floors. Easy access to I-70, just 30 min. West of Downtown Denver and 1 hour to most major ski resorts in Summit County, this home has everything and more! Don't miss the chance to make this house the one you call home.



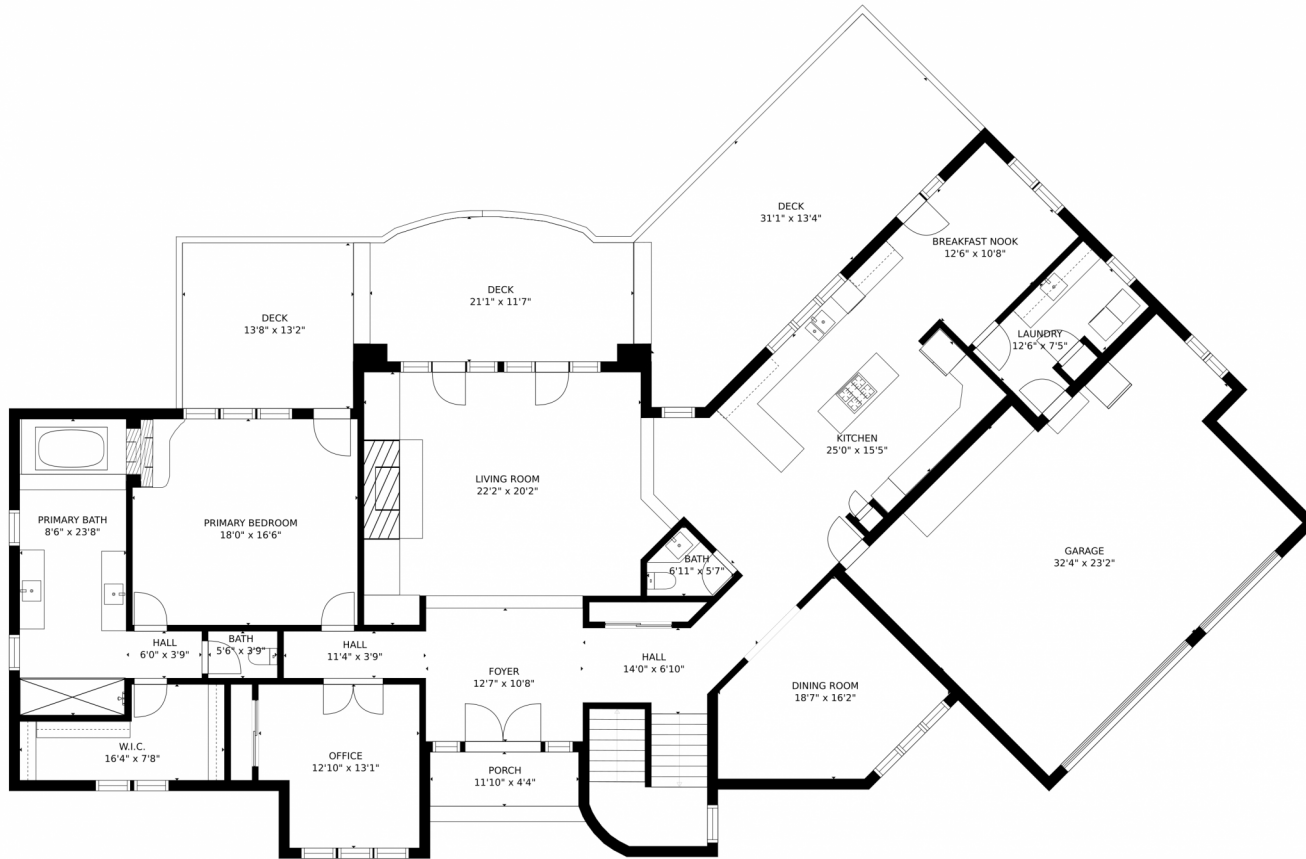
**John Wann**  
720-456-0156  
johnwann@kw.com



Scan code  
for more  
property  
details



# 27846 Meadowlark Drive, Golden, CO 80401 – Main Level



### Estimated areas

GLA FLOOR 1: 2769 sq. ft, excluded 53 sq. ft  
GLA FLOOR 2: 2807 sq. ft, excluded 1598 sq. ft  
Total GLA 5576 sq. ft, total scanned area 7227 sq. ft

SIZES AND DIMENSIONS ARE APPROXIMATE, ACTUAL MAY VARY.

Disclaimer: Sizes and Dimensions are Approximate, Actual May Vary.



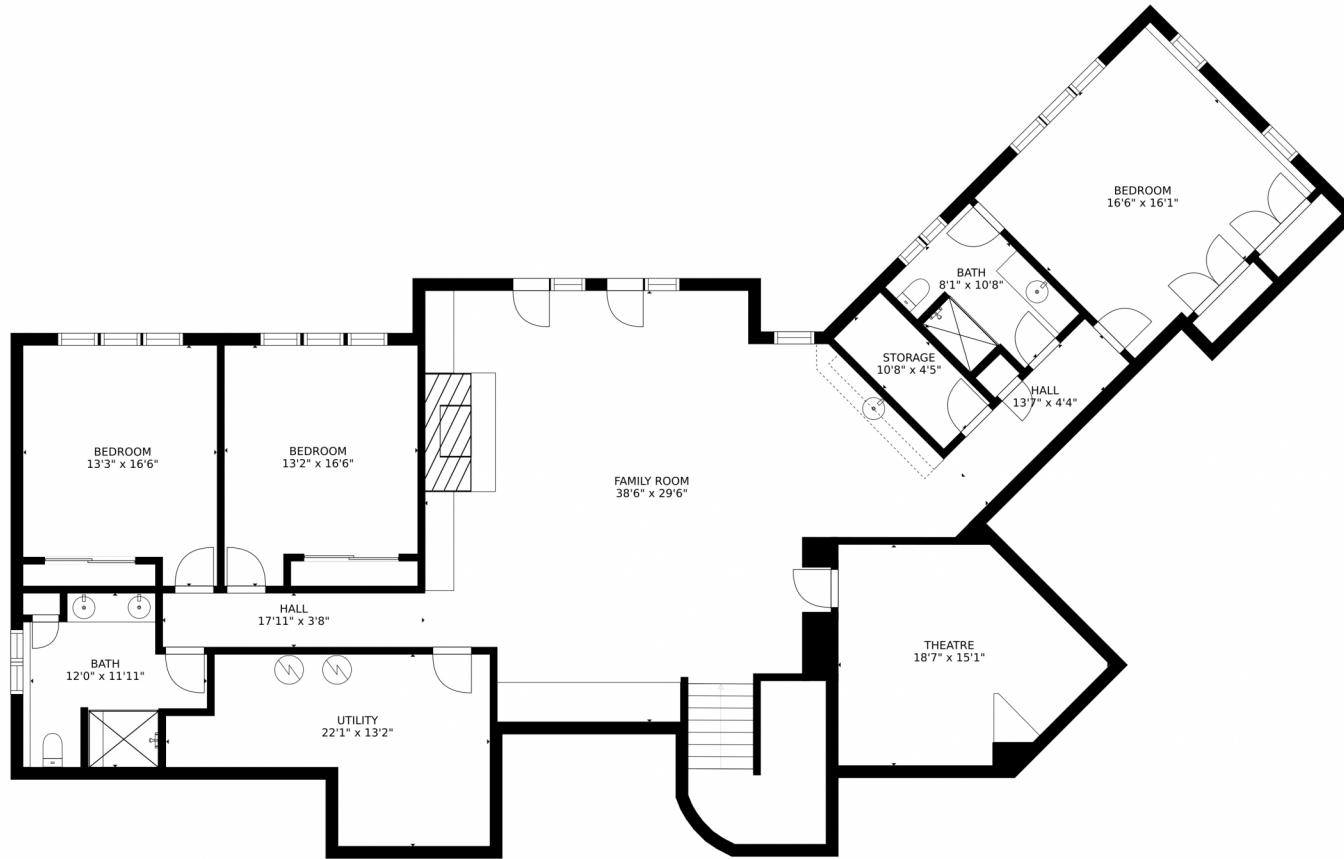
**John Wann**  
720-456-0156  
johnwann@kw.com



Scan code  
for more  
property  
details



27846 Meadowlark Drive, Golden, CO 80401 – Lower Level



Estimated areas

GLA FLOOR 1: 2769 sq. ft, excluded 53 sq. ft  
GLA FLOOR 2: 2807 sq. ft, excluded 1598 sq. ft  
Total GLA 5576 sq. ft, total scanned area 7227 sq. ft

SIZES AND DIMENSIONS ARE APPROXIMATE, ACTUAL MAY VARY.



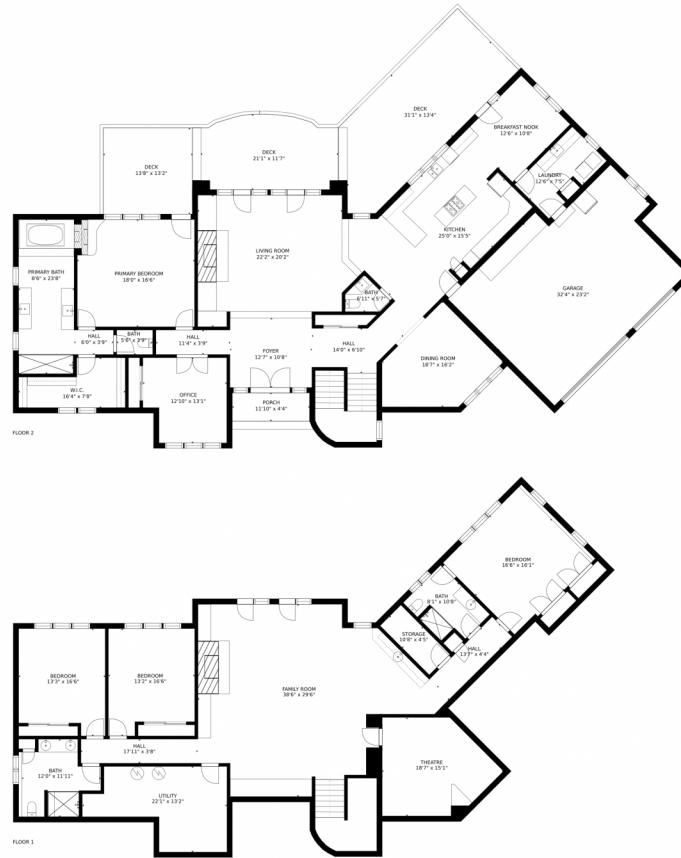
Disclaimer: Sizes and Dimensions are Approximate, Actual May Vary.



**John Wann**  
720-456-0156  
johnwann@kw.com



# 27846 Meadowlark Drive, Golden, CO 80401 – All Levels



### Estimated areas

GLA FLOOR 1: 2769 sq. ft, excluded 53 sq. ft  
GLA FLOOR 2: 2807 sq. ft, excluded 1598 sq. ft  
Total GLA 5576 sq. ft, total scanned area 7227 sq. ft

SIZES AND DIMENSIONS ARE APPROXIMATE, ACTUAL MAY VARY.

Disclaimer: Sizes and Dimensions are Approximate, Actual May Vary.



**John Wann**  
720-456-0156  
johnwann@kw.com

