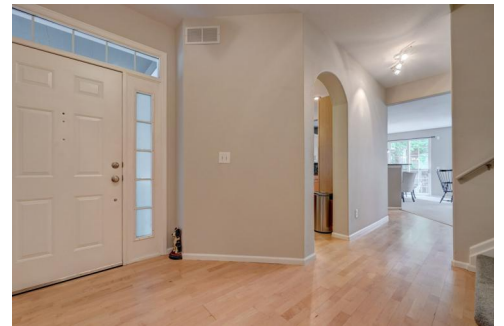




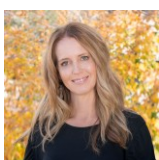
2855 Rock Creek Circle
 Superior, CO 80027
 COMMUNITY: Rock Creek



Townhouse 2762 SQFT 3 Beds 3/1 Baths 2 Car

PROPERTY DETAILS

Spacious Townhouse in Summit at Rock Creek. Open the door to stunning wood floors. Spacious open kitchen with granite counters, S/S appliances and glass backsplash. Eat in kitchen PLUS a separate dining room and bar offers great entertaining space. Family room features a gas fireplace and tons of natural light. Upstairs features 3 bedrooms. Primary suite has vaulted ceilings and double door entry. Attached 5 pc primary bath with LARGE walk in closet. Large 2 additional bedrooms with vaulted ceilings and tons of light. Updated full bath. Spacious basement with LARGE rec room and family space, wood floors, full wet bar, 3/4 bath and laundry room with washer and dryer. Private back deck for summer evenings. Community includes a pool, clubhouse, exercise room and park areas. Close to trails, shopping and more.



Terri Ellerington
 303-929-8116

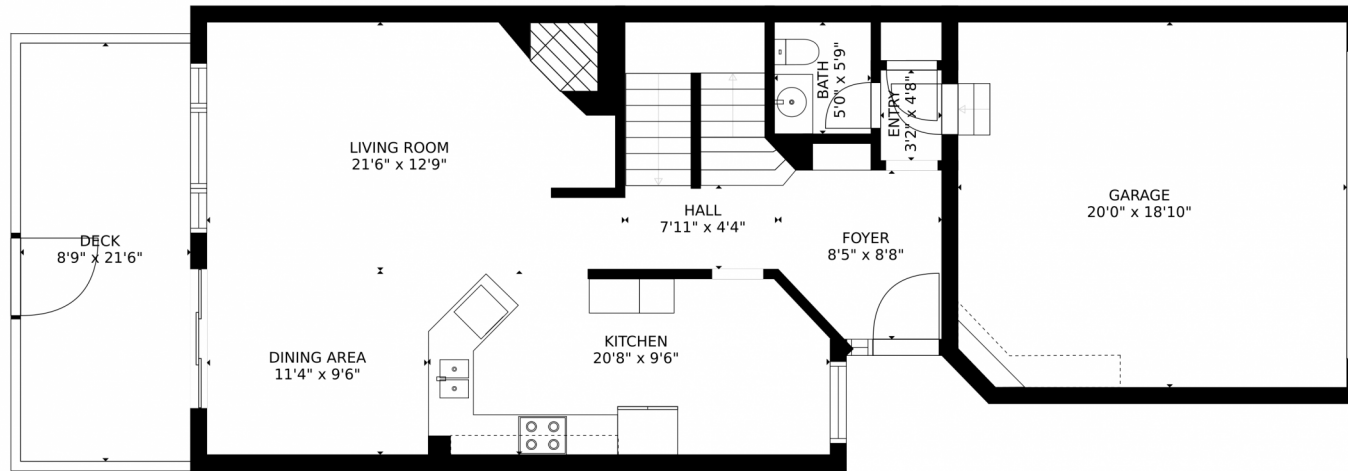
terri@elevated-team.com

<https://www.remax.com/real-estate-agents/terri-ellerington-louisville-co/10205130>

Scan code
 for more
 property
 details



2855 Rock Creek Circle, Superior, CO 80027 – 1st Floor



Estimated areas

GLA FLOOR 1: 0 sq. ft, excluded 837 sq. ft
GLA FLOOR 2: 910 sq. ft, excluded 613 sq. ft
GLA FLOOR 3: 1101 sq. ft, excluded 0 sq. ft
Total GLA 2011 sq. ft, total scanned area 3461 sq. ft

SIZES AND DIMENSIONS ARE APPROXIMATE, ACTUAL MAY VARY.



Disclaimer: Sizes and Dimensions are Approximate, Actual May Vary.



Terri Ellerington

303-929-8116

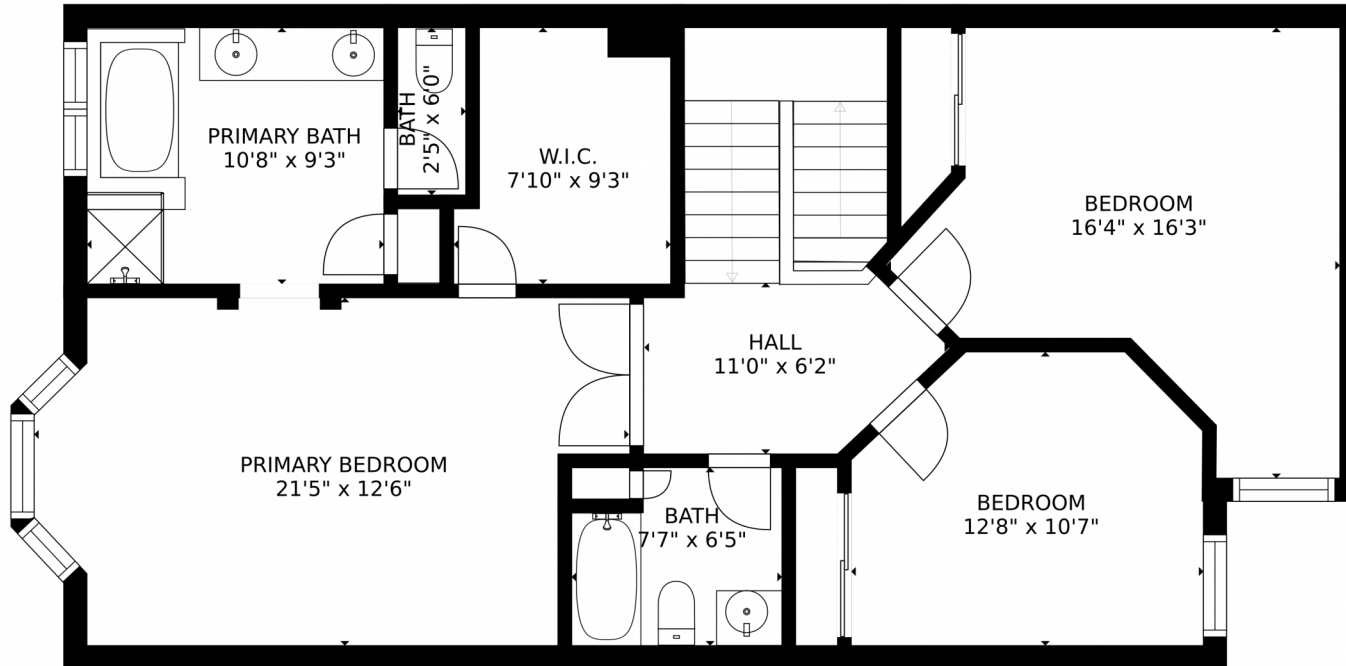
terri@elevated-team.com

<https://www.remax.com/real-estate-agents/terri-ellerington-louisville-co/102051301>



Scan code
for more
property
details





Estimated areas

GLA FLOOR 1: 0 sq. ft, excluded 837 sq. ft.
GLA FLOOR 2: 910 sq. ft, excluded 613 sq. ft.
GLA FLOOR 3: 1101 sq. ft, excluded 0 sq. ft.
Total GLA 2011 sq. ft, total scanned area 3461 sq. ft.

SIZES AND DIMENSIONS ARE APPROXIMATE, ACTUAL MAY VARY.



Disclaimer: Sizes and Dimensions are Approximate, Actual May Vary.



Terri Ellerington

303-929-8116

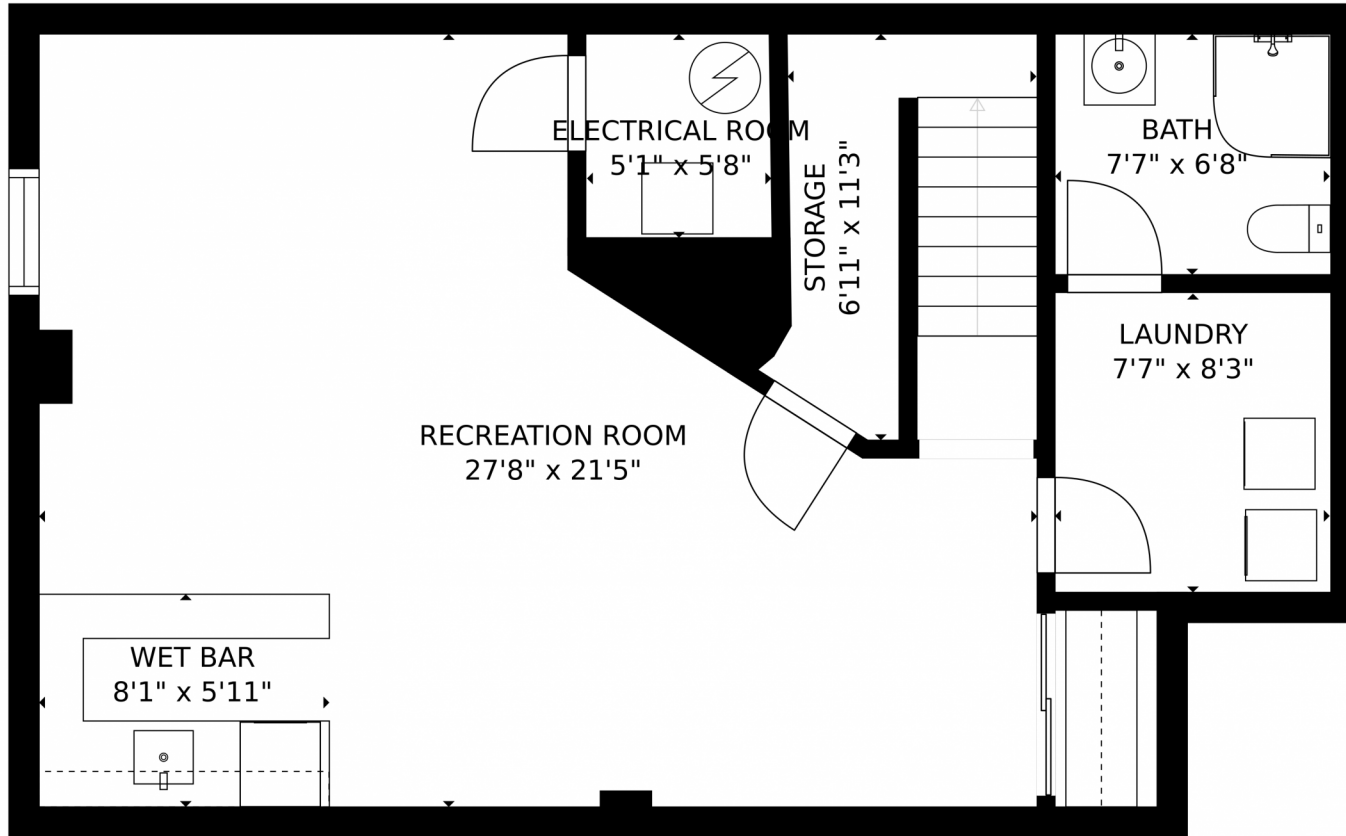
terri@elevated-team.com

<https://www.remax.com/real-estate-agents/terri-ellerington-louisville-co/102051301>



Scan code
for more
property
details





Estimated areas

GLA FLOOR 1: 0 sq. ft, excluded 837 sq. ft.
GLA FLOOR 2: 910 sq. ft, excluded 613 sq. ft.
GLA FLOOR 3: 1101 sq. ft, excluded 0 sq. ft.
Total GLA 2011 sq. ft, total scanned area 3461 sq. ft.

SIZES AND DIMENSIONS ARE APPROXIMATE, ACTUAL MAY VARY.

Disclaimer: Sizes and Dimensions are Approximate, Actual May Vary.



Terri Ellerington

303-929-8116

terri@elevated-team.com

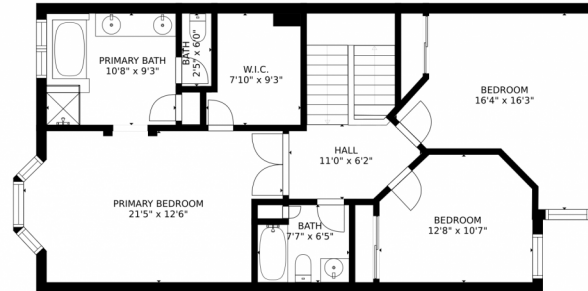
<https://www.remax.com/real-estate-agents/terri-ellerington-louisville-co/102051301>



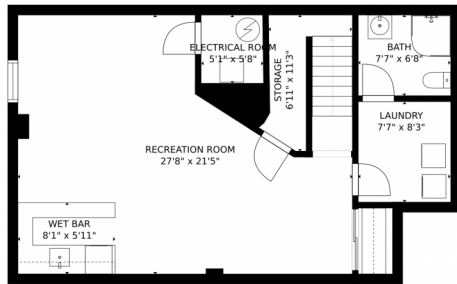
Scan code
for more
property
details



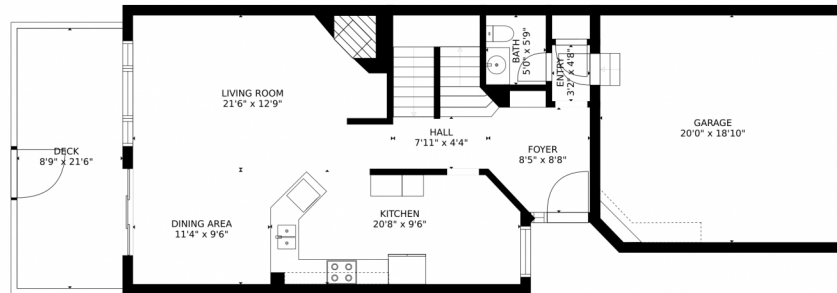
2855 Rock Creek Circle, Superior, CO 80027 – All Floors



FLOOR 3



FLOOR 1



FLOOR 2

Estimated areas

GLA FLOOR 1: 0 sq. ft, excluded 837 sq. ft.
 GLA FLOOR 2: 910 sq. ft, excluded 613 sq. ft.
 GLA FLOOR 3: 1101 sq. ft, excluded 0 sq. ft.
 Total GLA 2011 sq. ft, total scanned area 3461 sq. ft.

SIZES AND DIMENSIONS ARE APPROXIMATE, ACTUAL MAY VARY.



Disclaimer: Sizes and Dimensions are Approximate, Actual May Vary.



Terri Ellerington

303-929-8116

terri@elevated-team.com

<https://www.remax.com/real-estate-agents/terri-ellerington-louisville-co/102051301>



Scan code
for more
property
details

