



6503 Weiser Drive
 Colorado Springs, CO 80925
 COMMUNITY: Lorson Ranch

MLS # 9799333
 PRICE \$515,000



Single Family 2768 SQFT 4 Beds 2/1 Baths 2 Car 0.18 Acre

PROPERTY DETAILS

Welcome home to the desirable and up-and-coming Lorson Ranch community of Southeast Colorado Springs! This phenomenal layout was truly designed with your every convenience in mind beginning with the main level offering a flex space just inside the home's entryway then further leading to the open concept, great room style main entertainment area flawlessly connecting the living room to the dining space and kitchen which are all showcasing beautiful and upgraded hardwood flooring. Upstairs the owner's suite is your personal oasis showcasing a sprawling suite set up complete with a private 5-piece bathroom and massive walk-in closet. Three generously sized additional bedrooms, the secondary full bathroom, and laundry room complete the upper level. The basement offers an additional 786 square feet of living space awaiting your finishing touch. You will love entertaining this Summer in your new backyard and outdoor living space boasting an expansive patio along with much of the yard covered in grass with partial Xeriscaping to save you time and money on maintenance, all nicely finished with a raised garden bed and several newer trees. The Lorson Ranch community is centrally located to all military operations in Colorado Springs just 6 miles from Schriever Air Force Base, 4 miles from Peterson Air Force Base, and 5 miles from Fort Carson; along with being just a short 10 minute drive from the Colorado Springs Airport. You will love living in Lorson



Tatyana Sturm
 720-350-5909
 tatyana@exitrealtydtc.com
 https://thestorckteam.com



Ranch just minutes from every lifestyle amenity of the Mesa Ridge Shopping Center to include Lowe's, Walgreen's, Safeway, and multiple eateries from fast food to dine in. Also within minutes is the Fountain Creek Park and Nature Center where you can opt outside and live your best Colorado lifestyle offering multiple trails and ponds with bird sighting. Residents of Lorson Ranch are walking distance to the Grand Mountain K-8 school and your home is just a 5 minute walk away through the end of middle school.



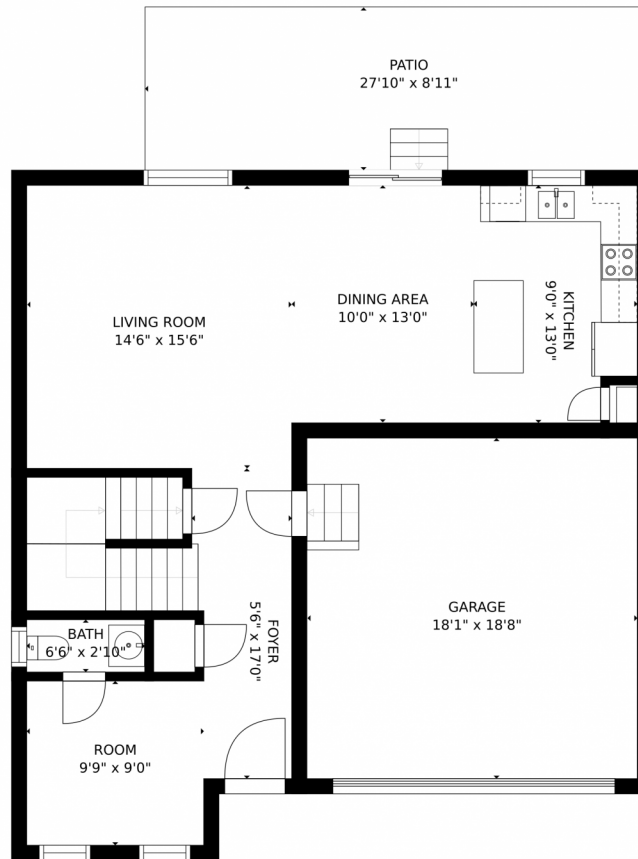
Tatyana Sturm
720-350-5909
tatyana@exitrealtydtc.com
<https://thestorckteam.com>



Scan code
for more
property
details



6503 Weiser Drive, Colorado Springs, CO 80925 – Main Level



Estimated areas

GLA FLOOR 1: 0 sq. ft, excluded 789 sq. ft
GLA FLOOR 2: 374 sq. ft, excluded 619 sq. ft
GLA FLOOR 3: 1257 sq. ft, excluded 0 sq. ft
Total GLA 2131 sq. ft, total scanned area 3530 sq. ft

SIZES AND DIMENSIONS ARE APPROXIMATE, ACTUAL MAY VARY.



Disclaimer: Sizes and Dimensions are Approximate, Actual May Vary.



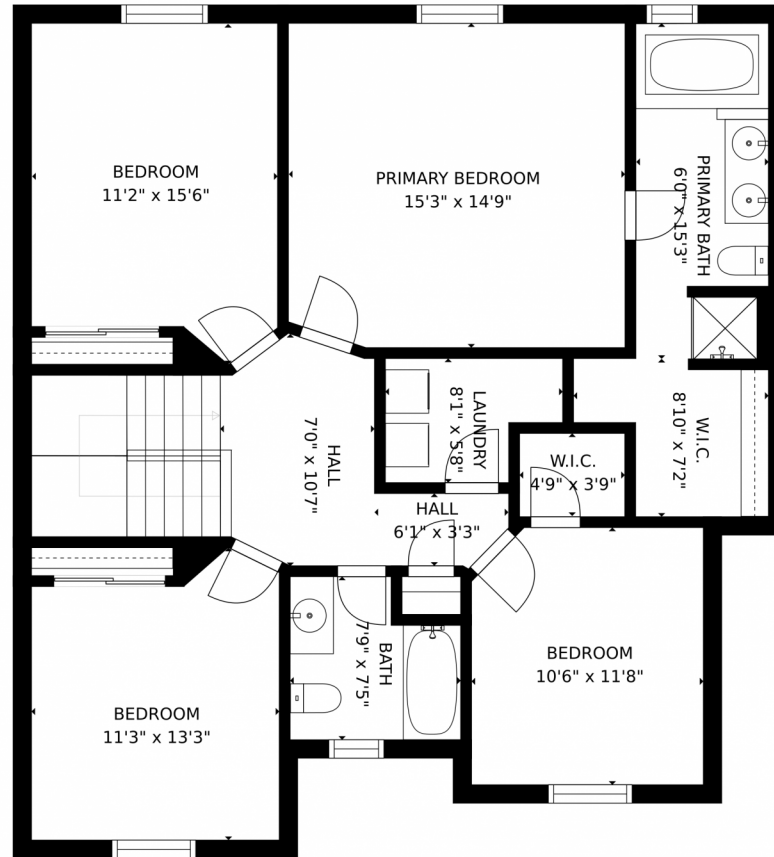
Tatyana Sturm
720-350-5909
tatyana@exitrealtydtc.com
<https://thestorckteam.com>



Scan code
for more
property
details



6503 Weiser Drive, Colorado Springs, CO 80925 – Upper Level



Estimated areas

GLA FLOOR 1: 0 sq. ft, excluded 789 sq. ft.
GLA FLOOR 2: 374 sq. ft, excluded 619 sq. ft.
GLA FLOOR 3: 1257 sq. ft, excluded 0 sq. ft.
Total GLA 2131 sq. ft, total scanned area 3530 sq. ft.

SIZES AND DIMENSIONS ARE APPROXIMATE, ACTUAL MAY VARY.



Disclaimer: Sizes and Dimensions are Approximate, Actual May Vary.



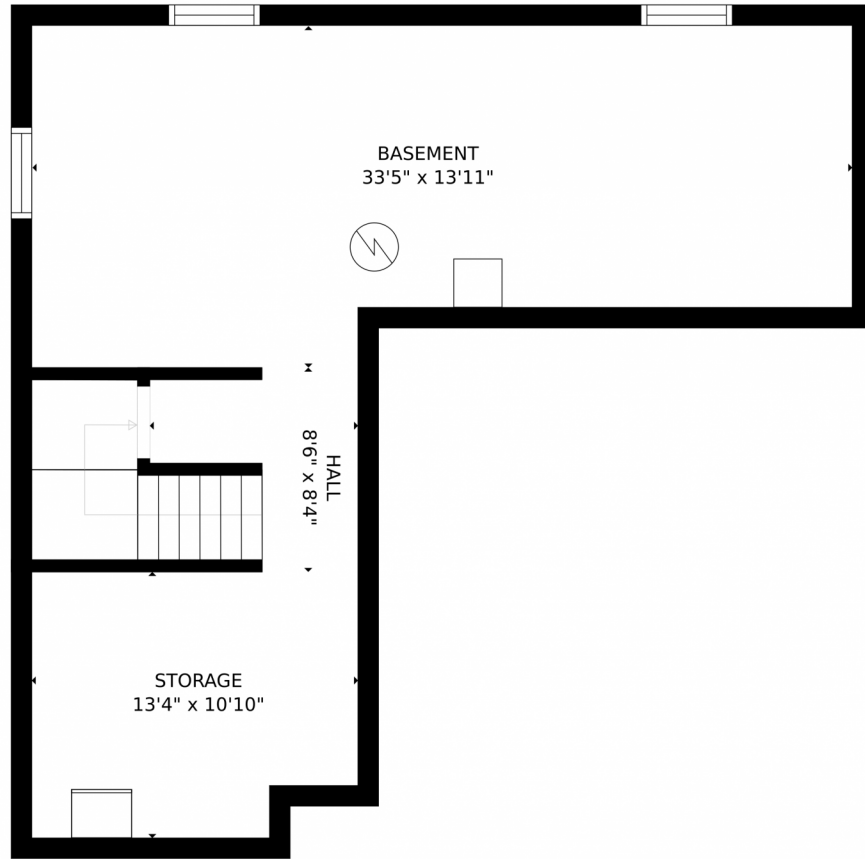
Tatyana Sturm
720-350-5909
tatyana@exitrealtydtc.com
<https://thestorckteam.com>



Scan code
for more
property
details



6503 Weiser Drive, Colorado Springs, CO 80925 — Lower Level



Estimated areas

GLA FLOOR 1: 0 sq. ft, excluded 780 sq. ft.
GLA FLOOR 2: 374 sq. ft, excluded 619 sq. ft.
GLA FLOOR 3: 1257 sq. ft, excluded 0 sq. ft.
Total GLA 2131 sq. ft, total scanned area 3530 sq. ft.

SIZES AND DIMENSIONS ARE APPROXIMATE, ACTUAL MAY VARY.



Disclaimer: Sizes and Dimensions are Approximate, Actual May Vary.



Tatyana Sturm
720-350-5909
tatyana@exitrealtydtc.com
<https://thestorckteam.com>



6503 Weiser Drive, Colorado Springs, CO 80925 – All Levels



Estimated areas

GLA FLOOR 1: 0 sq. ft, excluded 780 sq. ft
GLA FLOOR 2: 374 sq. ft, excluded 619 sq. ft
GLA FLOOR 3: 1257 sq. ft, excluded 0 sq. ft
Total GLA 2131 sq. ft, total scanned area 3530 sq. ft

SIZES AND DIMENSIONS ARE APPROXIMATE, ACTUAL MAY VARY.



Disclaimer: Sizes and Dimensions are Approximate, Actual May Vary.



Tatyana Sturm
720-350-5909
tatyana@exitrealttydc.com
<https://thestorckteam.com>

