



34445 Harrisville Road
 Calhan, CO 80808
 COMMUNITY: Calhan

MLS # 4883710



Single Family



4048 SQFT



5 Beds



3/1 Baths



4 Car



40 Acre

PROPERTY DETAILS

Welcome home to your better than new dream farmhouse located just about 40 minutes from Colorado Springs. Everything from the wrap-around porch, wood stove, hardwood floors, and tin roof upstairs make for idyllic country living. This thoughtfully designed home is built from concrete styrofoam blocks from the ground up making it extremely well insulated all year long. On the main level is a cozy living room, stylish dining room, gourmet kitchen, breakfast nook, owner's suite, and convenient mudroom with toilet and laundry. The gorgeous kitchen boasts cherry cabinets, solid surface countertops, butcher block island, breakfast bar, large pantry, dual fuel range, and custom range hood. The owner's suite has hardwood in the bedroom, private access out to a balcony, double closets, heated tile flooring, dual shower heads, and double corner vanity. There is plumbing for a tub to be installed. The two upstairs bedrooms and 3/4 bathroom showcase charming architectural details from the detailed tile work to the roofline and dormers. The basement has endless opportunity with the secondary kitchen, bedrooms 4 and 5, 3/4 bathroom, and separate entrance. Outside is a 40x60 metal building divided into three sections with a workshop in the back. The 40 acres is fully fenced and cross fenced. Bring your animals!



Erin Handlin

719-651-9683

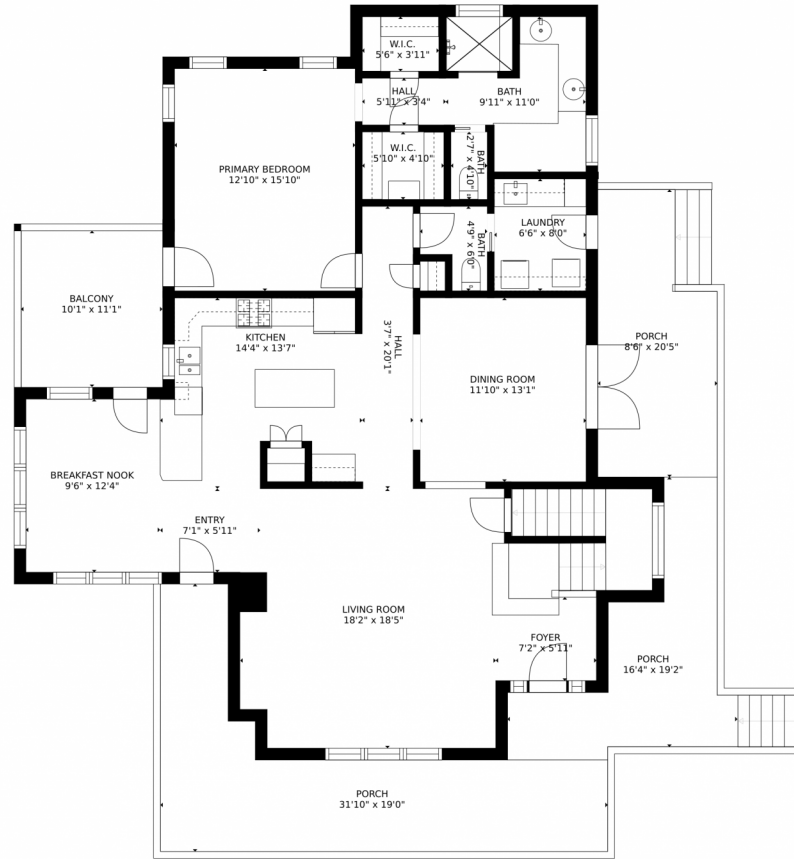
erin.handlin.realtor@gmail.com

<https://erinhandlin.fathomrealty.com>

Scan code
 for more
 property
 details



34445 Harrisville Road, Calhan, CO 80808 – Main Level



Estimated areas

GLA FLOOR 1: 0 sq. ft, excluded 2158 sq. ft.
GLA FLOOR 2: 1712 sq. ft, excluded 708 sq. ft.
GLA FLOOR 3: 482 sq. ft, excluded 217 sq. ft.
Total GLA 2194 sq. ft, total scanned area 5277 sq. ft.

SIZES AND DIMENSIONS ARE APPROXIMATE, ACTUAL MAY VARY.



Disclaimer: Sizes and Dimensions are Approximate, Actual May Vary.



Erin Handlin

719-651-9683

erin.handlin.realtor@gmail.com

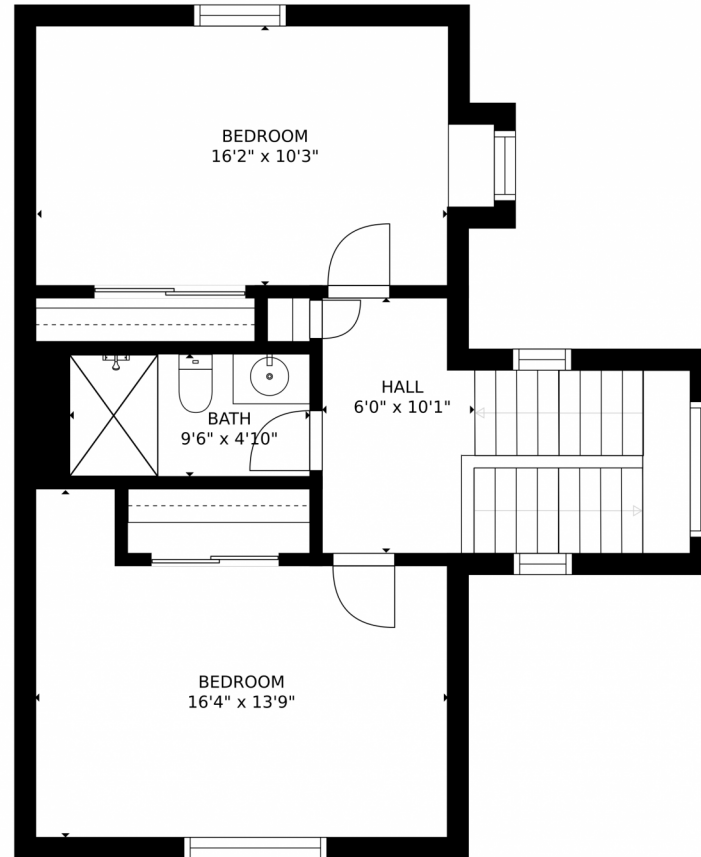
<https://erinhandlin.fathomrealty.com>



Scan code
for more
property
details



34445 Harrisville Road, Calhan, CO 80808 – Upper Level



Estimated areas

GLA FLOOR 1: 0 sq. ft., excluded 2158 sq. ft.
GLA FLOOR 2: 1712 sq. ft., excluded 708 sq. ft.
GLA FLOOR 3: 482 sq. ft., excluded 217 sq. ft.
Total GLA 2194 sq. ft., total scanned area 5277 sq. ft.

SIZES AND DIMENSIONS ARE APPROXIMATE, ACTUAL MAY VARY.



Disclaimer: Sizes and Dimensions are Approximate, Actual May Vary.



Erin Handlin

719-651-9683

erin.handlin.realtor@gmail.com

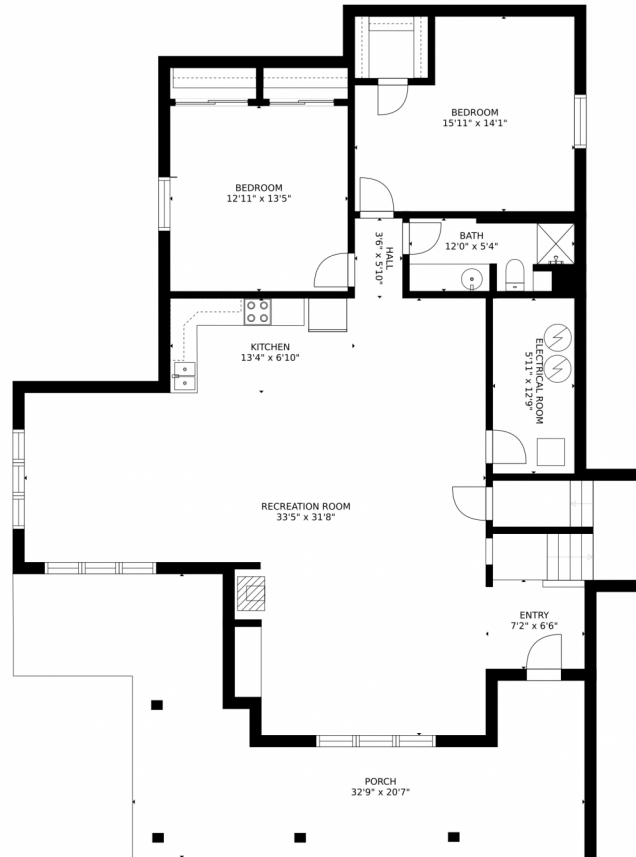
<https://erinhandlin.fathomrealty.com>



Scan code
for more
property
details



34445 Harrisville Road, Calhan, CO 80808 – Lower Level



Estimated areas

GLA FLOOR 1: 0 sq. ft., excluded 2158 sq. ft.
GLA FLOOR 2: 1712 sq. ft., excluded 708 sq. ft.
GLA FLOOR 3: 482 sq. ft., excluded 217 sq. ft.
Total GLA 2194 sq. ft., total scanned area 5277 sq. ft.

SIZES AND DIMENSIONS ARE APPROXIMATE, ACTUAL MAY VARY.



Disclaimer: Sizes and Dimensions are Approximate, Actual May Vary.



Erin Handlin

719-651-9683

erin.handlin.realtor@gmail.com

<https://erinhandlin.fathomrealty.com>



Scan code
for more
property
details



34445 Harrisville Road, Calhan, CO 80808 – All Levels



Estimated areas

GLA FLOOR 1: 0 sq. ft., excluded 2158 sq. ft.
GLA FLOOR 2: 1712 sq. ft., excluded 708 sq. ft.
GLA FLOOR 3: 482 sq. ft., excluded 217 sq. ft.
Total GLA 2194 sq. ft., total scanned area 5277 sq. ft.

SIZES AND DIMENSIONS ARE APPROXIMATE, ACTUAL MAY VARY.



Disclaimer: Sizes and Dimensions are Approximate, Actual May Vary.



Erin Handlin
719-651-9683
erin.handlin.realtor@gmail.com
<https://erinhandlin.fathomrealty.com>



Scan code
for more
property
details

