



6754 S Winnipeg Circle
Aurora, CO 80016
COMMUNITY: Saddle Rock East

MLS # 3929515
PRICE \$450,000



 Condominium  1643 SQFT  3 Beds  2 Baths  2 Car

PROPERTY DETAILS

Welcome home to Prairie Ridge at Saddle Rock East! This home is move in ready to the max as many honey-do's have already been honey done including brand new appliances, interior paint, and new carpet in the mudroom on the main level; along with new windows just over a year old and newer granite countertops in the bathrooms making this home sparkle. You will love the fantastic design of this townhouse starting with the mud room and laundry on the main level just off of the garage entry. Venture next upstairs to an open concept main living area flawlessly connecting the living room to the dining and kitchen with a phenomenal Westward facing balcony accessed from the dining space. The owner's suite is quietly nestled at the East corner of the upper level separated from the main living space and additional bedrooms boasting your own personal slice of serenity complete with a private full bathroom and walk-in closet along with your own private balcony. Two generously sized additional bedrooms and a full bath complete the upper level of the home. Make a splash this Summer and meet your new neighbors at the community private pool and pocket park with a playground. Residents of Prairie Ridge at Saddle Rock East have the advantage of the award winning Cherry Creek School District including Grandview HS and Creekside Elementary. Miles and miles of trails are just at the end of the Prairie Ridge community connecting you to the Piney Creek Trail with the



Tatyana Sturm
720-350-5909
tatyana@exitrealtydtc.com
<https://thestorckteam.com>



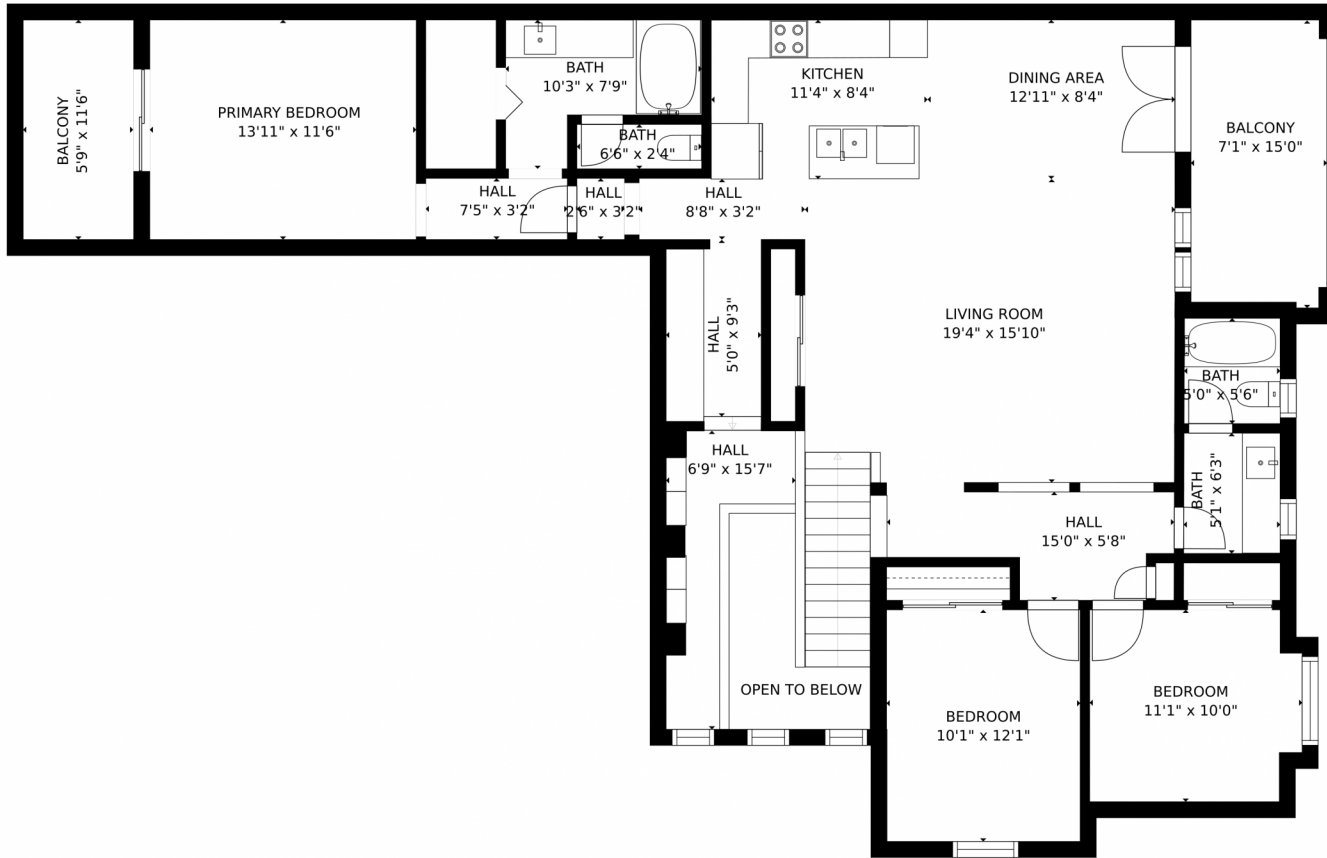
Saddle Rock Golf Course practically in your backyard. Enjoy endless dining, shopping, and entertainment options in the Southlands Outdoor Retail District featuring a full AMC Dine-In Movie Theater, abundant casual dining options along with higher end restaurant options as well, and so many shopping choices. The Southlands Mall also features a robust courtyard area with a mini splash park in the Summer and a skating rink in the Winter.



Tatyana Sturm
720-350-5909
tatyana@exitrealtydtc.com
<https://thestorckteam.com>



6754 S Winnipeg Circle, Aurora, CO 80016 – Main Level



Estimated areas

GLA FLOOR 1: 0 sq. ft, excluded 736 sq. ft
GLA FLOOR 2: 1639 sq. ft, excluded 223 sq. ft
Total GLA 1639 sq. ft, total scanned area 2598 sq. ft

SIZES AND DIMENSIONS ARE APPROXIMATE, ACTUAL MAY VARY.



Disclaimer: Sizes and Dimensions are Approximate, Actual May Vary.



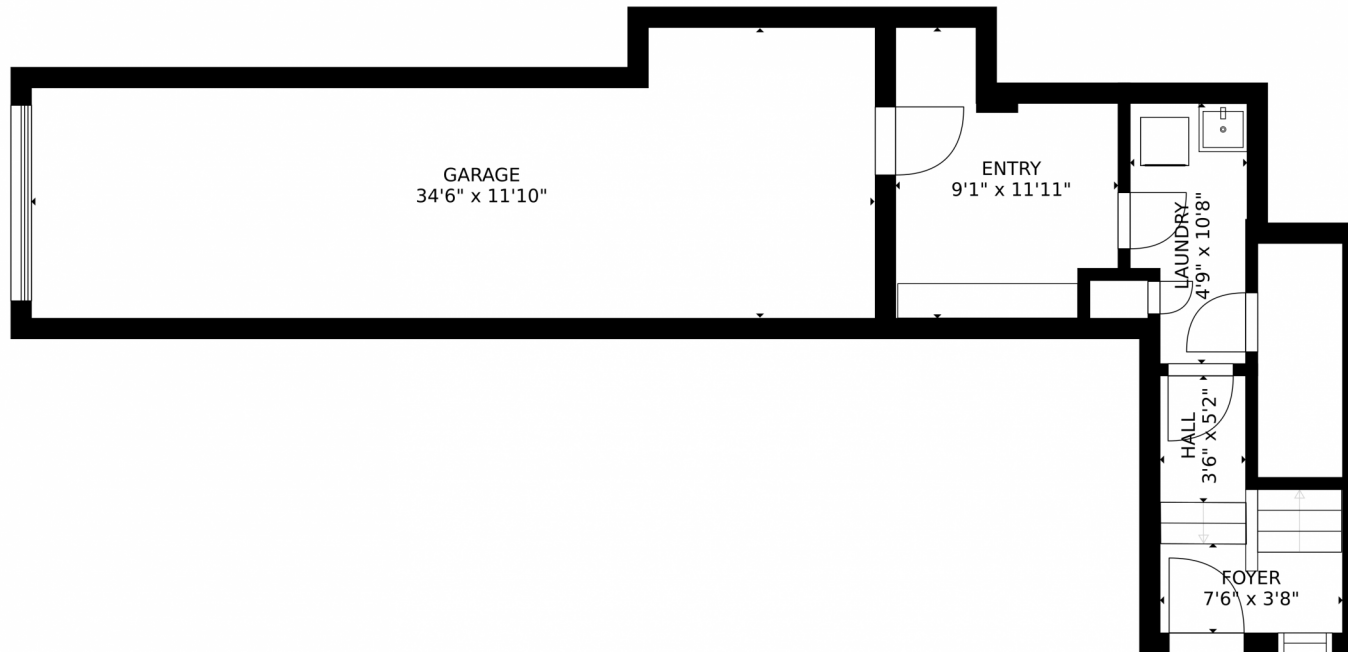
Tatyana Sturm
720-350-5909
tatyana@exitrealtydtc.com
<https://thestorckteam.com>



Scan code
for more
property
details



6754 S Winnipeg Circle, Aurora, CO 80016 – Lower Level



Estimated areas
GLA FLOOR 1: 0 sq. ft, excluded 736 sq. ft
GLA FLOOR 2: 1639 sq. ft, excluded 223 sq. ft
Total GLA 1639 sq. ft, total scanned area 2598 sq. ft
SIZES AND DIMENSIONS ARE APPROXIMATE, ACTUAL MAY VARY.



Disclaimer: Sizes and Dimensions are Approximate, Actual May Vary.

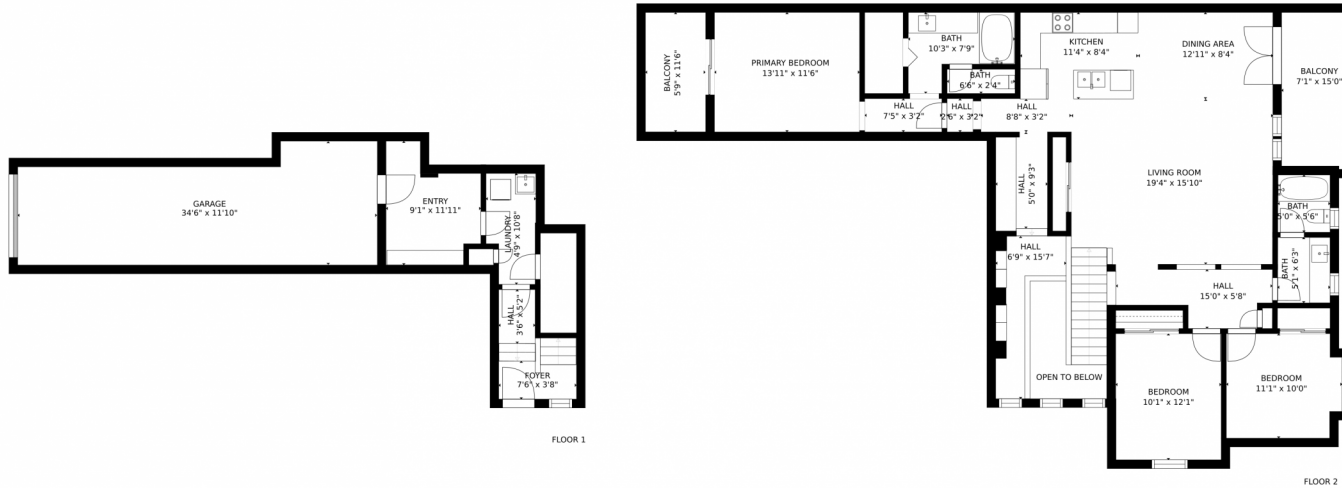


Tatyana Sturm
720-350-5909
tatyana@exitrealtydtc.com
<https://thestorckteam.com>



Scan code
for more
property
details

6754 S Winnipeg Circle, Aurora, CO 80016 – All Levels



Estimated areas

GLA FLOOR 1: 0 sq. ft, excluded 736 sq. ft
GLA FLOOR 2: 1639 sq. ft, excluded 223 sq. ft
Total GLA 1639 sq. ft, total scanned area 2598 sq. ft

SIZES AND DIMENSIONS ARE APPROXIMATE, ACTUAL MAY VARY.



Disclaimer: Sizes and Dimensions are Approximate, Actual May Vary.



Tatyana Sturm
720-350-5909
tatyana@exitrealtydtc.com
<https://thestorckteam.com>



Scan code
for more
property
details

