



20682 E Euclid Drive  
Centennial, CO 80016  
COMMUNITY: Greenfield

MLS # 8315653  
PRICE \$850,000



Single Family



4682 SQFT



4 Beds



4 Baths



3 Car



0.25 Acre

## PROPERTY DETAILS

Welcome Home to the Greenfield community of desirable Southeast Aurora! This lovely two-story abode is truly one of a kind showcasing \$275,000 worth of owner updates including the HVAC system, roof with impact resistant shingles, wood look tiling flooring throughout the above grade levels of the home, full kitchen and bathroom remodels, wrought iron balusters, full interior and exterior paint, a fully remastered basement which has been converted into a true mother-in-law suite, and even a heated garage. This home was meticulously designed for the entertainer's heart featuring an open main living area quietly nestled at the back of the main level leading into the sunroom and outdoor living space. Upstairs the owner's suite is your tranquil oasis with two additional bedrooms, a secondary full bathroom, and loft lounge and study area. The finished basement is complete with a massive great room offering endless potential and then the second section is a true mother-in-law suite adorned with a bedroom, bathroom, and tiled flex space with a wet bar and full sized washer and dryer. Functionality meets elegance in this one of a kind home with the Piney Creek Trail literally in your backyard along with the Rolling Hills Elementary bus stop at your front yard making this one of the best locations in Greenfield. Living in Greenfield is truly a lifestyle of its own, miles of trails connect you throughout this perfectly maintained neighborhood to the duck pond, clubhouse,



**Tatyana Sturm**

720-350-5909

tatyana@exitrealtydtc.com

<https://thestorckteam.com>

Scan code  
for more  
property  
details



and beyond to the Piney Creek Trail and Cherry Creek Pathways. Make a splash and meet your neighbors this Summer at the community swimming pool and tennis courts or at one of the many community events hosted at Greenfield for all major holidays including back to school, an Easter Egg Hunt, and so much more. Three community parks include acres of open space, a basketball court, and a playground. Residents of Greenfield have access to the award-winning Cherry Creek Schools along with Grandview High School.



**Tatyana Sturm**

720-350-5909

tatyana@exitrealtydtc.com

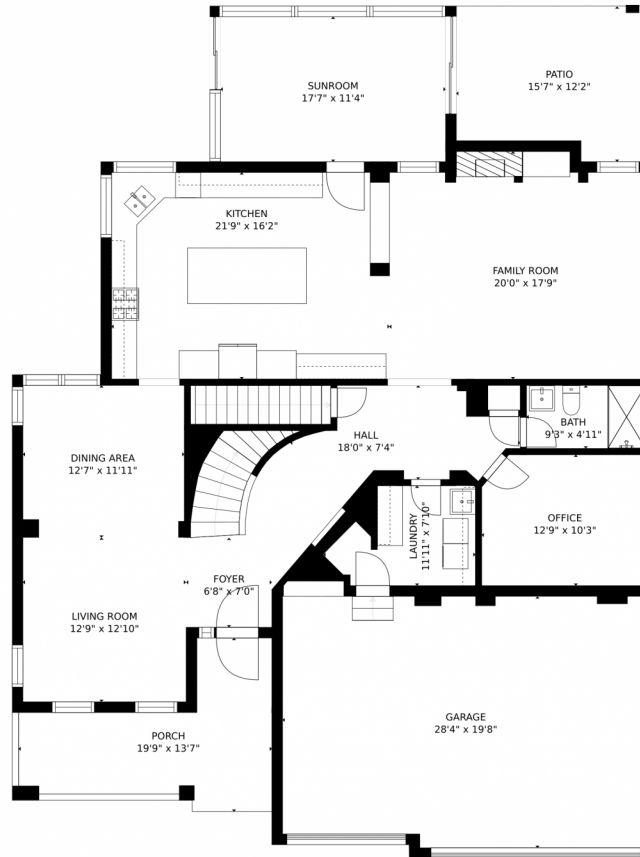
<https://thestorckteam.com>



Scan code  
for more  
property  
details



# 20682 E Euclid Drive, Centennial, CO 80016 – Main Level



### Estimated areas

GLA FLOOR 1: 0 sq. ft, excluded 1641 sq. ft.  
GLA FLOOR 2: 1983 sq. ft, excluded 952 sq. ft.  
GLA FLOOR 3: 1372 sq. ft, excluded 661 sq. ft.  
Total GLA 3355 sq. ft, total scanned area 6609 sq. ft.

SIZES AND DIMENSIONS ARE APPROXIMATE, ACTUAL MAY VARY.



Disclaimer: Sizes and Dimensions are Approximate, Actual May Vary.



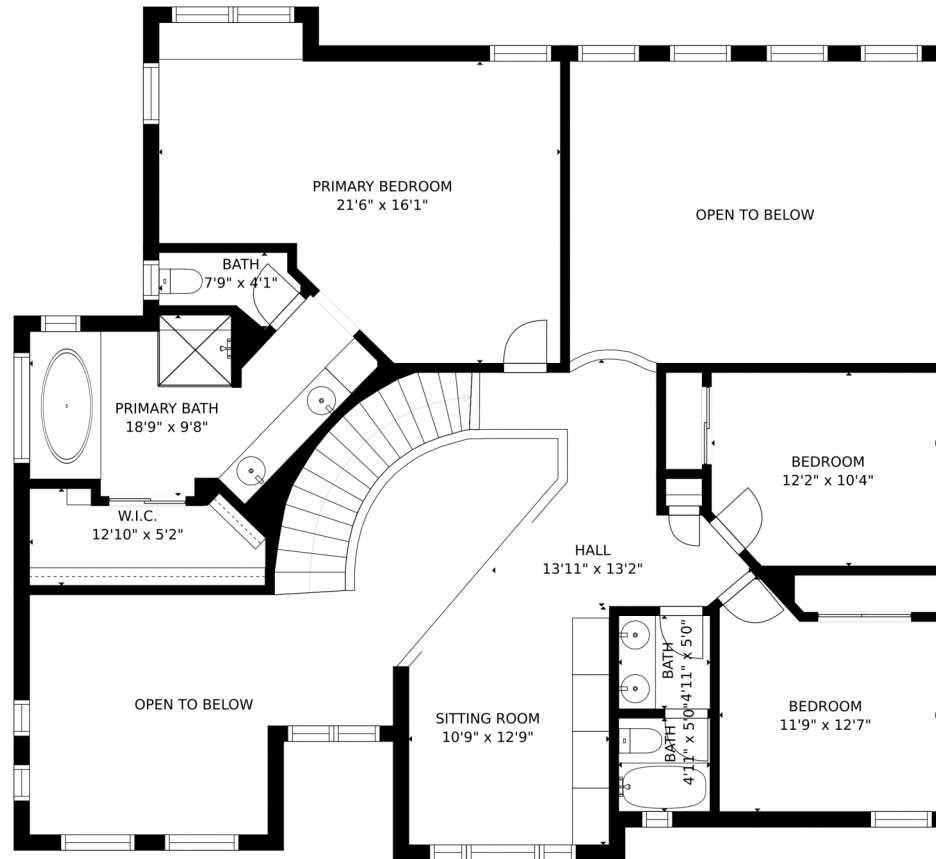
**Tatyana Sturm**  
720-350-5909  
tatyana@exitrealttydc.com  
<https://thestorckteam.com>



Scan code  
for more  
property  
details



# 20682 E Euclid Drive, Centennial, CO 80016 – Upper Level



### Estimated areas

GLA FLOOR 1: 0 sq. ft. excluded 1641 sq. ft.  
GLA FLOOR 2: 1983 sq. ft. excluded 952 sq. ft.  
GLA FLOOR 3: 1372 sq. ft. excluded 661 sq. ft.  
Total GLA 3355 sq. ft. total scanned area 6609 sq. ft.

SIZES AND DIMENSIONS ARE APPROXIMATE, ACTUAL MAY VARY.



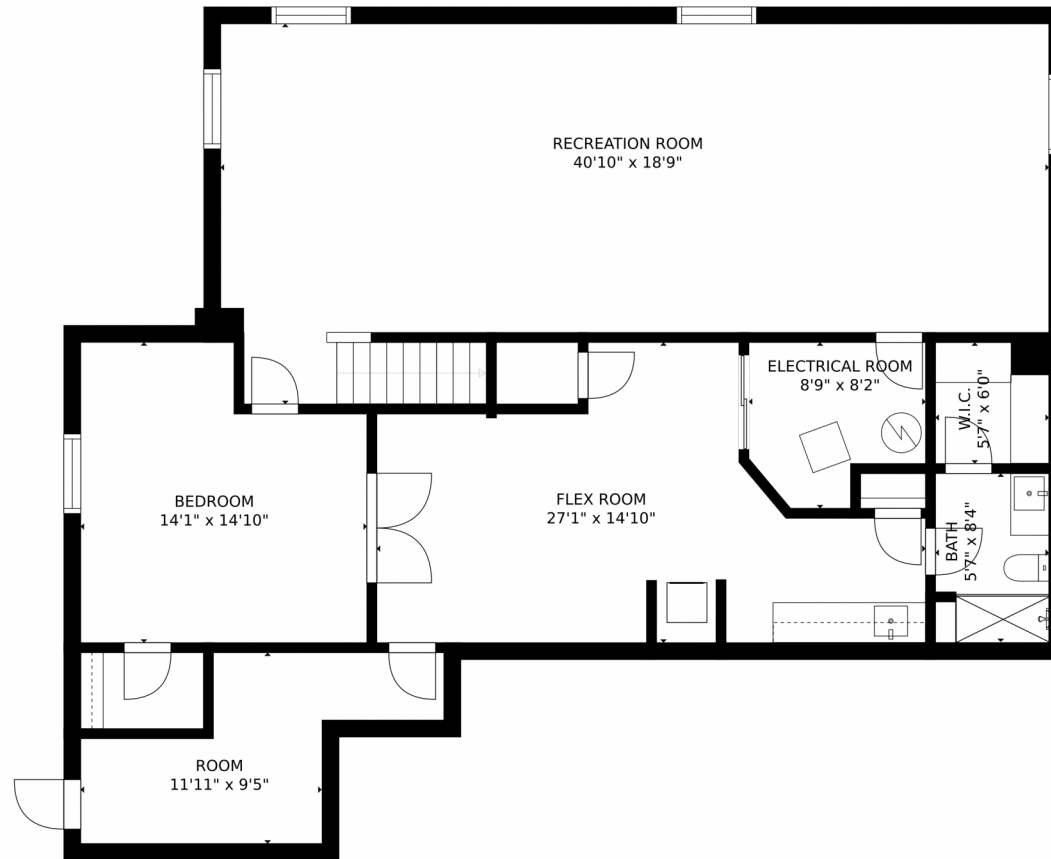
Disclaimer: Sizes and Dimensions are Approximate, Actual May Vary.



**Tatyana Sturm**  
720-350-5909  
tatyana@exitrealtydtc.com  
<https://thestorckteam.com>



# 20682 E Euclid Drive, Centennial, CO 80016 – Lower Level



### Estimated areas

GLA FLOOR 1: 0 sq. ft., excluded 1641 sq. ft.  
GLA FLOOR 2: 1983 sq. ft., excluded 952 sq. ft.  
GLA FLOOR 3: 1372 sq. ft., excluded 661 sq. ft.  
Total GLA 3355 sq. ft., total scanned area 6609 sq. ft.

SIZES AND DIMENSIONS ARE APPROXIMATE, ACTUAL MAY VARY.



Disclaimer: Sizes and Dimensions are Approximate, Actual May Vary.



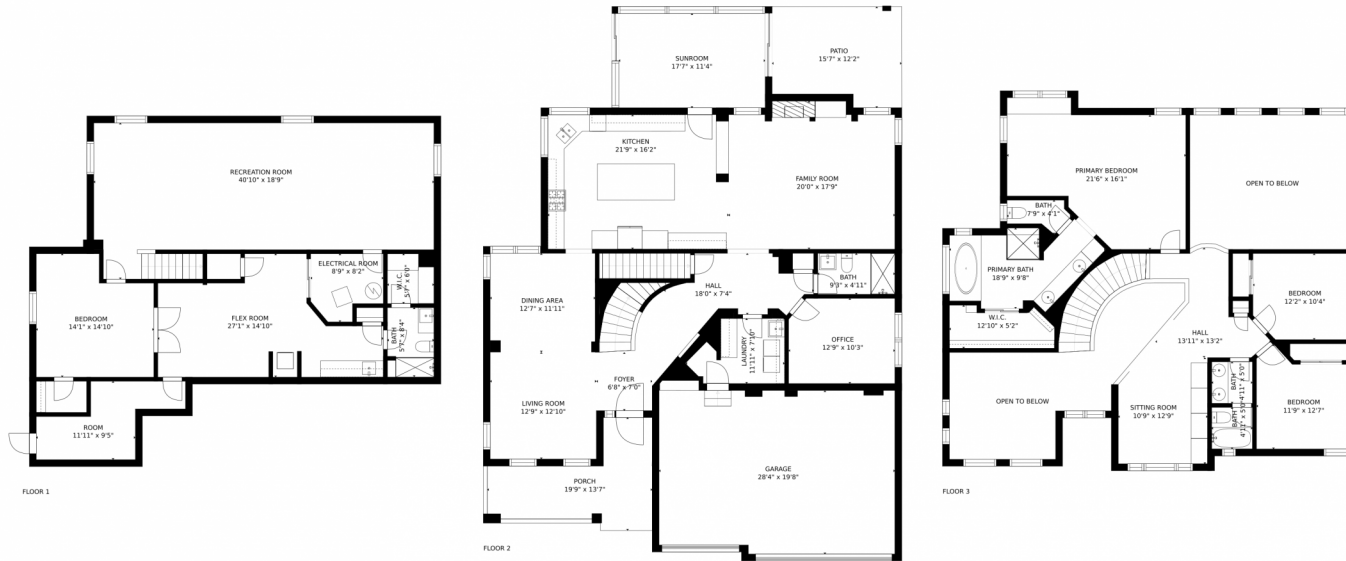
**Tatyana Sturm**  
720-350-5909  
tatyana@exitrealtydtc.com  
<https://thestorckteam.com>



Scan code  
for more  
property  
details



# 20682 E Euclid Drive, Centennial, CO 80016 – All Levels



### Estimated areas

GLA FLOOR 1: 0 sq. ft. excluded 1641 sq. ft.  
GLA FLOOR 2: 1983 sq. ft. excluded 952 sq. ft.  
GLA FLOOR 3: 1372 sq. ft. excluded 661 sq. ft.  
Total GLA 3355 sq. ft. total scanned area 6609 sq. ft.

SIZES AND DIMENSIONS ARE APPROXIMATE, ACTUAL MAY VARY.



Disclaimer: Sizes and Dimensions are Approximate, Actual May Vary.



**Tatyana Sturm**  
720-350-5909  
tatyana@exitrealtydtc.com  
<https://thestorckteam.com>



Scan code  
for more  
property  
details

