

4804 S Pine Road
Evergreen, CO 80439

COMMUNITY: Mary N Williams Estate

MLS # 1529460

PRICE \$720,000



Single Family



2323 SQFT



4 Beds



3 Baths



0.34 Acre

PROPERTY DETAILS

Built in 1914, this unique historic property is a "must see", "must have"! There are many options available on how to maximize this property. Whether you are looking for a single-family residence, investment property, or a multi-generational home, come take a look! Most recently utilized as an investment property, it was zoned as an up/down duplex in 1973 by Jefferson County.

It is also considered a single-family residence. Whatever your current needs are, you have options! The main level of this home features a light and bright open floor plan with vaulted ceilings, 2 bedrooms and a full bathroom. With 2 bedrooms, 2 bathrooms and open concept living room and kitchen area downstairs, you can use your imagination on how you want to use this space. An interior lock off stairway separates the two levels of the home in the event you choose to rent the lower level. Be sure to check out the utility room on the lower level where you will find separate hot water heaters and furnaces for each level along with a full washer and dry and utility sink.

Nestled on the hillside above Evergreen Lake, you can experience the year-round outdoor activities and entertainment it offers. Minutes from historic downtown Evergreen, shopping, restaurants and entertainment, you don't want to miss this property!



Brenda Davis

303-829-3099

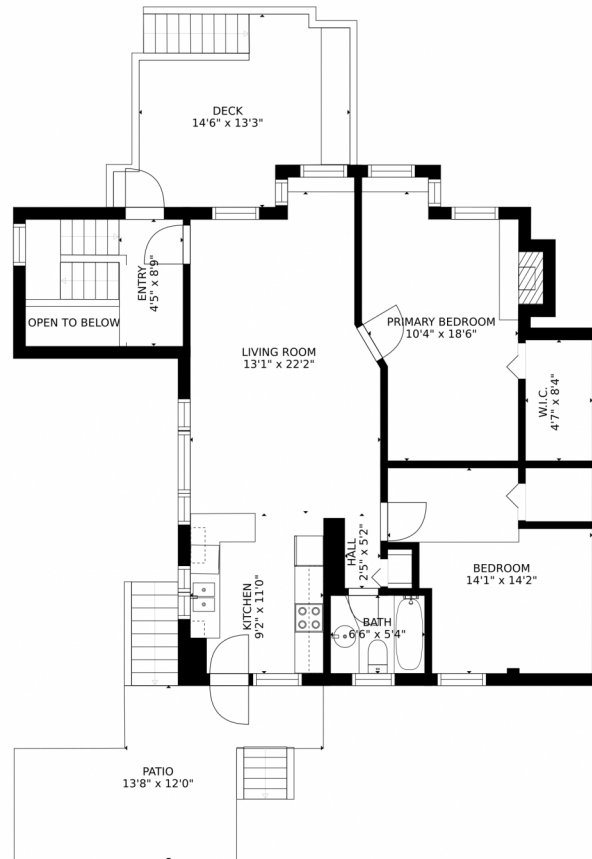
brenda@brendadavishomes.com

<https://brendadavis.bhhscore.com/>

Scan code
for more
property
details



4804 S Pine Road, Evergreen, CO 80439 – Main Level



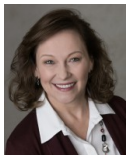
Estimated areas

GLA FLOOR 1: 0 sq. ft, excluded 1410 sq. ft
GLA FLOOR 2: 1046 sq. ft, excluded 372 sq. ft
Total GLA 1046 sq. ft, total scanned area 2828 sq. ft

SIZES AND DIMENSIONS ARE APPROXIMATE, ACTUAL MAY VARY.



Disclaimer: Sizes and Dimensions are Approximate, Actual May Vary.



Brenda Davis

303-829-3099

brenda@brendadavishomes.com

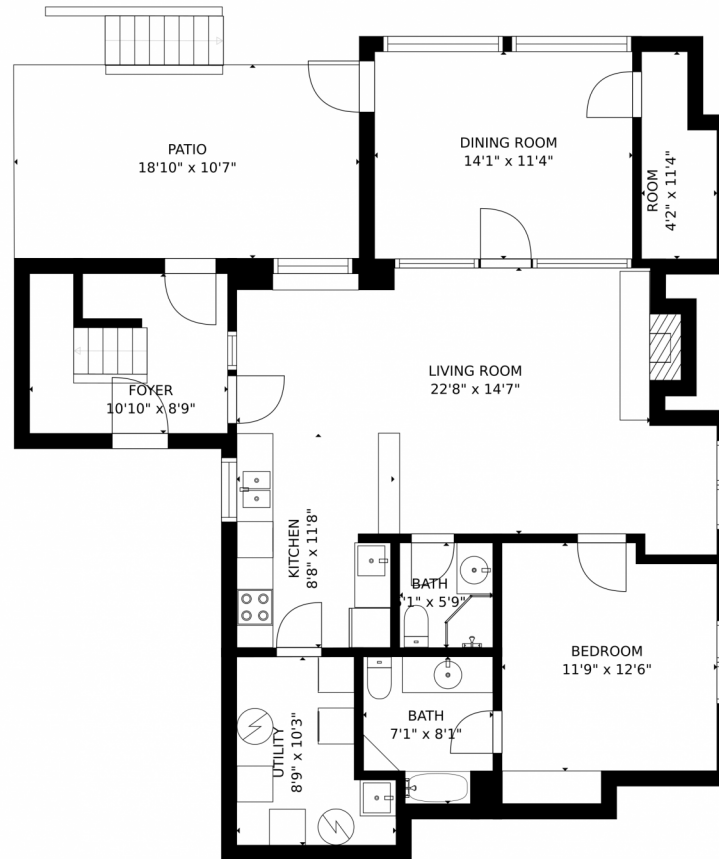
<https://brendadavis.bhhscore.com/>



Scan code
for more
property
details



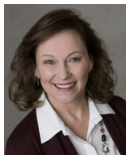
4804 S Pine Road, Evergreen, CO 80439 – Lower Level



Estimated areas
GLA FLOOR 1: 0 sq. ft, excluded 1410 sq. ft
GLA FLOOR 2: 1046 sq. ft, excluded 372 sq. ft
Total GLA 1046 sq. ft, total scanned area 2828 sq. ft
SIZES AND DIMENSIONS ARE APPROXIMATE, ACTUAL MAY VARY.



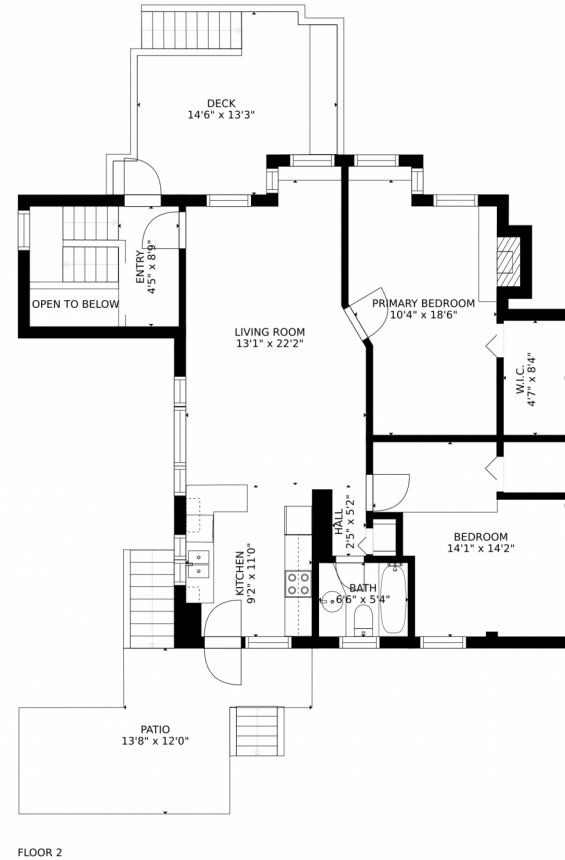
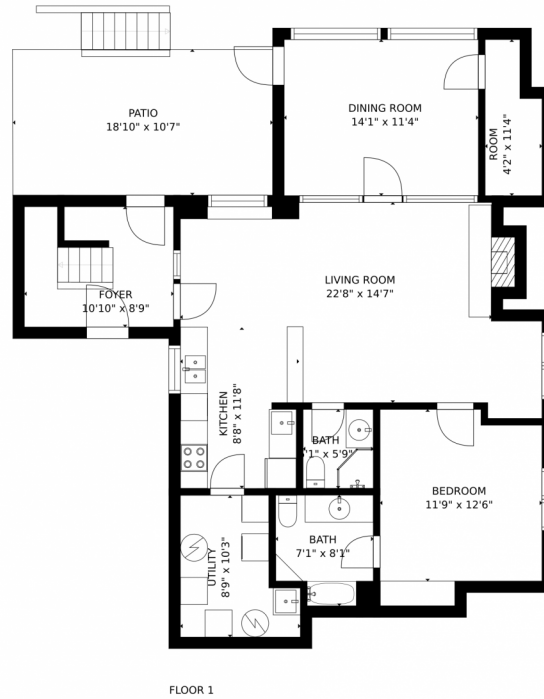
Disclaimer: Sizes and Dimensions are Approximate, Actual May Vary.



Brenda Davis
303-829-3099
brenda@brendadavishomes.com
<https://brendadavis.bhhscore.com/>



4804 S Pine Road, Evergreen, CO 80439 – All Levels



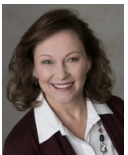
Estimated areas

GLA FLOOR 1: 0 sq. ft, excluded 1410 sq. ft
GLA FLOOR 2: 1046 sq. ft, excluded 372 sq. ft
Total GLA 1046 sq. ft, total scanned area 2828 sq. ft

SIZES AND DIMENSIONS ARE APPROXIMATE, ACTUAL MAY VARY.



Disclaimer: Sizes and Dimensions are Approximate, Actual May Vary.



Brenda Davis

303-829-3099

brenda@brendadavishomes.com

<https://brendadavis.bhhscore.com/>



Scan code
for more
property
details

