



3411 N Lafayette Street
 Denver, CO 80205
 COMMUNITY: Cole

MLS # 3735359
 PRICE \$525,000



Single Family



1062 SQFT



2 Beds



1 Baths



0.05 Acre

PROPERTY DETAILS

Welcome home to tons of character and elegant 19th Century charm in the highly sought after cottage of the Cole neighborhood in the heart of Denver. Many true to the era details have been lovingly remastered in the home from the decorative trim around many of the doors and windows to the stunning original hardwoods that carry you throughout most of the home along with the gorgeous hardwoods that carry you through most of the home. So many honey does have already been honey done from a full kitchen remodel to brand new interior and exterior paint and of course the landscaping has been recently refreshed as well with a full Xeriscaped design to save you time and money on maintenance, literally everything was thought of when remodeling this fantastic Denver cottage. The layout really capitalizes on all 886 finished square feet of the main level boasting large rooms including the kitchen offering plenty of elbow room to throw down even the largest dinner party to sizable bedrooms and a recently remastered bathroom, but quite possibly our favorite part of this home is the large flex space that is currently serving as a dining suite but would also make for a fantastic home office and so much more. You will love living in the Cole/Whittier community with a multitude of Denver City Parks within minutes of your home along with the St Charles Recreation Center just 3 blocks away, walk to the RiNo Art District in just 10 minutes where you can enjoy so



Tatyana Sturm
 720-350-5909
 tatyana@exitrealtydtc.com
 https://thestorckteam.com



Scan code
 for more
 property
 details



many local eateries and breweries like the Blue Sparrow coffee house or Stowaway Kitchen and the Barcelona Wine Bar or Larimer Lounge; living in this fantastic location offers a variety of entertainment so you will never have to wonder what you're doing tonight ever again! Arrive into Downtown Denver in minutes as well with a straight shot South on Downing practically in your backyard along with the Denver Botanic Gardens and Denver Zoo a very easy drive just South of your new home.



Tatyana Sturm

720-350-5909

tatyana@exitrealtydtc.com

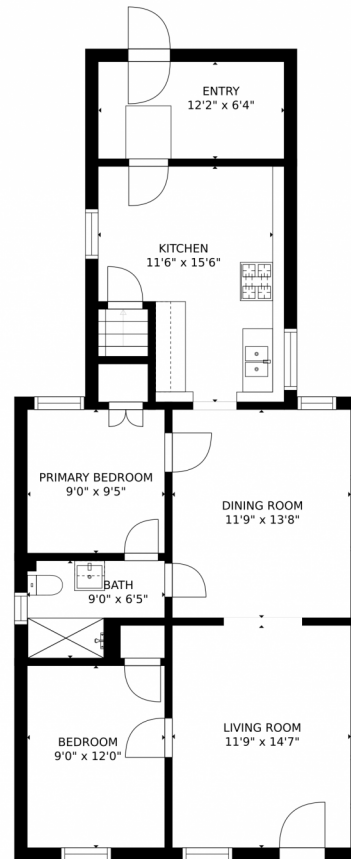
<https://thestorckteam.com>



Scan code
for more
property
details



3411 N Lafayette Street, Denver, CO 80205 – First Floor



Estimated areas

GLA FLOOR 1: 0 sq. ft, excluded 291 sq. ft
GLA FLOOR 2: 1016 sq. ft, excluded 0 sq. ft
Total GLA 1016 sq. ft, total scanned area 1307 sq. ft

SIZES AND DIMENSIONS ARE APPROXIMATE, ACTUAL MAY VARY.



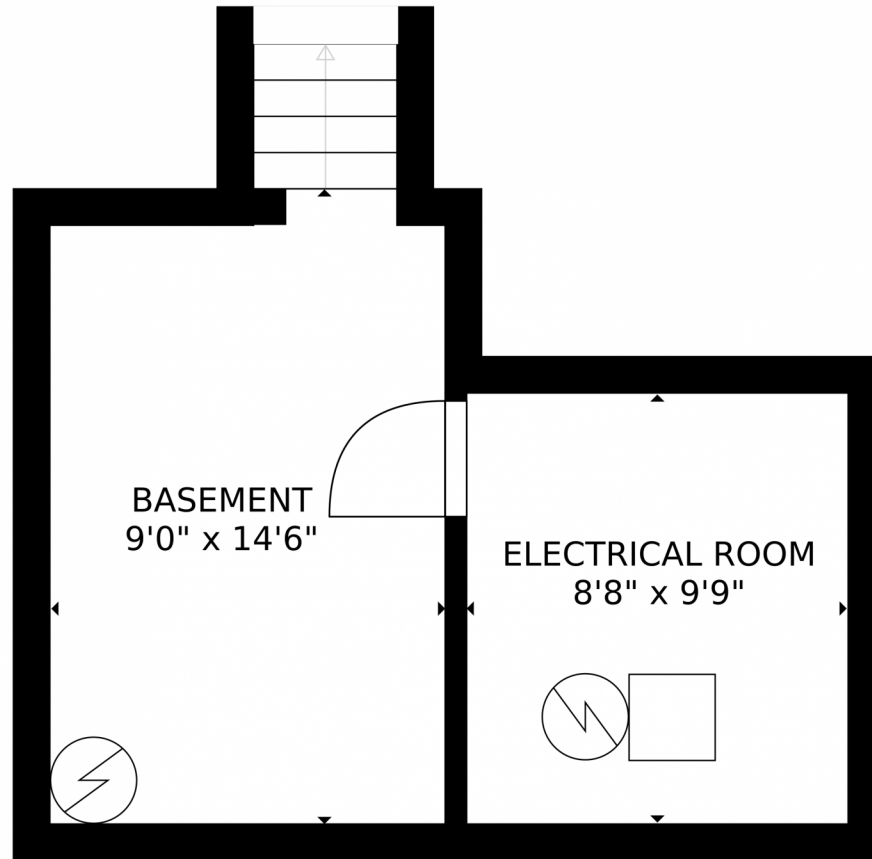
Disclaimer: Sizes and Dimensions are Approximate, Actual May Vary.



Tatyana Sturm
720-350-5909
tatyana@exitrealtydtc.com
<https://thestorckteam.com>



Scan code
for more
property
details



Estimated areas
GLA FLOOR 1: 0 sq. ft, excluded 291 sq. ft
GLA FLOOR 2: 1016 sq. ft, excluded 0 sq. ft
Total GLA 1016 sq. ft, total scanned area 1307 sq. ft
SIZES AND DIMENSIONS ARE APPROXIMATE, ACTUAL MAY VARY.



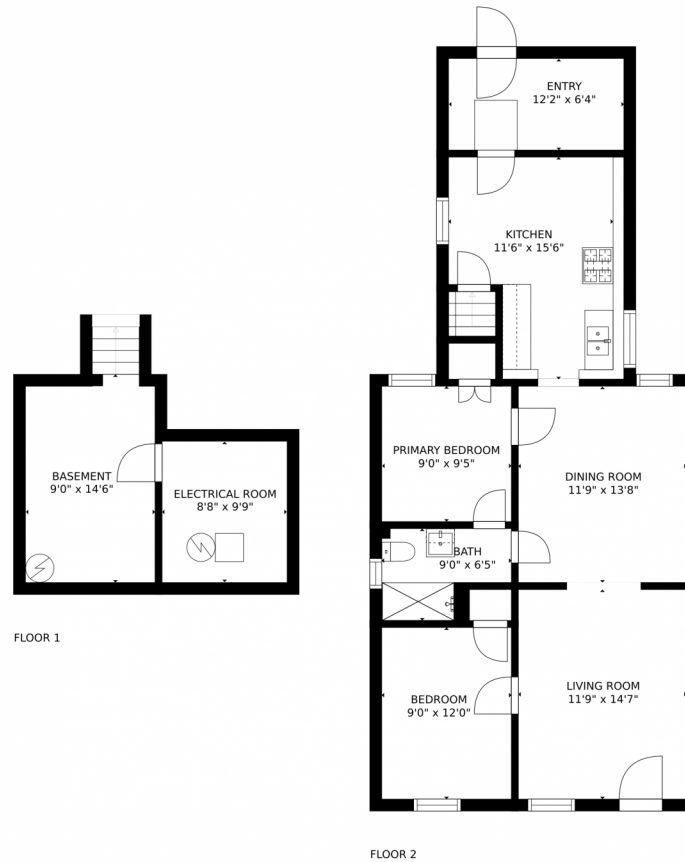
Disclaimer: Sizes and Dimensions are Approximate, Actual May Vary.



Tatyana Sturm
720-350-5909
tatyana@exitrealtydtc.com
<https://thestorckteam.com>



3411 N Lafayette Street, Denver, CO 80205 – All Floors



Estimated areas

GLA FLOOR 1: 0 sq. ft, excluded 291 sq. ft
GLA FLOOR 2: 1016 sq. ft, excluded 0 sq. ft
Total GLA 1016 sq. ft, total scanned area 1307 sq. ft

SIZES AND DIMENSIONS ARE APPROXIMATE, ACTUAL MAY VARY.



Disclaimer: Sizes and Dimensions are Approximate, Actual May Vary.



Tatyana Sturm
720-350-5909
tatyana@exitrealtydtc.com
<https://thestorckteam.com>



Scan code
for more
property
details