



11343 West 60th Place
Arvada, CO 80004

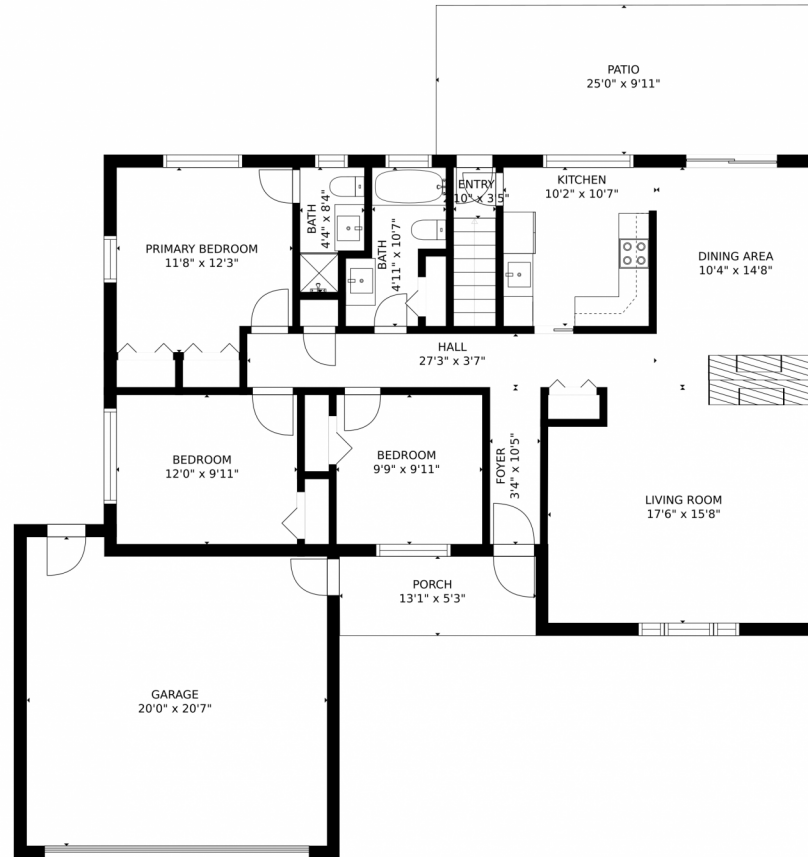
MLS # 1579363



 Single Family  2700 SQFT

Marylee Hause
303-748-7720
maryleeiphone@yahoo.com





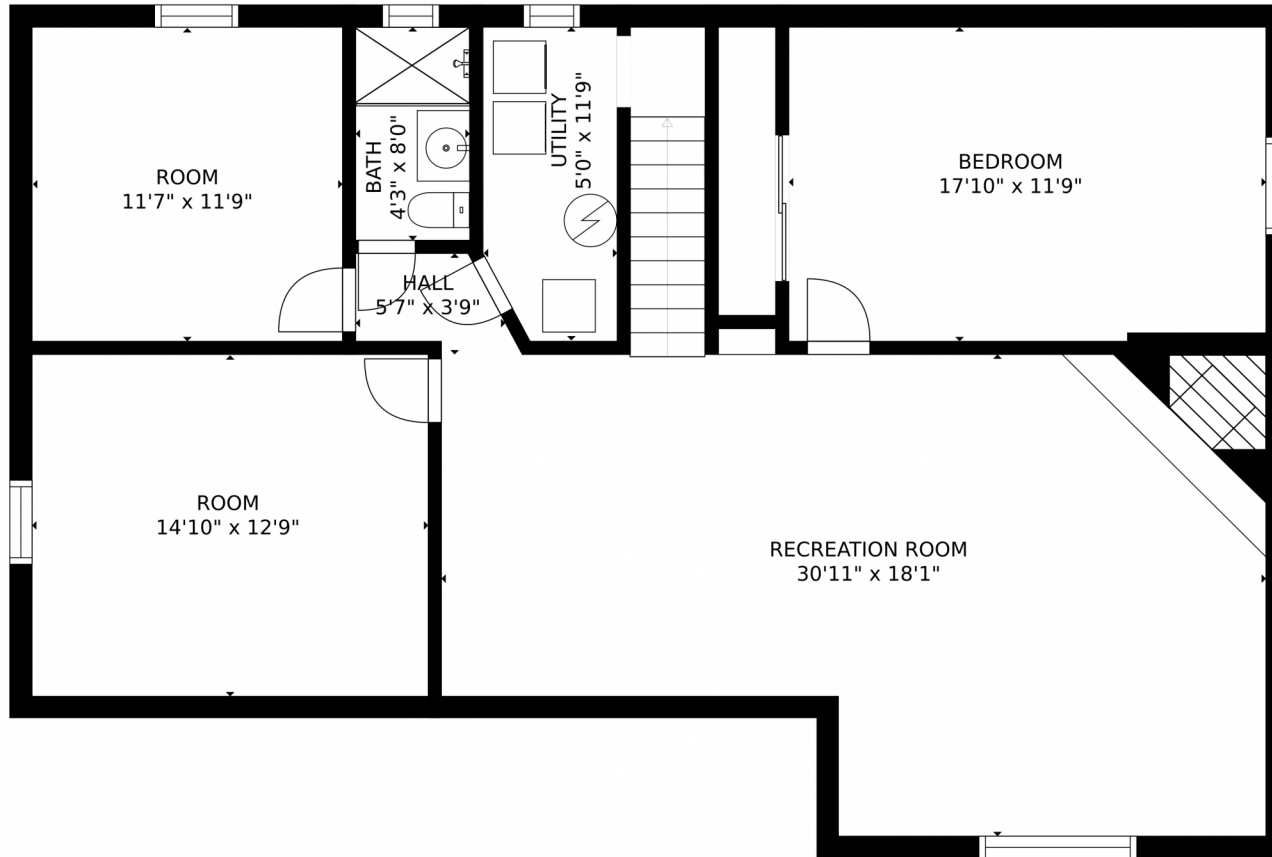
GROSS INTERNAL AREA
FLOOR 1: 1243 sq. ft, FLOOR 2: 1251 sq. ft
EXCLUDED AREAS: , GARAGE: 392 sq. ft
PATIO: 249 sq. ft, PORCH: 69 sq. ft
TOTAL: 2493 sq. ft
SIZES AND DIMENSIONS ARE APPROXIMATE, ACTUAL MAY VARY.



Disclaimer: Sizes and Dimensions are Approximate, Actual May Vary.



11343 West 60th Place, Arvada, CO 80004 – Basement



GROSS INTERNAL AREA
FLOOR 1: 1243 sq. ft, FLOOR 2: 1251 sq. ft
EXCLUDED AREAS: , GARAGE: 392 sq. ft
PATIO: 249 sq. ft, PORCH: 69 sq. ft
TOTAL: 2493 sq. ft
SIZES AND DIMENSIONS ARE APPROXIMATE, ACTUAL MAY VARY.



Disclaimer: Sizes and Dimensions are Approximate, Actual May Vary.

Marylee Hause
303-748-7720
maryleeiphone@yahoo.com



11343 West 60th Place, Arvada, CO 80004 – All Levels



GROSS INTERNAL AREA
FLOOR 1: 1243 sq. ft, FLOOR 2: 1251 sq. ft
EXCLUDED AREAS: , GARAGE: 392 sq. ft
PATIO: 249 sq. ft, PORCH: 69 sq. ft
TOTAL: 2493 sq. ft
SIZES AND DIMENSIONS ARE APPROXIMATE, ACTUAL MAY VARY.



Disclaimer: Sizes and Dimensions are Approximate, Actual May Vary.

Marylee Hause
303-748-7720
maryleeiphone@yahoo.com

