



564 West Shepperd Avenue  
Littleton, CO 80120  
**COMMUNITY:** Broadmoor



Single Family



1986 SQFT



3 Beds



1/1 Baths



3 Car



0.18 Acre



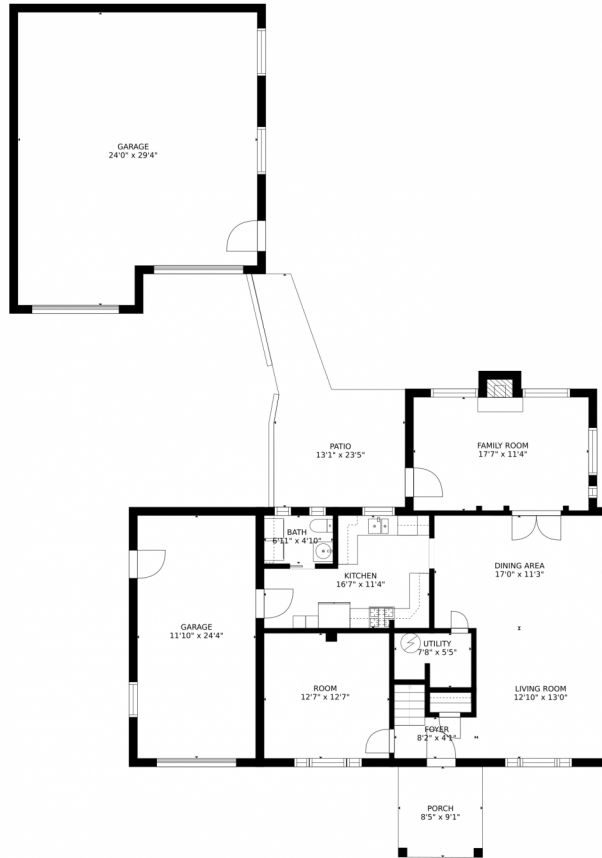
**Trisha Karstetter & Elliot Pappas**  
720-934-4477  
trisha@spiritbearrealty.com  
<http://www.SpiritBearRealty.com>



Scan code  
for more  
property  
details



# 564 West Shepperd Avenue, Littleton, CO 80120 – Main Level



### Estimated areas

GLA FLOOR 1: 1154 sq. ft, excluded 1372 sq. ft  
GLA FLOOR 2: 747 sq. ft, excluded 44 sq. ft  
Total GLA 1901 sq. ft, total scanned area 3317 sq. ft

SIZES AND DIMENSIONS ARE APPROXIMATE, ACTUAL MAY VARY.



Disclaimer: Sizes and Dimensions are Approximate, Actual May Vary.



**Trisha Karstetter & Elliot Pappas**

720-934-4477

[trisha@spiritbearrealty.com](mailto:trisha@spiritbearrealty.com)

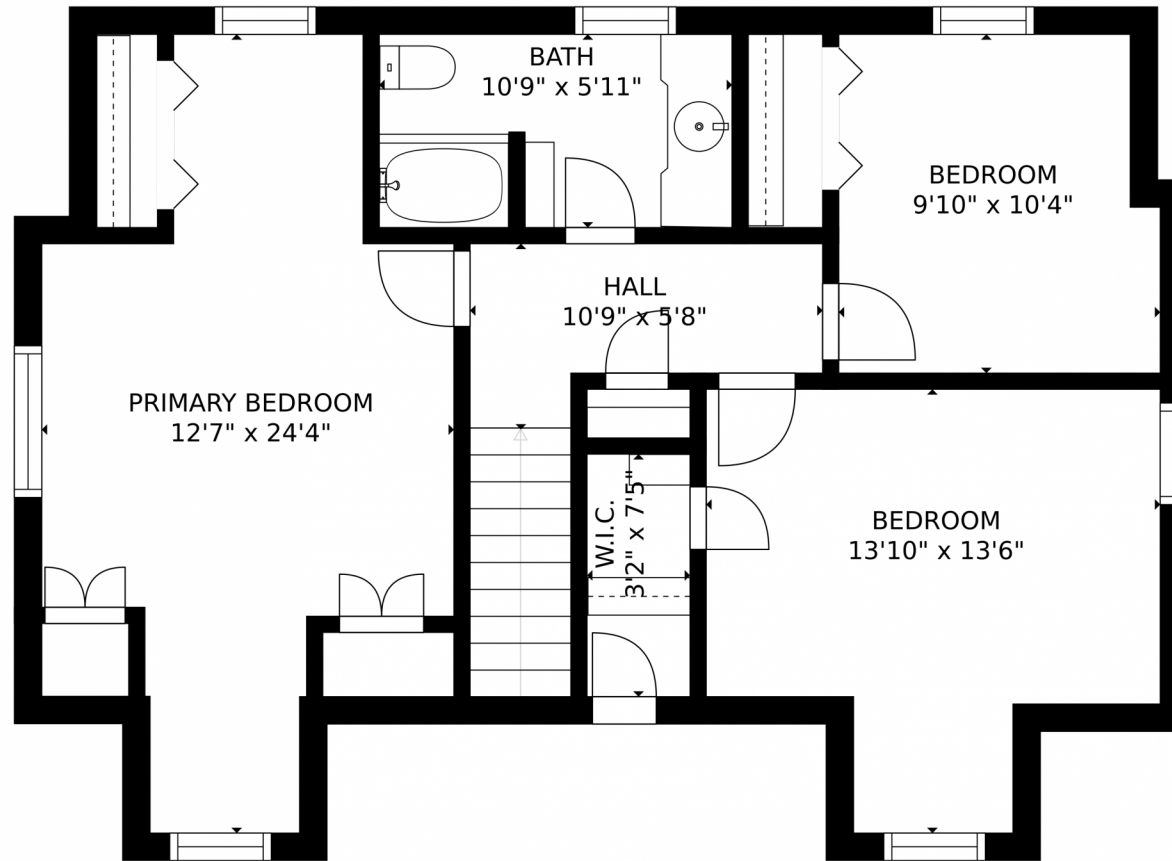
<http://www.SpiritBearRealty.com>



Scan code  
for more  
property  
details



564 West Shepperd Avenue, Littleton, CO 80120 – Upper Level



Estimated areas  
GLA FLOOR 1: 1154 sq. ft, excluded 1372 sq. ft  
GLA FLOOR 2: 747 sq. ft, excluded 44 sq. ft  
Total GLA 1901 sq. ft, total scanned area 3317 sq. ft  
SIZES AND DIMENSIONS ARE APPROXIMATE, ACTUAL MAY VARY.



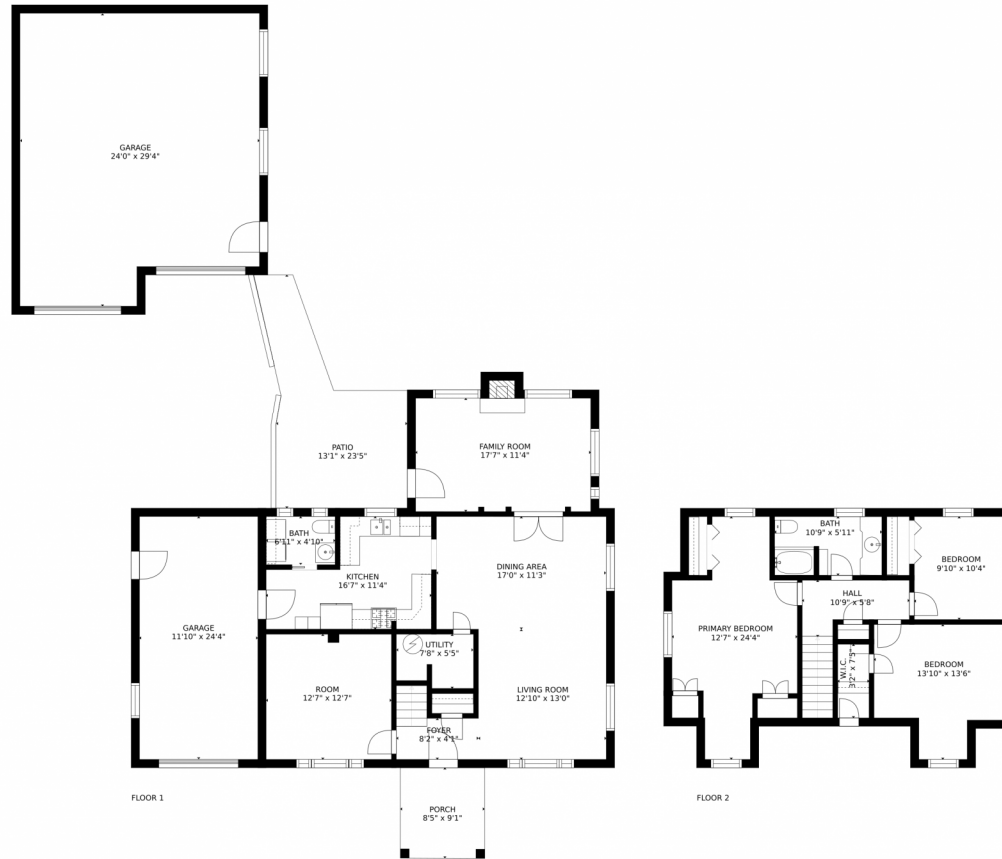
Disclaimer: Sizes and Dimensions are Approximate, Actual May Vary.



**Trisha Karstetter & Elliot Pappas**  
720-934-4477  
trisha@spiritbearrealty.com  
<http://www.SpiritBearRealty.com>



# 564 West Shepperd Avenue, Littleton, CO 80120 – All Levels



### Estimated areas

GLA FLOOR 1: 1154 sq. ft, excluded 1372 sq. ft  
GLA FLOOR 2: 747 sq. ft, excluded 44 sq. ft  
Total GLA 1901 sq. ft, total scanned area 3317 sq. ft

SIZES AND DIMENSIONS ARE APPROXIMATE, ACTUAL MAY VARY.



Disclaimer: Sizes and Dimensions are Approximate, Actual May Vary.



**Trisha Karstetter & Elliot Pappas**

720-934-4477

trisha@spiritbearrealty.com

<http://www.SpiritBearRealty.com>



Scan code  
for more  
property  
details

