



Single Family



4615 SQFT



3 Beds



3/1 Baths



2 Car



1.51 Acre

## PROPERTY DETAILS

This is a special one. This outstanding home perched on 1.5 acres has gorgeous snowcapped mountain views, wonderful rock outcroppings and plenty of privacy. The features of this home will delight you. This home was beautifully designed with an artistic flair. You will find art niches, lighted shelving, beautiful stained-glass accents, arched doorways, leaded glass cabinet doors and additional special details throughout. Quality abounds as well, with solid 6-panel doors with high end knobs and hinges, Brazilian cherry flooring and much more. The expansive kitchen is exquisitely designed and features a Subzero refrigerator, Thermador range, plentiful pantry cabinetry and is filled with cheerful morning sun. The living room features a wet bar, fireplace, stained glass and lofted ceiling. Upstairs is the awesome primary suite, with its own loft/office area, private deck, large bathroom and walk in closet, and even a unique reading nook. On the lower level, find a den/media room with walk out to the flagstone patio and hot tub, two bedrooms, bath with a wonderful sauna and the laundry room. In addition, a stunning 750 foot addition was added in 2015!, which features a beautiful bathroom and two additional spacious rooms with vaulted ceilings. One is currently used as an office with wonderful sun and views, and with walk out access to the deck. The expansive south facing deck is wonderful for outdoor living all year long, with Mt. Evan's views and plenty of sunshine. Watch



**Pandora & John Erlandson**  
 303-888-6298  
[pandora@pandorajohnproperties.com](mailto:pandora@pandorajohnproperties.com)  
<https://www.pandorajohnproperties.com>



Scan code  
 for more  
 property  
 details



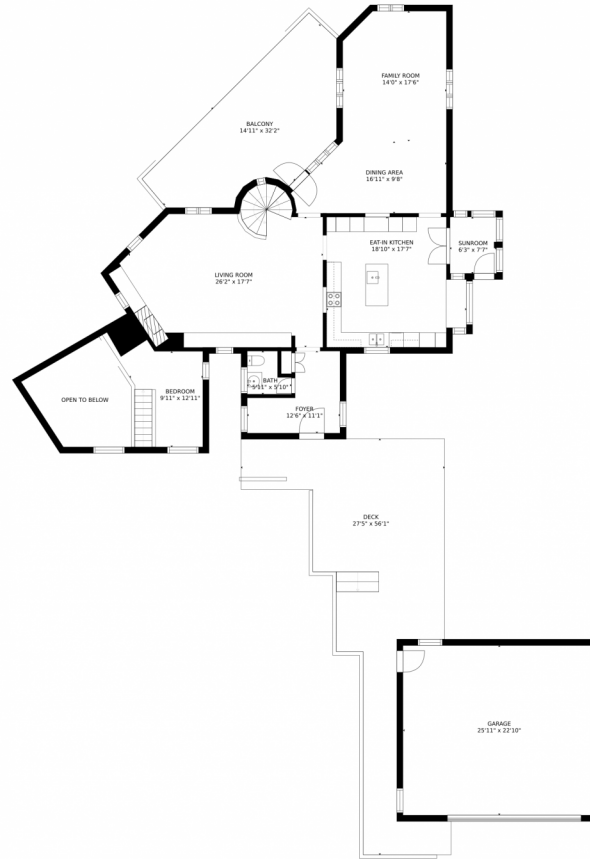
the evening sky from the hot tub! Storage abounds here as well, and the garage is oversized with additional storage space. This home is filled with character and light, and living here is like being in your own special sanctuary. It's ideally located on a quiet cul de sac, but just minutes from all the Evergreen has to offer. Welcome home!



**Pandora & John Erlandson**  
303-888-6298  
pandora@pandorajohnproperties.com  
<https://www.pandorajohnproperties.com>



# 261 Columbine Lane, Evergreen, CO 80439 – Main Level



GROSS INTERNAL AREA  
FLOOR 1: 1875 sq. ft, FLOOR 2: 1568 sq. ft  
FLOOR 3: 812 sq. ft, FLOOR 4: 38 sq. ft  
EXCLUDED AREAS: , DECK: 1031 sq. ft  
PATIO: 1327 sq. ft, GARAGE: 594 sq. ft  
BALCONY: 469 sq. ft  
TOTAL: 4294 sq. ft  
SIZES AND DIMENSIONS ARE APPROXIMATE, ACTUAL MAY VARY.



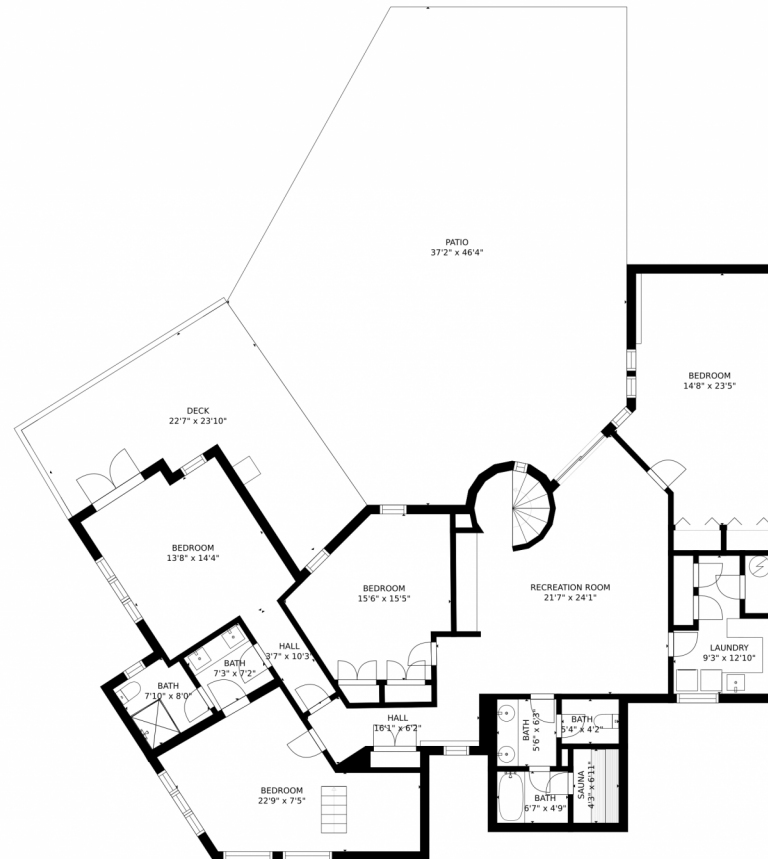
Disclaimer: Sizes and Dimensions are Approximate, Actual May Vary.



**Pandora & John Erlandson**  
303-888-6298  
pandora@pandorajohnproperties.com  
<https://www.pandorajohnproperties.com>



# 261 Columbine Lane, Evergreen, CO 80439 – Lower Level



GROSS INTERNAL AREA  
FLOOR 1: 1875 sq. ft. FLOOR 2: 1568 sq. ft.  
FLOOR 3: 812 sq. ft. FLOOR 4: 38 sq. ft.  
EXCLUDED AREAS: , DECK: 1031 sq. ft  
PATIO: 1327 sq. ft. GARAGE: 594 sq. ft  
BALCONY: 469 sq. ft  
TOTAL: 4294 sq. ft  
SIZES AND DIMENSIONS ARE APPROXIMATE, ACTUAL MAY VARY.



Disclaimer: Sizes and Dimensions are Approximate, Actual May Vary.



**Pandora & John Erlandson**

303-888-6298

[pandora@pandorajohnproperties.com](mailto:pandora@pandorajohnproperties.com)

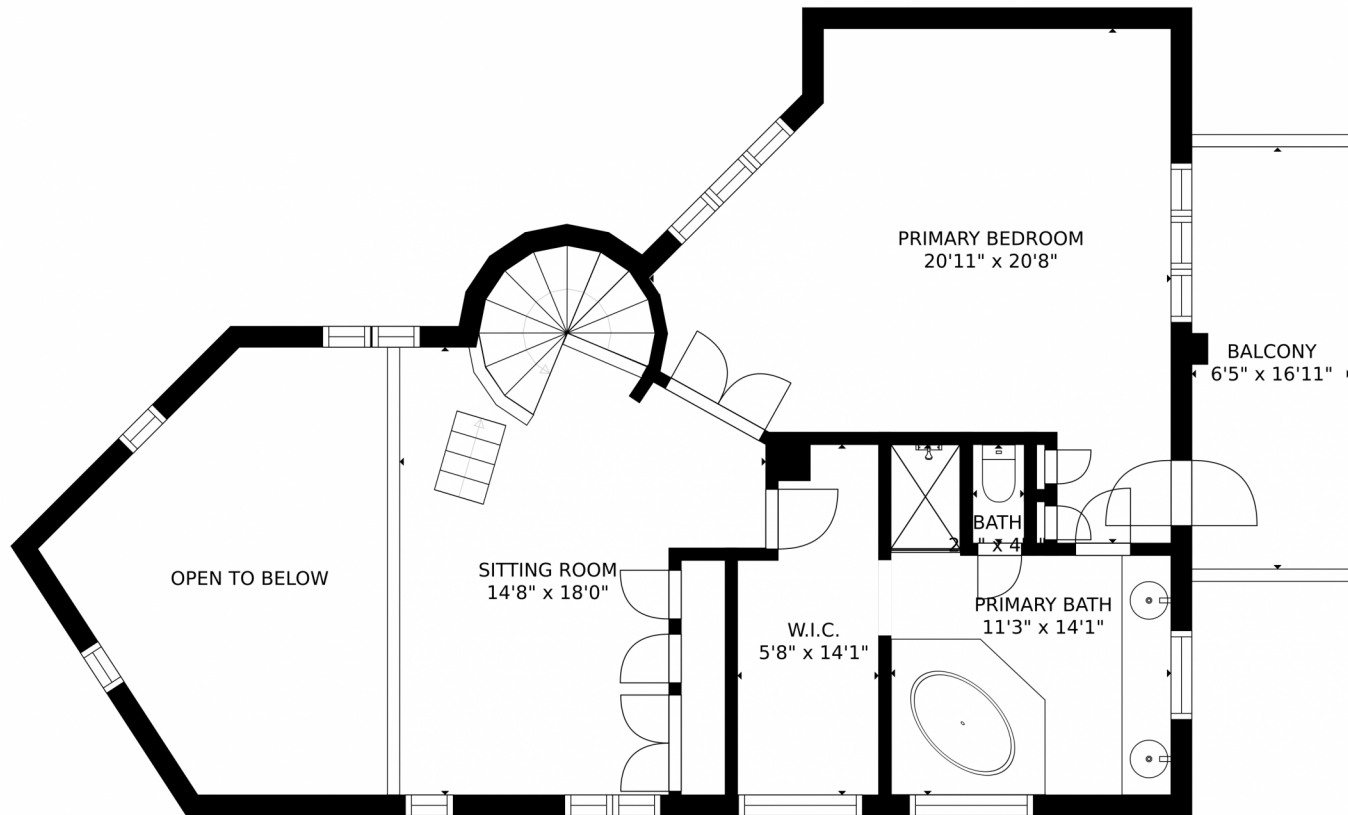
<https://www.pandorajohnproperties.com>



Scan code  
for more  
property  
details



# 261 Columbine Lane, Evergreen, CO 80439 – 2nd Level



GROSS INTERNAL AREA  
FLOOR 1: 1875 sq. ft. FLOOR 2: 1568 sq. ft.  
FLOOR 3: 812 sq. ft. FLOOR 4: 38 sq. ft.  
EXCLUDED AREAS: , DECK: 1031 sq. ft  
PATIO: 1327 sq. ft. GARAGE: 594 sq. ft  
BALCONY: 469 sq. ft  
TOTAL: 4294 sq. ft  
SIZES AND DIMENSIONS ARE APPROXIMATE, ACTUAL MAY VARY.



Disclaimer: Sizes and Dimensions are Approximate, Actual May Vary.



**Pandora & John Erlandson**

303-888-6298

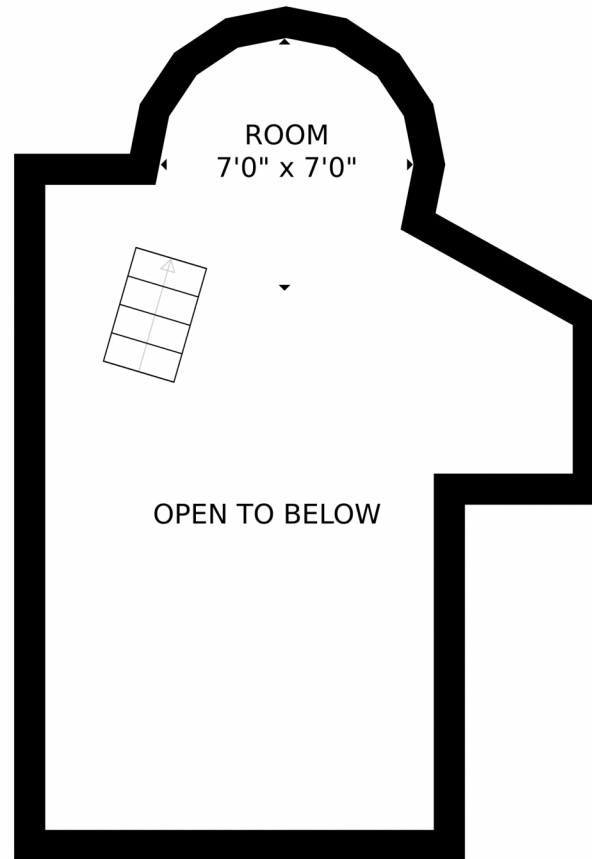
[pandora@pandorajohnproperties.com](mailto:pandora@pandorajohnproperties.com)

<https://www.pandorajohnproperties.com>



Scan code  
for more  
property  
details





GROSS INTERNAL AREA  
FLOOR 1: 1875 sq. ft, FLOOR 2: 1568 sq. ft  
FLOOR 3: 812 sq. ft, FLOOR 4: 38 sq. ft  
EXCLUDED AREAS: , DECK: 1031 sq. ft  
PATIO: 1327 sq. ft, GARAGE: 594 sq. ft  
BALCONY: 469 sq. ft  
TOTAL: 4294 sq. ft  
SIZES AND DIMENSIONS ARE APPROXIMATE, ACTUAL MAY VARY.



Disclaimer: Sizes and Dimensions are Approximate, Actual May Vary.



**Pandora & John Erlandson**

303-888-6298

[pandora@pandorajohnproperties.com](mailto:pandora@pandorajohnproperties.com)

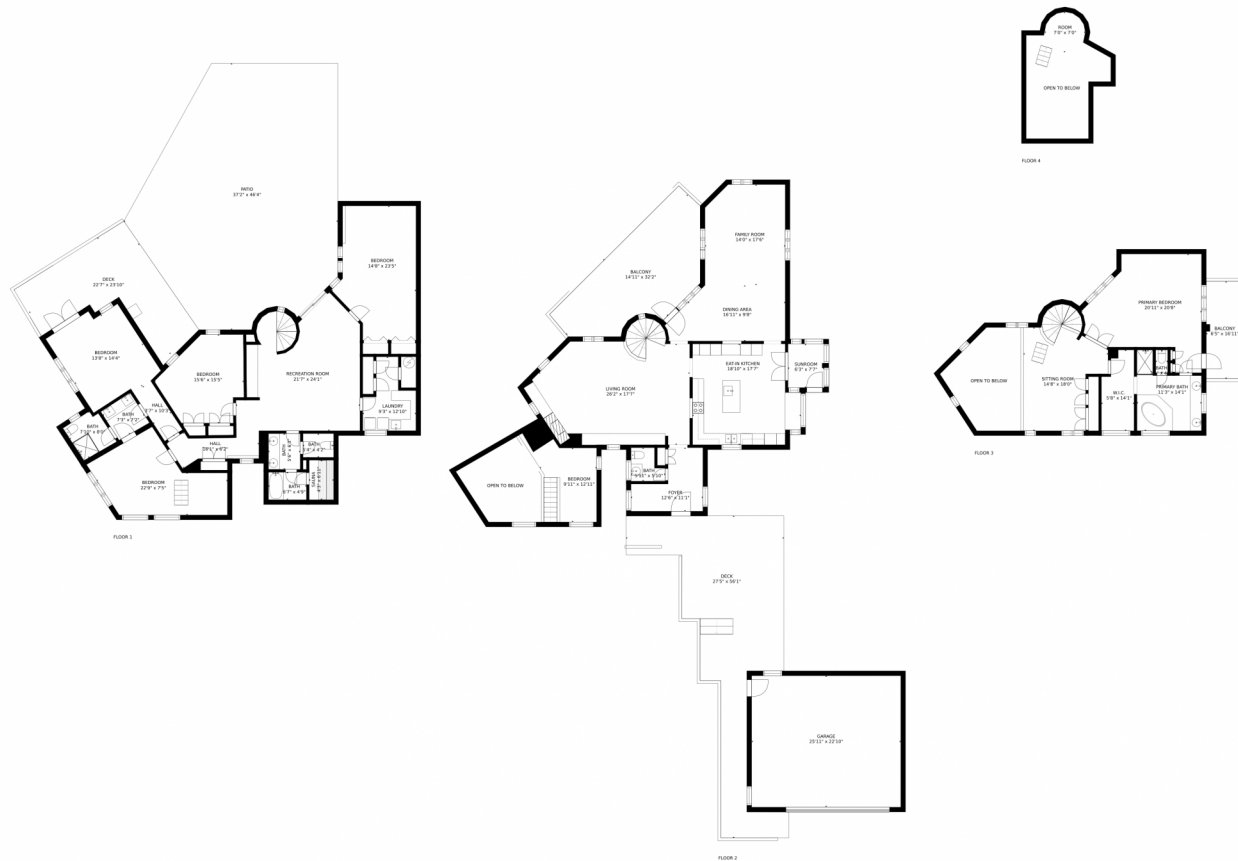
<https://www.pandorajohnproperties.com>



Scan code  
for more  
property  
details



# 261 Columbine Lane, Evergreen, CO 80439 – All Levels



GROSS INTERNAL AREA  
FLOOR 1: 1875 sq. ft, FLOOR 2: 1568 sq. ft  
FLOOR 3: 812 sq. ft, FLOOR 4: 38 sq. ft  
EXCLUDED AREAS: , DECK: 1031 sq. ft  
PATIO: 1327 sq. ft, GARAGE: 594 sq. ft  
BALCONY: 469 sq. ft  
TOTAL: 4294 sq. ft  
SIZES AND DIMENSIONS ARE APPROXIMATE, ACTUAL MAY VARY.



Disclaimer: Sizes and Dimensions are Approximate, Actual May Vary.



**Pandora & John Erlandson**  
303-888-6298  
pandora@pandorajohnproperties.com  
<https://www.pandorajohnproperties.com>



Scan code  
for more  
property  
details

