




 Townhouse

 1316 SQFT

 3 Beds

 1/1 Baths

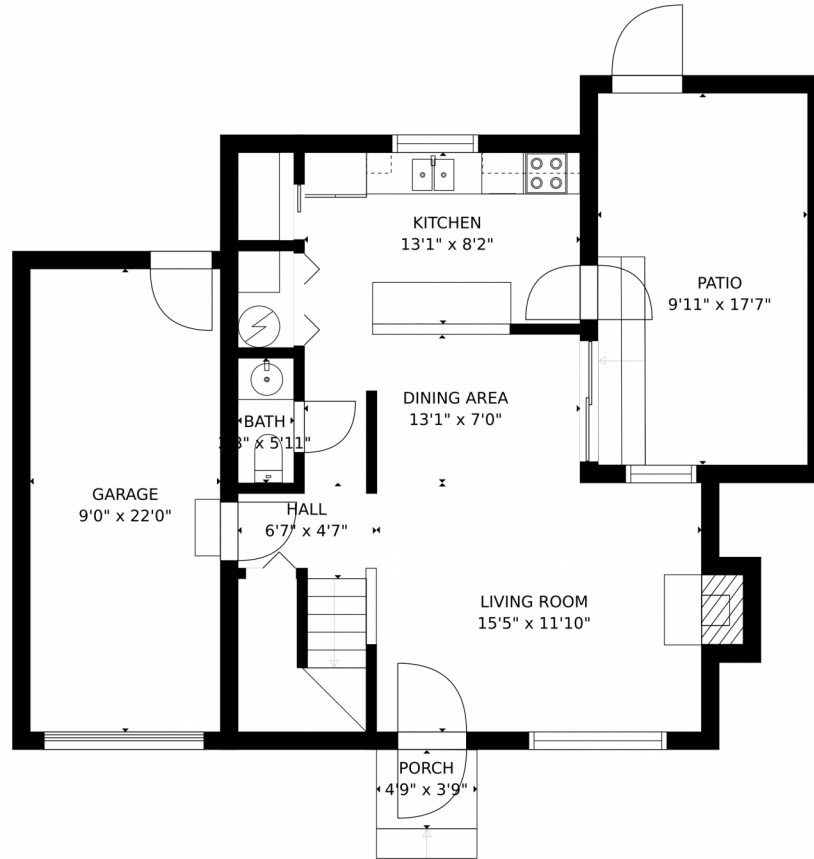
 1 Car



**Julio Quezada**  
720-882-3970  
julio@thepristineproperties.com



16320 East Radcliff Place #A, Aurora, CO 80015 – Main Level



GROSS INTERNAL AREA  
FLOOR 1: 522 sq. ft. FLOOR 2: 652 sq. ft.  
EXCLUDED AREAS: , GARAGE: 199 sq. ft.  
PATIO: 176 sq. ft. PORCH: 18 sq. ft.  
TOTAL: 1174 sq. ft.  
SIZES AND DIMENSIONS ARE APPROXIMATE, ACTUAL MAY VARY.



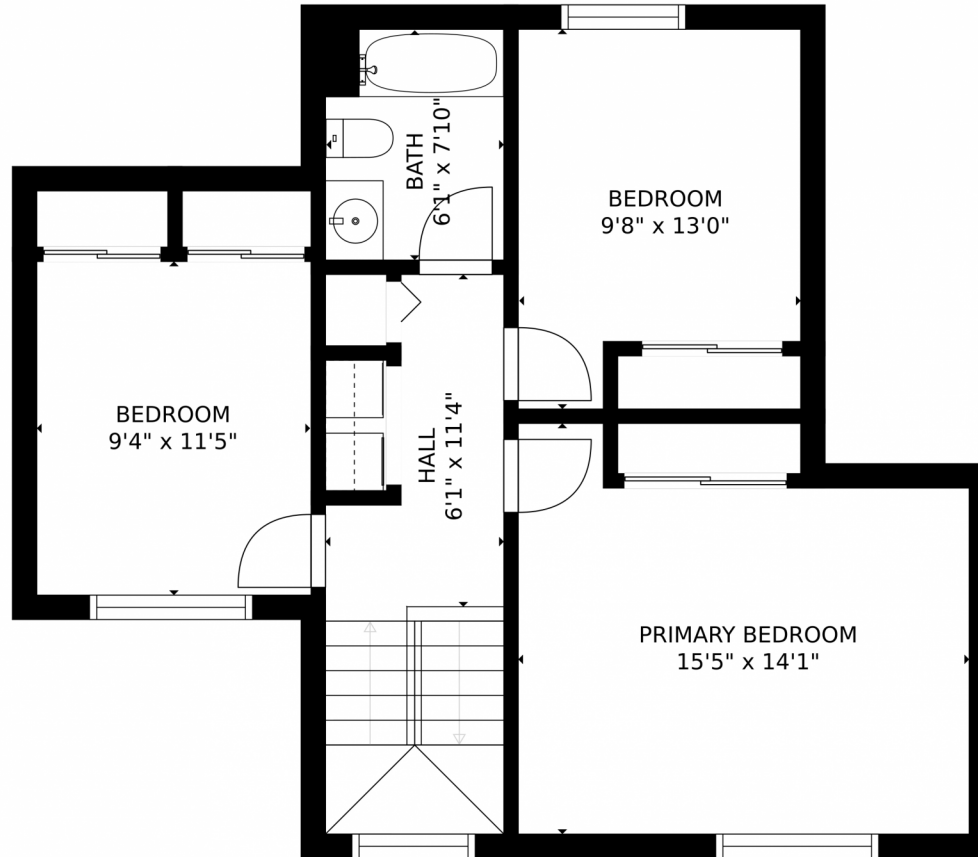
Disclaimer: Sizes and Dimensions are Approximate, Actual May Vary.



**Julio Quezada**  
720-882-3970  
julio@thepristineproperties.com



16320 East Radcliff Place #A, Aurora, CO 80015 – Second Level



GROSS INTERNAL AREA  
FLOOR 1: 522 sq. ft., FLOOR 2: 652 sq. ft.  
EXCLUDED AREAS: , GARAGE: 199 sq. ft.  
PATIO: 176 sq. ft., PORCH: 18 sq. ft.  
TOTAL: 1174 sq. ft.  
SIZES AND DIMENSIONS ARE APPROXIMATE, ACTUAL MAY VARY.



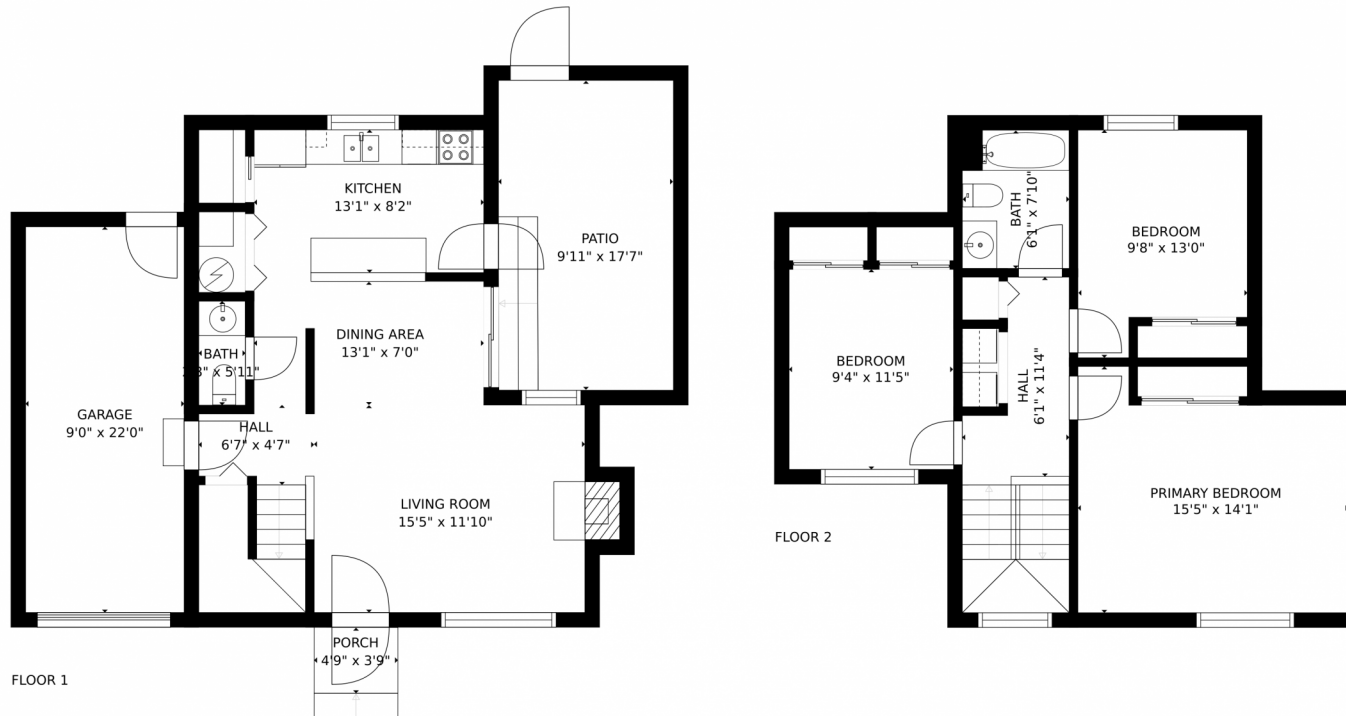
Disclaimer: Sizes and Dimensions are Approximate, Actual May Vary.



**Julio Quezada**  
720-882-3970  
julio@thepristineproperties.com



# 16320 East Radcliff Place #A, Aurora, CO 80015 – All Levels



GROSS INTERNAL AREA  
FLOOR 1: 522 sq. ft. FLOOR 2: 652 sq. ft  
EXCLUDED AREAS: , GARAGE: 199 sq. ft  
PATIO: 176 sq. ft, PORCH: 18 sq. ft  
TOTAL: 1174 sq. ft  
SIZES AND DIMENSIONS ARE APPROXIMATE, ACTUAL MAY VARY.



Disclaimer: Sizes and Dimensions are Approximate, Actual May Vary.



**Julio Quezada**  
720-882-3970  
julio@thepristineproperties.com

