



3740 S Jebel Way
Aurora, CO 80013
COMMUNITY: Mesa

MLS # 8071418
PRICE \$585,000



Single Family



2152 SQFT



5 Beds



3/1 Baths



2 Car



0.11 Acre

PROPERTY DETAILS

Welcome home to the Mesa community of Southeast Aurora! This immaculately maintained home truly has it all making it move in ready to the max. Many honey-do's have already been done at a whopping \$80,000 in upgrades to include the remastered kitchen, class 4 Owens Corning impact-resistant roof, brand new interior and exterior paint, professionally landscaped yards including the artificial turf out back, wood flooring in the main level, carpet in 2021, a fully finished basement and finished garage with professional gym mirrors. For the techie in your family this home is equipped with a full security system including exterior cameras along with a Nest smart system making it a full-fledged smart home. The main level offers an open concept main living area separate from the two-story formal living room. Upstairs you will find a lovely owner's suite featuring a five-piece bathroom and large walk-in closet. Three generously sized additional bedrooms and full bathroom complete the upper level. The basement is fully finished, currently serving as a rental space but would also make for a phenomenal guest suite or even a home office. The outdoor living space is a dream with plenty of space for lounge and play just off of your dining area making this layout an entertainer's wonderland. Mesa offers two nearby parks within walking distance that include baseball fields, basketball courts, and tons of open space and trails. Just minutes to a multitude of



Tatyana Sturm

720-350-5909

tatyana@exitrealtydtc.com

<https://thestorckteam.com>

Scan code
for more
property
details



lifestyle conveniences including many grocery stores, shopping and local eateries. Residents Mesa enjoy the award winning education system of Cherry Creek Schools including Cherokee Trail HS. Arrive anywhere in the Metro area with e470 less than five minutes away along with Highway 225 less than ten minutes from your home. Your new home is only 10 minutes to Buckley SFB along with Southlands Mall offering endless shopping, dining, and movie options. DIA is also just 20 minutes from your home making travel a breeze.



Tatyana Sturm

720-350-5909

tatyana@exitrealtydtc.com

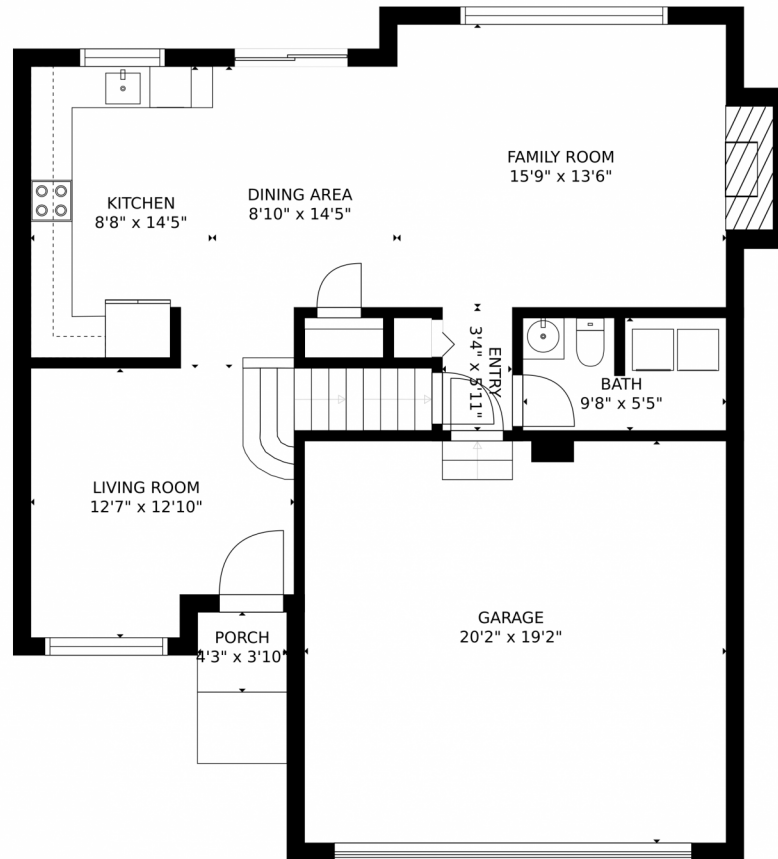
<https://thestorckteam.com>



Scan code
for more
property
details



3740 S Jebel Way, Aurora, CO 80013 – Main Level



Estimated areas

GLA FLOOR 1: 0 sq. ft, excluded 486 sq. ft.
GLA FLOOR 2: 813 sq. ft, excluded 469 sq. ft.
GLA FLOOR 3: 993 sq. ft, excluded 162 sq. ft.
Total GLA 1806 sq. ft, total scanned area 2923 sq. ft.

SIZES AND DIMENSIONS ARE APPROXIMATE, ACTUAL MAY VARY.



Disclaimer: Sizes and Dimensions are Approximate, Actual May Vary.



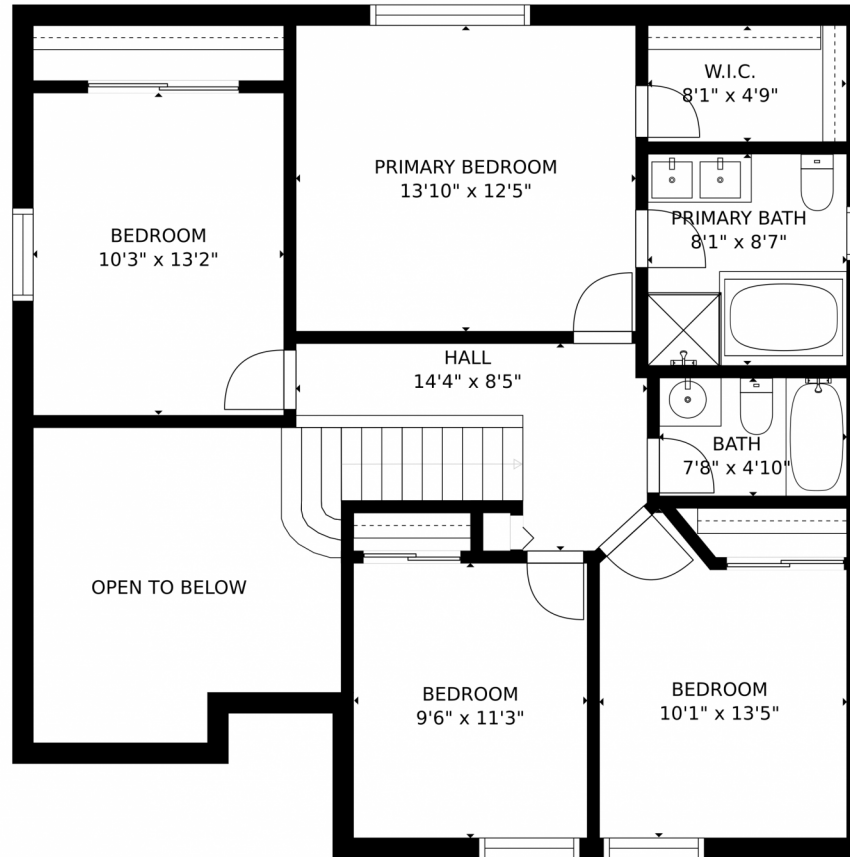
Tatyana Sturm
720-350-5909
tatyana@exitrealtydtc.com
<https://thestorckteam.com>



Scan code
for more
property
details



3740 S Jebel Way, Aurora, CO 80013 – Upper Level



Estimated areas

GLA FLOOR 1: 0 sq. ft, excluded 486 sq. ft.
GLA FLOOR 2: 813 sq. ft, excluded 469 sq. ft.
GLA FLOOR 3: 993 sq. ft, excluded 162 sq. ft.
Total GLA 1806 sq. ft, total scanned area 2923 sq. ft.

SIZES AND DIMENSIONS ARE APPROXIMATE, ACTUAL MAY VARY.



Disclaimer: Sizes and Dimensions are Approximate, Actual May Vary.

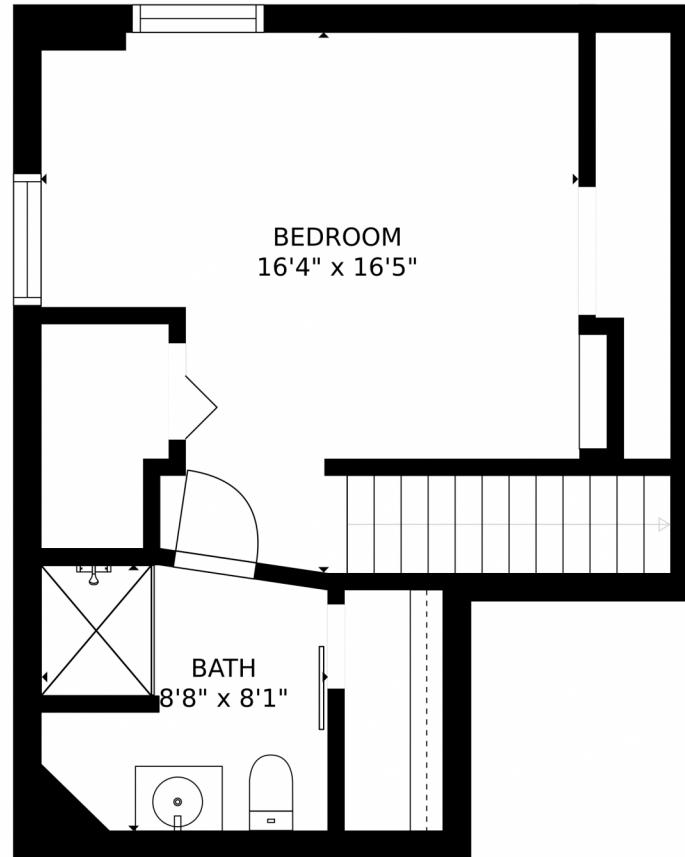


Tatyana Sturm
720-350-5909
tatyana@exitrealtydtc.com
<https://thestorckteam.com>



Scan code
for more
property
details





Estimated areas

GLA FLOOR 1: 0 sq. ft, excluded 486 sq. ft.
GLA FLOOR 2: 81.3 sq. ft, excluded 469 sq. ft.
GLA FLOOR 3: 99.3 sq. ft, excluded 162 sq. ft.
Total GLA 180.6 sq. ft, total scanned area 2923 sq. ft.

SIZES AND DIMENSIONS ARE APPROXIMATE, ACTUAL MAY VARY.



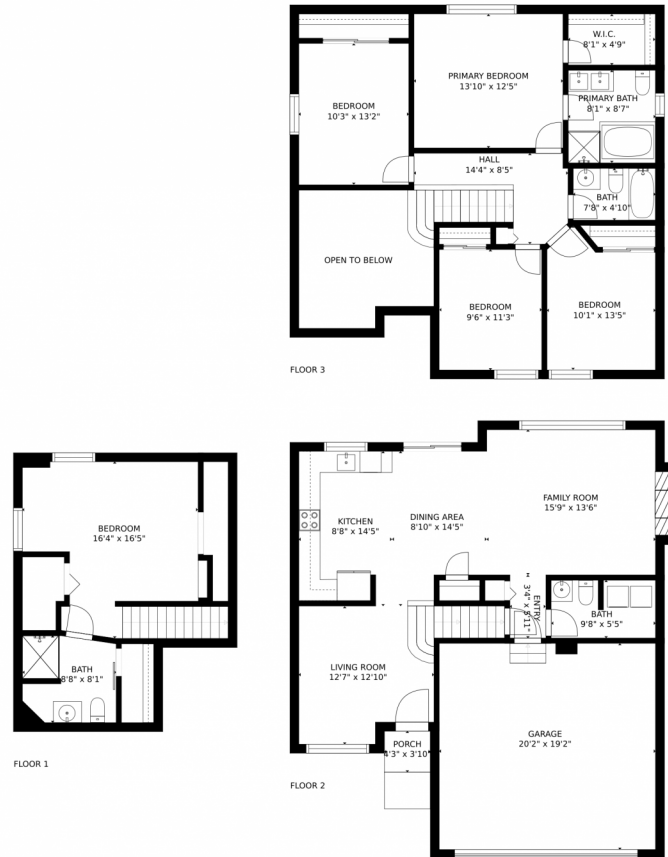
Disclaimer: Sizes and Dimensions are Approximate, Actual May Vary.



Tatyana Sturm
720-350-5909
tatyana@exitrealtydtc.com
<https://thestorckteam.com>



3740 S Jebel Way, Aurora, CO 80013 – All Levels



Estimated areas

GLA FLOOR 1: 0 sq. ft, excluded 486 sq. ft.
GLA FLOOR 2: 813 sq. ft, excluded 469 sq. ft.
GLA FLOOR 3: 993 sq. ft, excluded 162 sq. ft.
Total GLA 1806 sq. ft, total scanned area 2923 sq. ft.

SIZES AND DIMENSIONS ARE APPROXIMATE, ACTUAL MAY VARY.



Disclaimer: Sizes and Dimensions are Approximate, Actual May Vary.



Tatyana Sturm
720-350-5909
tatyana@exitrealtydtc.com
<https://thestorckteam.com>

