

9873 Devoncove Dr
Peyton, CO 80831
COMMUNITY: Paintbrush Hills

MLS # 3136038
PRICE \$650,000



Single Family



3373 SQFT



4 Beds



2/1 Baths



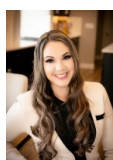
3 Car



0.26 Acre

PROPERTY DETAILS

Look no further! This Peyton stunner is sure to impress as it features four-bedroom, two-and-a-half-bath with all the modern conveniences anyone could ask for. The home boasts whole-home air conditioning, humidifying, and fans to keep you cool. A Google Nest thermostat learns your heating and cooling preferences to keep you toasty in the winter and cool during the Dog Days of summer. The Samsung Family Hub refrigerator controls the washer, dryer, thermostat, and Ring doorbell cameras. With a 3-car wifi-controlled garage and sprinkler system, you know your cars will be protected from the erratic elements of the Colorado summer, and your grass will be kept in tip-top shape. The sleek, clean kitchen hosts a variety of exciting features, including luxury vinyl flooring in the kitchen and dining areas, custom blinds with a lifetime warranty, and a composite sink. With granite countertops and enough storage to house all your snacks, this expertly crafted house is waiting to welcome you home. *Virtual staging used*



Samantha Maldonado

719-499-2157

MontlorSam@gmail.com

<https://montlorsam.findme.homes>



Scan code
for more
property
details





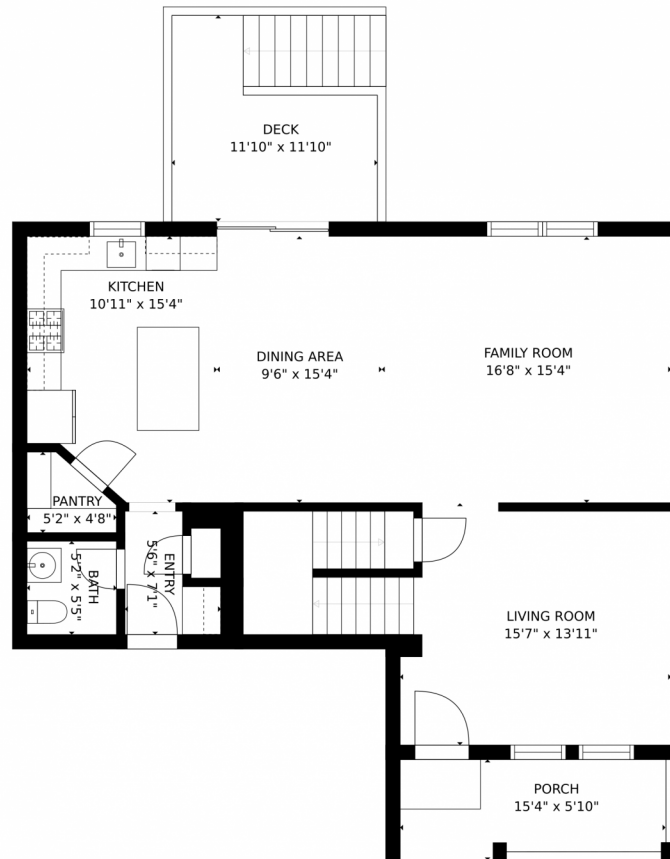
Samantha Maldonado
719-499-2157
MontlorSam@gmail.com
<https://montlorsam.findme.homes>



Scan code
for more
property
details



9873 Devoncove Dr, Peyton, CO 80831 — Main Level



GROSS INTERNAL AREA
FLOOR 1: 887 sq. ft, FLOOR 2: 953 sq. ft
FLOOR 3: 1280 sq. ft, EXCLUDED AREAS:
DECK: 139 sq. ft, PORCH: 84 sq. ft
TOTAL: 3120 sq. ft
SIZES AND DIMENSIONS ARE APPROXIMATE, ACTUAL MAY VARY.



Disclaimer: Sizes and Dimensions are Approximate, Actual May Vary.



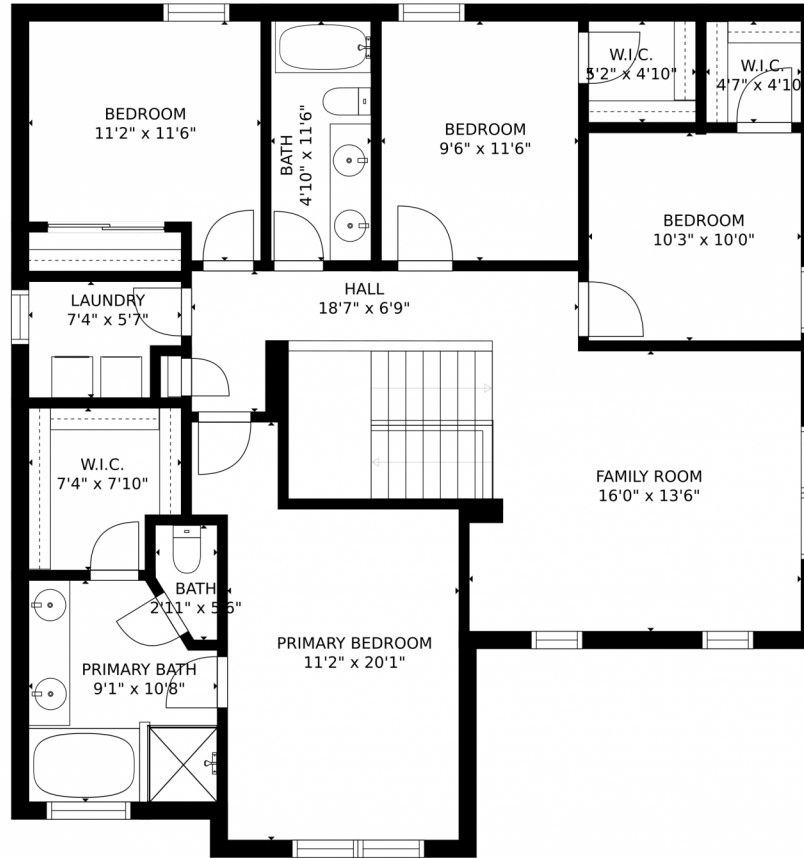
Samantha Maldonado
719-499-2157
MontlorSam@gmail.com
<https://montlorsam.findme.homes>



Scan code
for more
property
details



9873 Devoncove Dr, Peyton, CO 80831 – Upper Level



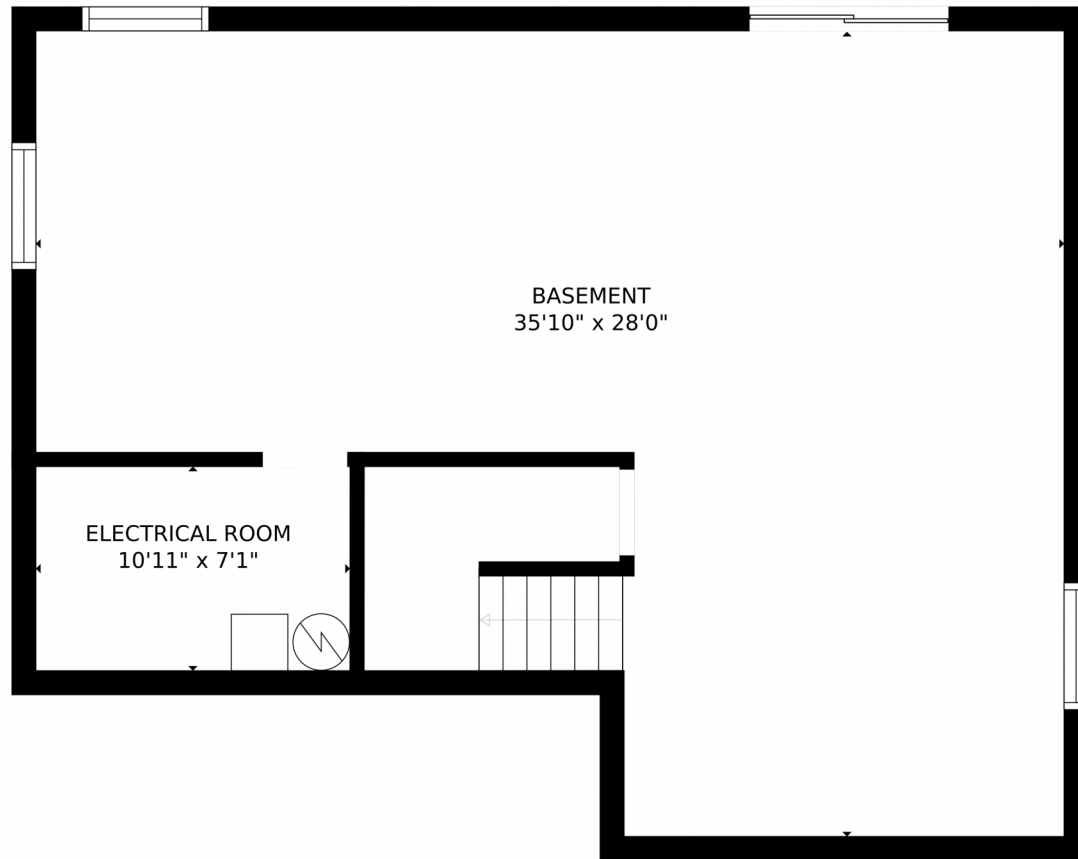
GROSS INTERNAL AREA
FLOOR 1: 887 sq. ft, FLOOR 2: 953 sq. ft
FLOOR 3: 1280 sq. ft, EXCLUDED AREAS:
DECK: 139 sq. ft, PORCH: 84 sq. ft
TOTAL: 3120 sq. ft
SIZES AND DIMENSIONS ARE APPROXIMATE, ACTUAL MAY VARY.

Disclaimer: Sizes and Dimensions are Approximate, Actual May Vary.



Samantha Maldonado
719-499-2157
MontlorSam@gmail.com
<https://montlorsam.findme.homes>





GROSS INTERNAL AREA
FLOOR 1: 887 sq. ft, FLOOR 2: 953 sq. ft
FLOOR 3: 1280 sq. ft, EXCLUDED AREAS:
DECK: 139 sq. ft, PORCH: 84 sq. ft
TOTAL: 3120 sq. ft
SIZES AND DIMENSIONS ARE APPROXIMATE, ACTUAL MAY VARY.



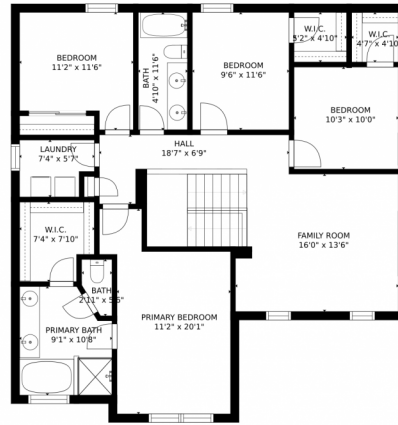
Disclaimer: Sizes and Dimensions are Approximate, Actual May Vary.



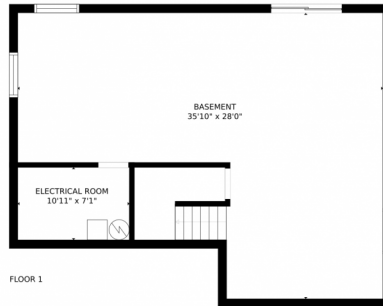
Samantha Maldonado
719-499-2157
MontlorSam@gmail.com
<https://montlorsam.findme.homes>



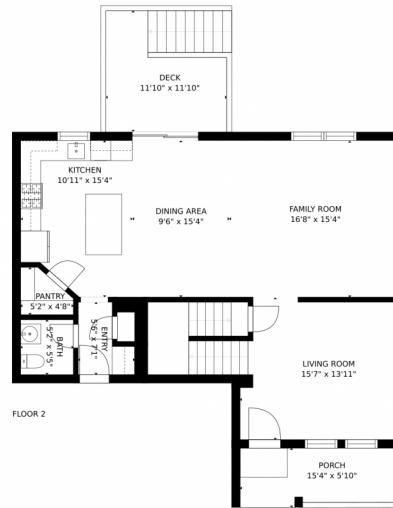
9873 Devoncove Dr, Peyton, CO 80831 – All Levels



FLOOR 3



FLOOR 1



FLOOR 2

GROSS INTERNAL AREA
FLOOR 1: 887 sq. ft, FLOOR 2: 953 sq. ft
FLOOR 3: 1280 sq. ft, EXCLUDED AREAS:
DECK: 139 sq. ft, PORCH: 84 sq. ft
TOTAL: 3120 sq. ft
SIZES AND DIMENSIONS ARE APPROXIMATE, ACTUAL MAY VARY.



Disclaimer: Sizes and Dimensions are Approximate, Actual May Vary.



Samantha Maldonado
719-499-2157
MontlorSam@gmail.com
<https://montlorsam.findme.homes>



Scan code
for more
property
details