



Single Family



4034 SQFT



5 Beds



3 Baths



3 Car



0.38 Acre

PROPERTY DETAILS

Welcome to this well updated corner lot ranch with over a 1/3 of an acre with plenty of natural light. In the Pine Creek neighborhood it has an oversized three car tandem garage and real hardwood floors throughout. Formal dining room, newer stainless steel appliances, 42 inch cabinets with plenty of storage, 5 burner gas stove and laundry room on the main level with direct access to the garage. Custom built-in shelves in the living room by the gas log fireplace, in the master bedroom AND the master walk-in closet. 5 Piece Master bathroom has heated tile flooring. Plantation shutters, eating space in the kitchen with barstool height countertop and pendant lighting. On the main level you'll find two additional bedrooms, one can be used as an office. Canister lighting throughout this amazing home. Fully finished basement with an additional two bedrooms with walk-in closets and movie theater room/game room, and extra storage space. Pool table and accessories included right next to the wet bar and mini fridge. Backyard has over \$27,000 invested all to create a wonderful oasis with minimal landscaping, gas fire pit, custom stones and Pergola. This lovely home won't be here for long, you'll want to experience it in person. Schedule your showings now!



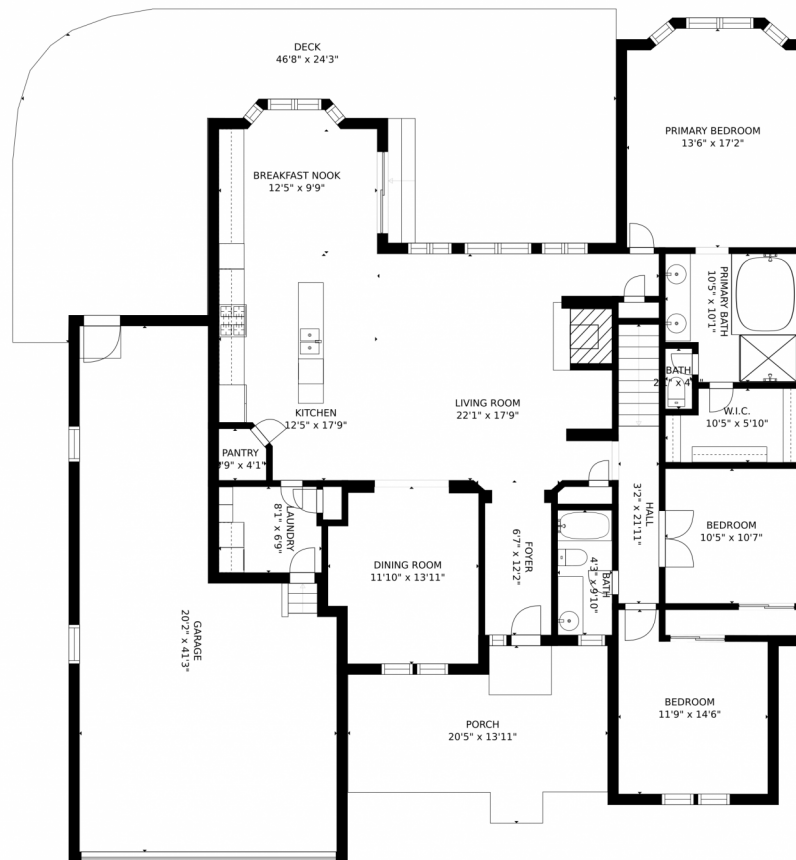
Anthony Limpede
303-564-8600
myagenttonyl@gmail.com



Scan code
for more
property
details



10211 Murmuring Pine Court, Colorado Springs, CO 80920 — Main Level



GROSS INTERNAL AREA
FLOOR 1: 1820 sq. ft, FLOOR 2: 1845 sq. ft
EXCLUDED AREAS: , GARAGE: 625 sq. ft
DECK: 792 sq. ft, PORCH: 219 sq. ft
TOTAL: 3664 sq. ft
SIZES AND DIMENSIONS ARE APPROXIMATE, ACTUAL MAY VARY.



Disclaimer: Sizes and Dimensions are Approximate, Actual May Vary.



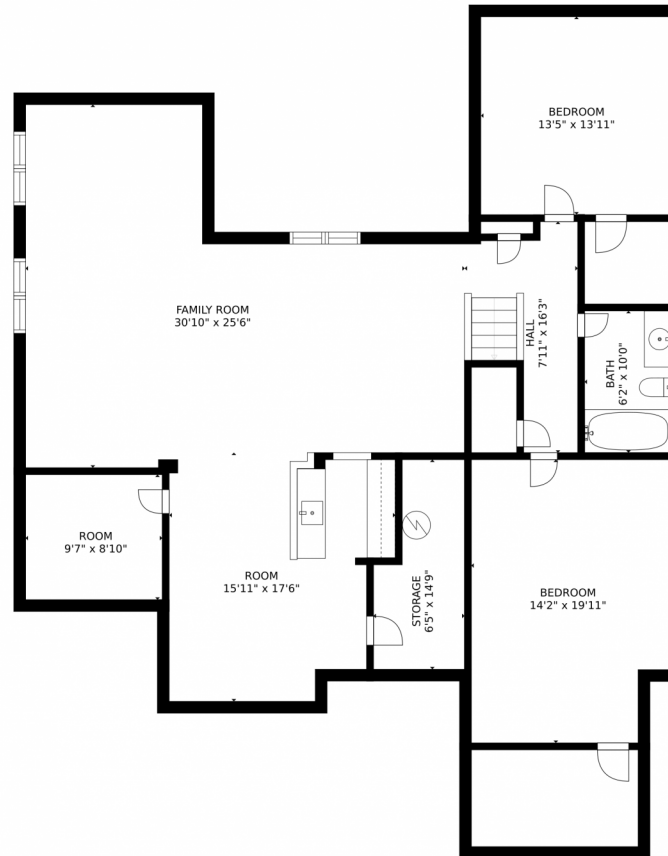
Anthony Limpede
303-564-8600
myagenttonyl@gmail.com



Scan code
for more
property
details



10211 Murmuring Pine Court, Colorado Springs, CO 80920 — Lower Level



GROSS INTERNAL AREA
FLOOR 1: 1820 sq. ft, FLOOR 2: 1845 sq. ft
EXCLUDED AREAS: , GARAGE: 625 sq. ft
DECK: 792 sq. ft, PORCH: 219 sq. ft
TOTAL: 3664 sq. ft
SIZES AND DIMENSIONS ARE APPROXIMATE, ACTUAL MAY VARY.



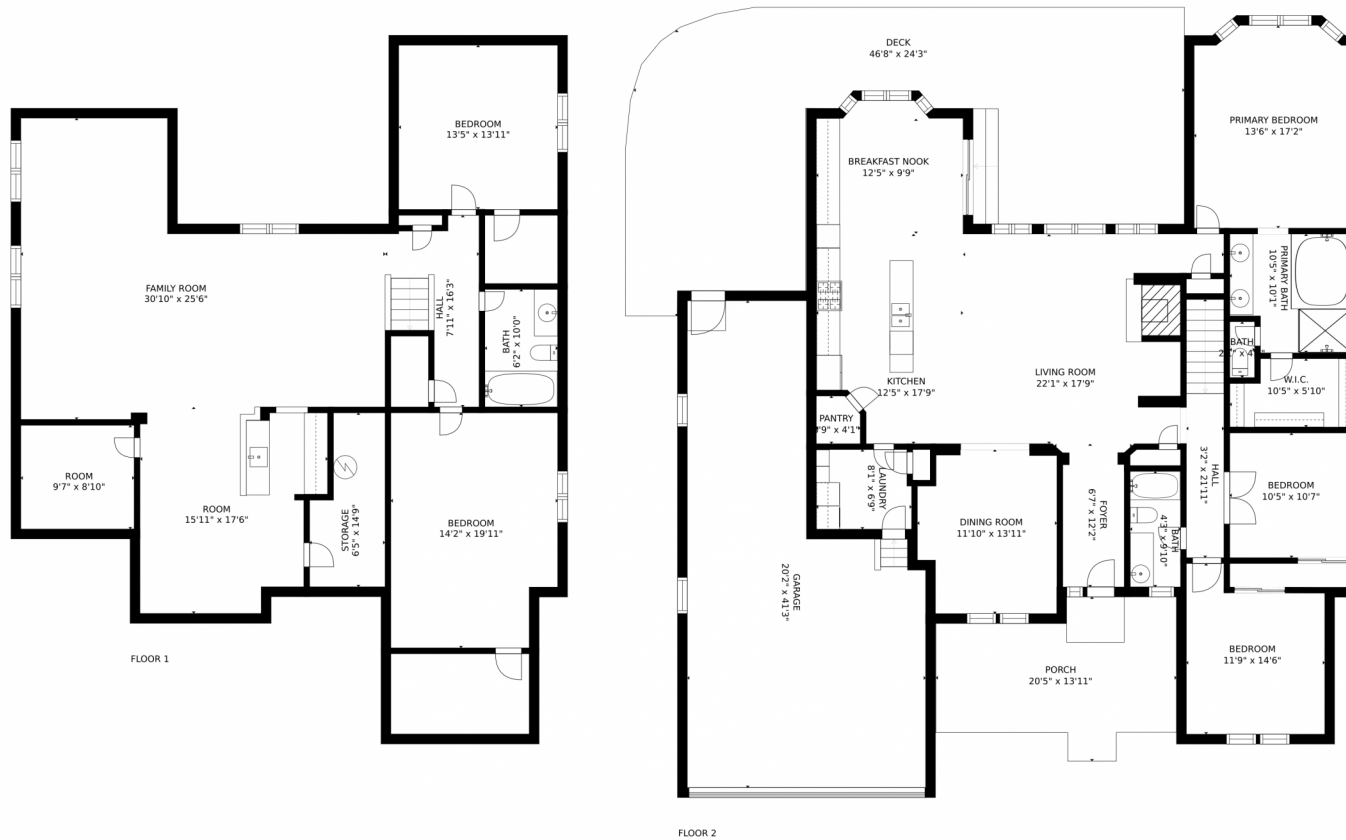
Disclaimer: Sizes and Dimensions are Approximate, Actual May Vary.



Anthony Limpede
303-564-8600
myagenttonyl@gmail.com



10211 Murmuring Pine Court, Colorado Springs, CO 80920 — All Levels



GROSS INTERNAL AREA
FLOOR 1: 1820 sq. ft, FLOOR 2: 1845 sq. ft
EXCLUDED AREAS: , GARAGE: 625 sq. ft
DECK: 792 sq. ft, PORCH: 219 sq. ft
TOTAL: 3664 sq. ft
SIZES AND DIMENSIONS ARE APPROXIMATE, ACTUAL MAY VARY.



Disclaimer: Sizes and Dimensions are Approximate, Actual May Vary.



Anthony Limpede
303-564-8600
myagenttonyl@gmail.com



Scan code
for more
property
details

