



13353 Wildflower Street  
Broomfield, CO 80020



Single Family



2021 SQFT



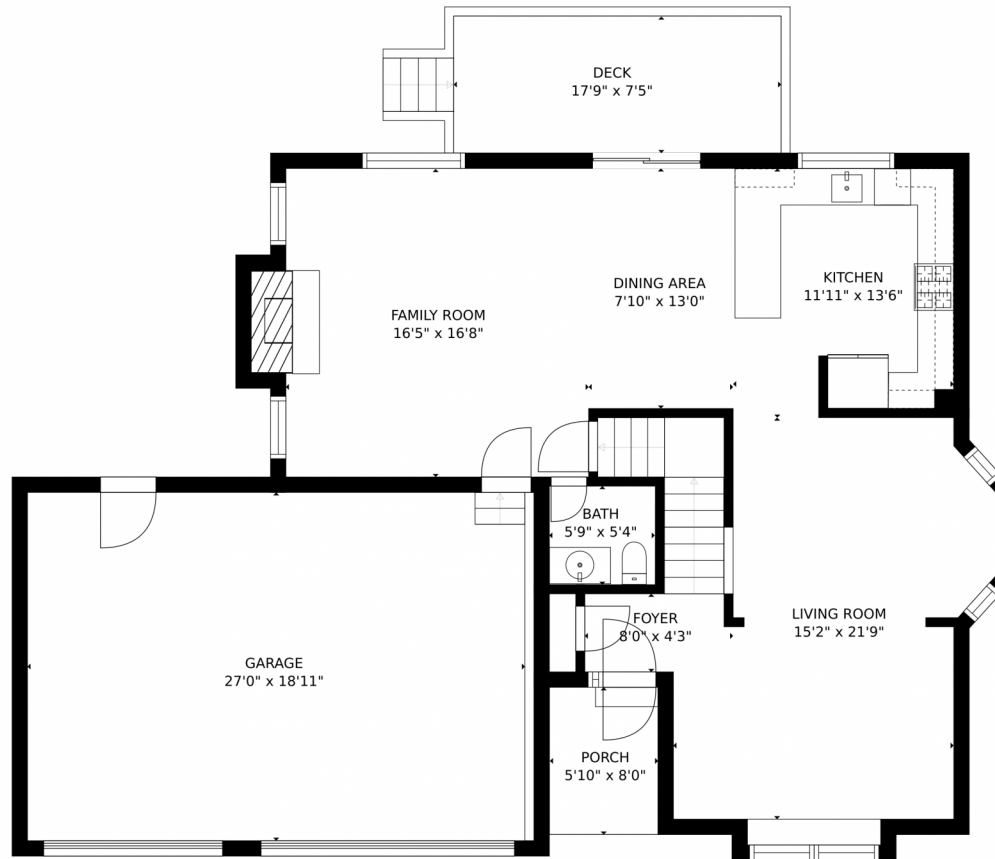
**Megan Peters**  
517-285-2228  
meganapeters@yahoo.com



Scan code  
for more  
property  
details



# 13353 Wildflower Street, Broomfield, CO 80020 – Main Level



GROSS INTERNAL AREA  
FLOOR 1: 959 sq. ft. FLOOR 2: 996 sq. ft.  
FLOOR 3: 1081 sq. ft. EXCLUDED AREAS:  
GARAGE: 519 sq. ft. DECK: 132 sq. ft.  
PORCH: 47 sq. ft.  
TOTAL: 3036 sq. ft.  
SIZES AND DIMENSIONS ARE APPROXIMATE, ACTUAL MAY VARY.



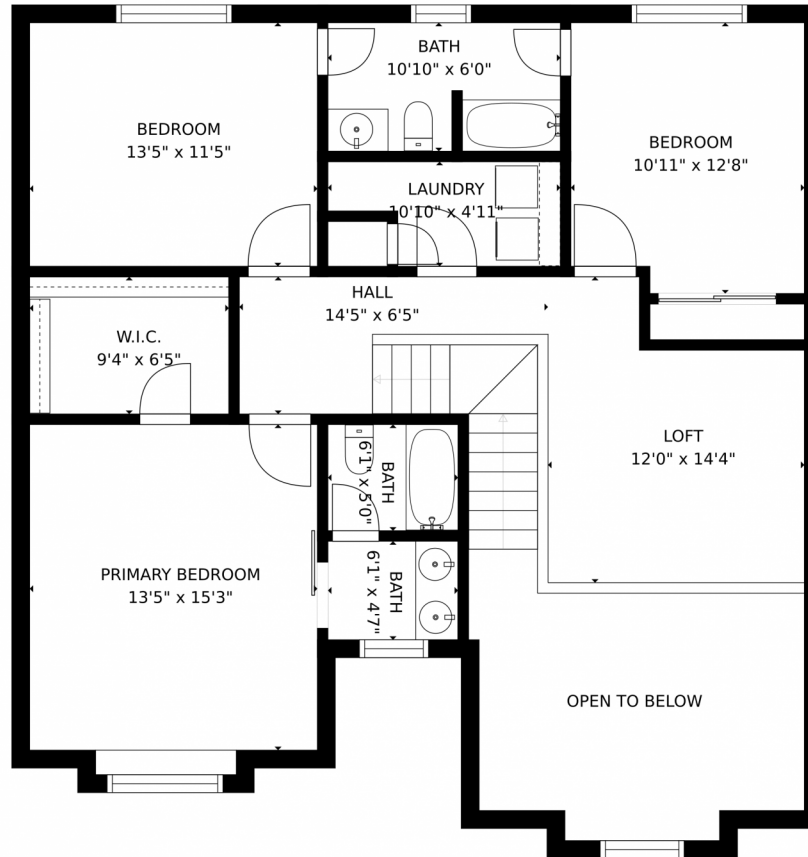
Disclaimer: Sizes and Dimensions are Approximate, Actual May Vary.



**Megan Peters**  
517-285-2228  
meganapeters@yahoo.com



13353 Wildflower Street, Broomfield, CO 80020 – Second Level



GROSS INTERNAL AREA  
FLOOR 1: 959 sq. ft. FLOOR 2: 996 sq. ft.  
FLOOR 3: 1081 sq. ft. EXCLUDED AREAS:  
GARAGE: 519 sq. ft. DECK: 132 sq. ft.  
PORCH: 47 sq. ft.  
TOTAL: 3036 sq. ft.  
SIZES AND DIMENSIONS ARE APPROXIMATE, ACTUAL MAY VARY.



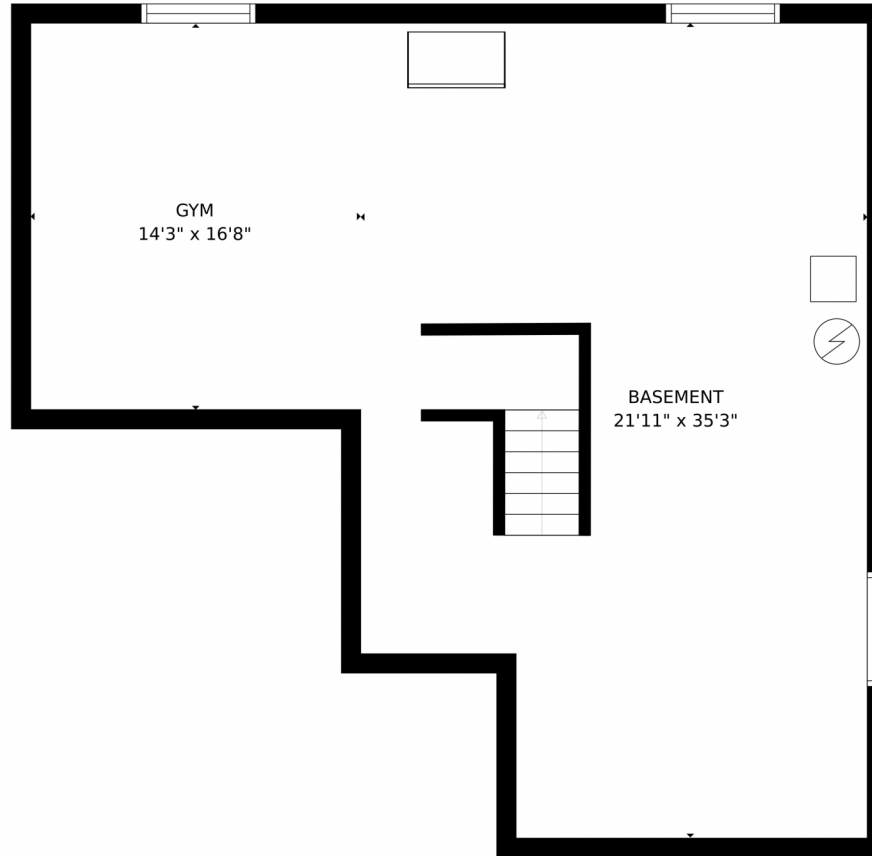
Disclaimer: Sizes and Dimensions are Approximate, Actual May Vary.



**Megan Peters**  
517-285-2228  
meganapeters@yahoo.com



13353 Wildflower Street, Broomfield, CO 80020 – Basement



GROSS INTERNAL AREA  
FLOOR 1: 959 sq. ft, FLOOR 2: 996 sq. ft  
FLOOR 3: 1081 sq. ft, EXCLUDED AREAS:  
GARAGE: 519 sq. ft, DECK: 132 sq. ft  
PORCH: 47 sq. ft  
TOTAL: 3036 sq. ft  
SIZES AND DIMENSIONS ARE APPROXIMATE, ACTUAL MAY VARY.



Disclaimer: Sizes and Dimensions are Approximate, Actual May Vary.



**Megan Peters**  
517-285-2228  
meganapeters@yahoo.com





# 13353 Wildflower Street, Broomfield, CO 80020 – All Levels



GROSS INTERNAL AREA  
FLOOR 1: 959 sq. ft, FLOOR 2: 996 sq. ft  
FLOOR 3: 1081 sq. ft, EXCLUDED AREAS:  
GARAGE: 519 sq. ft, DECK: 132 sq. ft  
PORCH: 47 sq. ft  
TOTAL: 3036 sq. ft  
SIZES AND DIMENSIONS ARE APPROXIMATE, ACTUAL MAY VARY.



Disclaimer: Sizes and Dimensions are Approximate, Actual May Vary.



**Megan Peters**  
517-285-2228  
meganpeters@yahoo.com

