



Condominium



1020 SQFT



1 Bed



1/1 Baths

PROPERTY DETAILS

COMING SOON SHOWINGS START FRIDAY, JUNE 10 PHOTOS POSTED SOON

Beautiful updates in this amazing Loft you will not be disappointed! With one of the lowest HOA's in the area! This rarely available West End loft is all about the location and is truly unbeatable! In the heart of downtown yet on a quiet part of Wazee, this stunning loft is completely remodeled and move in ready! West End Lofts Boutique Building. Contemporary Architecture & Finish Spacious Loft 1 Bedroom with 1 1/2 Baths. One Reserved Covered Parking Spot Available in Secure Building Plus 1 Storage Space Stunning Hardwood Floors Walk In Closet Large Foyer & Large Bedroom. Incredible Kitchen with Island opens to Living Space Stainless Viking Appliances, Granite Counters. Air Conditioning, Private Balcony with gas line for BBQ, Powder Bath, Washer/Dryer in Unit 1,020 Square Feet.

Private Secured Lobby With Plenty of Natural Light, Open Floor Plan One block to the 16th Street Mall, One Block to Cherry Creek Bike Path No Bars or Restaurants in the Building - Very Quiet Building. Views Great Opportunity to live in one of LoDo's best buildings & locations Primo LoDo Location.



Tonie Benetti

303-210-7336

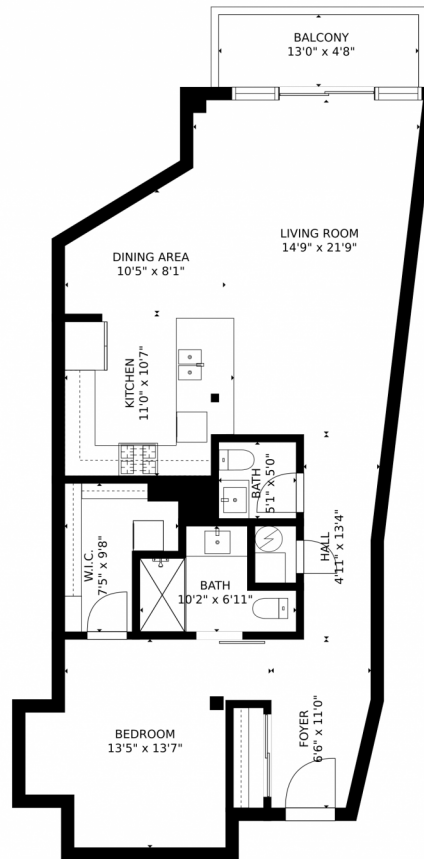
tonie@tbkrealstate.com

<https://www.tbkrealstate.com>

Scan code
for more
property
details



1435 Wazee Street, Denver, CO 80202 – Floor Plan



GROSS INTERNAL AREA
FLOOR 1: 945 sq. ft. EXCLUDED AREAS:
BALCONY: 62 sq. ft.
TOTAL: 945 sq. ft.
SIZES AND DIMENSIONS ARE APPROXIMATE, ACTUAL MAY VARY.



Disclaimer: Sizes and Dimensions are Approximate, Actual May Vary.



Tonie Benetti
303-210-7336
tonie@tbkrealstate.com
<https://www.tbkrealstate.com>

